

# CERTIFICATE OF LOCATION OF GOVERNMENT CORNER

County of Anoka

State of Minnesota

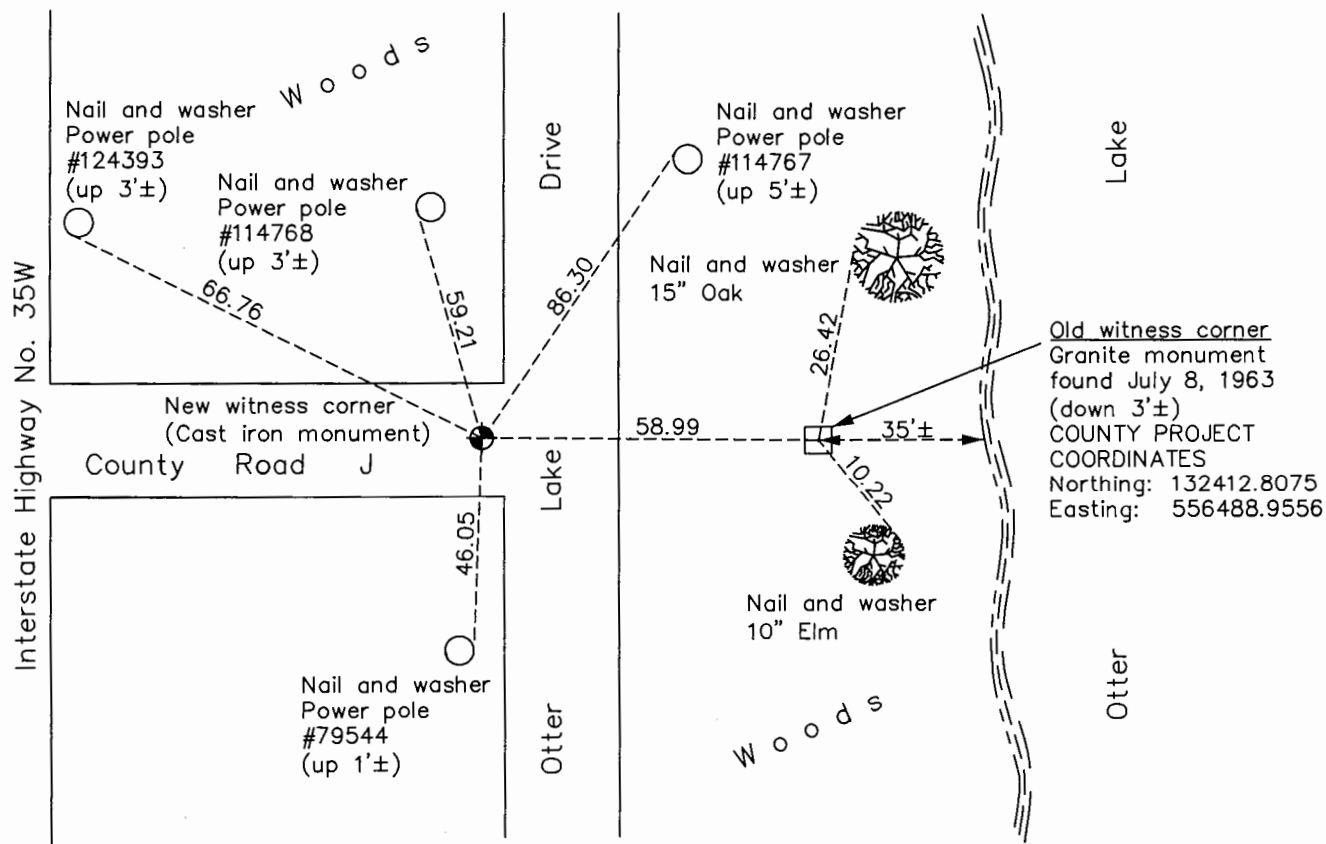
Witness Corner of Sec. 35 Township 31 Range 22  
 (on south line of SE 1/4)

On the 6th day of July, 1998, the described corner was evidenced by area resurvey

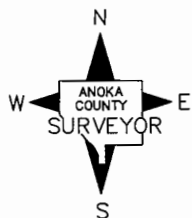
and to perpetuate the location of said corner, at the exact location thereof, a permanent marker was placed consisting of a cast iron monument

AND on the 22nd day of December, 2016, said permanent marker was found down 0.5'± and the ties were updated

Updated reference ties are as shown below.



Old witness corner  
 Granite monument  
 found July 8, 1963  
 (down 3'±)  
 COUNTY PROJECT  
 COORDINATES  
 Northing: 132412.8075  
 Easting: 556488.9556



Revision Date  
5/30/17

N.A.D. 1983 Coordinates  
 (1996 Adjustment)

County Project Coordinates	
Northing	<u>132413.6193</u>
Easting	<u>556429.9725</u>
Date	<u>7/06/98</u>

I hereby certify that this United States public land survey monument record is correct and complete to the best of my knowledge and belief.

*Larry D. Hoium* Date 9/06/17

Larry D. Hoium, Anoka County Surveyor  
 Minnesota License Number 18165

# HISTORY OF GOVERNMENT CORNER

Page No. 142

County of Anoka

State of Minnesota

Witness Corner of Sec. 35 Township 31 Range 22  
(on south line of SE 1/4)

## **CORNER HISTORY:**

July 8, 1963 - Found 8" Square Granite Monument with drill hole in center down 1'± (north line NE1/4 Sec 4, T30, R22, Ramsey Co. M.C. #19) . Established ties to monument.

June 30, 1965 - Found Granite Monument in bottom of 2'± deep hole and updated ties.

March 21, 1966 - Found Granite Monument and updated ties prior to road construction.

August, 1968 - Found Granite Monument and updated ties.

July 3, 1973 - Found Granite Monument and updated ties.

June 8, 1977 - Found Granite Monument and updated ties.

July 6, 1998- Set Cast Iron Monument in new location and established NAD 1983 (1996 Adjustment) Anoka County Project Coordinates by Static GPS methods. Updated ties. Also established coordinates for granite monument, down 3'±.

July 9, 2010 - Found Cast Iron Monument down 0.2'± and updated ties.

December 22, 2016 - Found Cast Iron Monument down 0.5'± and verified location of corner by Static GPS methods. Also found Granite Monument and updated ties to both monuments.