

# CERTIFICATE OF LOCATION OF GOVERNMENT CORNER

County of Anoka

State of Minnesota

## North 1/4 Corner of Sec. 2 Township 30 Range 23

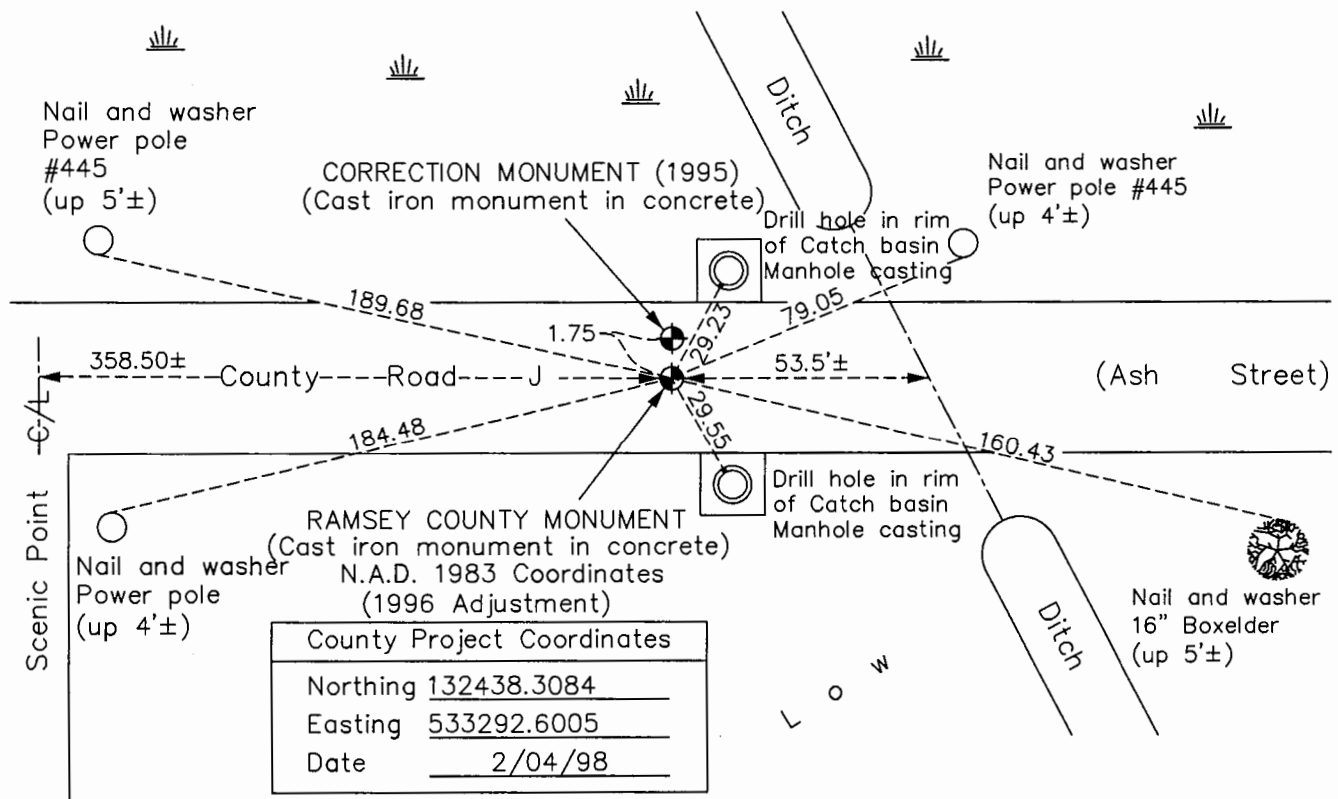
(Ramsey County Monument)

On the 29th day of October, 1964, the described corner was evidenced by a 6" square granite monument

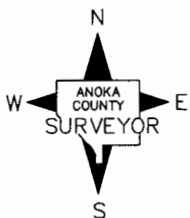
and to perpetuate the location of said corner, at the exact location thereof, a permanent marker was placed consisting of the same granite monument

AND on the 19th day of January, 2017, said permanent marker was found to be a Ramsey County cast iron monument set in concrete

Updated reference ties are as shown below.



County Project Coordinates	
Northing	132438.3084
Easting	533292.6005
Date	2/04/98



Revision Date  
6/5/17

'CORRECTION MONUMENT (1995)'  
N.A.D. 1983 Coordinates  
(1996 Adjustment)

County Project Coordinates	
Northing	132440.0623
Easting	533292.6582
Date	2/04/98

I hereby certify that this United States public land survey monument record is correct and complete to the best of my knowledge and belief.

*Larry D. Hoium* Date 9/06/17

Larry D. Hoium, Anoka County Surveyor  
Minnesota License Number 18165

## HISTORY OF GOVERNMENT CORNER

County of Anoka

State of Minnesota

North 1/4 Corner of Sec. 2 Township 30 Range 23  
(Ramsey County Monument)

**CORNER HISTORY:**

October 29, 1964 - Found 6" square Granite Monument with a drill hole in the center and flush with the surface. Monument is 1.5± north of centerline. Established ties to monument.

June 16, 1965 - Found Granite Monument and updated ties.

August 29, 1969 - Found Granite Monument and updated ties. Set P.K. nails 2.00' north and east of monument.

June 26, 1973 - Found Granite Monument and updated ties.

August 20, 1976 - Found Granite Monument and updated ties.

August 7, 1980 - Found Granite Monument and updated ties.

October 26, 1991 - Found Granite Monument and updated ties.

June 25, 1996 - Found Granite Monument and updated ties.

February 4, 1998 - Found Granite Monument and established NAD 1983 (1996 Adjustment) Anoka County Project Coordinates by Static GPS methods. Updated ties.

July 15, 2010 - Found a Ramsey County Cast Iron Monument set in concrete (date set is unknown) and updated ties.

January 19, 2017 - Found Ramsey County Cast Iron Monument set in concrete and verified location of corner by VRS GPS methods. Updated ties.