

# CERTIFICATE OF LOCATION OF GOVERNMENT CORNER

County of Anoka

State of Minnesota

## Northeast Corner of Sec. 2 Township 30 Range 23

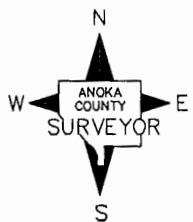
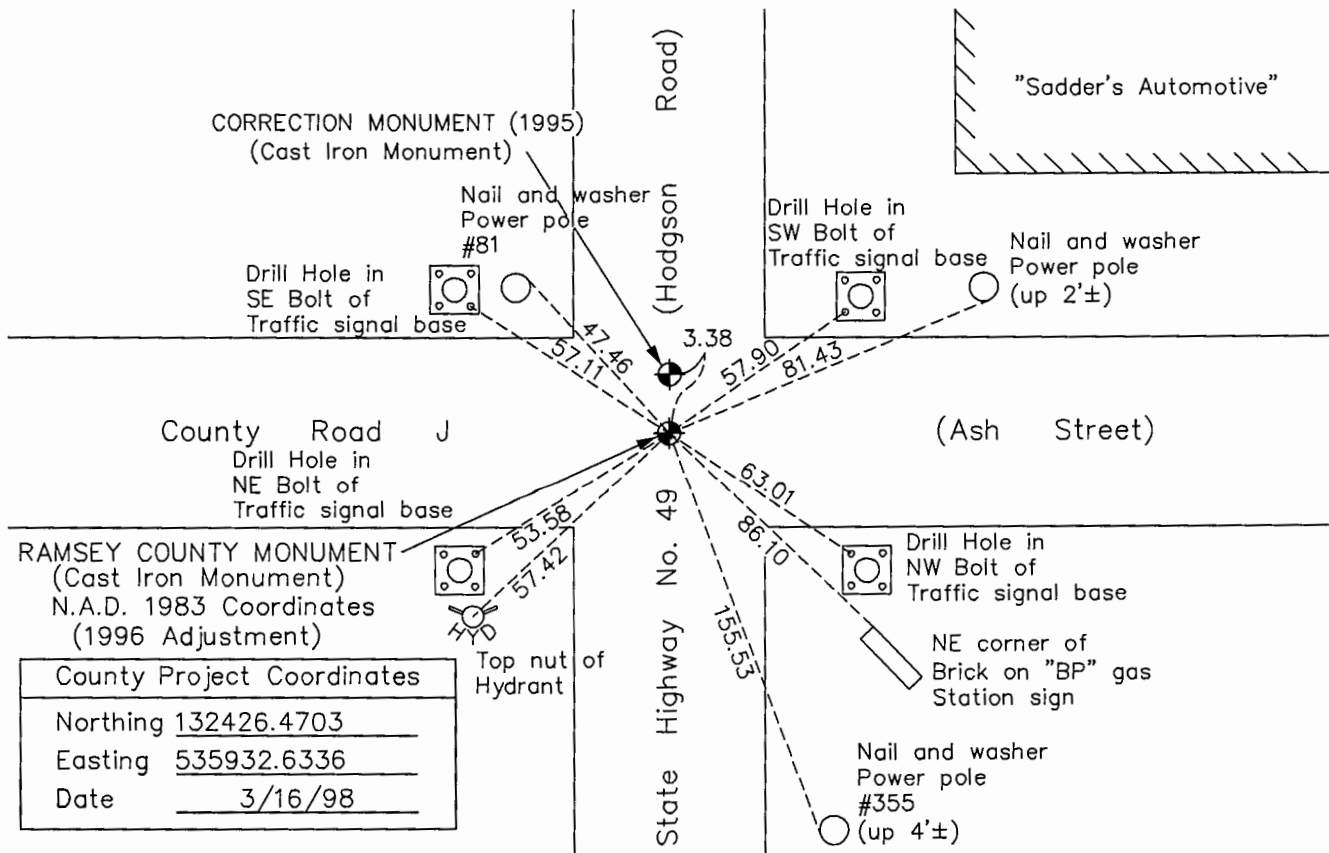
(Ramsey County monument)

On the 29th day of October, 1964, the described corner was evidenced by a 6" square granite monument

and to perpetuate the location of said corner, at the exact location thereof, a permanent marker was placed consisting of a cast iron monument

AND on the 17th day of January, 2017, said permanent marker was found and the ties were updated

Updated reference ties are as shown below.



Revision Date

6/5/17

'CORRECTION MONUMENT (1995)  
N.A.D. 1983 Coordinates  
(1996 Adjustment)

County Project Coordinates	
Northing	132429.7940
Easting	535932.7376
Date	3/16/98

I hereby certify that this United States public land survey monument record is correct and complete to the best of my knowledge and belief.

*Larry D. Hoium* Date 9/07/17

Larry D. Hoium, Anoka County Surveyor  
Minnesota License Number 18165

# HISTORY OF GOVERNMENT CORNER

County of Anoka

State of Minnesota

## Northeast Corner of Sec. 2 Township 30 Range 23 (Ramsey County monument)

### **CORNER HISTORY:**

October 29, 1964 - Found 6" Square Granite Monument with drill hole in center. Set P.K. Nails 2.00' north and east of monument. Established ties to monument.

June 16, 1965 - Found Granite Monument and updated ties.

August 27, 1969 - Found Granite Monument and updated ties. Set P.K. nail flush with surface on top of monument.

June 26, 1973 - Found Granite Monument and set 1/2" Iron Pipe in concrete flush with the surface on top of monument. Updated ties.

August 20, 1976 - Found Granite Monument and updated ties.

October 24, 1991 - Found Granite Monument and updated ties.

June 25, 1996 - Found Granite Monument and updated ties.

March 16, 1998- Found Granite Monument and established NAD 1983 ( 1996 Adjustment) Anoka County Project Coordinates by Static GPS methods. Updated ties.

August, 2010 - Found Granite Monument and updated ties.

January 17, 2017 - Found Cast Iron Monument and verified location of corner by VRS GPS methods. Updated ties.