

CERTIFICATE OF LOCATION OF GOVERNMENT CORNER

County of Anoka

State of Minnesota

North 1/4 Corner of Sec. 1 Township 30 Range 23

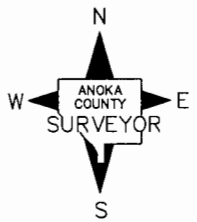
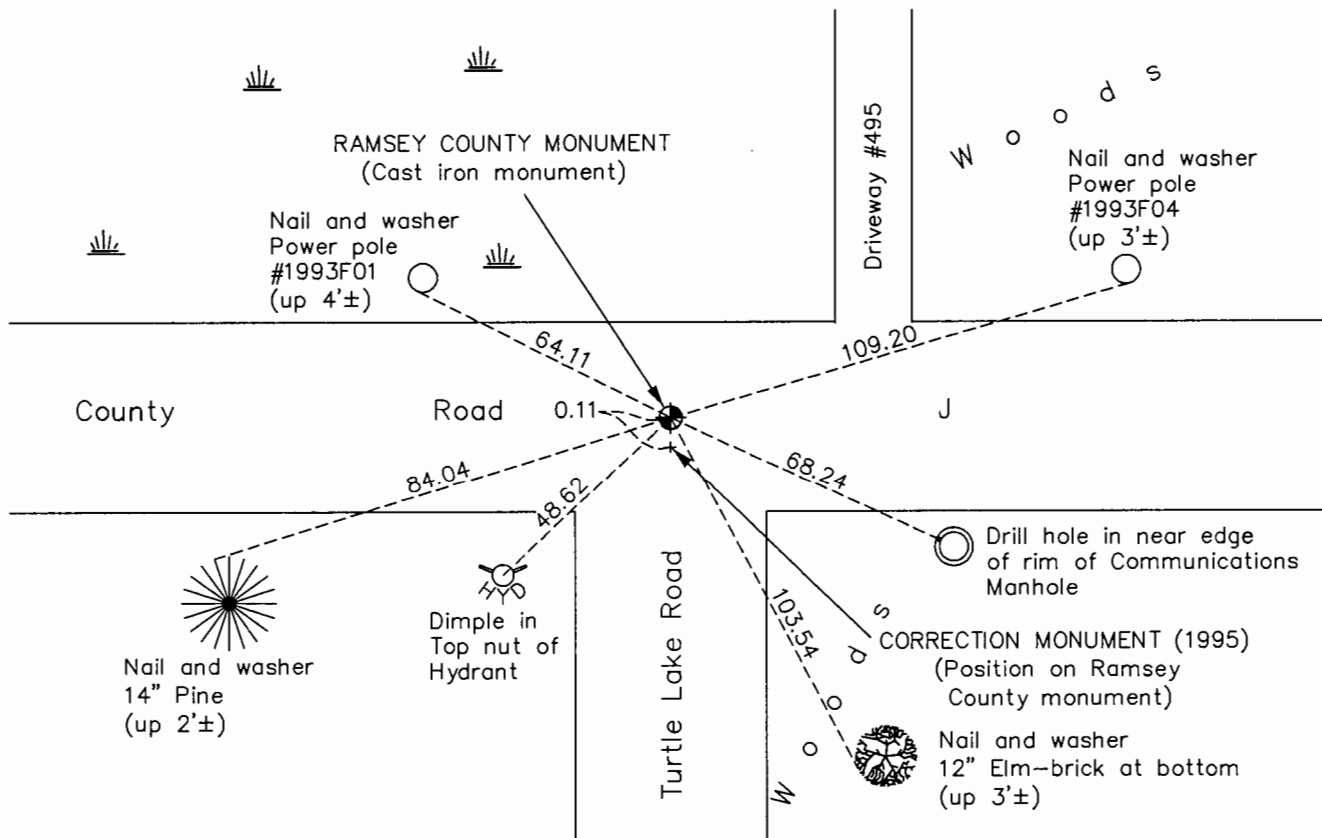
(Ramsey County monument)

On the 6th day of December, 1965, the described corner was evidenced by a cast iron monument

and to perpetuate the location of said corner, at the exact location thereof, a permanent marker was placed consisting of a cast iron monument in concrete

AND on the 20th day of January, 2017, said permanent marker was found down 0.1'± and the ties were updated

Updated reference ties are as shown below.



Revision Date
6/5/17

RAMSEY COUNTY MONUMENT
N.A.D. 1983 Coordinates
(1996 Adjustment)

County Project Coordinates	
Northing	<u>132428.3795</u>
Easting	<u>538571.7702</u>
Date	<u>3/23/98</u>

I hereby certify that this United States public land survey monument record is correct and complete to the best of my knowledge and belief.

Larry D. Hoium Date 9/07/17
 Larry D. Hoium, Anoka County Surveyor
 Minnesota License Number 18165

HISTORY OF GOVERNMENT CORNER

Page No. 154

County of Anoka

State of Minnesota

North 1/4 Corner of Sec. 1 Township 30 Range 23
(Ramsey County monument)

CORNER HISTORY:

December 6, 1965 - Found Cast Iron Monument labeled "Quarter Corner". Set P.K. Nails 2.00' north and east. Established ties to monument.

August 27, 1969 - Found Cast Iron Monument and updated ties.

June 27, 1973 - Found Cast Iron Monument and updated ties.

August 20, 1976 - Found Cast Iron Monument and updated ties.

July 8, 1986 - Found Cast Iron Monument in concrete and updated ties.

October 24, 1991 - Found Cast Iron Monument in concrete and updated ties.

June 25, 1996 - Found Cast Iron Monument in concrete and updated ties.

March 23, 1998 - Found Cast Iron Monument in concrete and established NAD 1983 (1996 Adjustment) Anoka County Project Coordinates by Static GPS methods. Updated ties.

August 3, 2010 - Found Cast Iron Monument down 0.1'± in concrete and updated ties.

January 20, 2017 - Found Cast Iron Monument down 0.1'± in concrete and verified location of corner by VRS GPS methods. Updated ties.