

CERTIFICATE OF LOCATION OF GOVERNMENT CORNER

County of Anoka

State of Minnesota

North $\frac{1}{4}$ Corner of Sec. 6 Township 30 Range 22

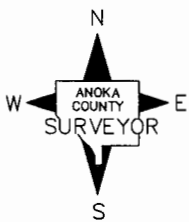
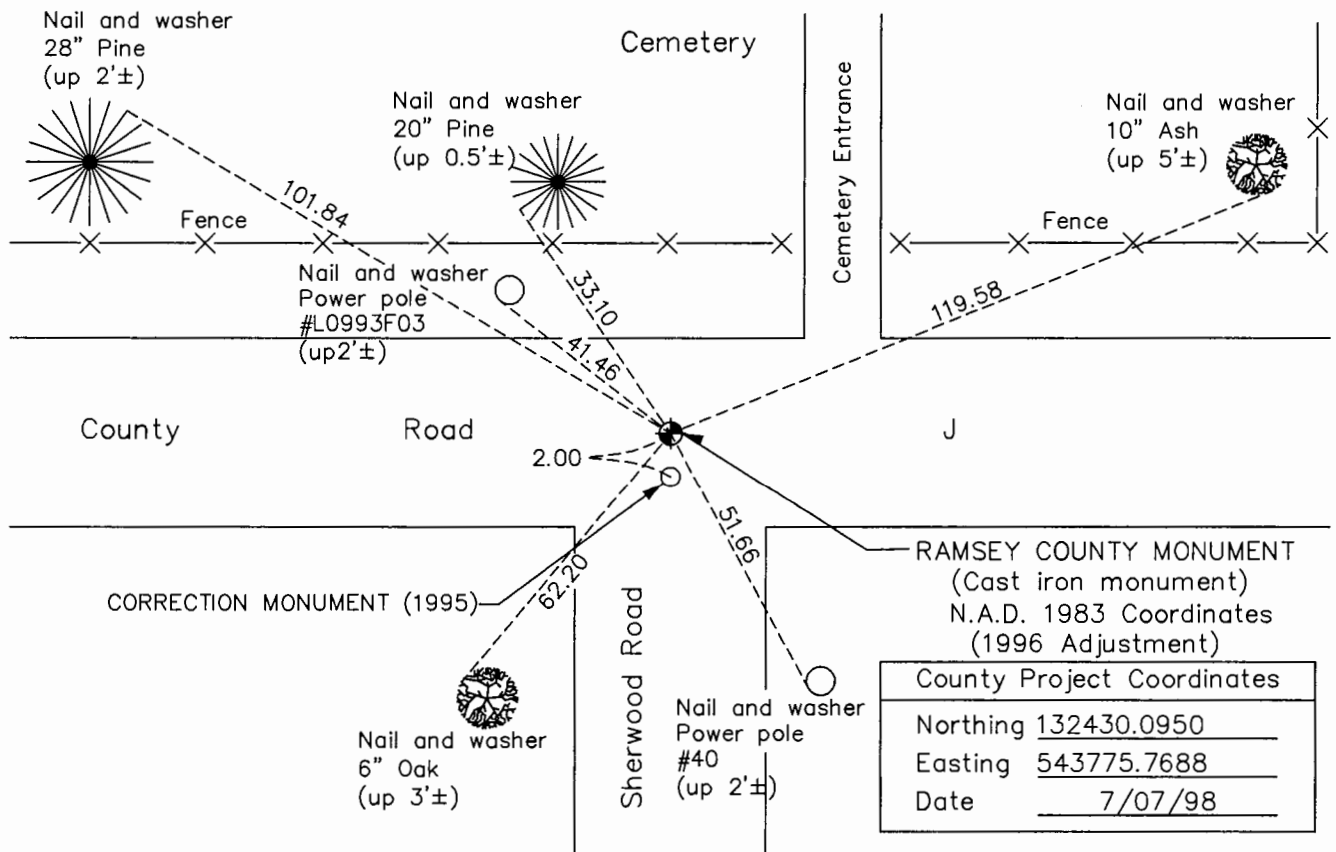
(Ramsey County monument)

On the 19th day of March, 1965, the described corner was evidenced by a 1/2" iron pipe

and to perpetuate the location of said corner, at the exact location thereof, a permanent marker was placed consisting of a cast iron monument top set in concrete

AND on the 20th day of January, 2017, said permanent marker was found down 0.1'± and the ties were updated

Updated reference ties are as shown below.



Revision Date
6/5/17

CORRECTION MONUMENT (1995)
N.A.D. 1983 Coordinates
(1996 Adjustment)

County Project Coordinates	
Northing	<u>132428.1091</u>
Easting	<u>543775.7501</u>
Date	<u>7/07/98</u>

I hereby certify that this United States public land survey monument record is correct and complete to the best of my knowledge and belief.

Larry D. Hoium Date 9/07/17

Larry D. Hoium, Anoka County Surveyor
Minnesota License Number 18165

HISTORY OF GOVERNMENT CORNER

Page No. 156

County of Anoka

State of Minnesota

North 1/4 Corner of Sec. 6 Township 30 Range 22
(Ramsey County monument)

CORNER HISTORY:

March 19, 1964 - Found 1/2" Iron Pipe flush with the surface that fits 2 remaining Ramsey County ties.
Established ties to monument.

June 16, 1965 - Found Iron Pipe and updated ties.

August 27, 1969 - Found Iron Pipe and updated ties.

June 27, 1973 - Found Iron Pipe and updated ties.

August 20, 1976 - Found Iron Pipe and updated ties.

June 25, 1996 - Found Cast Iron top set in concrete (date set unknown) and updated ties.

July 7, 1998 - Found Cast Iron top set in concrete and established NAD 1983 (1996 Adjustment) Anoka County Project Coordinates by Static GPS methods. Updated ties.

July 30, 2010 - Found Cast Iron Monument top set in concrete flush with the surface and updated ties.

January 20, 2017 - Found Cast Iron Monument top set in concrete down 0.1'± and verified location of corner by VRS GPS methods. Updated ties.