

CERTIFICATE OF LOCATION OF GOVERNMENT CORNER

County of Anoka

State of Minnesota

Northeast Corner of Sec. 6 Township 30 Range 22

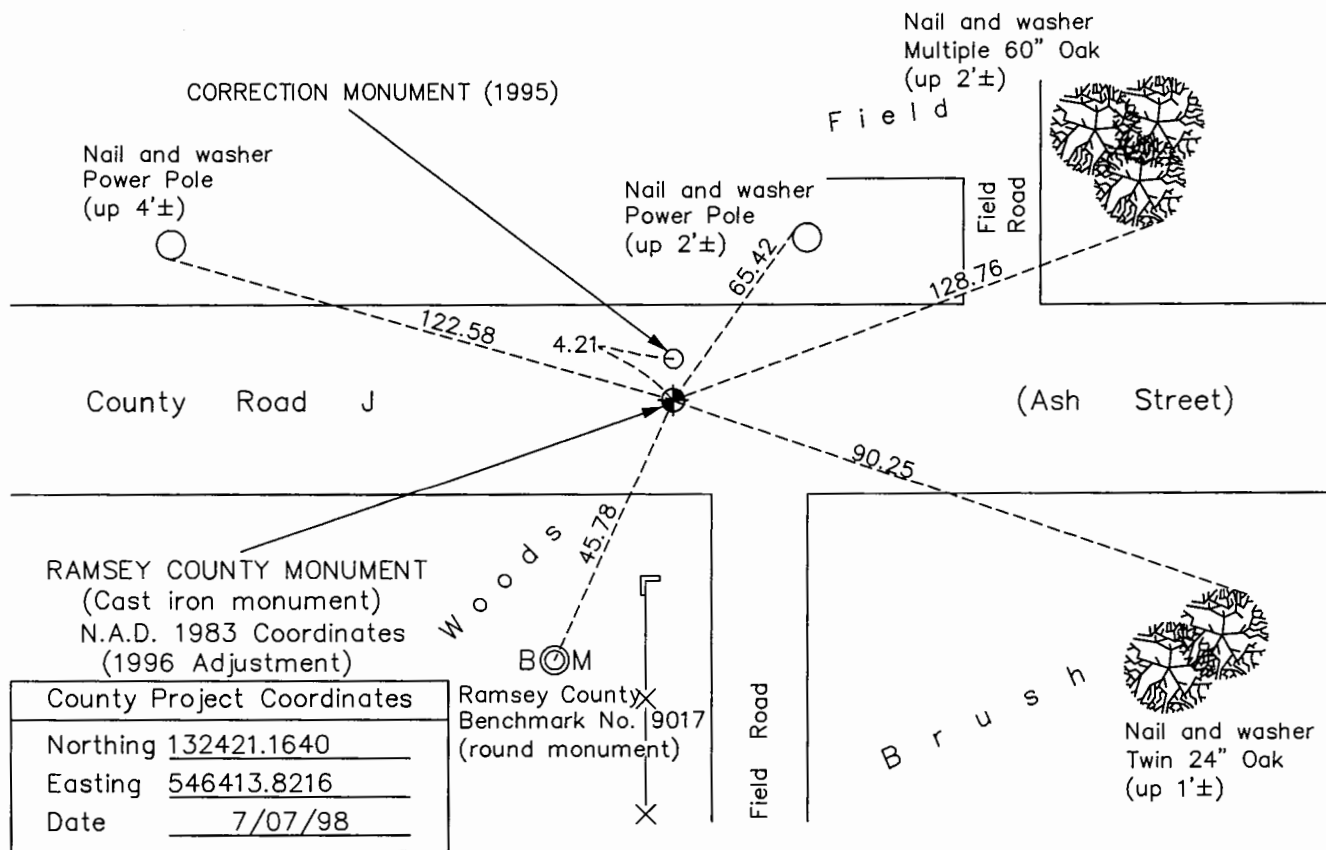
(Ramsey County monument)

On the 7th day of January, 1965, the described corner was evidenced by a granite monument

and to perpetuate the location of said corner, at the exact location thereof, a permanent marker was placed consisting of a cast iron monument down 0.1'±

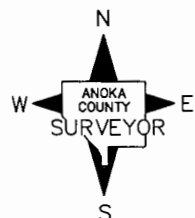
AND on the 24th day of January, 2017, said permanent marker was found down 0.1'± and the ties were updated

Updated reference ties are as shown below.



County Project Coordinates	
Northing	<u>132421.1640</u>
Easting	<u>546413.8216</u>
Date	<u>7/07/98</u>

Ramsey County
Benchmark No. 9017
(round monument)



Revision Date

6/5/17

CORRECTION MONUMENT (1995)

N.A.D. 1983 Coordinates
(1996 Adjustment)

County Project Coordinates	
Northing	<u>132425.3774</u>
Easting	<u>546413.6765</u>
Date	<u>7/07/98</u>

I hereby certify that this United States public land survey monument record is correct and complete to the best of my knowledge and belief.

Larry D. Hoium Date 7/07/17

Larry D. Hoium, Anoka County Surveyor
Minnesota License Number 18165

HISTORY OF GOVERNMENT CORNER

Page No. 157

County of Anoka

State of Minnesota

Northeast Corner of Sec. 6 Township 30 Range 22

(Ramsey County monument)

CORNER HISTORY:

January 7, 1965 - Found Ramsey County Granite Monument down 0.1'± . Set P.K. Nails 2.00' north and east of monument. Established ties to monument.

June 16, 1965 - Found Granite Monument and updated ties.

August 29, 1969 - Found Granite Monument down 0.3'± leaning 0.41' due west of tie point. Updated ties.

June 27, 1973 - Found Granite Monument and updated ties.

June 8, 1977 - Found Granite Monument and updated ties.

June 25, 1996 - Found Granite Monument and updated ties.

July 7, 1998 - Found Granite Monument and established NAD 1983 (1996 Adjustment) Anoka County Project Coordinates by Static GPS methods. Updated ties.

August 17, 2010 - Found Cast Iron Monument down 0.1'± (date set unknown) and updated ties.

January 24, 2017 - Found Cast Iron Monument down 0.1'± and verified location of corner by VRS GPS methods. Updated ties.