

# CERTIFICATE OF LOCATION OF GOVERNMENT CORNER

County of Anoka

State of Minnesota

## North $\frac{1}{4}$ Corner of Sec. 5 Township 30 Range 22

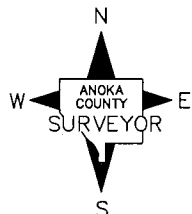
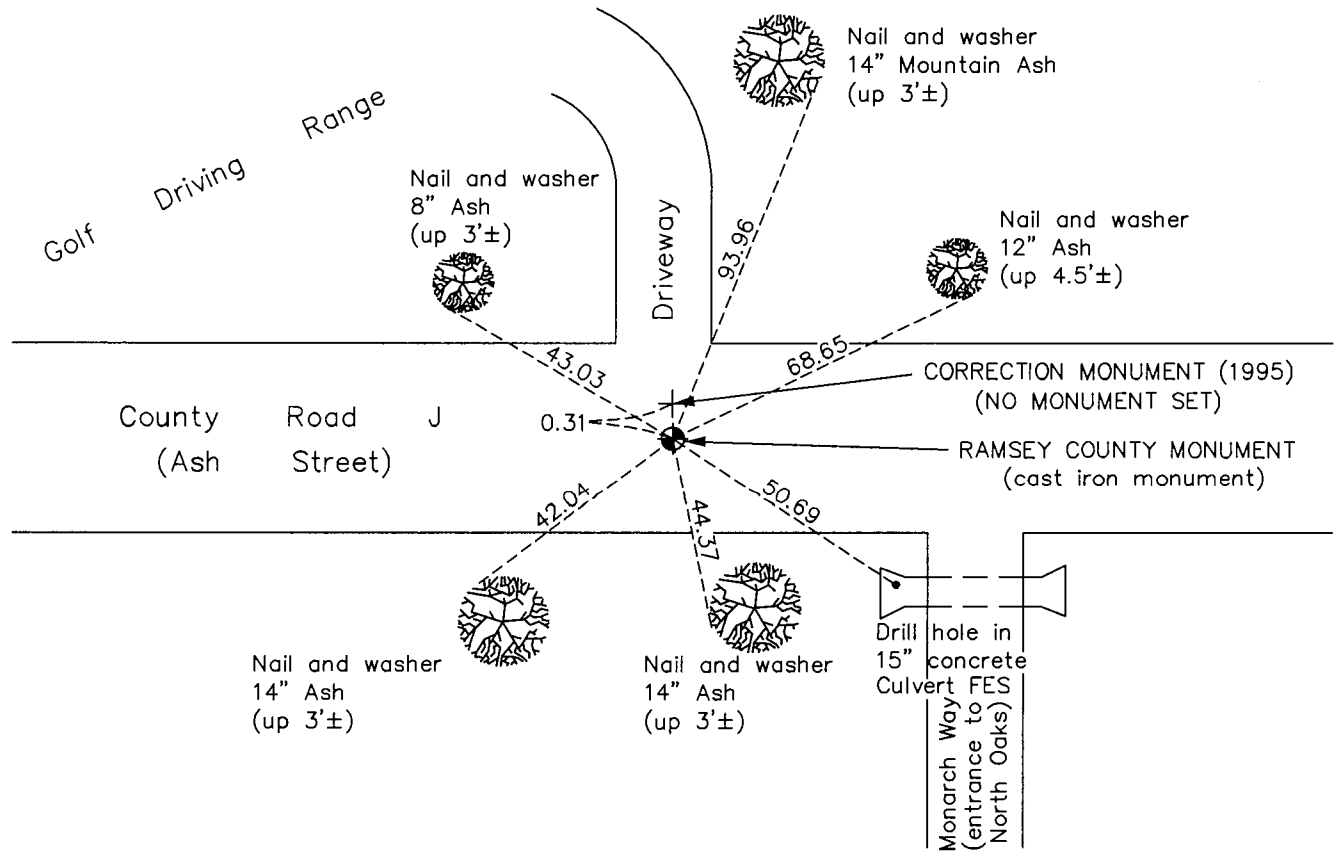
(Ramsey County monument)

On the 22nd day of January, 1965, the described corner was evidenced by a 6" square monument

and to perpetuate the location of said corner, at the exact location thereof, a permanent marker was placed consisting of a cast iron monument down 0.1'±

AND on the 9th day of January, 2017, said permanent marker was found down 0.1'± and the ties were updated

Updated reference ties are as shown below.



Revision Date  
6/5/17

RAMSEY COUNTY MONUMENT  
N.A.D. 1983 Coordinates  
(1996 Adjustment)

County Project Coordinates	
Northing	<u>132429.2111</u>
Easting	<u>549055.3488</u>
Date	<u>3/23/98</u>

I hereby certify that this United States public land survey monument record is correct and complete to the best of my knowledge and belief.

*Larry D. Hoium* Date 9/07/17

Larry D. Hoium, Anoka County Surveyor  
Minnesota License Number 18165

# HISTORY OF GOVERNMENT CORNER

Page No. 158

County of Anoka

State of Minnesota

North 1/4 Corner of Sec. 5 Township 30 Range 22  
(Ramsey County monument)

## **CORNER HISTORY:**

January 22, 1965 - Found 6" Square Ramsey County Granite Monument down 5"± with lag screw over drill hole and down 1/2". Set P.K. Nails 2.00' north and east of monument. Established ties to monument.

June 16, 1965 - Found Granite Monument and updated ties.

August 29, 1969 - Found Granite Monument and updated ties.

June 27, 1973 - Found Granite Monument and updated ties.

June 8, 1977- Found Granite Monument and updated ties.

July 9, 1986 - Found Granite Monument and updated ties.

October 24, 1991 - Found Granite Monument and updated ties.

June 25, 1996 - Found Granite Monument and updated ties.

March 23, 1998 - Found Granite Monument and established NAD 1983 ( 1996 Adjustment) Anoka County Project Coordinates by Static GPS methods. Updated ties.

August 12, 2010 - Found Cast Iron Monument ( date set unknown) and updated ties.

January 9, 2017 - Found Cast Iron Monument and verified location of corner by VRS GPS methods. Updated ties.