

CERTIFICATE OF LOCATION OF GOVERNMENT CORNER

County of Anoka

State of Minnesota

Northeast Corner of Sec. 3 Township 30 Range 22

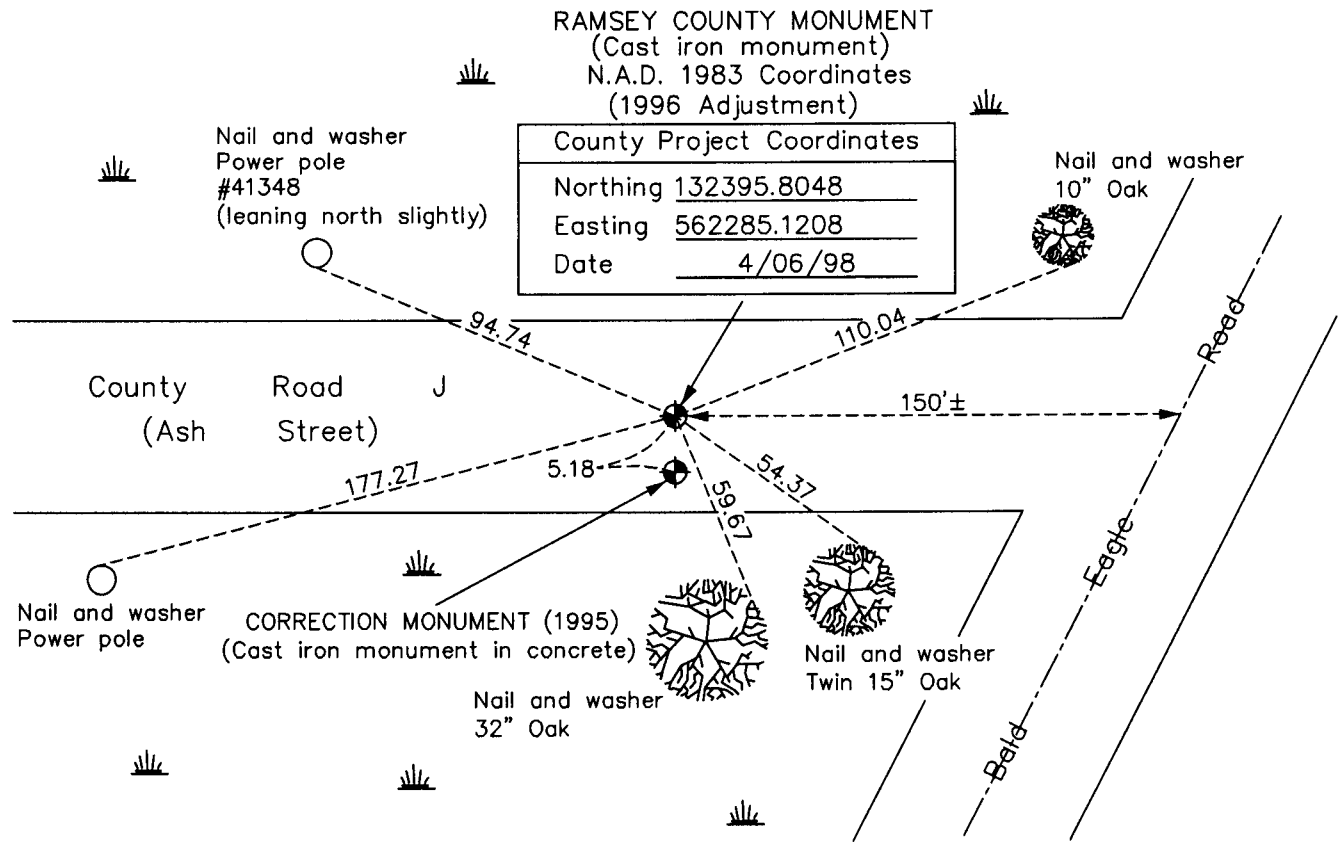
(Ramsey County monument)

On the ____ day of _____, _____, the described corner was evidenced by a granite monument

and to perpetuate the location of said corner, at the exact location thereof, a permanent marker was placed consisting of the same granite monument

AND on the 19th day of July, 2010, said permanent marker was found to be a cast iron monument down 0.1'± and the ties were updated

Updated reference ties are as shown below.

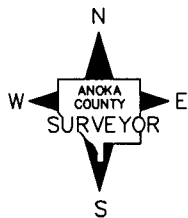


RAMSEY COUNTY MONUMENT
 (Cast iron monument)
 N.A.D. 1983 Coordinates
 (1996 Adjustment)

County Project Coordinates	
Northing	132395.8048
Easting	562285.1208
Date	4/06/98

CORRECTION MONUMENT (1995)
 N.A.D. 1983 Coordinates
 (1996 Adjustment)

County Project Coordinates	
Northing	132390.5512
Easting	562285.1172
Date	4/06/98



Revision Date
 3/01/11

I hereby certify that this United States public land survey monument record is correct and complete to the best of my knowledge and belief.
Larry D. Hoium Date 3/01/11
 Larry D. Hoium, Anoka County Surveyor
 Minnesota License Number 18165