

CERTIFICATE OF LOCATION OF GOVERNMENT CORNER

County of Anoka State of Minnesota

EAST 1/4 Corner of Sec. 29 Township 32 Range 25

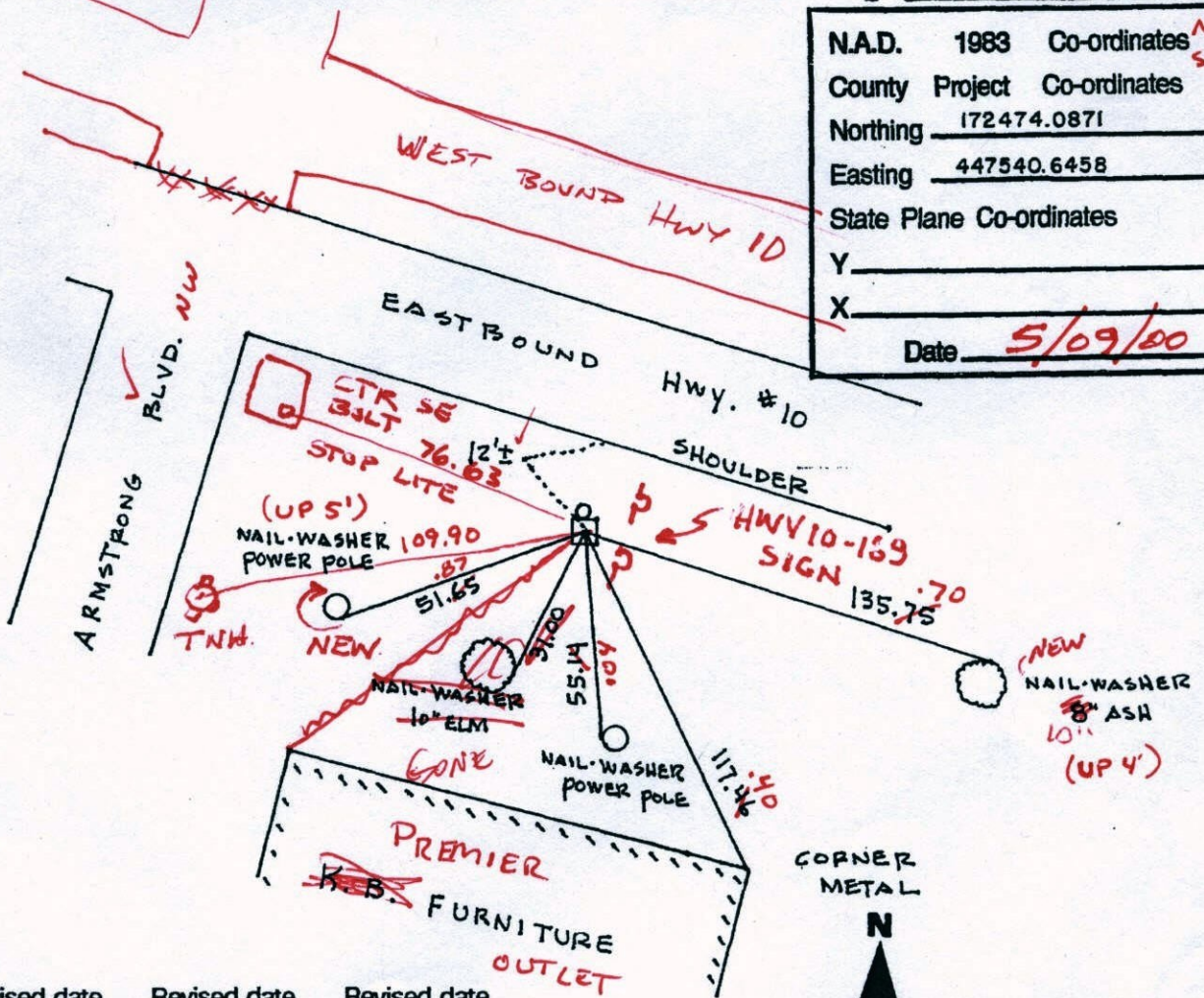
I hereby certify that on the 20TH day of APRIL, 19 61, I found the described corner which was evidenced by CONCRETE MONUMENT

and I further certify that to perpetuate the location of said corner, I did, at the exact location thereof, place a permanent marker consisting of SAME WITH 1" IRON PIPE ON NORTH EAST SIDE (DOWN 1.5') (NO SIGN) PUT SIGN AND POST ON

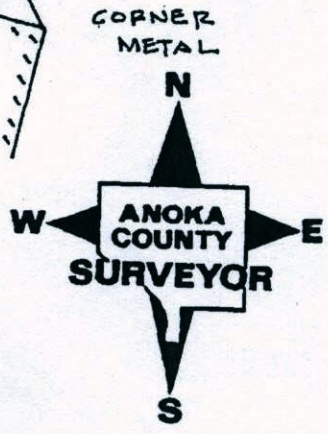
which reference or witness monuments are located in the manner following:

N.A.D.	1983	Co-ordinates	NORTH SITE.
County	Project	Co-ordinates	
Northing	172474.0871		
Easting	447540.6458		
State Plane Co-ordinates			
Y _____			
X _____			
Date		<u>5/09/00</u>	

BK-SH
4/21/10
TIT



Revised date	Revised date	Revised date
6/20/69	5/9/00	
6/25/72		
8/7/79		
8/16/82		
7/19/85		
6/27/88		
8/10/93		



CERTIFICATE OF LOCATION OF GOVERNMENT CORNER

County of Anoka

State of Minnesota

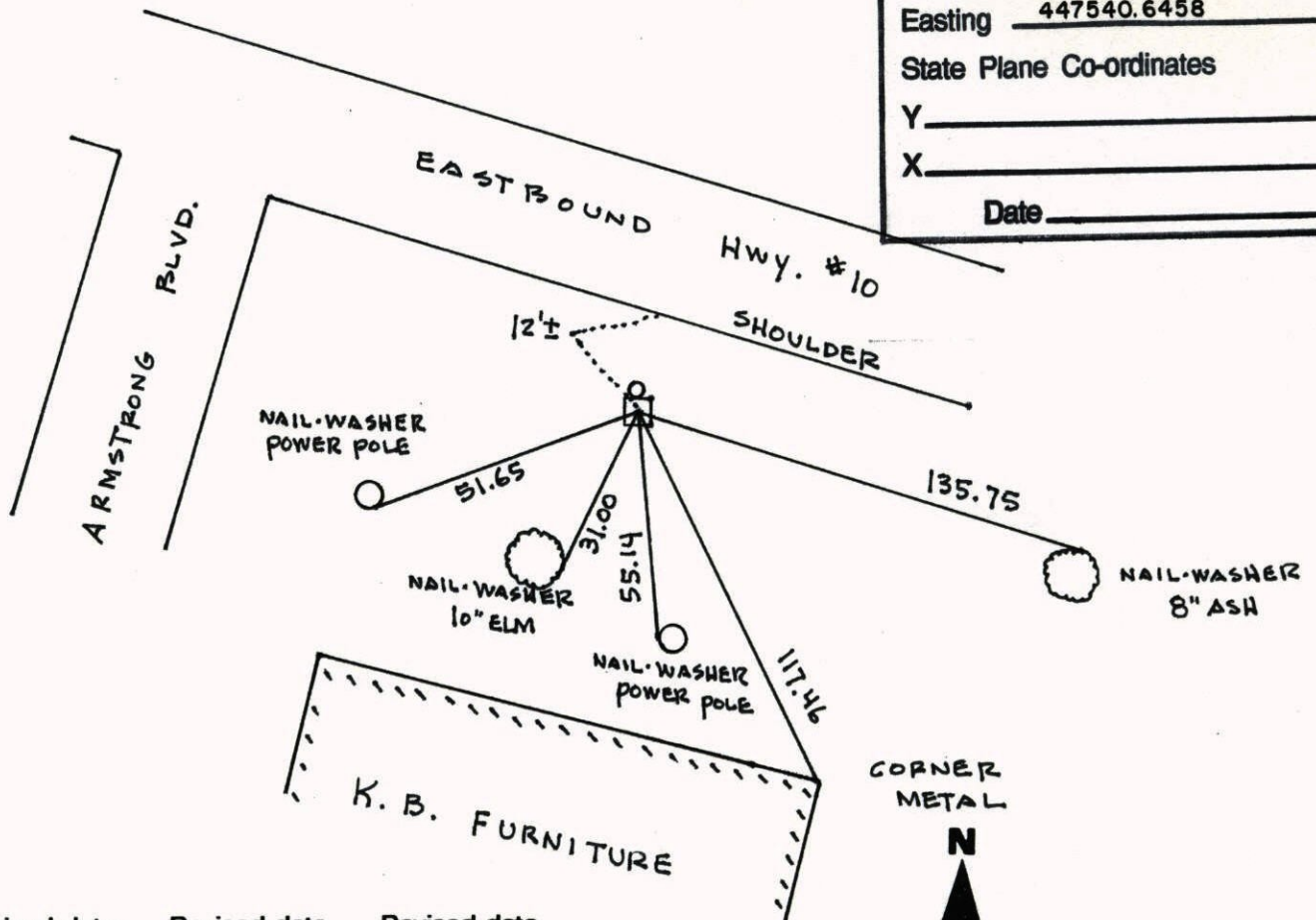
EAST 1/4 Corner of Sec. 29 Township 32 Range 25

I hereby certify that on the 20TH day of APRIL, 19 61, I found the described corner which was evidenced by CONCRETE MONUMENT

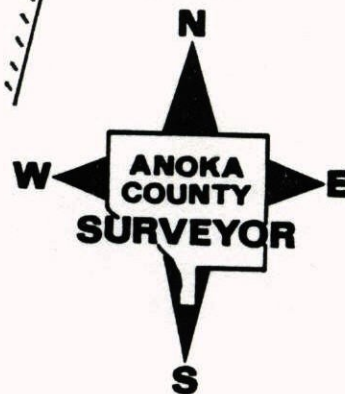
and I further certify that to perpetuate the location of said corner, I did, at the exact location thereof, place a permanent marker consisting of SAME WITH 1" IRON PIPE ON NORTH SIDE (DOWN 1.5'±)

which reference or witness monuments are located in the manner following:

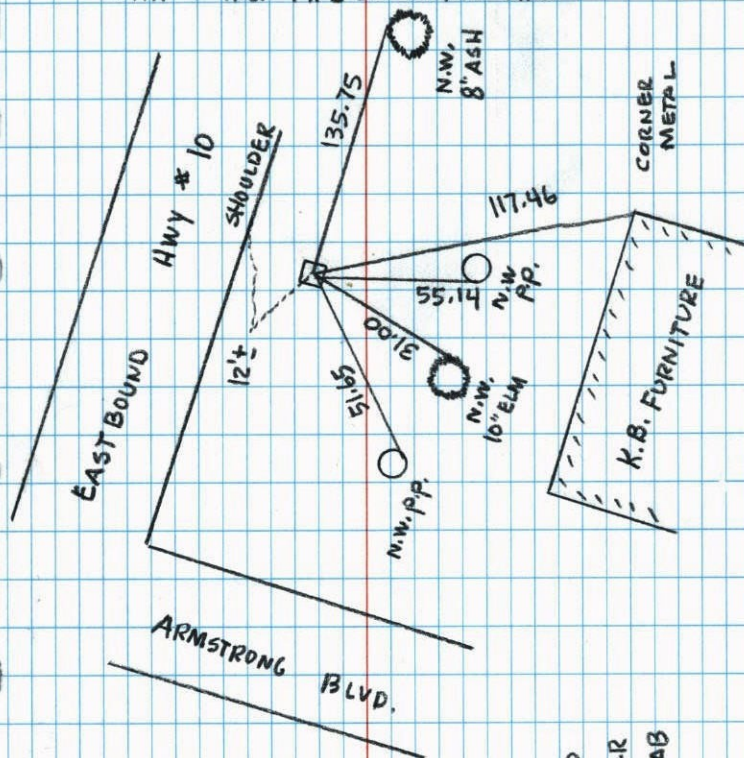
N.A.D.	1983	Co-ordinates
County	Project	Co-ordinates
Northing	<u>172474.0871</u>	
Easting	<u>447540.6458</u>	
State Plane Co-ordinates		
Y	_____	
X	_____	
Date _____		



Revised date	Revised date	Revised date
6/20/69	5/9/00	
6/25/72		
8/7/79		
8/16/82		
7/19/85		
6/27/88		
8/10/93		



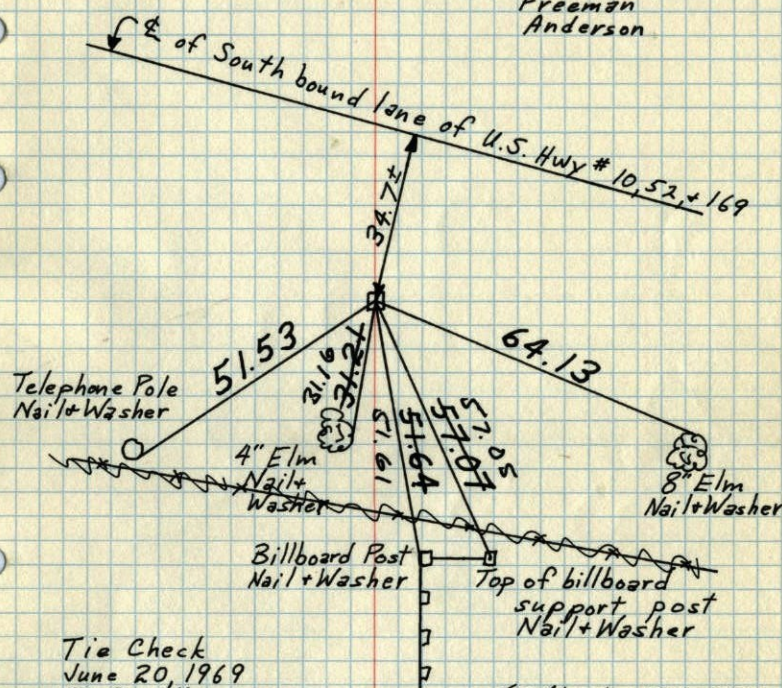
EAST 1/4 COR. SEC 29 T 32 R 25

GPS & RETIED CONCRETE MONUMENT
WITH 1" IRON PIPE ON NORTH SIDEARMSTRONG
BLVD.5-9-00
J. SIMMER
T. SCHWAB

NO. 446

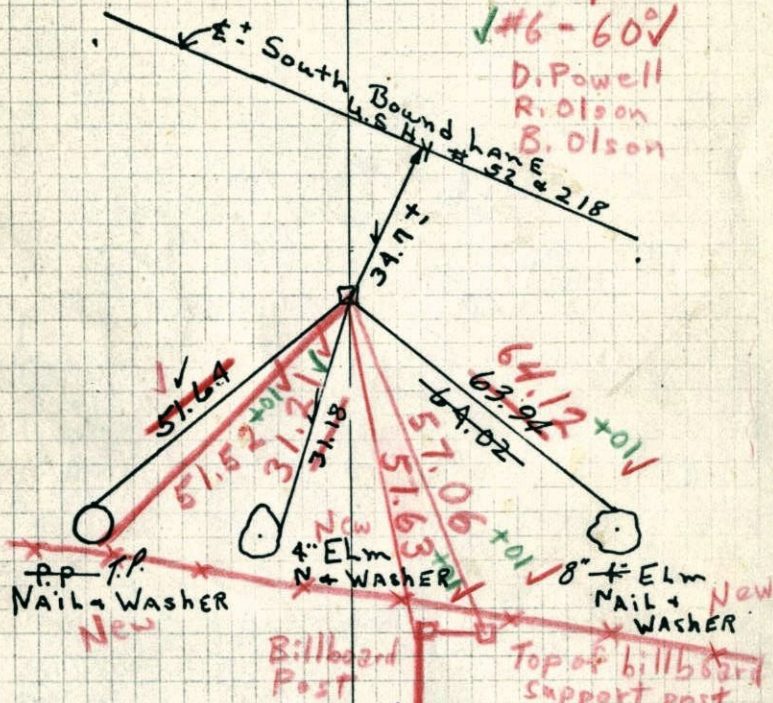
NATIONAL PRINTFAST

E 1/4 Cor. Sec. 29-T32-R25

Found Concrete Mon. from old ties-down 1.0'±
in centerline ditch of Highway. Set 1/2" Iron
Pipes on East and West faces of Monument.
April 20, 1961
Freeman
AndersonTie Check
June 20, 1969
D. Powell
R. Olson
B. OlsonTIE CHECK
G. ADAMS
B. SANNERUD
S. BRIENTie Check
6-25-79
B Stephens
P RossTie Check
8/7/72
B. Olson
J. Boetcher
R. Bauer
all ties O.K.TIE CHECK
8-16-82
P. ROSS
P. HORNBYTEMPERATURE CORRECTED
AND HORIZONTALLY
TAPED MEASUREMENTSROLAND W. ANDERSON
COUNTY SURVEYOR
ANOKA COUNTY, MINNESOTA

E 1/4 COR SEC 29-32-25 RAMSEY
 Found Conc. Mon from old ties-down ~~0.6'~~ ^{1.0'}
 in E ditch of Hwy. SET 1/2" IRON on
 E. & W FACES of mon.

6/20/69
 #6-60'
 D. Powell
 R. Olson
 B. Olson



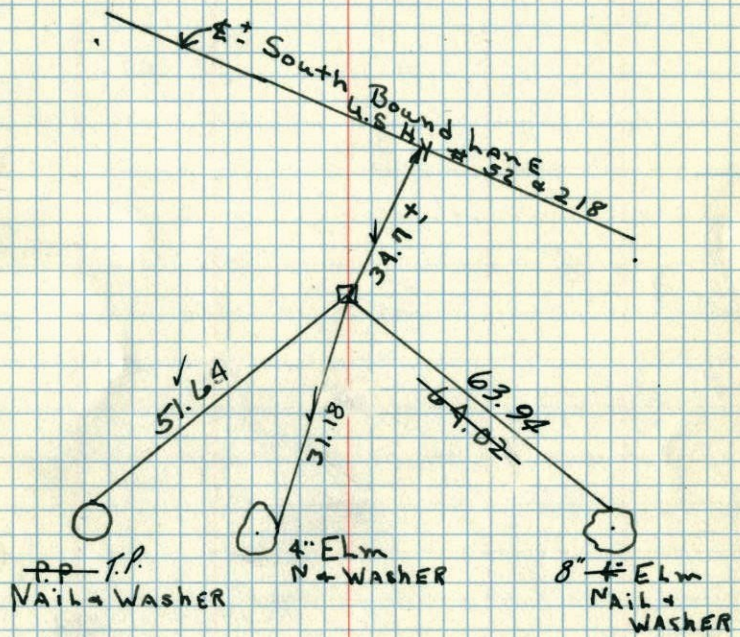
TEMPERATURE CORRECTED
 AND HORIZONTALLY
 TAPED MEASUREMENTS

4-20-61
 FREEMAN-ANDERSON
 Temp CORR +40°

Retie 8/7/64
 M. D. Anderson
 R. Carlson

ROLAND W. ANDERSON
 COUNTY SURVEYOR
 ANOKA COUNTY, MINNESOTA

E 1/4 COR SEC 29-32-25 RAMSEY
 Found Conc. Mon from old ties-down 0.6'
 in E ditch of Hwy. SET 1/2" IRON on
 E. & W FACES of mon.



TEMPERATURE CORRECTED
 AND HORIZONTALLY
 TAPED MEASUREMENTS

4-20-61
 FREEMAN-ANDERSON
 Temp CORR +40°

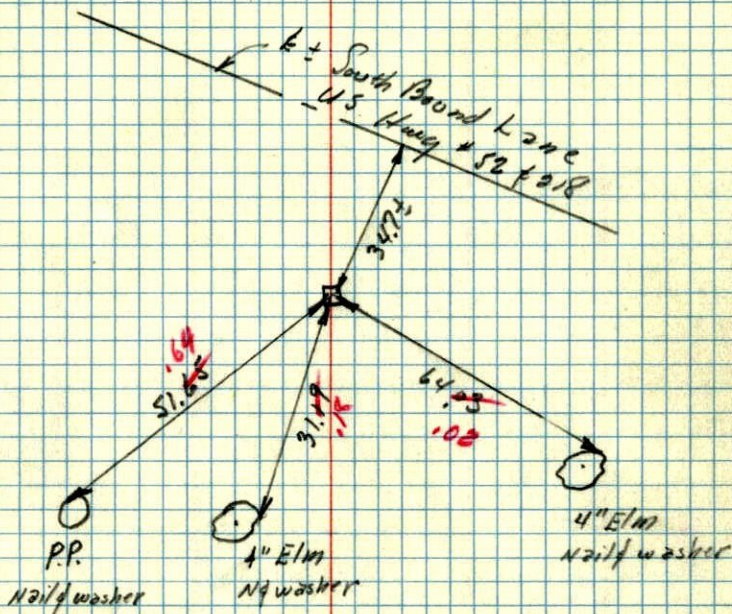
Retie 8/7/64
 M. D. Anderson
 R. Carlson

ROLAND W. ANDERSON
 COUNTY SURVEYOR
 ANOKA COUNTY, MINNESOTA

20 April 1961
 Freeman Anderson
 + 40°

E 1/4 Cor Sec 29-32-25 Ramsey

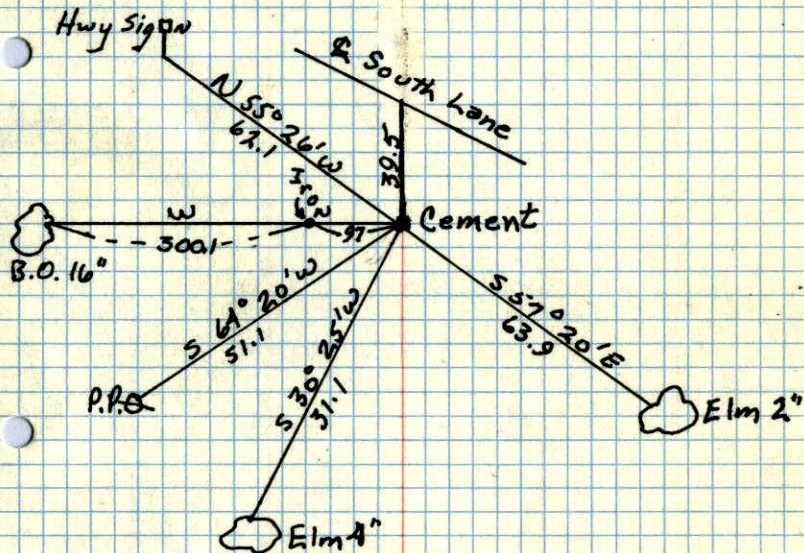
Found Conc Mon from old ties - down 0.6' in ditch of Hwy. Set 1/2" irms on E & W faces of Mon.



Temp. Corr.

E 1/4 CORNER OF SEC. 29, T 32, R 25

CONC. DOWN 6"



Sept. 14, 1943
 CARTWRIGHT