

RAM 117 ~~117~~

T/T-VRS 11/16/12

JS-SS-SH

BLDG. COR.
MIDDLE 6th BLOCK UP
FROM ~~GROUND~~ GROUND
(REFLECTORLESS)

PUNCH MARK
⊕ N.E. BOLT
LIGHT SEMI-FORE



298.34

93.34

PUNCH MARK
⊕ S.E. BOLT
LIGHT SEMI-FORE



113.61

148.78

PUNCH MARK
⊕ S.E. BOLT
GAS STATION SIGN



ROAD
LOCATION
SAME
AS
ON ORIG.
TIE

93.52

73.33

163.68



PUNCH MARK
⊕ S.E. ~~BOLT~~
LIGHT SEMI-FORE



PUNCH MARK
⊕ N.E. BOLT
LIGHT SEMI-FORE

CONC. BLOCK COR.
(UP 6')
(REFLECTORLESS)

VRS 3D = 0.06

N = 169803.1553

E = 458063.1701

24TH OCT 8/4/05

CERTIFICATE OF LOCATION OF GOVERNMENT CORNER

County of Anoka

State of Minnesota

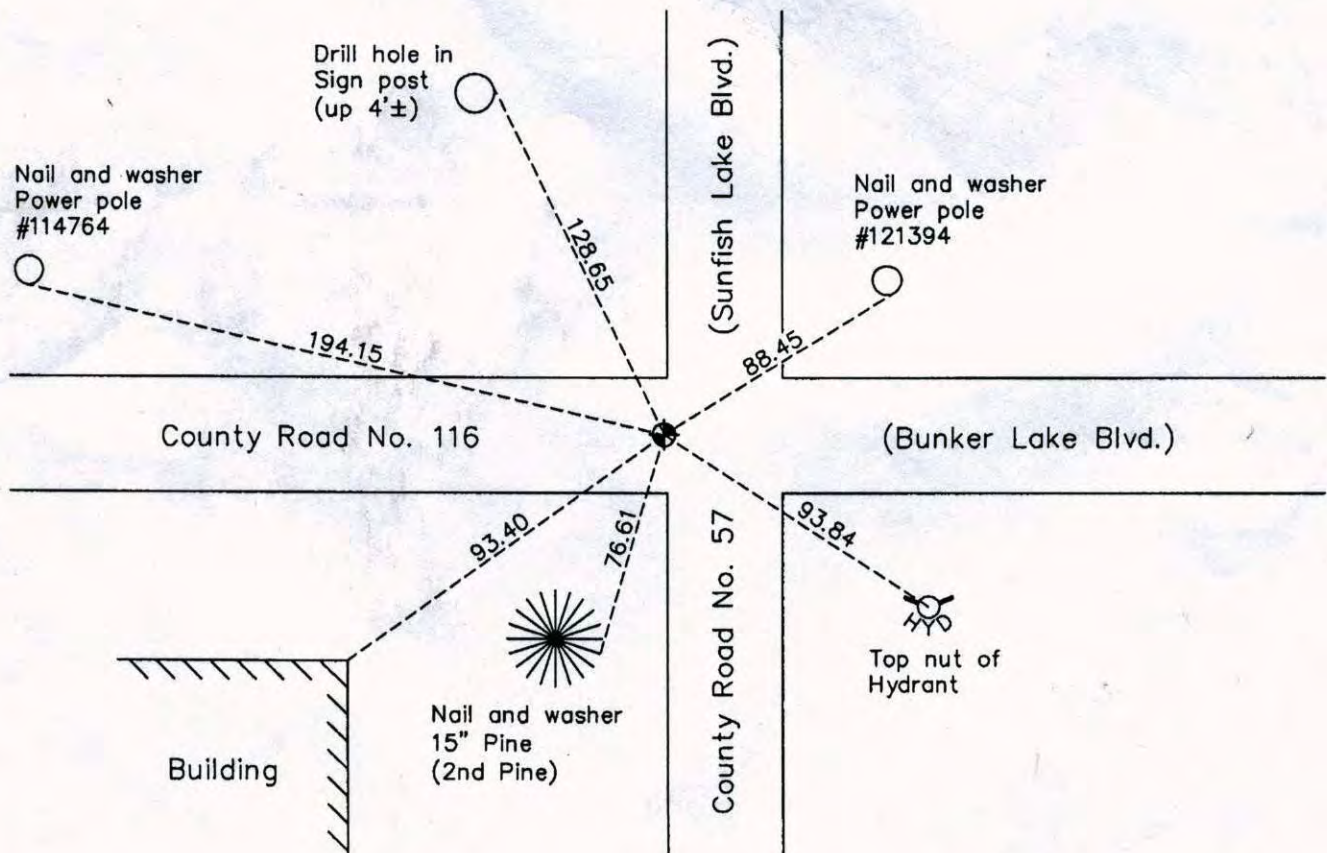
Northwest Corner of Sec. 35 Township 32 Range 25

On the 21st day of April, 1961, the described corner was evidenced by a concrete monument

and to perpetuate the location of said corner, at the exact location thereof, a permanent marker was placed consisting of a cast iron monument

AND on the 5th day of April, 2010, said permanent marker was found and the ties were updated

Updated reference ties are as shown below.



N
W ANOKA COUNTY SURVEYOR E
S

Revision Date
8/06/10

N.A.D. 1983 Coordinates
(1996 Adjustment)

County Project Coordinates	
Northing	169803.1345
Easting	458063.2075
Date	8/30/99

I hereby certify that this United States public land survey monument record is correct and complete to the best of my knowledge and belief.

Larry D. Hoium Date: 8/06/10
 Larry D. Hoium, Anoka County Surveyor
 Minnesota License Number 18165

CERTIFICATE OF LOCATION OF GOVERNMENT CORNER

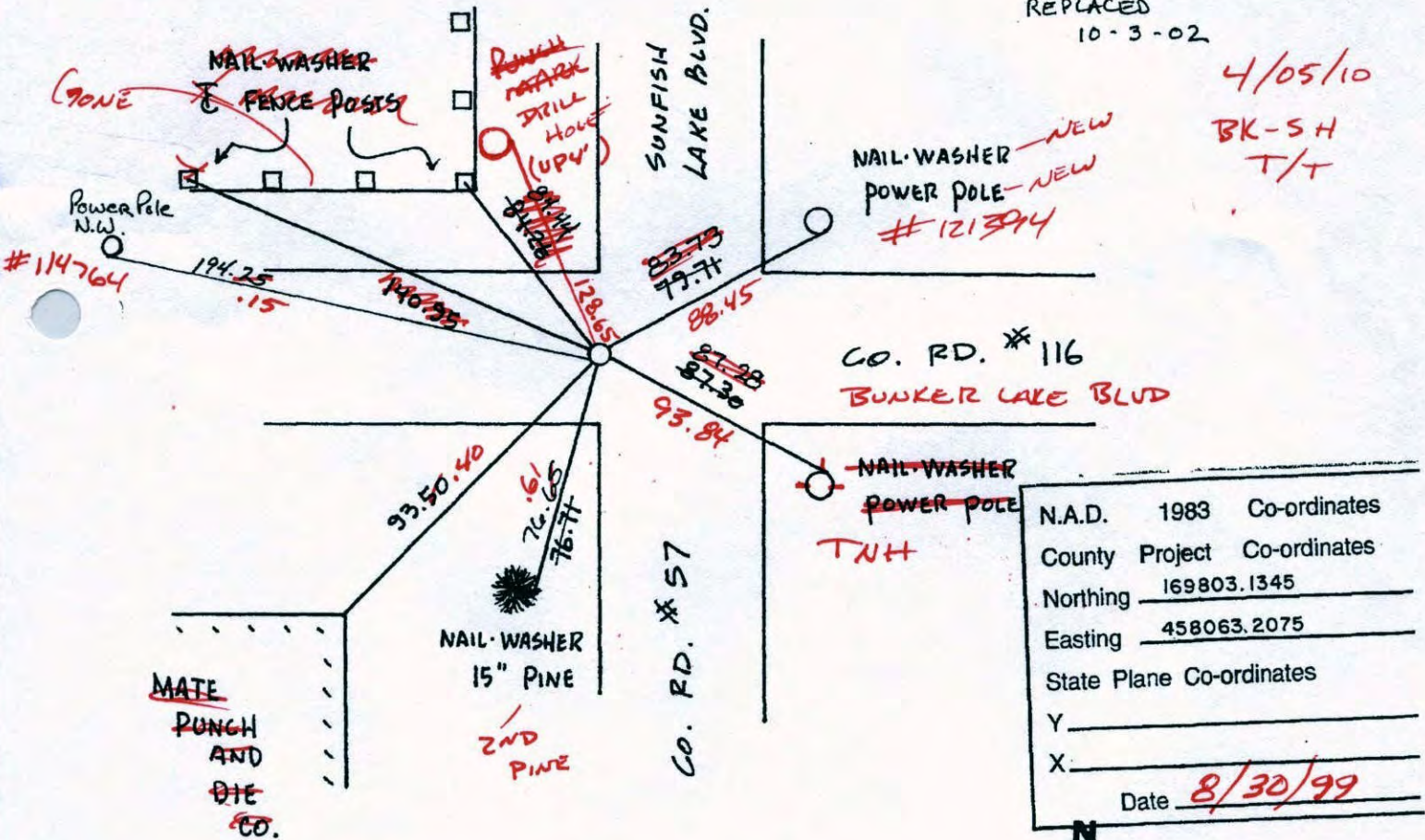
County of Anoka State of Minnesota

NORTHWEST Corner of Sec. 35 Township 32 Range 25

I hereby certify that on the 21ST day of APRIL, 1961, I found the described corner which was evidenced by CONCRETE MONUMENT

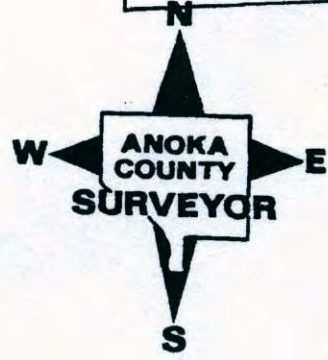
and I further certify that to perpetuate the location of said corner, I did, at the exact location thereof, place a permanent marker consisting of CAST IRON MONUMENT

which reference or witness monuments are located in the manner following: REMOVED FOR CONSTRUCTION
7-29-02
REPLACED
10-3-02



N.A.D.	1983	Co-ordinates
County	Project	Co-ordinates
Northing		169803.1345
Easting		458063.2075
State Plane Co-ordinates		
Y	_____	
X	_____	
Date	8/30/99	

Revised date	Revised date	Revised date
8-23-82		
7-17-85		
6-16-88		
8-4-93		
8-30-99		
7-29-02		



CERTIFICATE OF LOCATION OF GOVERNMENT CORNER

County of Anoka

State of Minnesota

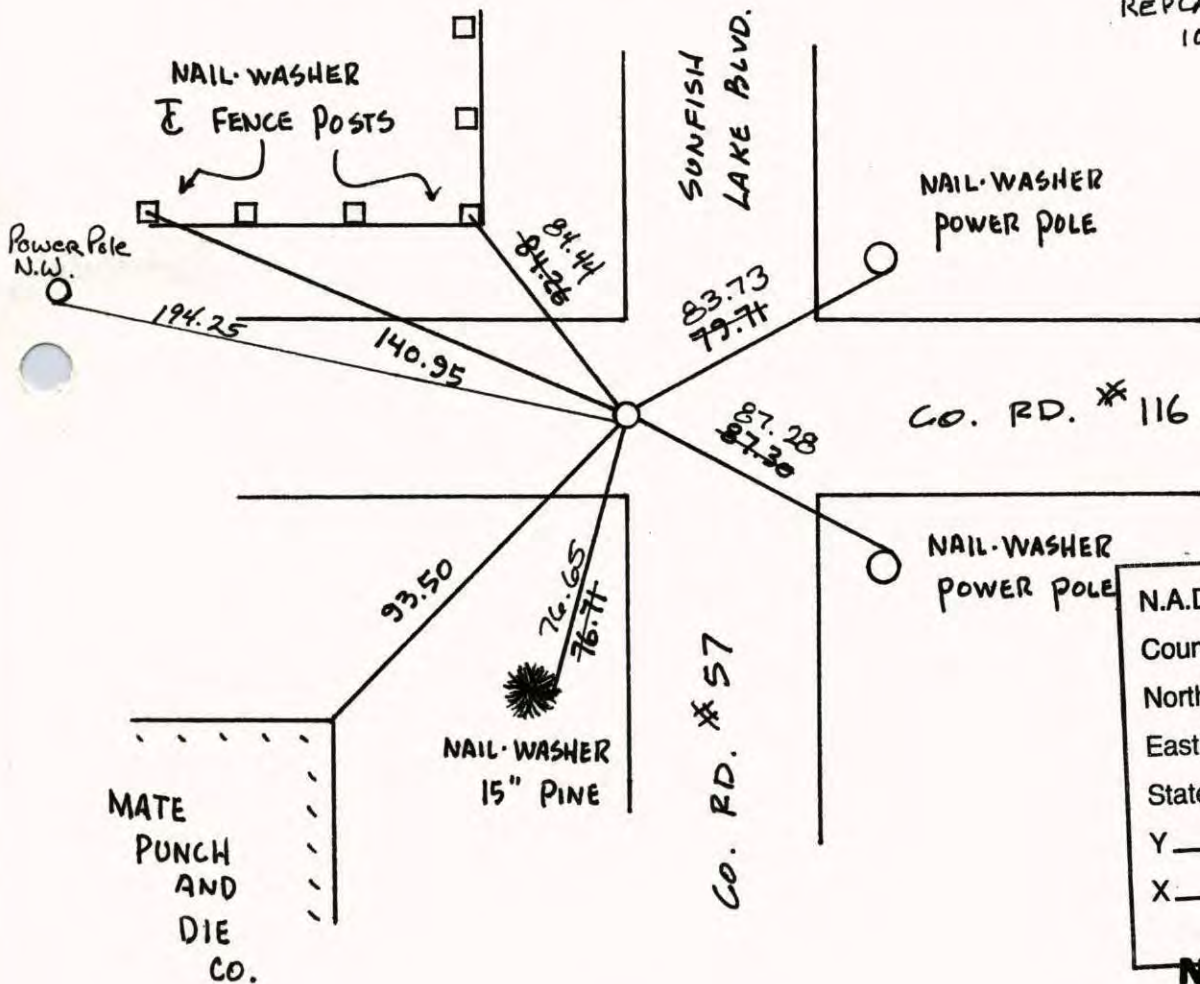
NORTHWEST Corner of Sec. 35 Township 32 Range 25

I hereby certify that on the 21ST day of APRIL, 1961, I found the described corner which was evidenced by CONCRETE MONUMENT

and I further certify that to perpetuate the location of said corner, I did, at the exact location thereof, place a permanent marker consisting of CAST IRON MONUMENT

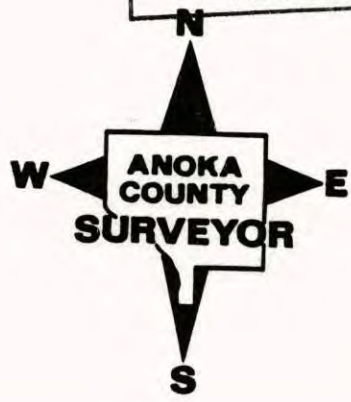
which reference or witness monuments are located in the manner following:

REMOVED FOR CONSTRUCTION
7-29-02
REPLACED
10-3-02



N.A.D.	1983	Co-ordinates
County	Project	Co-ordinates
Northing	169803.1345	
Easting	458063.2075	
State Plane Co-ordinates		
Y	_____	
X	_____	
Date	_____	

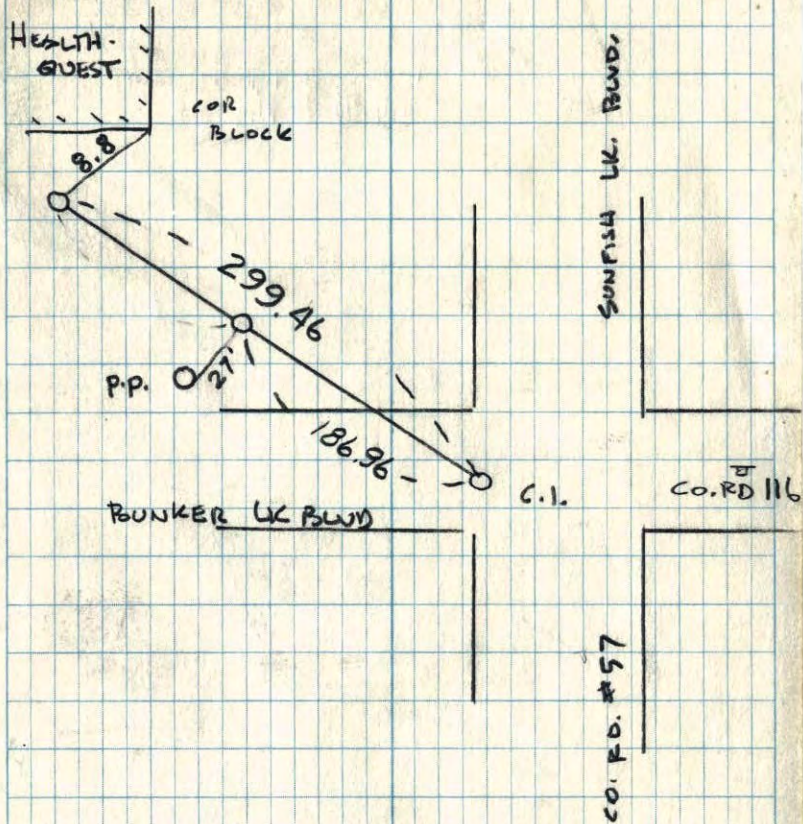
Revised date	Revised date	Revised date
8-23-82		
7-17-85		
6-16-88		
8-4-93		
8-30-99		
7-29-02		



TRANSIT TIE
 NORTHWEST COR. SEC 35 T 32 R 25

117

TIED & REMOVED CAST IRON
 FOR CONSTRUCTION



BUNKER LK BLVD

CO. RD. #57

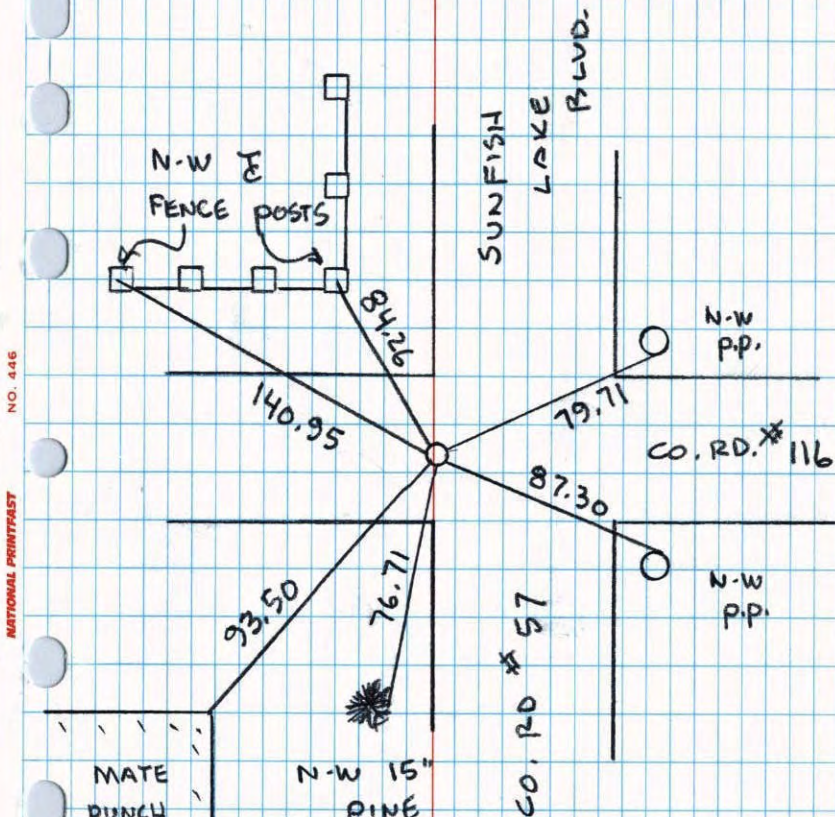
CO. RD #116

7-29-02
 J. SIMMER
 B. KLENZ

117

NORTHWEST COR. SEC 35 T 32 R 25

RETIRED CAST IRON MONUMENT



NATIONAL PRINTFAST
 NO. 445

MATE
 PUNCH
 AND
 DIE
 CO.

N-W 15"
 PINE

CO. RD #57

CO. RD. #116

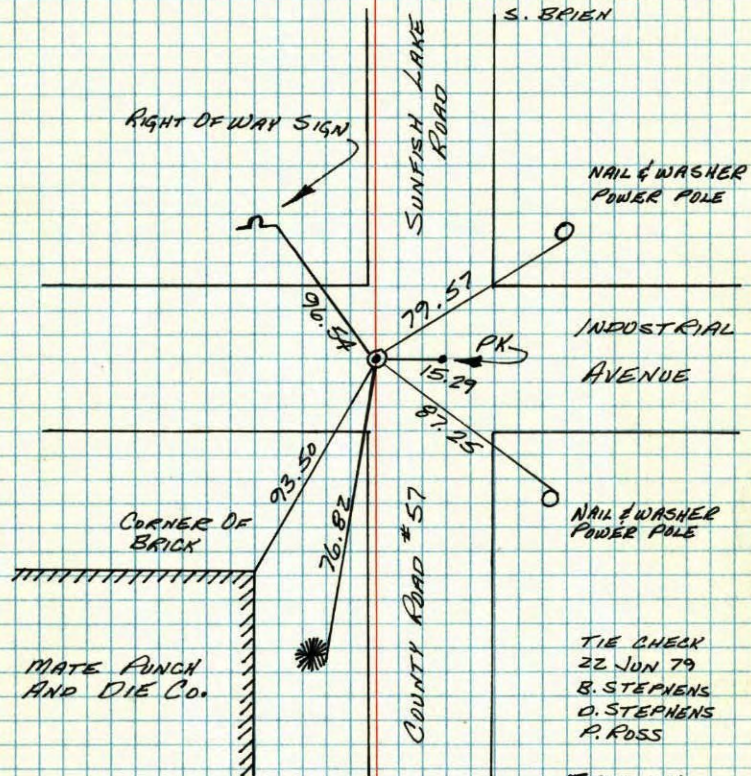
8-30-99

J. SIMMER
 R. SCHWAB.

N.W. CORNER SECTION 35-T32-R25

RESET CAST IRON MONUMENT FLUSH FROM CONSTRUCTION TIES.

7 JUN 76
G. ADAMS
B. SANNEPUD
S. BRIEN



TIE CHECK
22 JUN 79
B. STEPHENS
D. STEPHENS
P. ROSS

TIE CHECK
8-23-82
P. ROSS
P. HORNBY

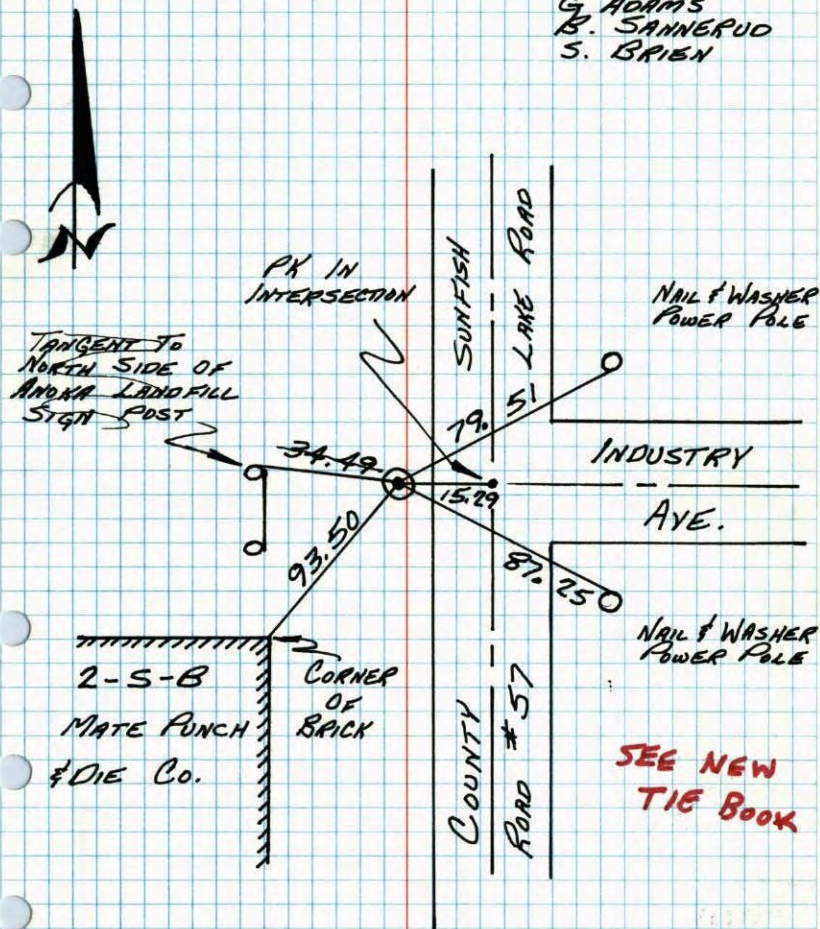
TEMPERATURE CORRECTED
AND HORIZONTALLY
TAPED MEASUREMENTS

ROLAND W. ANDERSON
COUNTY SURVEYOR
'ANOKA COUNTY, MINNESOTA'

N.W. COR. SEC 35-T32-R25

RESET CAST IRON MONUMENT DOWN 0.2'
FROM CONSTRUCTION TIES. NEW TIES.

7 JUN 76
G. ADAMS
B. SANNEPUD
S. BRIEN



TEMPERATURE CORRECTED
AND HORIZONTALLY
TAPED MEASUREMENTS

ROLAND W. ANDERSON
COUNTY SURVEYOR
'ANOKA COUNTY, MINNESOTA'

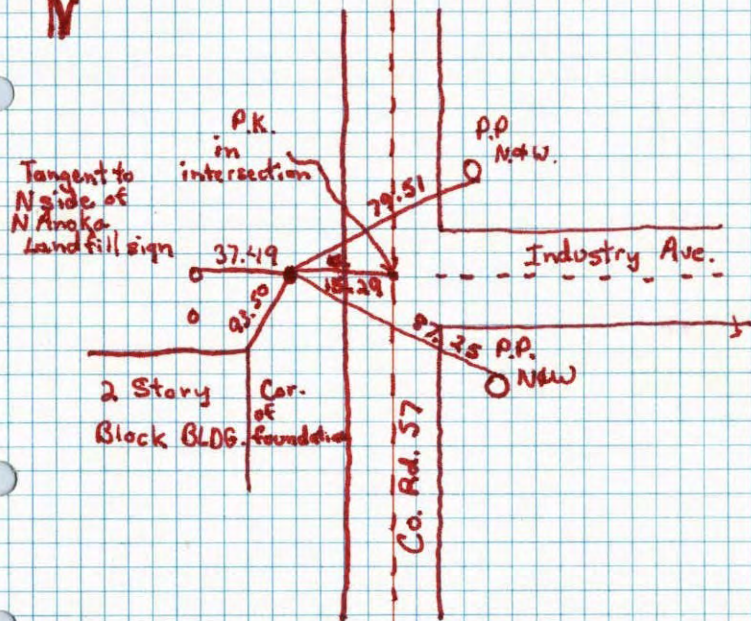
N.W. $\frac{1}{4}$ Cor. Sec. 35 - T32 - R25

Reset C.I. down 0.2' from
construction ties. New ties

June 7, 1976

G. Adams
B. Sannerud
S. Brien

T-74°

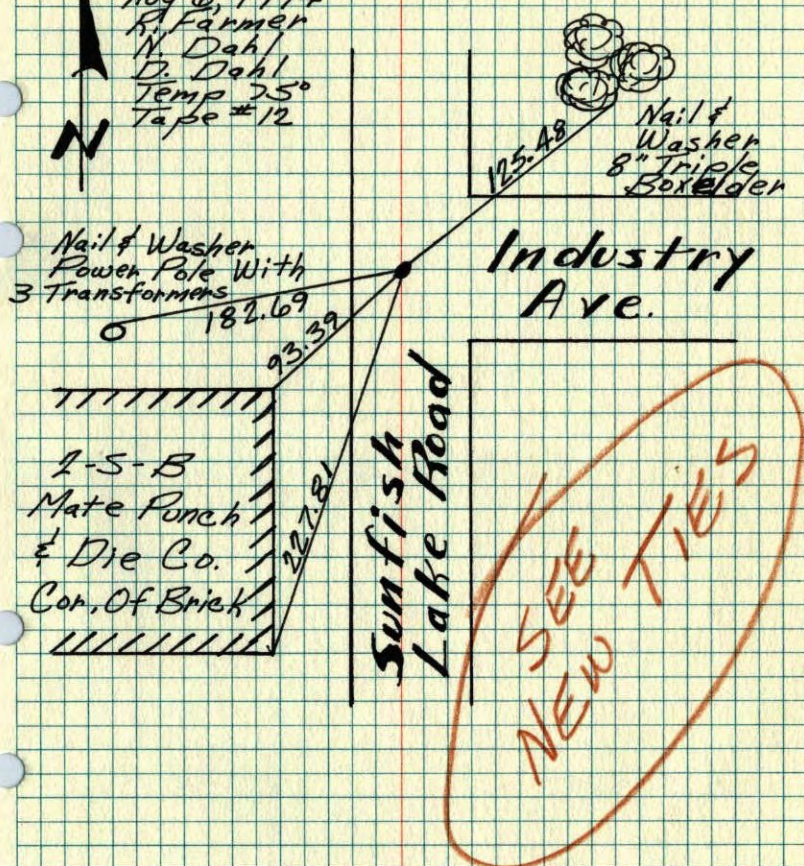


Construction Ties N.W.

Cor Sec 35-T32-R25

Cast Iron Flush.

Aug 6, 1974
R. Farmer
N. Dahl
D. Dahl
Temp 75°
Tape #12



TEMPERATURE CORRECTED ROLAND W. ANDERSON
AND HORIZONTALLY COUNTY SURVEYOR
TAPED MEASUREMENTS ANOKA COUNTY, MINNESOTA

Construction ties NW cor Sec 35

T32 R25

cast Iron flush

Aug 6, 1974

R Farmer

N Dahl

D Dahl

75° Tape '12

Sunfish Lake Rd

8" Triple
Boxelder

PP with 3 transformers
NEW

182.69
182.68

93.39

Industry Ave

2-S-B

Mate punch

& die Co.

cor. of Brick

227.80
227.81

125.48
125.47

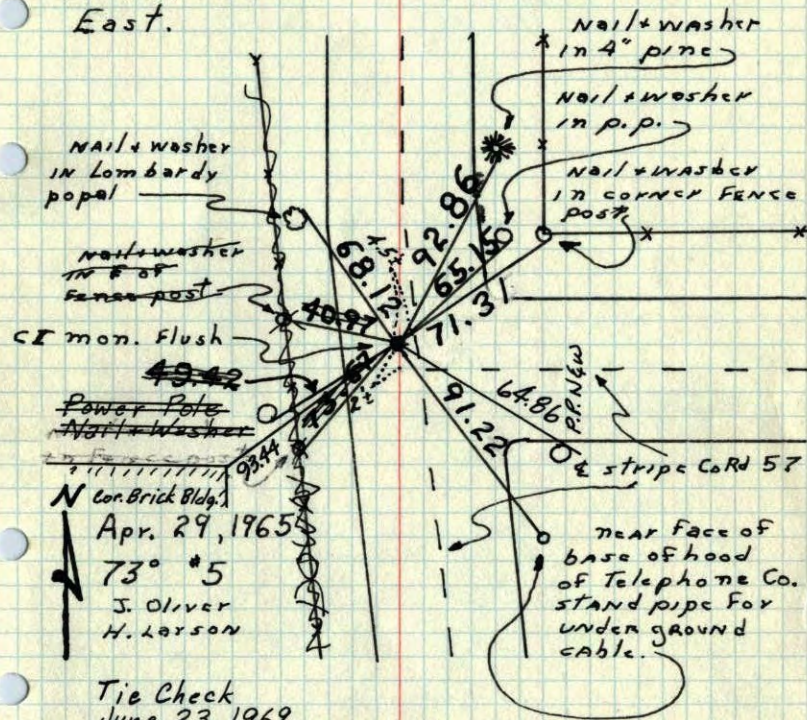
NW Cor. Sec. 35 T32 R25

Found concrete monument down 0.6'

Set top 0.6' of broken removable

top. Cast iron monument flush

with PK spks. set 2.00' North and
East.



Apr. 29, 1965

73° *5

J. Oliver
H. Larson

Tie Check

June 23, 1969

D. Powell
R. Olson
B. Olson

Tie Check
7/28/72
B. Olson
J. Boetcher
D. Brien

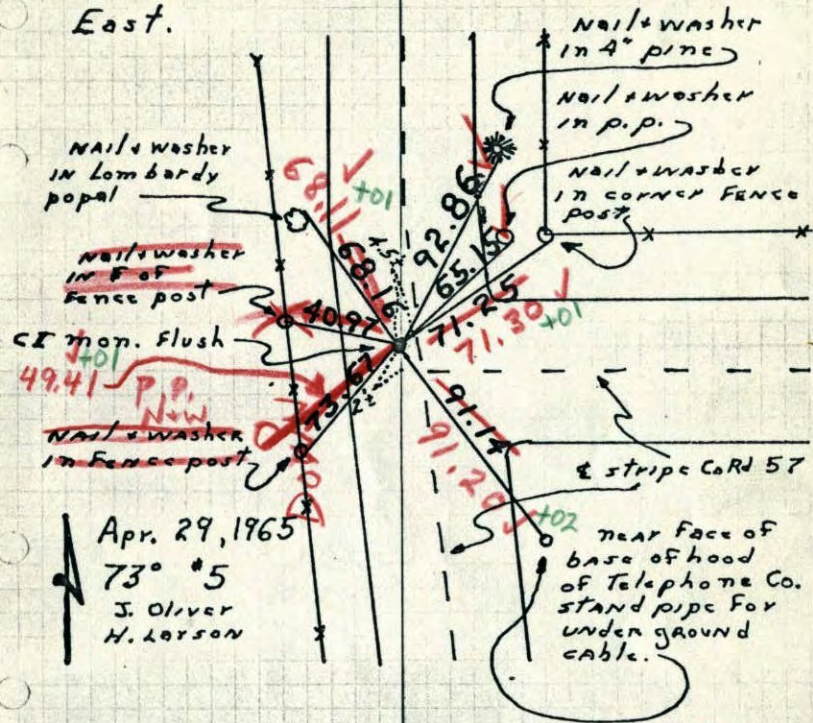
TEMPERATURE CORRECTED
AND HORIZONTALLY
TAPED MEASUREMENTS

ROLAND W. ANDERSON
COUNTY SURVEYOR
ANOKA COUNTY, MINNESOTA

X

NW Cor. Sec. 35 T32 R25

Found concrete monument down 0.6'
Set top 0.6' of broken removable
top, cast iron monument flush
with PK spks. set 2.00' North and
East.



Apr. 29, 1965

73° #5

J. Oliver
H. Larson

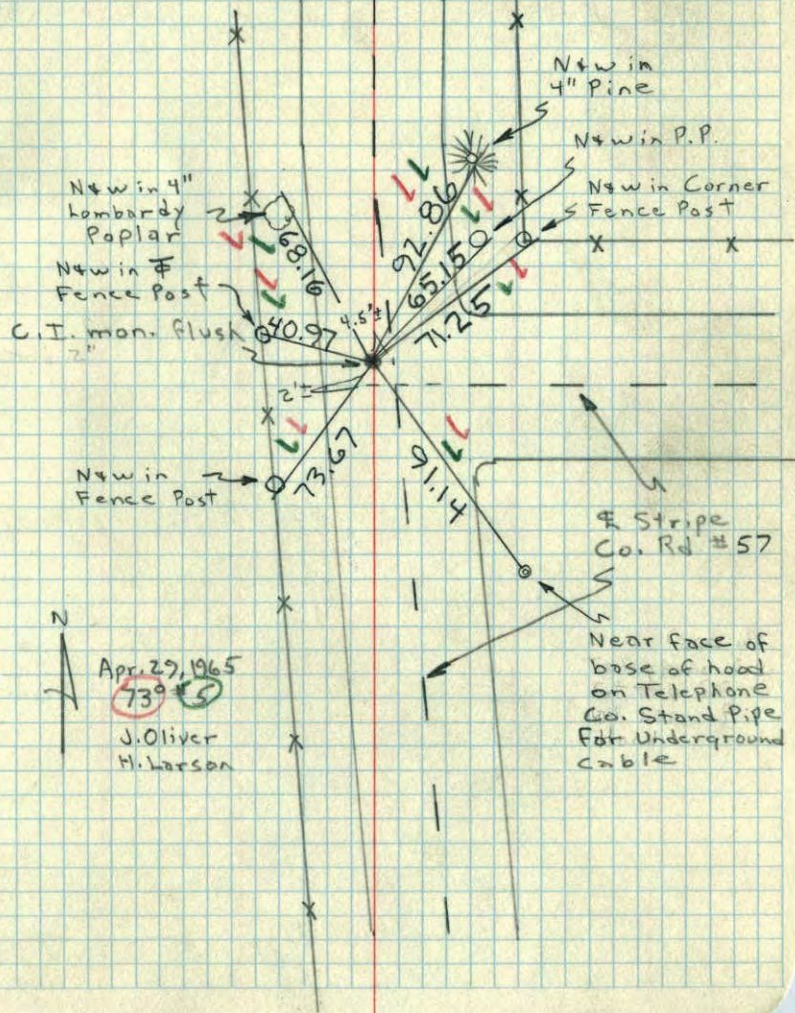
6/23/69
#4-68° ✓
D. Powell
R. Olson
B. Olson

TEMPERATURE CORRECTED
AND HORIZONTALLY
TAPED MEASUREMENTS

ROLAND W. ANDERSON
COUNTY SURVEYOR
ANOKA COUNTY, MINNESOTA

NW Cor. Sec. 35, T32, R25

Found Concrete Monument down 0.6'.
Set Top 0.6' of broken removable top
cast Iron monument flush with PK
Spks set 2.00' North and East.



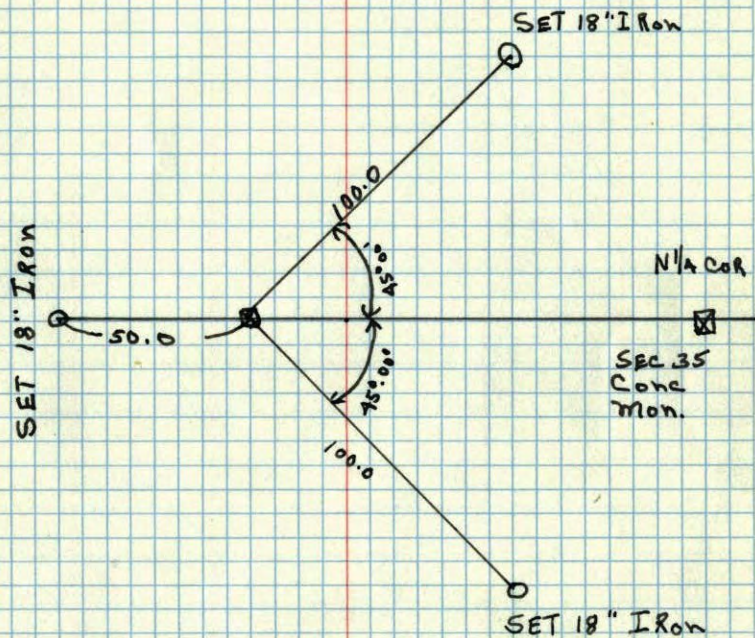
Apr. 29, 1965

73° #5

J. Oliver
H. Larson

Near face of
base of hood
on Telephone
Co. Stand Pipe
For Underground
Cable

NW Cor SEC 35-32-25 RAMSEY
SET REF IRONS BECAUSE OF HWY GRADE
OF ROAD. Found Conc. Mon down 0.8'
1/2" IRON ON E. FACE.

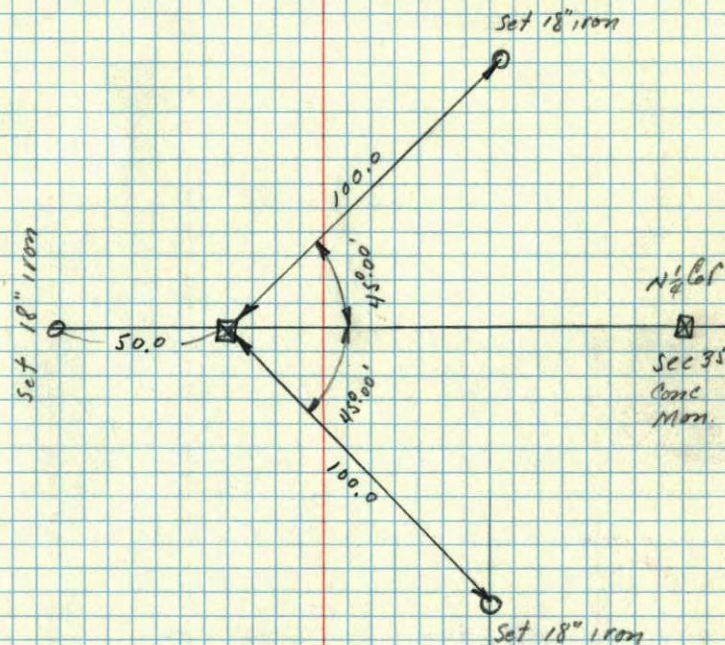


TEMPERATURE CORRECTED
AND HORIZONTALLY
TAPED MEASUREMENTS

4-21-61
FREEMAN-ANDERSON
TEMP CORR +68°

ROLAND W. ANDERSON
COUNTY SURVEYOR
ANOKA COUNTY, MINNESOTA

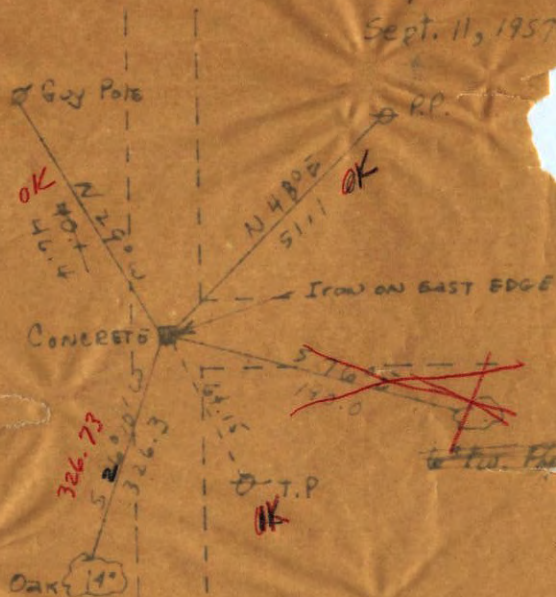
NW Cor Sec 35-32-25 Ramsey
Set Ref irons because of Hwy grade
of Road. Found Conc. Mon down 0.8'
1/2" iron on E. face.



Temp.

N.W. CORNER OF SEC. 35, T32, R15
CONC. MON. DOWN 1.0'

C & O
Sept. 11, 1957



HOLIUM

41.42
93

Sept 22, 1957
CARTWRIGHT