

CERTIFICATE OF LOCATION OF GOVERNMENT CORNER

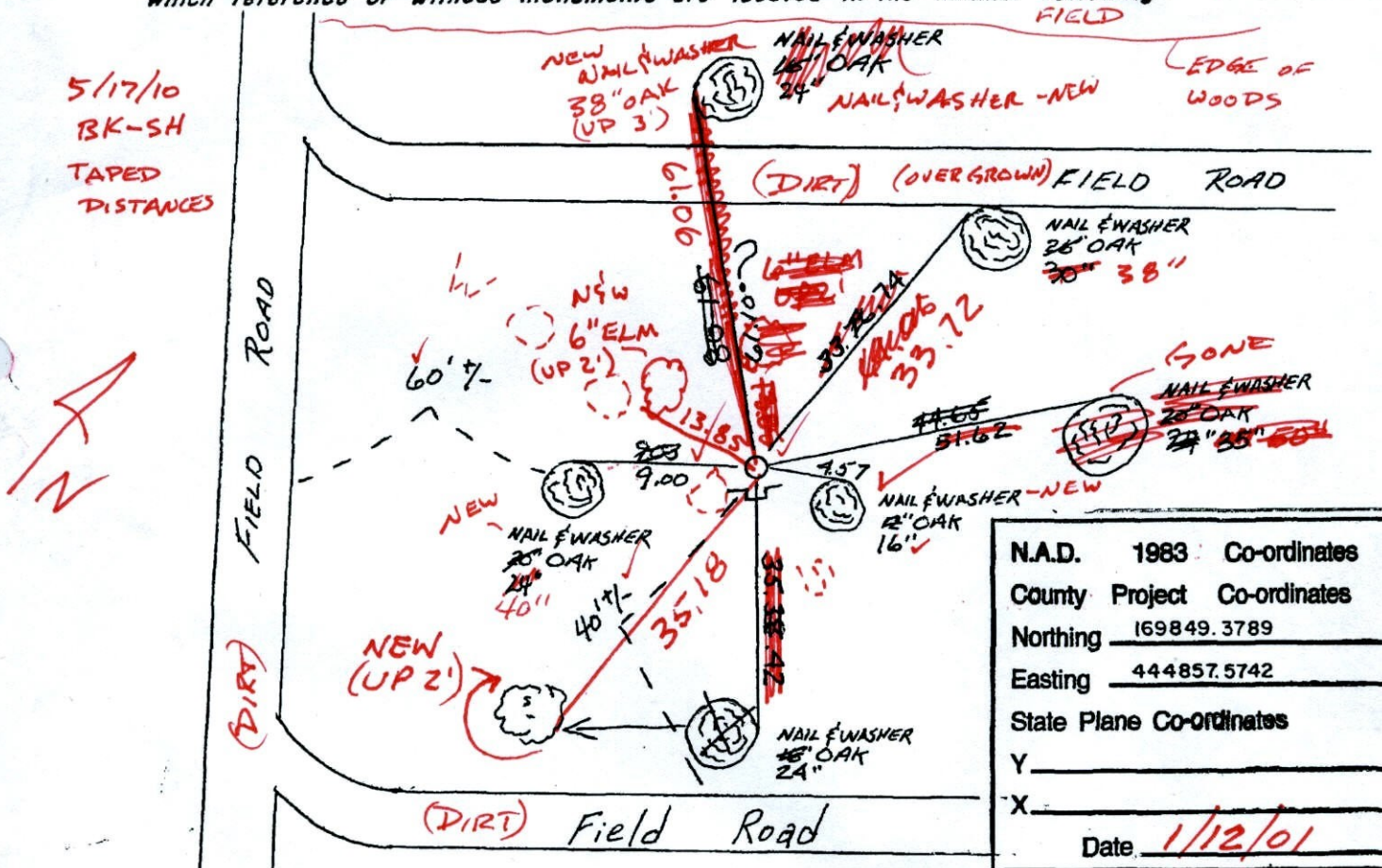
County of Anoka

State of Minnesota

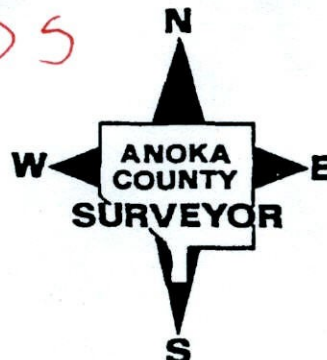
SOUTH 1/4 Corner of Sec. 29 Township 32 Range 25

I hereby certify that on the 17TH day of APRIL, 1962, I found the described corner which was evidenced by 4" SQUARE CONCRETE MONUMENT

and I further certify that to perpetuate the location of said corner, I did, at the exact location thereof, place a permanent marker consisting of 4" SQUARE CONCRETE MONUMENT; 3/4" IRON PIPE ON NORTH SIDE OF MONUMENT (FOR LOCATING) SIGN & POST ON SOUTH SIDE which reference or witness monuments are located in the manner following: (DOWN 0.3')



Revised date	Revised date	Revised date
4-19-62	1-12-01	
8-18-72		
7-8-76		
6-22-79		
8-16-82		
6-24-88		
8-20-93		



CERTIFICATE OF LOCATION OF GOVERNMENT CORNER

County of Anoka

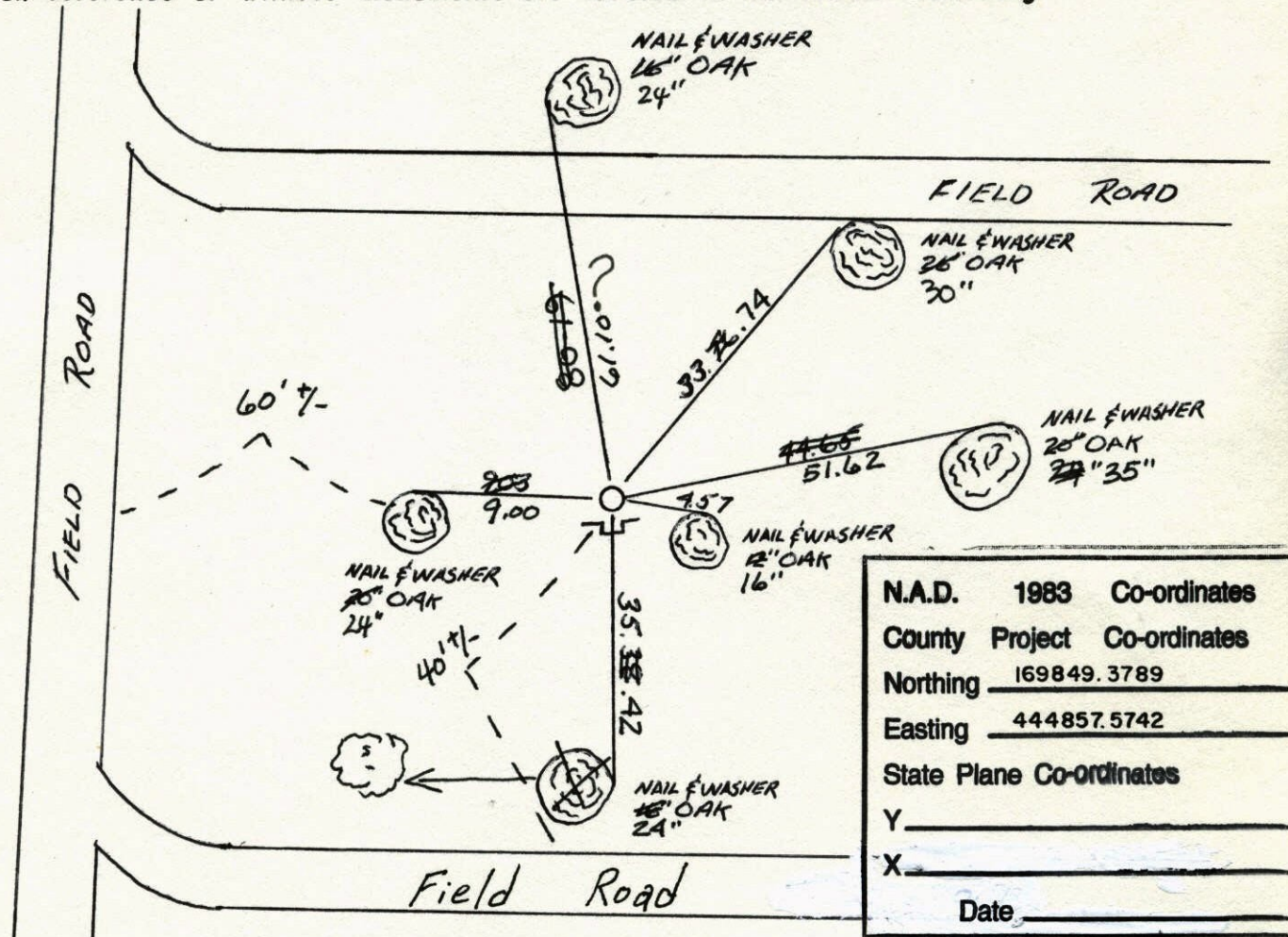
State of Minnesota

SOUTH 1/4 Corner of Sec. 29 Township 32 Range 25

I hereby certify that on the 19th day of April, 1962, I found the described corner which was evidenced by 4" SQUARE CONCRETE MONUMENT

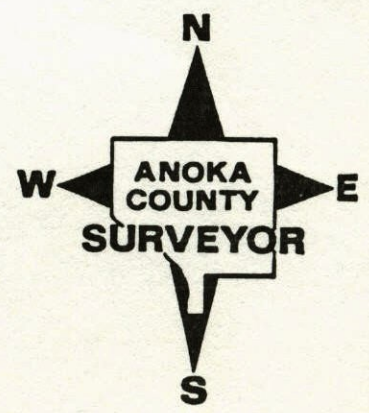
and I further certify that to perpetuate the location of said corner, I did, at the exact location thereof, place a permanent marker consisting of 4" SQUARE CONCRETE MONUMENT. 3/4" IRON PIPE ON NORTH SIDE OF MONUMENT (FOR LOCATING) SIGN & POST ON SOUTH SIDE

which reference or witness monuments are located in the manner following:



N.A.D.	1983	Co-ordinates
County	Project	Co-ordinates
Northing		169849.3789
Easting		444857.5742
State Plane Co-ordinates		
Y		_____
X		_____
Date _____		

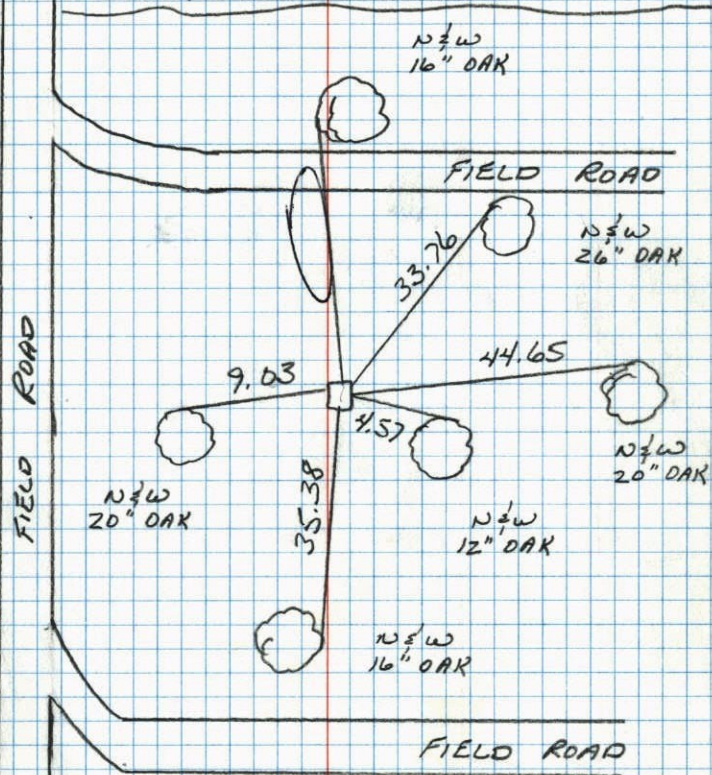
Revised date	Revised date	Revised date
4-19-62	1-12-01	
8-18-72		
7-8-76		
6-22-79		
8-16-82		
6-24-88		
8-20-93		



S¹/₄ CORNER SEC 29 T32 R25

RETIED CONCRETE MONUMENT.

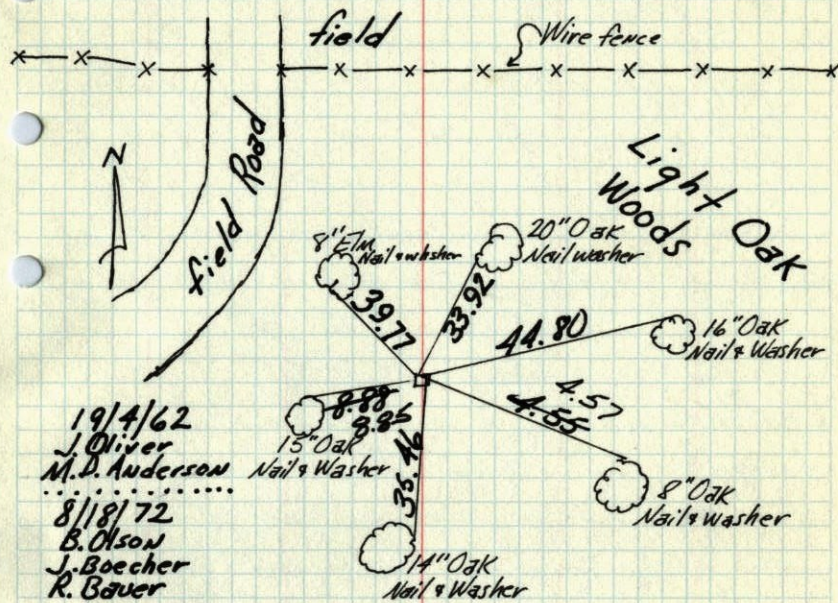
BERRY FARM FIELD



6-24-88
B. QUETZKO
J. STEVENSON
M. NALL-H
96° 200' TAPE

S¹/₄ Cor. Sec. 29-T32-R 25

found 4" sq. Concrete monument down 0.2'±
Set 3/4" Iron Pipe on North side



19/4/62
J. Oliver
M. D. Anderson

8/18/72
B. Olson
J. Boecher
R. Bauer

TIE CHECK
7-8-76
G. ADAMS
G. SANBERG
S. BRIEN

TIE CHECK
6-22-79
B. STEPHENS
D. STEPHENS
P. ROSS

TIE CHECK
8-16-82
P. ROSS
P. HORNBY

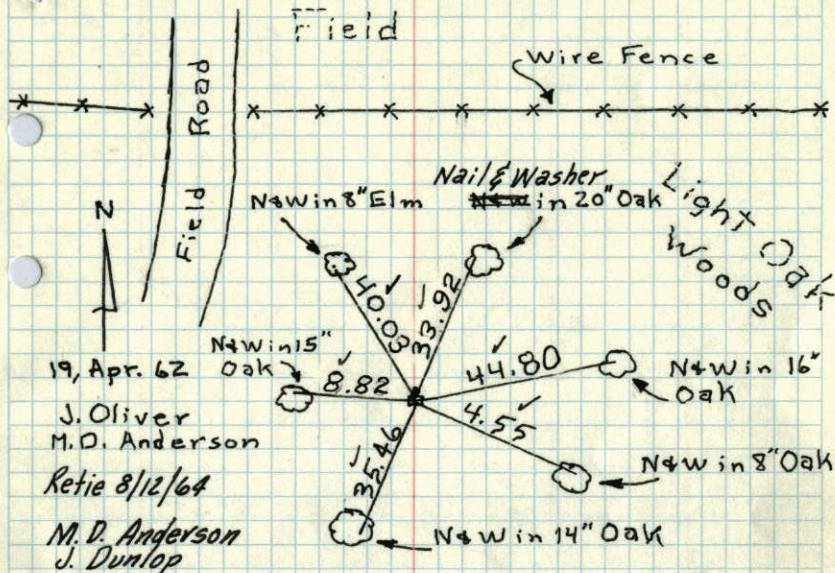
TEMPERATURE CORRECTED
AND HORIZONTALLY
TAPED MEASUREMENTS

ROLAND W. ANDERSON
COUNTY SURVEYOR
ANOKA COUNTY, MINNESOTA

S 1/4 Cor. Sec. 29, T32, R25

Found 4" Sq. Conca. Mon. Flush down 0.2'±

Set 3/4" I. P. on No. Side



Tie Check
June 20, 1969
D. Powell
R. Olson
B. Olson

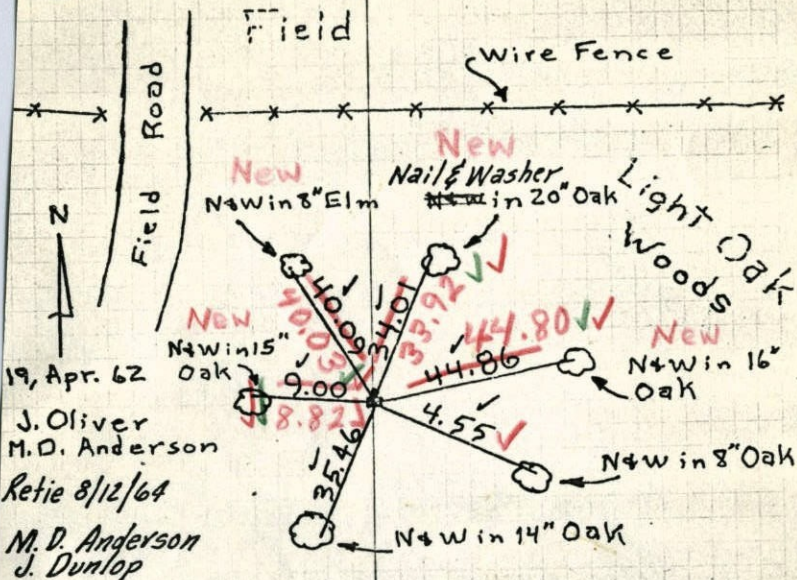
TEMPERATURE CORRECTED
AND HORIZONTALLY
TAPED MEASUREMENTS

ROLAND W. ANDERSON
COUNTY SURVEYOR
ANOKA COUNTY, MINNESOTA

S 1/4 Cor. Sec. 29, T32, R25

Found 4" Sq. Conca. Mon. Flush down 0.2'±

Set 3/4" I. P. on No. Side



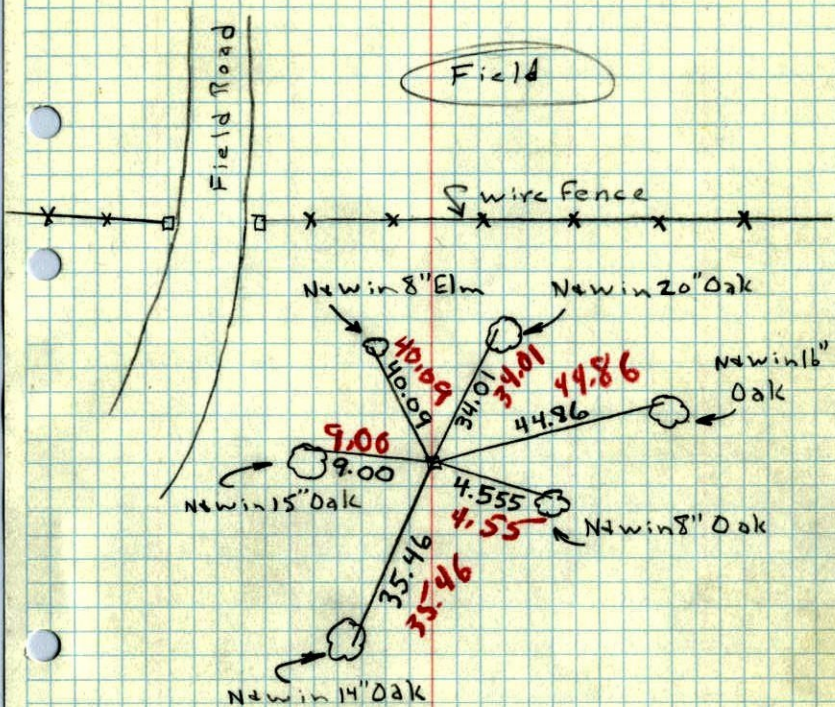
TEMPERATURE CORRECTED
AND HORIZONTALLY
TAPED MEASUREMENTS

ROLAND W. ANDERSON
COUNTY SURVEYOR
ANOKA COUNTY, MINNESOTA

S 1/4 Cor. Sec. 29, T32, R25

Found 4" Sq. Conc. Mon. Flush

Set 3/4" I. P. on Nor. Side



19, Apr. 62

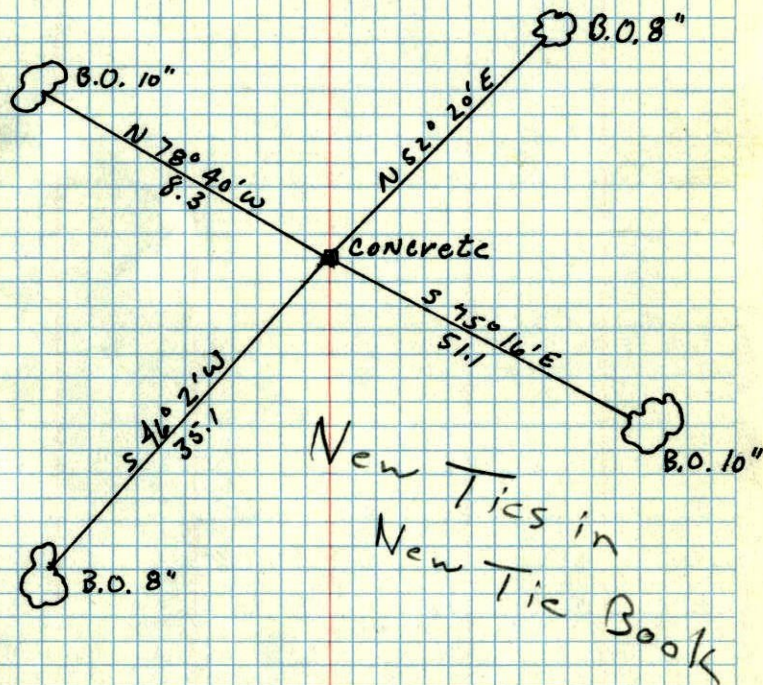
59°
J. Oliver
M. D. Anderson

Light Oak Woods

44 ✓

S 1/4 CORNER OF SEC. 29, T32, R25

CONC. MON. FLUSH



Sept 14, 1943
CARTWRIGHT