

CERTIFICATE OF LOCATION OF GOVERNMENT CORNER

County of Anoka

State of Minnesota

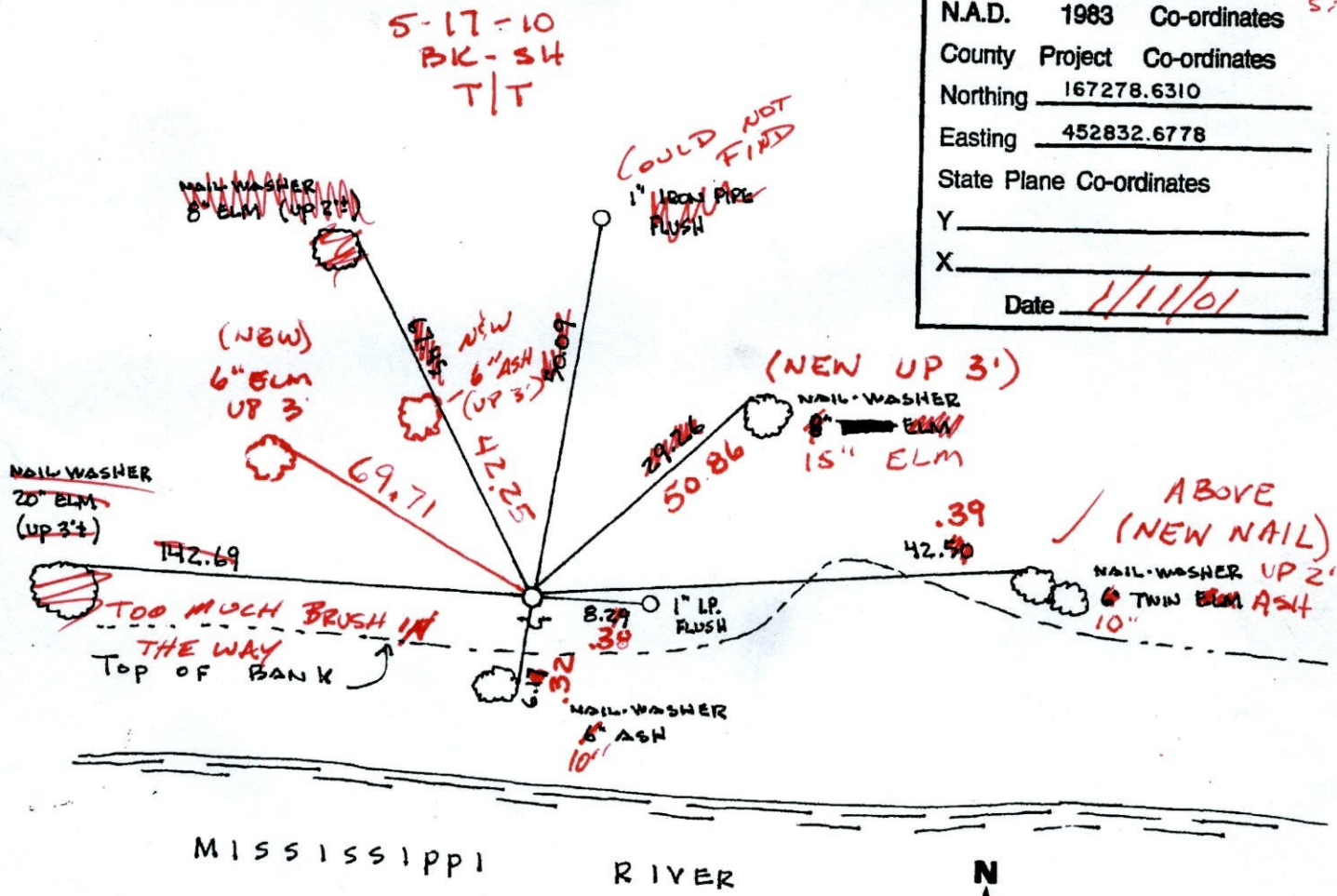
WITNESS Corner of Sec. 34 Township 32 Range 25
ON WEST LINE

I hereby certify that on the 16TH day of APRIL, 1962, I found the described corner which was evidenced by 4" x 4" CONCRETE MONUMENT

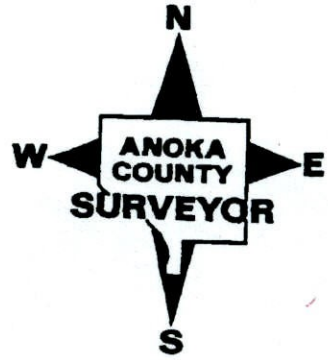
and I further certify that to perpetuate the location of said corner, I did, at the exact location thereof, place a permanent marker consisting of 4" x 4" CONCRETE MONUMENT WITH 1" IRON PIPE ON NORTH SIDE AND SIGN AND POST ON SOUTH SIDE ~~SIGN AND POST~~ SIGN & POST ON SOUTH SIDE

which reference or witness monuments are located in the manner following:

N.A.D.	1983	Co-ordinates
County	Project	Co-ordinates
Northing		<u>167278.6310</u>
Easting		<u>452832.6778</u>
State Plane Co-ordinates		
Y _____		
X _____		
Date <u>1/11/01</u>		



Revised date	Revised date	Revised date
<u>7-5-79</u>		
<u>8-17-82</u>		
<u>7-29-85</u>		
<u>6-28-88</u>		
<u>8-20-93</u>		
<u>4-25-95</u>		
<u>1-11-01</u>		



CERTIFICATE OF LOCATION OF GOVERNMENT CORNER

County of Anoka

State of Minnesota

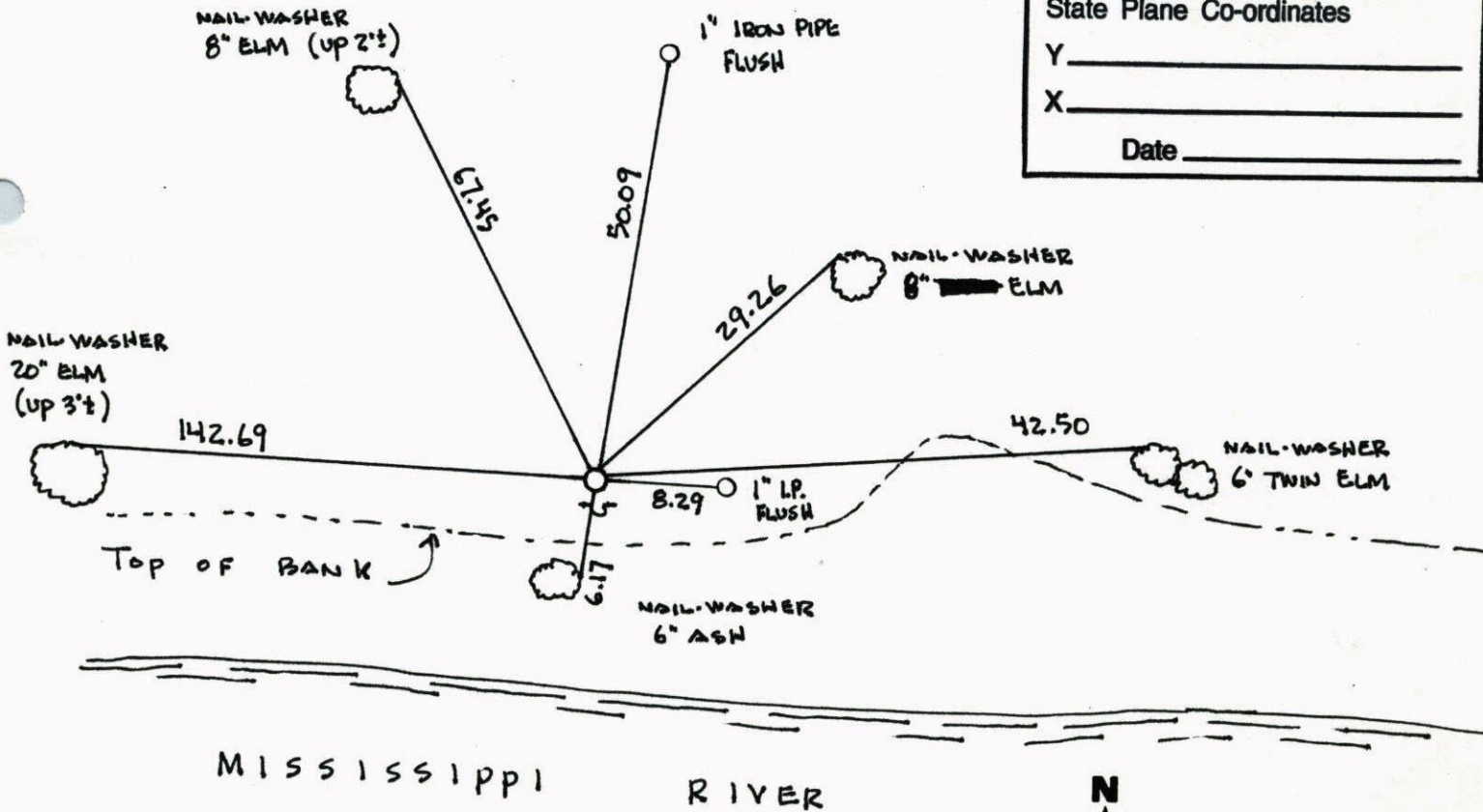
WITNESS Corner of Sec. 34 Township 32 Range 25
ON WEST LINE

I hereby certify that on the 16TH day of APRIL, 1962, I found the described corner which was evidenced by 4" x 4" CONCRETE MONUMENT

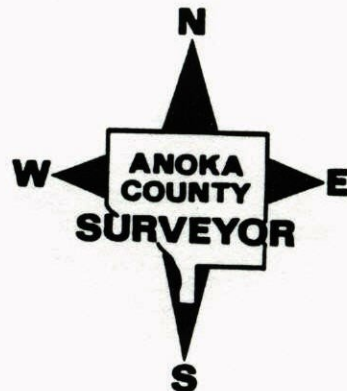
and I further certify that to perpetuate the location of said corner, I did, at the exact location thereof, place a permanent marker consisting of 4" x 4" CONCRETE MONUMENT WITH 1" IRON PIPE ON NORTH SIDE AND SIGN AND POST ON SOUTH SIDE

which reference or witness monuments are located in the manner following:

N.A.D.	1983	Co-ordinates
County	Project	Co-ordinates
Northing	<u>167278.6310</u>	
Easting	<u>452832.6778</u>	
State Plane Co-ordinates		
Y	_____	
X	_____	
Date _____		

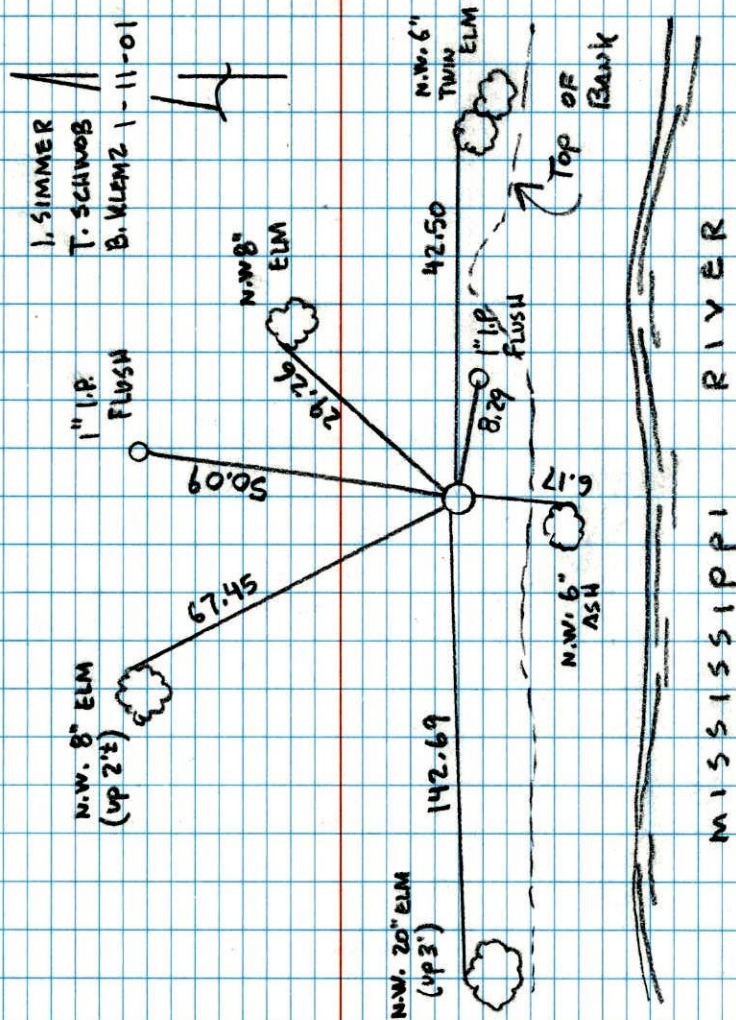


Revised date	Revised date	Revised date
<u>7-5-79</u>		
<u>8-17-82</u>		
<u>7-29-85</u>		
<u>6-28-88</u>		
<u>8-20-93</u>		
<u>4-25-95</u>		
<u>1-11-01</u>		



WITNESS COR SEC 34 T32 R25
ON WEST LINE RETIED AND GPS.

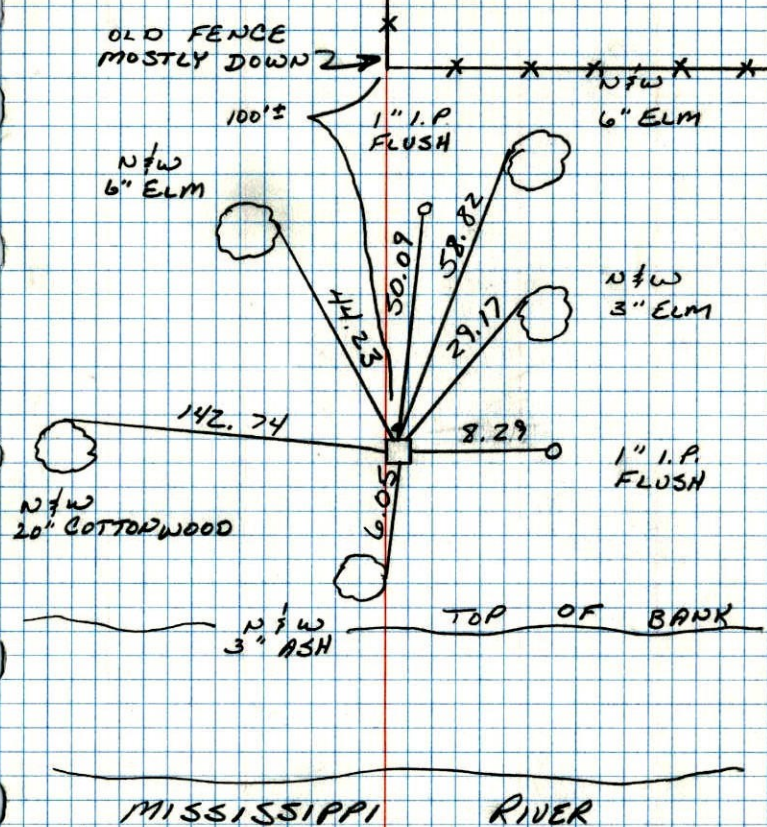
4" X 4" CONCRETE MON W/ 1" IRON ON
N. SIDE AND SIGN & POST ON S. SIDE



Witness ~~West~~ East line 25
HEADER CORNER SEC. 34 T32 R25

RETICO CONCRETE MONUMENT.

1" IRON PIPE UP 2'± ON NORTH SIDE

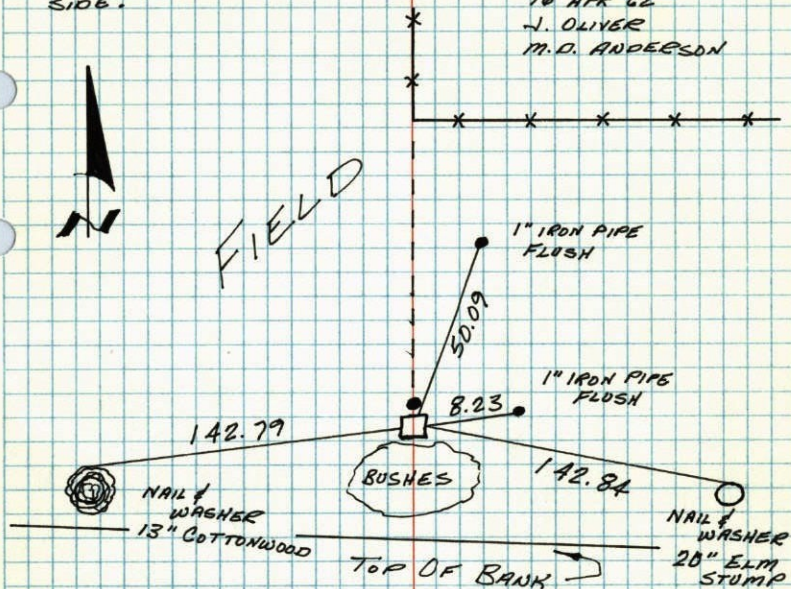


6-28-88
B. GUETZKO
M. JALI-H
80' 200' TAPE

MEANDER CORNER ON WEST LINE OF SECTION 34 - T32 - R25

FOUND 4" SQUARE CONCRETE MONUMENT FLUSH - SET 1" IRON PIPE, PAINTED YELLOW, WITH TOP UP 2' ON NORTH SIDE.

16 APR 62
J. OLIVER
M.D. ANDERSON



TIE CHECK
5 JUL 79
B. STEPHENS
D. STEPHENS
P. ROSS

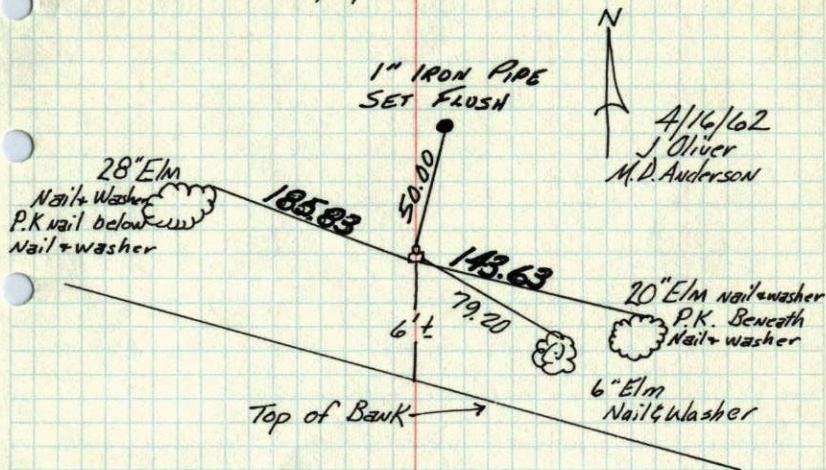
TIE CHECK
8-17-82
P. ROSS
P. HORNBY

TEMPERATURE CORRECTED
AND HORIZONTALLY
TAPED MEASUREMENTS

ROLAND W. ANDERSON
COUNTY SURVEYOR
ANOKA COUNTY, MINNESOTA

M.C. ON W. Line of Sec. 34 - T32 - R25

found 4" sq. Concrete Monument flush - set 1" I.P.
Painted Yellow with top up 2' on North side



4/16/62
J. OLIVER
M.D. ANDERSON

tie check
6/30/69
R.A. OLSON
B. OLSON
Retie 8/12/64
M.D. ANDERSON
J. DOWLOP
Retie 8/22/72
Bill OLSON
R. BAUER
J. BOEHER
TIE CHECK
7-8-76
G. ADAMS
B. SANDERSON
S. BRIEN

SEE
NEW
TIE
BOOK

TEMPERATURE CORRECTED
AND HORIZONTALLY
TAPED MEASUREMENTS

ROLAND W. ANDERSON
COUNTY SURVEYOR
ANOKA COUNTY, MINNESOTA

124

M.C. on W. line of Sec. 34, T32, R25

Found 4" Sq. Concrete Mon. Flush - Set 1" I.P.

~~Painted red with Top up 2' on No. Side~~

N



16, Apr. 62

J. Oliver
M.D. Anderson

{ nail & washer }
PK's gone

N+Win 28" Elm
PK Spk. beneath
N+W.

IP gone

N+W in 20" Elm
PK Spk. beneath
Nail & Washer

185.83 ±

143.31 ±

± 2'

Top of Bank
Mississippi River

Tie Check
June 30, 1969
R.A. Olson
B. Olson

Retie 8/12/64

M.D. Anderson
J. Dunlop

ROLAND W. ANDERSON COUNTY SURVEYOR
ANOKA COUNTY, MINNESOTA

TEMPERATURE CORRECTED
AND HORIZONTALLY
TAPED MEASUREMENTS

49

M.C. on W. line Sec. 34, T32, R25

Found 4" Sq. Conc. Mon. Flush - Set 1" I.P.

Painted red with Top up 2' on No. Side



16, Apr. 62

50

J. Oliver
M.D. Anderson

185.83

185.85

143.31

143.33

± 6'
Top of Bank

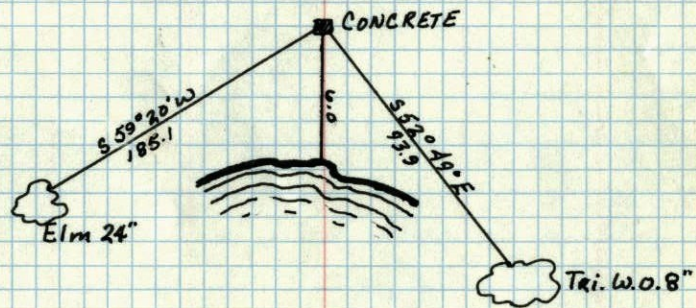
N+W in 28" Elm
PK Spk beneath
N+W

Mississippi River

N+W in 20" Elm
PK Spk beneath
N+W

M.C. CORNER OF W. Line Sec 31, T32, R25
CONC. MON.

New Tics in New
Tic Book



MAY 10, 1944
CARTWRIGHT