

CERTIFICATE OF LOCATION OF GOVERNMENT CORNER

County of Anoka

State of Minnesota

1/16TH CORNER ON THE Corner of Sec. 36 Township 32 Range 25
SOUTH 1/2 OF THE EAST LINE

I hereby certify that on the 18 day of APRIL, 1963, I found the described corner which was evidenced by IRON PIPE SET BY N. C. HOLM

and I further certify that to perpetuate the location of said corner, I did, at the exact location thereof, place a permanent marker consisting of CAST IRON MONUMENT WITH SIGN AND POST ON THE SOUTH SIDE

which reference or witness monuments are located in the manner following:

4/06/10
BK-SH
T-T

COULD NOT FIND CORNER

TOP CENTER HYDRANT

BAILEY LANE

MON'T GONE - SEEMS TO HAVE BEEN REMOVED WHEN FENCE WAS INSTALLED

NAIL & WASHER
12" ELM
(DEAD)

MCKINLEY ST. N.W.

N.A.D.	1983	Co-ordinates
County	Project	Co-ordinates
Northing		165905.1234
Easting		468550.4946
State Plane Co-ordinates		
Y		
X		
Date	12/17/99	

TIES THAT HAVE "CHECKS" PUT MON. IN A 5" CIRCLE.

NAIL & WASHER POWER POLE LIGHT

1.6±

57.41

42.43

69.70

~~38.88~~
~~40.85~~
~~41.02~~

24'±

40.40

NAIL & WASHER TO ELM

NAIL & WASHER POWER POLE

NAIL & WASHER 3" PIPE 10"

NAIL & WASHER 3" ELM 10"

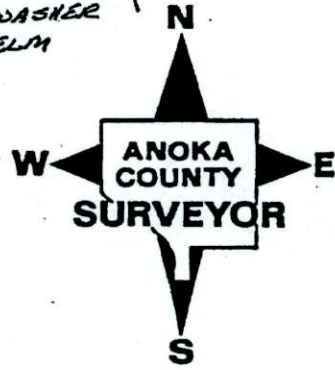
CYCLOPE FENCE

ANOKA CO. PROPERTY

COUNTY ~~SURVEYOR~~ PARKS STORAGE BUILDING

Revised date Revised date Revised date

7-23-85		
6-29-88		
8-6-93		
12-17-99		



CERTIFICATE OF LOCATION OF GOVERNMENT CORNER

County of Anoka

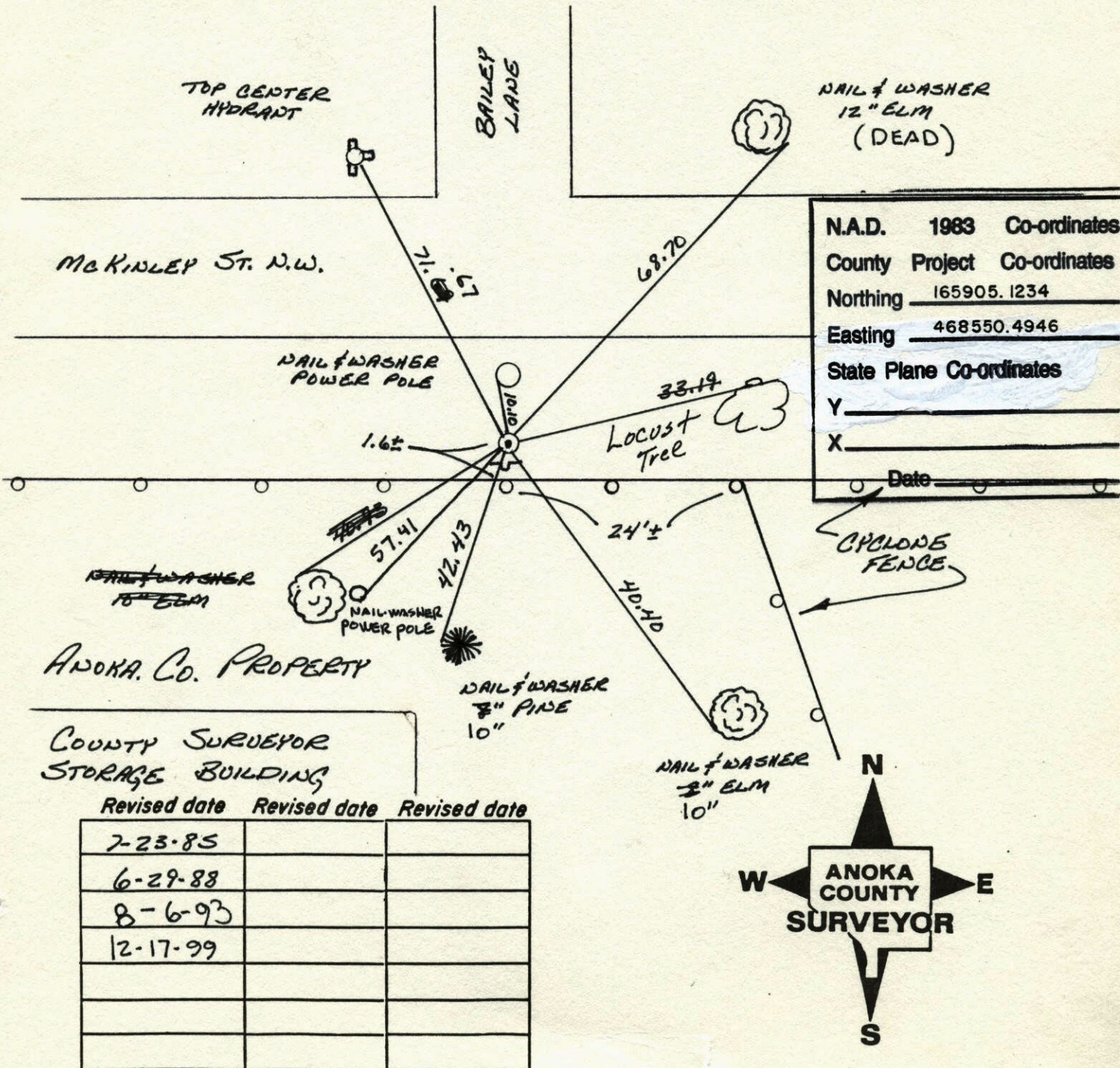
State of Minnesota

1/16TH CORNER ON THE Corner of Sec. 36 Township 32 Range 25
SOUTH 1/2 OF THE EAST LINE

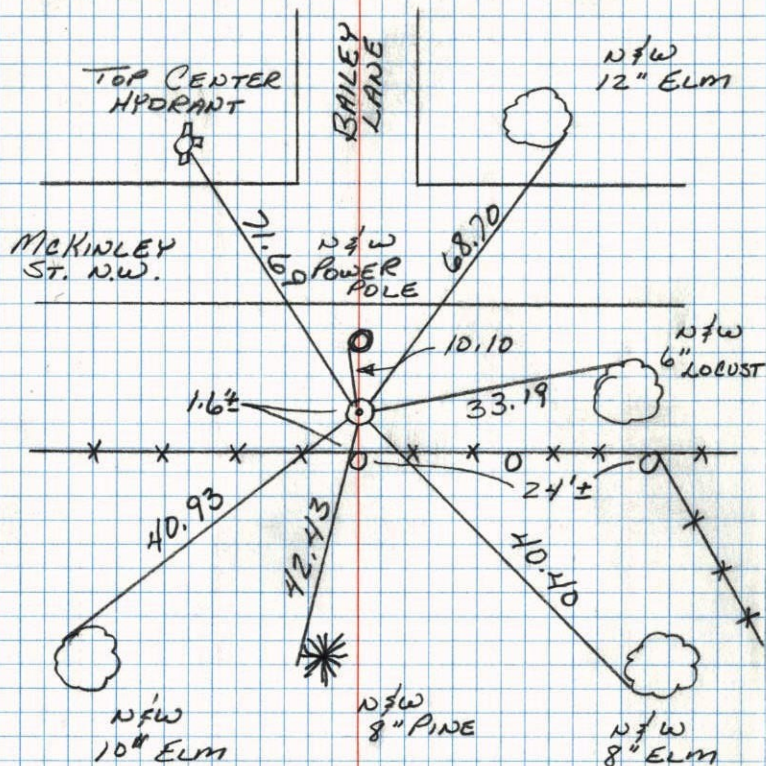
I hereby certify that on the 18 day of APRIL, 1963, I found the described corner which was evidenced by IRON PIPE SET BY N. C. HOIUM

and I further certify that to perpetuate the location of said corner, I did, at the exact location thereof, place a permanent marker consisting of CAST IRON MONUMENT WITH SIGN AND POST ON THE SOUTH SIDE

which reference or witness monuments are located in the manner following:



1/16TH CORNER ON THE SOUTH 1/2 OF THE EAST LINE OF SEC 36 T32 R25
RETIRED CAST IRON MONUMENT



ANOKA Co. PROPERTY

COUNTY SURVEYOR STORAGE BUILDING

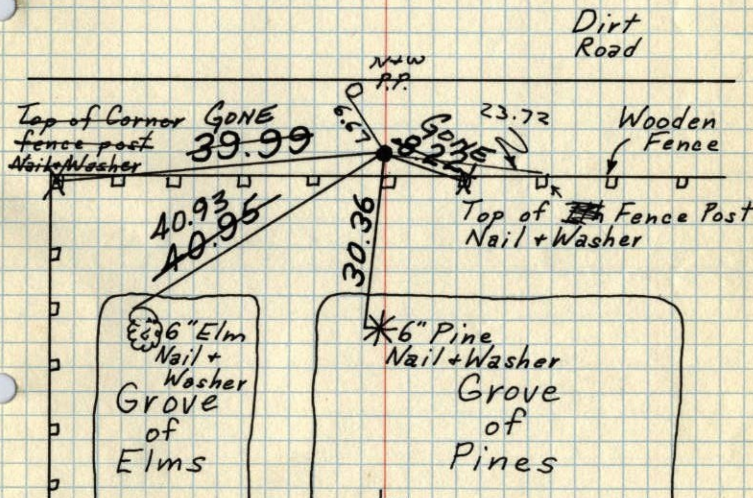
6-29-88
B. GUETZKO
M. WALI-H
70° 200' TAPE

1/16TH Cor. on S 1/2 of East Line of Sec. 36-T32-R25

Replaced Iron Pipe set by N.C. Hoium with Cast Iron Monument flush.
Steel fence post on West side up 3'±.

Tie Check
June 27, 1969
D. Powell
R. Olson
B. Olson

April 18, 1963
J. Oliver
M.D. Anderson



TIE CHECK
7-9-76
G. ADAMS
B. SANBERG
S. BRIEN

TIE CHECK
6-27-79
B. STEPHENS
D. STEPHENS
P. ROSS

Tie Check
8/2/76
B. Olson
J. Boetcher
R. Bauer

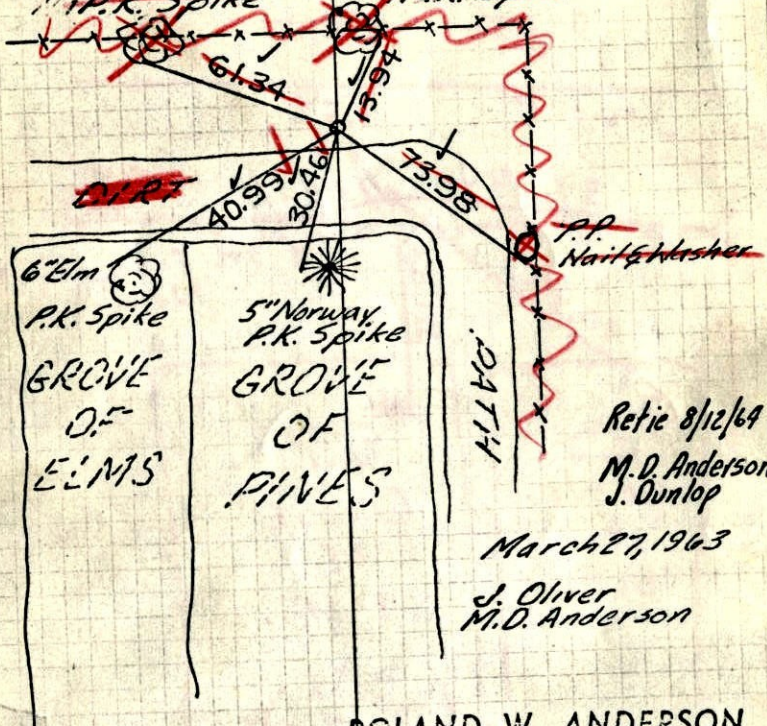
TEMPERATURE CORRECTED AND HORIZONTALLY TAPED MEASUREMENTS

ROLAND W. ANDERSON
COUNTY SURVEYOR
ANOKA COUNTY, MINNESOTA

94
1/16 Cor. on S 1/2 of E. line of
Sec. 36-32-25

see
back

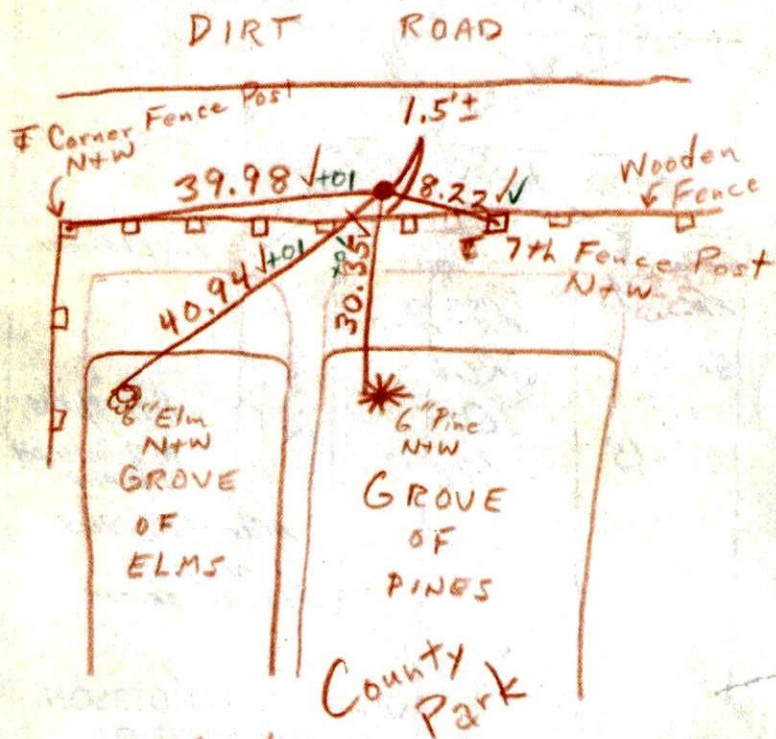
1/2" iron pipe set by N.C. Hoium and
checked this office.
Replaced with C.I. Mon. 18 April 63
28" Boxelder P.K. Spike
24" Boxelder P.K. Spike



ROLAND W. ANDERSON
COUNTY SURVEYOR
ANOKA COUNTY, MINNESOTA

TEMPERATURE CORRECTED
AND HORIZONTALLY
TAPED MEASUREMENTS

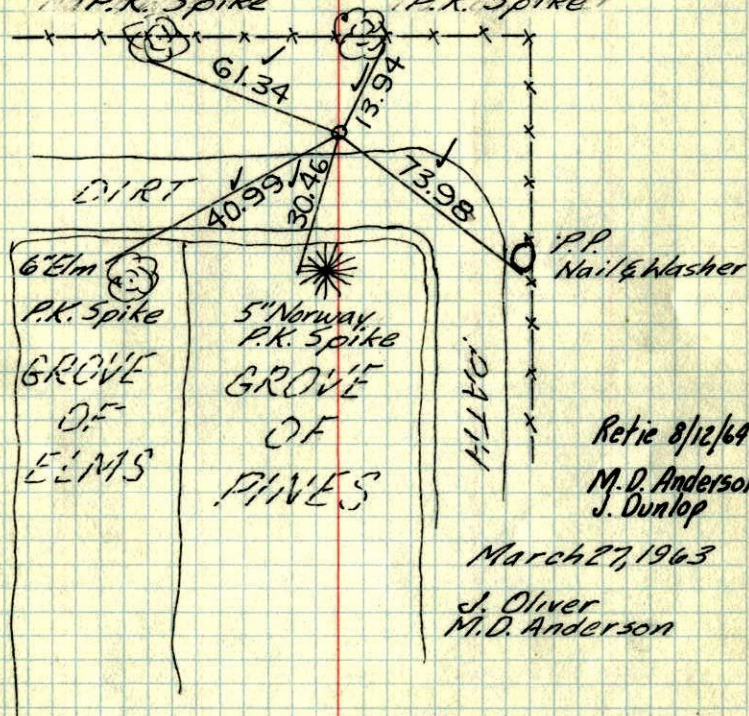
1/16 Cor. on S 1/2 of East Line of Sec. 36 -
C.I. Mon. Flush
Fence post on
W. side up 3 1/2
T32-R25



6/27/69
#4-680J
D. Powell II
R. Olson
B. Olson

$\frac{1}{16}$ Cor. on $S\frac{1}{2}$ of E. line of
Sec. 36-32-25

$\frac{1}{2}$ " iron pipe set by N. C. Hoium and
checked this office.
Replaced with C.I. Mon. 18 April 63
28" Boxelder P.K. Spike 24" Boxelder P.K. Spike



Retie 8/12/69
M. D. Anderson
J. Dunlop

March 27, 1963

J. Oliver
M. D. Anderson

ROLAND W. ANDERSON
COUNTY SURVEYOR
ANOKA COUNTY, MINNESOTA

TEMPERATURE CORRECTED
AND HORIZONTALLY
TAPED MEASUREMENTS