

CERTIFICATE OF LOCATION OF GOVERNMENT CORNER

County of Anoka

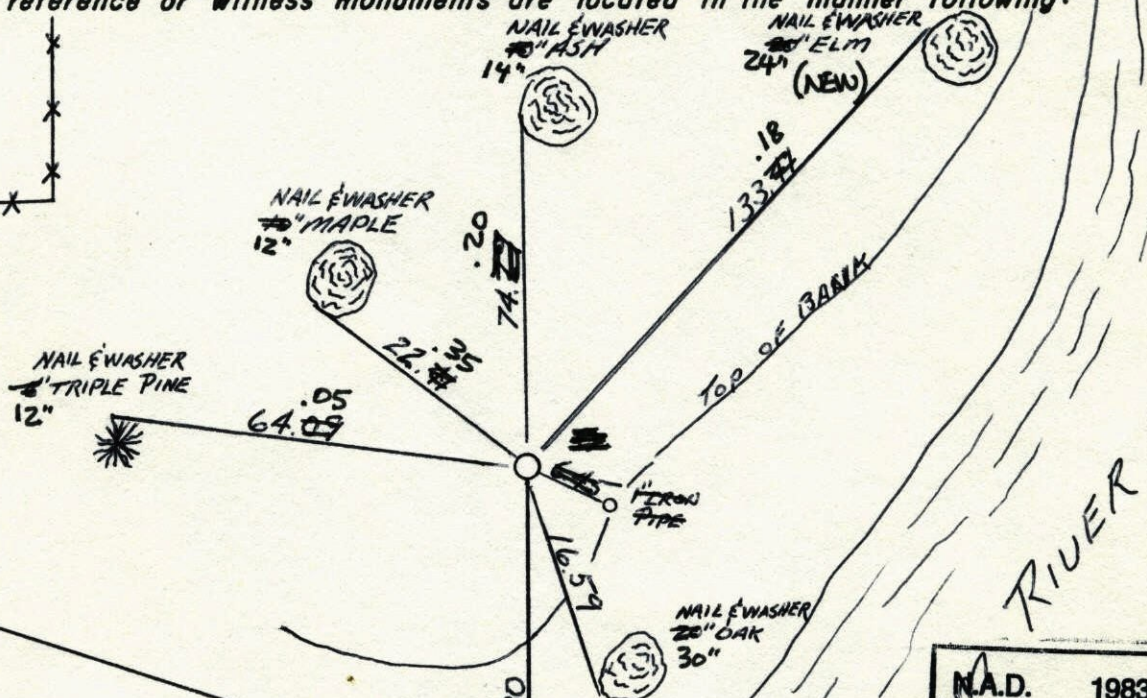
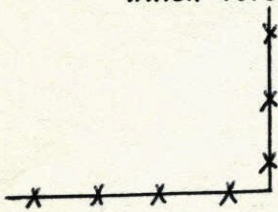
State of Minnesota

WITNESS CORNER TO MEANDER #3 ON EAST LINE
 Corner of Sec. 36 Township 32 Range 25

I hereby certify that on the 27TH day of MARCH, 1963, I ^{SET} found the described corner which was evidenced by AREA RESURVEY

and I further certify that to perpetuate the location of said corner, I did, at the exact location thereof, place a permanent marker consisting of CAST IRON MONUMENT
~~SIG~~ & ~~POST~~ ~~IN~~ ~~THE~~

which reference or witness monuments are located in the manner following:

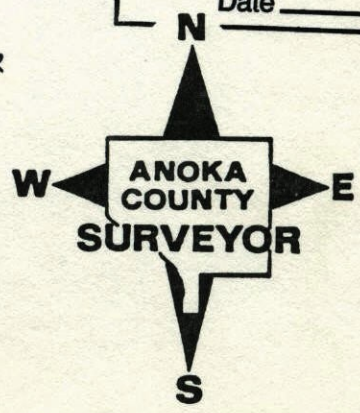


BLACKTOP
 BOAT LANDING
 ANOKA COUNTY
 FAIR GROUNDS

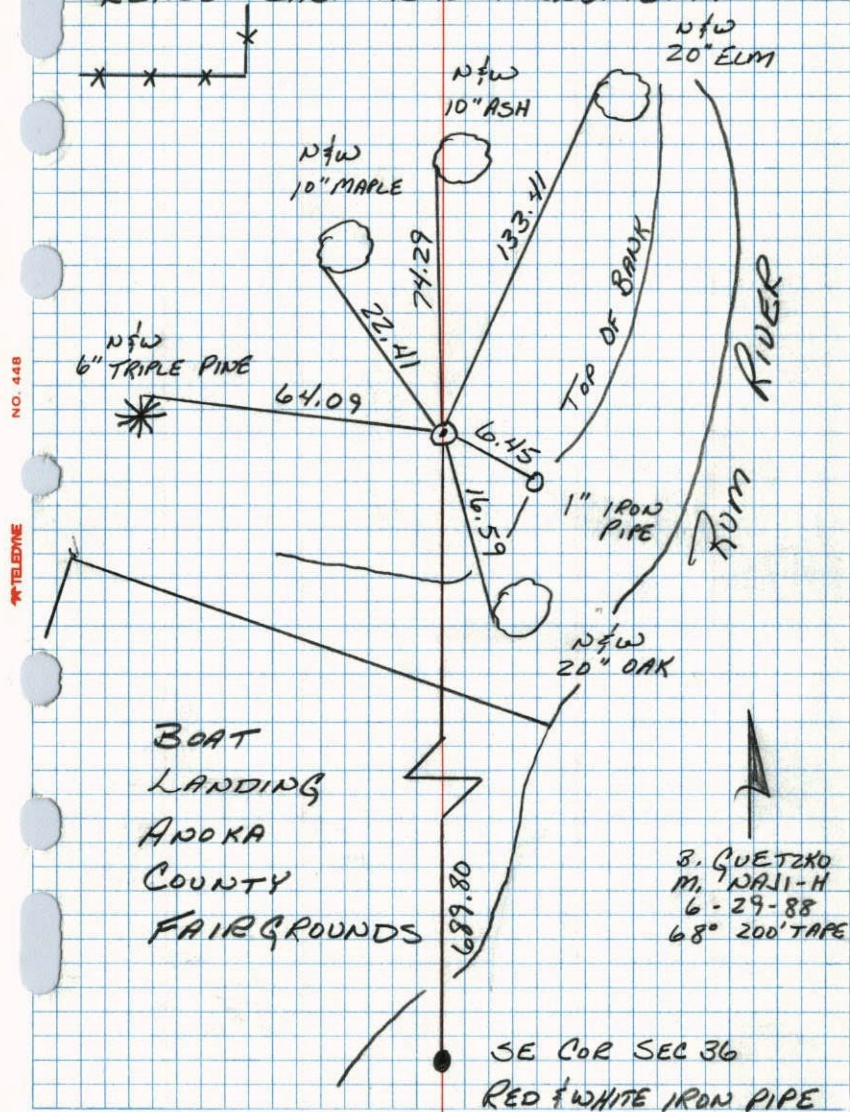
N.A.D.	1983	Co-ordinate
County	Project	Co-ordinate
Northing	<u>165290.4218</u>	
Easting	<u>468547.2266</u>	
State Plane Co-ordinates		
Y	_____	
X	_____	
Date	_____	

Revised date	Revised date	Revised date
8-2-72		
7-12-76		
8-17-82		
7-17-85		
6-29-88		
8-25-93		
4-6-00		

SOUTHEAST CORNER
 SECTION 36
 RED & WHITE
 IRON PIPE



WITNESS CORNER TO MEANDER CORNER #3
ON THE EAST LINE OF SEC 36 T32 R25
RETIRED CAST IRON MONUMENT.



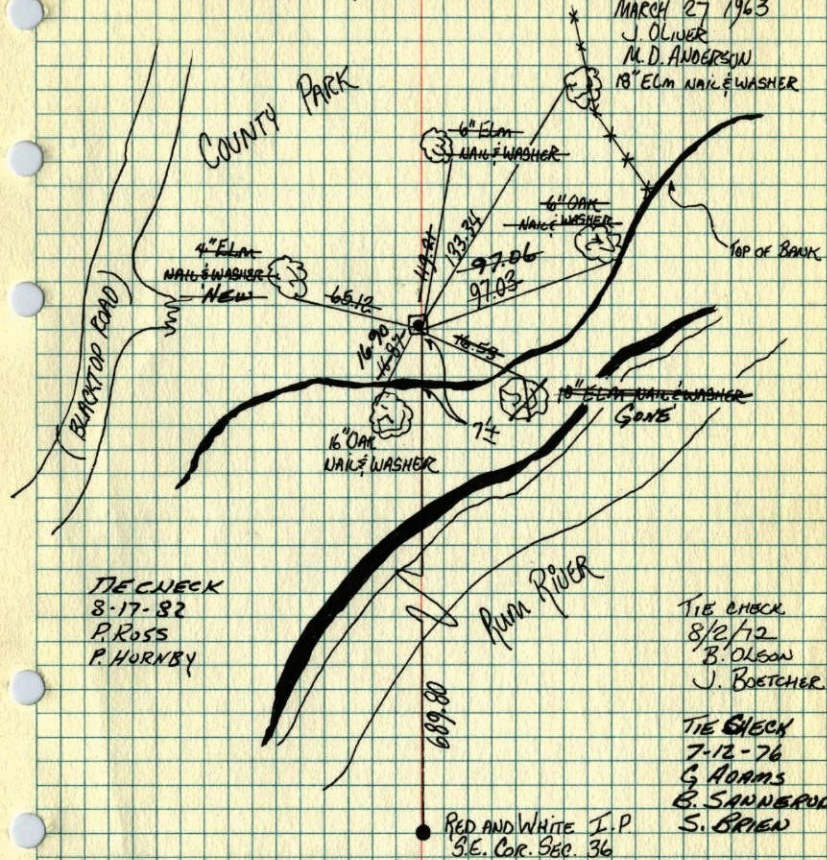
WITNESS CORNER TO MEANDER CORNER #3

ON EAST LINE SEC 36 T32 R25

SET CAST IRON MONUMENT FROM RESURVEY

MARCH 27 1963

J. OLIVER
M. D. ANDERSON
18" ELM NAIL WASHER



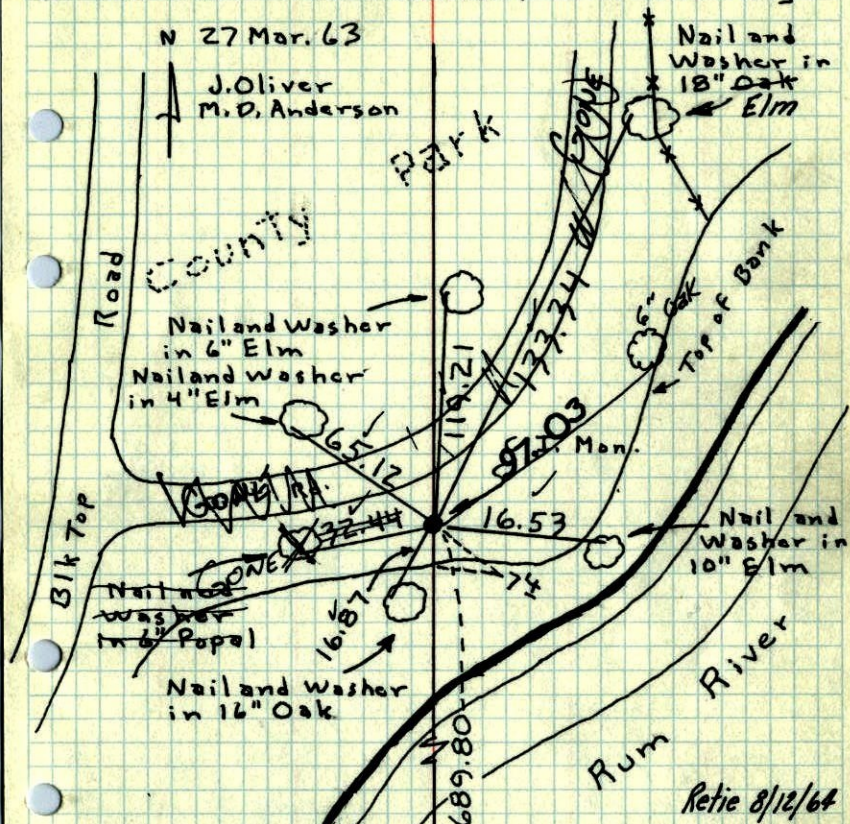
TEMPERATURE CORRECTED ROLAND W. ANDERSON
AND HORIZONTALLY TAPED MEASUREMENTS
COUNTY SURVEYOR
ANOKA COUNTY, MINNESOTA

Witness Corner to Meander Corner
on E. Line Sec. 36, T32, R25.

Set Cast Iron Monument From Resurvey.

N 27 Mar. 63

J. Oliver
M. D. Anderson



TEMPERATURE CORRECTED
AND HORIZONTALLY
TAPED MEASUREMENTS

Tie Check
July 22, 1968
D. Powell
P. Pich

Red and white I.P.
SE Cor. Sec. 36

ROLAND W. ANDERSON
COUNTY SURVEYOR
'ANOKA COUNTY, MINNESOTA'

8/22/72
B. Son
J. Quattner
R. Gauer

Retie 8/12/64

M. D. Anderson
J. Dunlop

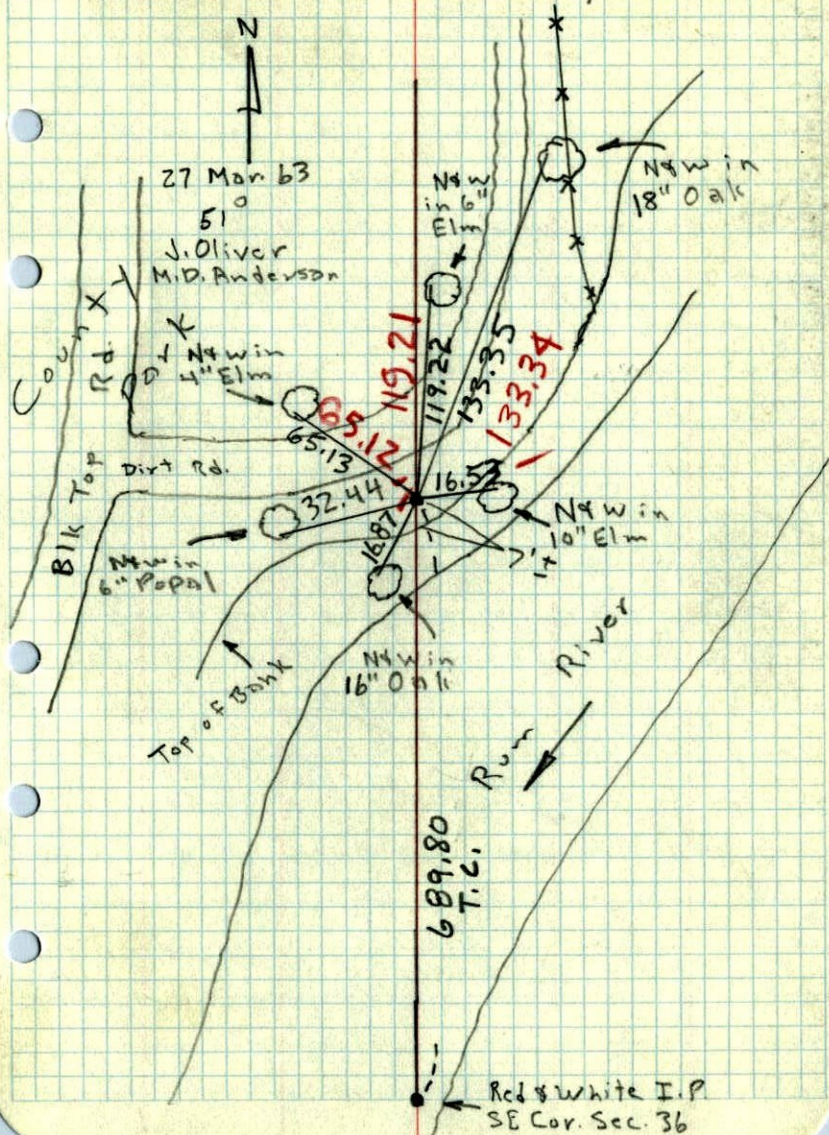
Witness Corner to Meander Corner
#5 on E. line of S 1/2 of Sec. 36, T32, R25

Set C. I. Mon. From Resurvey.

N

27 Mar 63

51
J. Oliver
M. D. Anderson



Red & white I.P.
SE Cor. Sec. 36