

CERTIFICATE OF LOCATION OF GOVERNMENT CORNER

County of Anoka

State of Minnesota

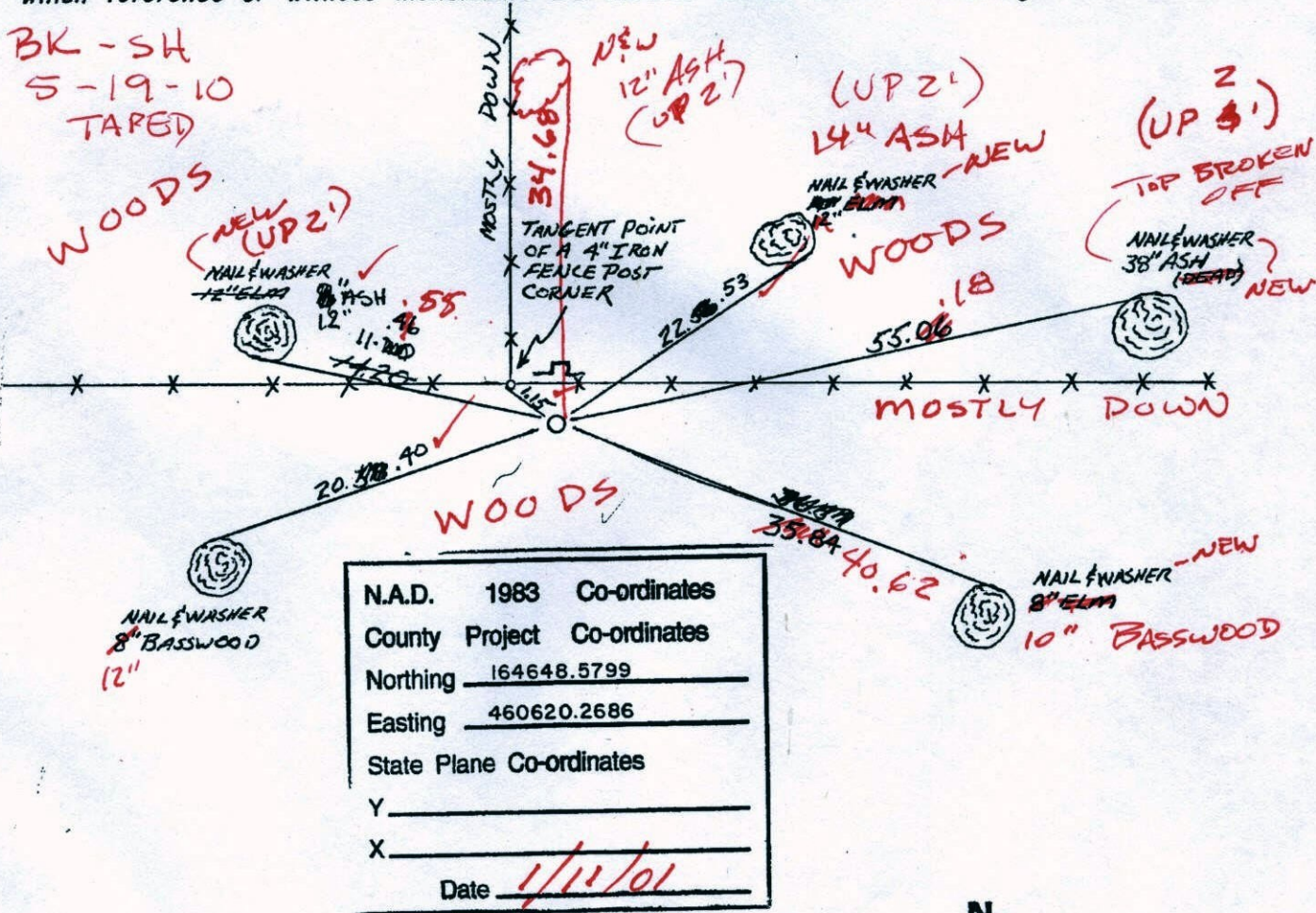
South 1/4 Corner of Sec. 35 Township 32 Range 25

I hereby certify that on the 5TH day of JANUARY, 1961, I found the described corner which was evidenced by OLD BED POST

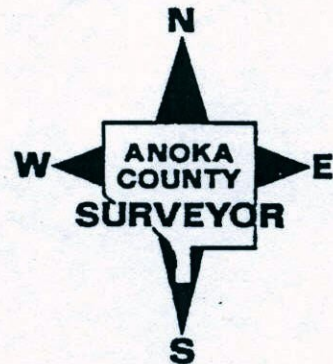
ACCESS S. SIDE OF ANOKA VO. TECH-TRAIL SOUTH

and I further certify that to perpetuate the location of said corner, I did, at the exact location thereof, place a permanent marker consisting of CAST IRON MONUMENT SIGN POST 1'± NORTH OF MONUMENT (FLUSH)

which reference or witness monuments are located in the manner following:



Revised date	Revised date	Revised date
8-28-67		
7-1-69		
7-15-76		
8-17-82		
7-6-88		
8-20-93		
1-11-01		



CERTIFICATE OF LOCATION OF GOVERNMENT CORNER

County of Anoka

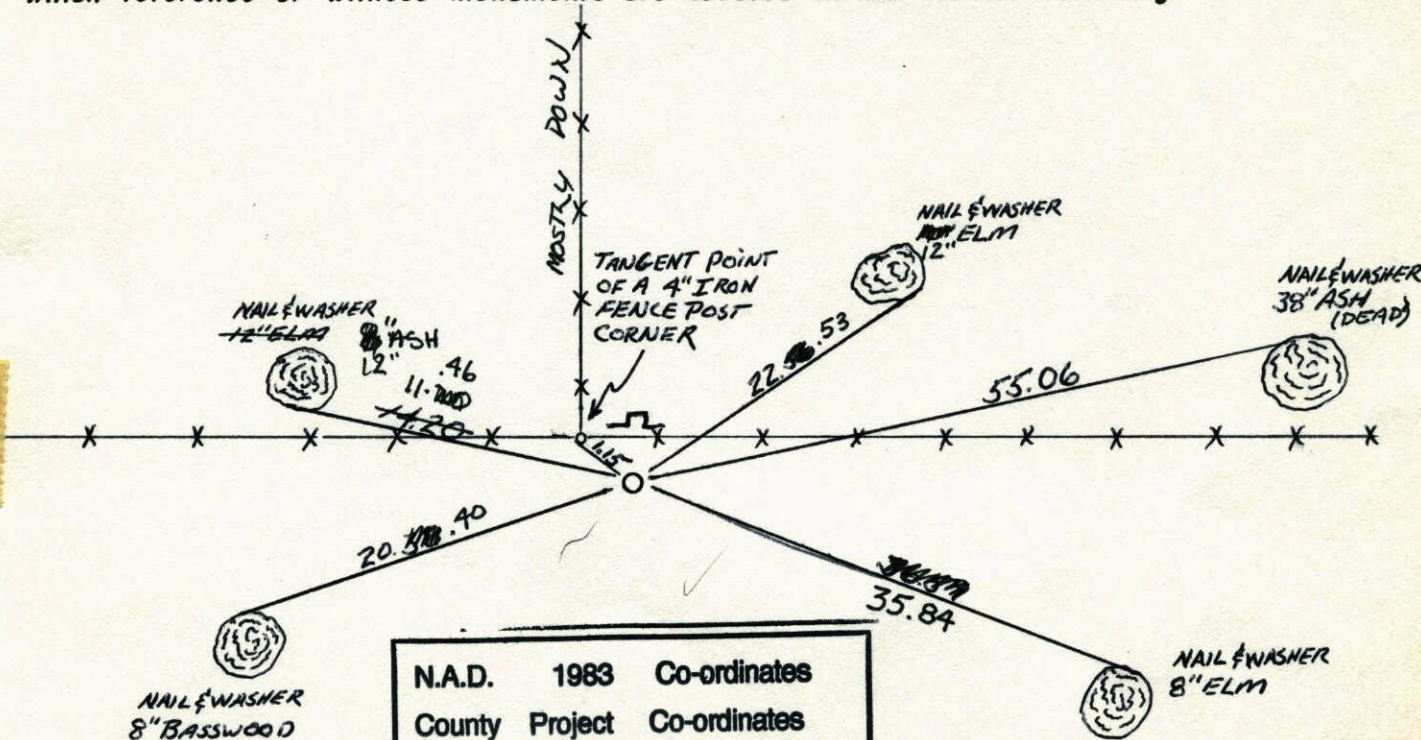
State of Minnesota

SOUTH 1/4 Corner of Sec. 35 Township 32 Range 25

I hereby certify that on the 5TH day of JANUARY, 1961, I found the described corner which was evidenced by OLD BED POST

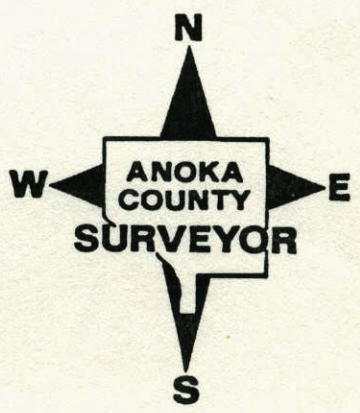
and I further certify that to perpetuate the location of said corner, I did, at the exact location thereof, place a permanent marker consisting of CAST IRON MONUMENT SIGN POST 1'± NORTH OF MONUMENT

which reference or witness monuments are located in the manner following:

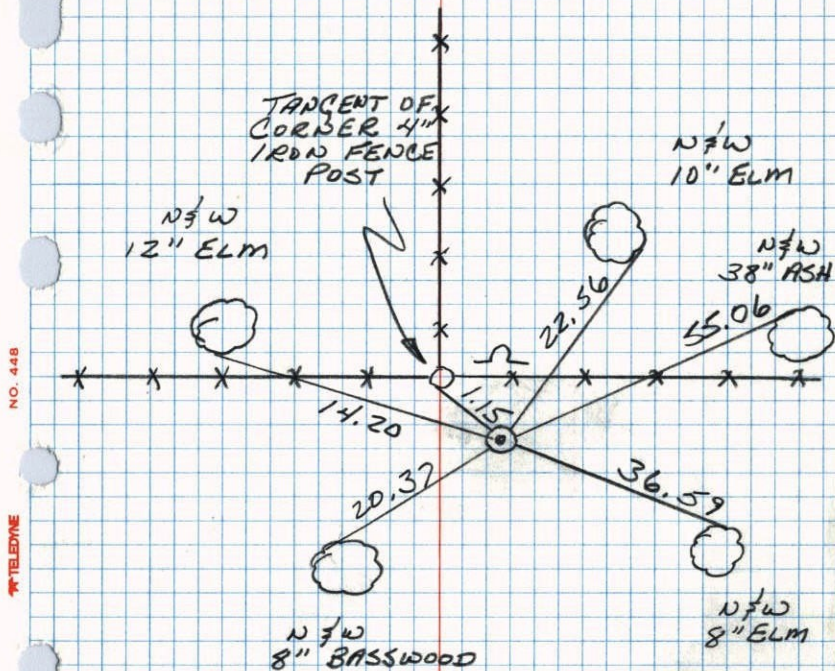


N.A.D.	1983	Co-ordinates
County	Project	Co-ordinates
Northing		<u>164648.5799</u>
Easting		<u>460620.2686</u>
State Plane Co-ordinates		
Y		_____
X		_____
Date _____		

Revised date	Revised date	Revised date
8-28-67		
7-1-69		
7-15-76		
8-17-82		
7-6-88		
8-20-93		
1-11-01		



S¹/₄ CORNER SEC 35 T32 R25
RETIED CAST IRON MONUMENT



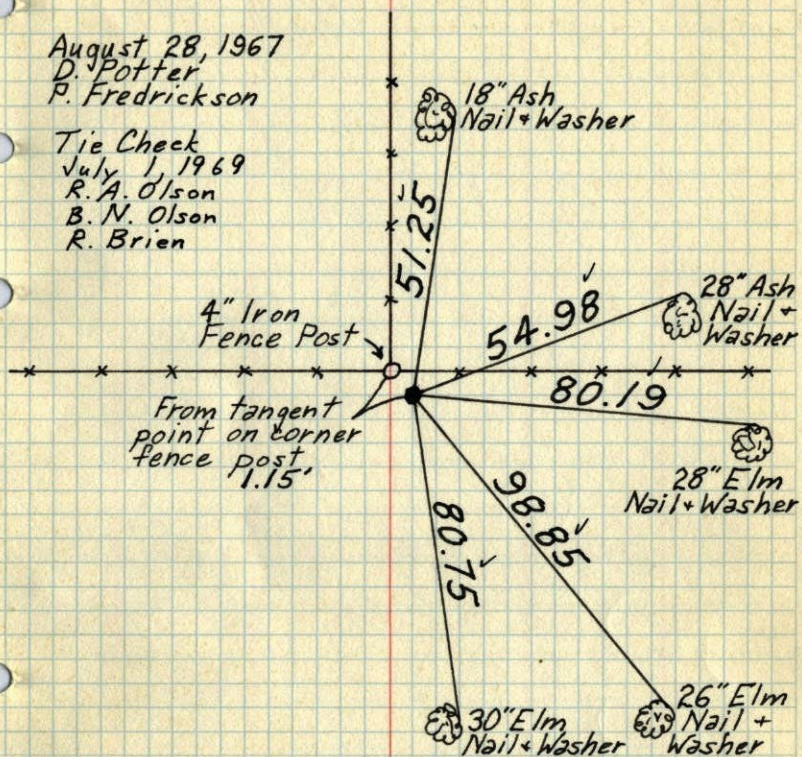
77-88
B. GUTZKO
A. SHROYER
M. NAJI-H
95° 200' TAPE

S¹/₄ Cor. Sec. 35 - T32 - R25

Cast Iron Monument flush

August 28, 1967
D. Potter
P. Fredrickson

Tie Check
July 1, 1969
R. A. Olson
B. N. Olson
R. Brien



TIE CHECK
8-17-82
P. ROSS
P. HORNBY

TIE CHECK
7-15-76
G. ADAMS
Q. DAHL

TIE CHECK
8-2-79
B. STEPHENS
D. STEPHENS
P. ROSS

TEMPERATURE CORRECTED
AND HORIZONTALLY
TAPED MEASUREMENTS

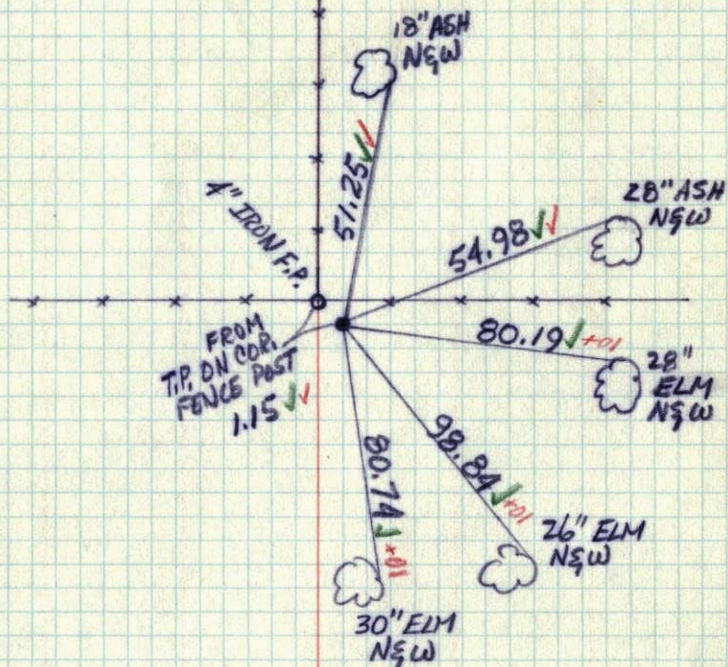
ROLAND W. ANDERSON
COUNTY SURVEYOR
ANOKA COUNTY, MINNESOTA

S 1/4 COR. SEC. 35, T.32, R.25
 CAST IRON FLUSH

8/28/67

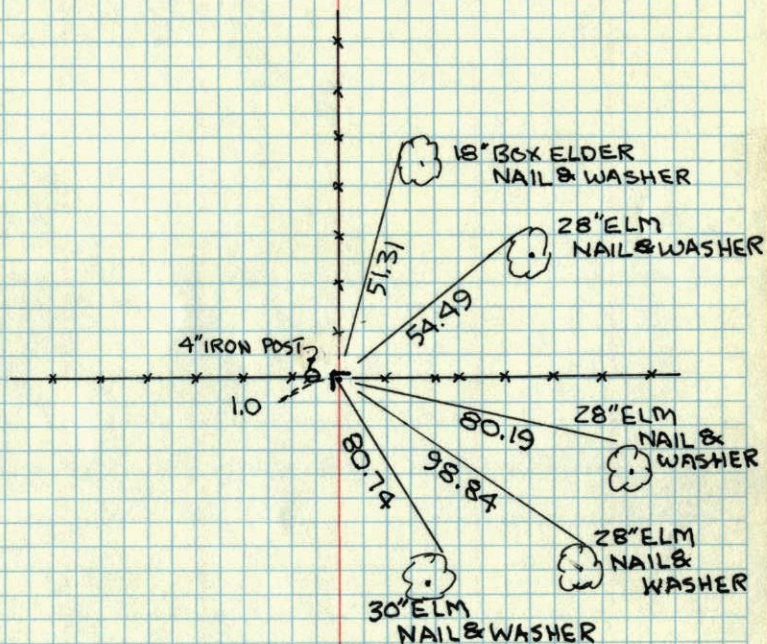
D. POTTER
 P. FREDRICKSON

✓#7-79✓



S 1/4 SEC. 35, T.32, R.25

OLD BED POST
 UP 0.3'



JAN. 5, 1961

R. FREEMAN
 M. ANDERSON

TEMPERATURE CORRECTED
 AND HORIZONTALLY
 TAPED MEASUREMENTS

ROLAND W. ANDERSON
 COUNTY SURVEYOR
 ANOKA COUNTY, MINNESOTA

5 Jan 1961
Freeman Anderson
+ 32°

5¹/₄ Sec 35-32-25

Found old Bed Post at S₁ Cor of + fence

