

# CERTIFICATE OF LOCATION OF GOVERNMENT CORNER

County of Anoka

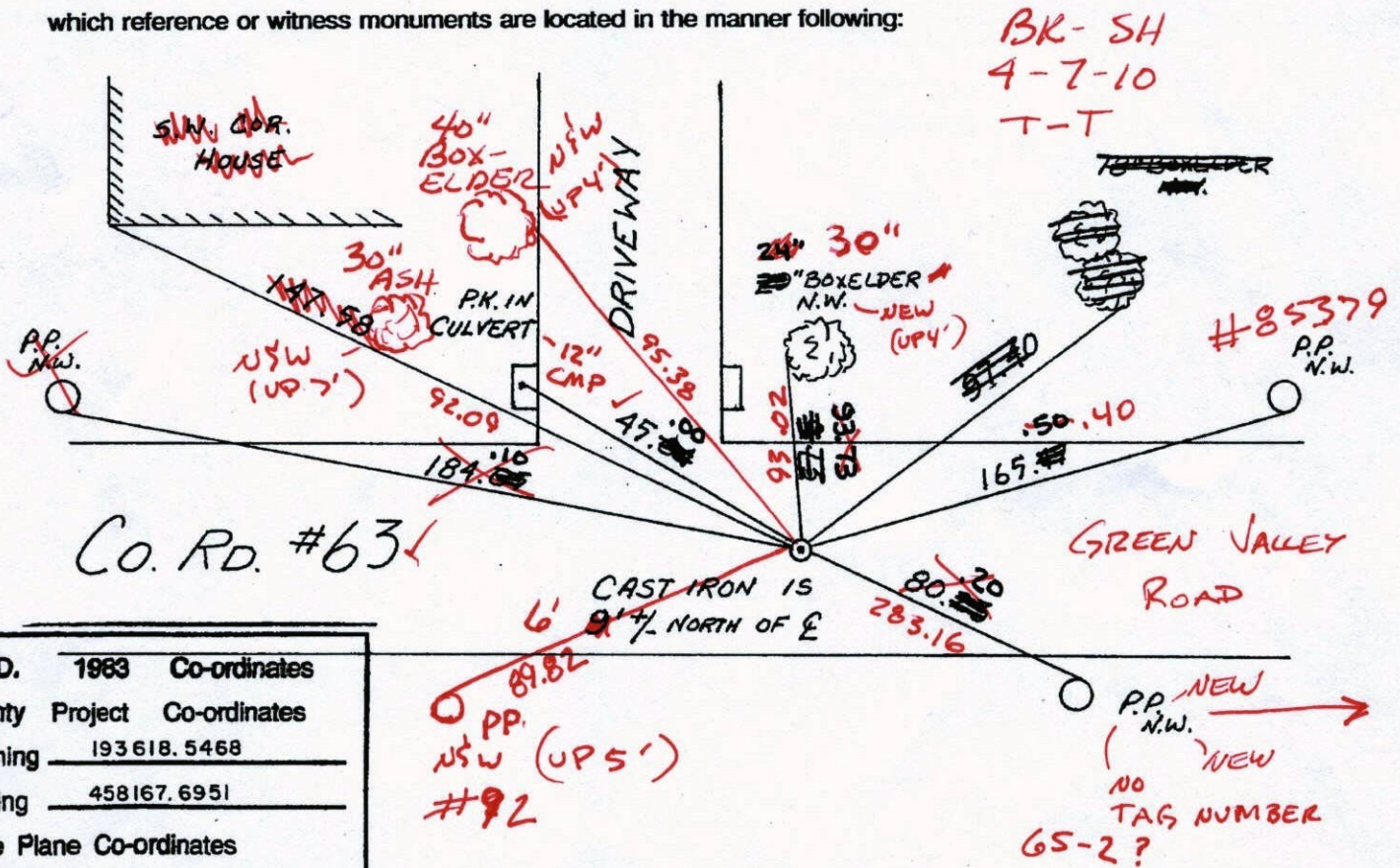
State of Minnesota

EAST QTR Corner of Sec. 3 Township 32 Range 25

I hereby certify that on the 10 day of JUNE, 1969, I found the described corner which was evidenced by AREA RESURVEY

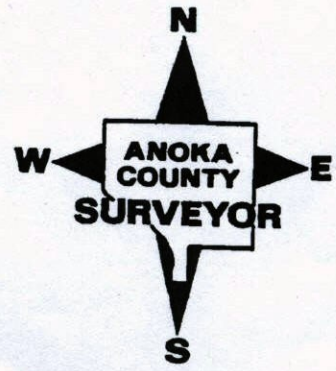
and I further certify that to perpetuate the location of said corner, I did, at the exact location thereof, place a permanent marker consisting of CAST IRON MON. (6' N. OF E)

which reference or witness monuments are located in the manner following:



N.A.D.	1983	Co-ordinates
County	Project	Co-ordinates
Northing	193618.5468	
Easting	458167.6951	
State Plane Co-ordinates		
Y	_____	
X	_____	
Date	9/1/99	

Revised date	Revised date	Revised date
6-14-88		
8-6-93		
9-1-99		



# CERTIFICATE OF LOCATION OF GOVERNMENT CORNER

County of Anoka

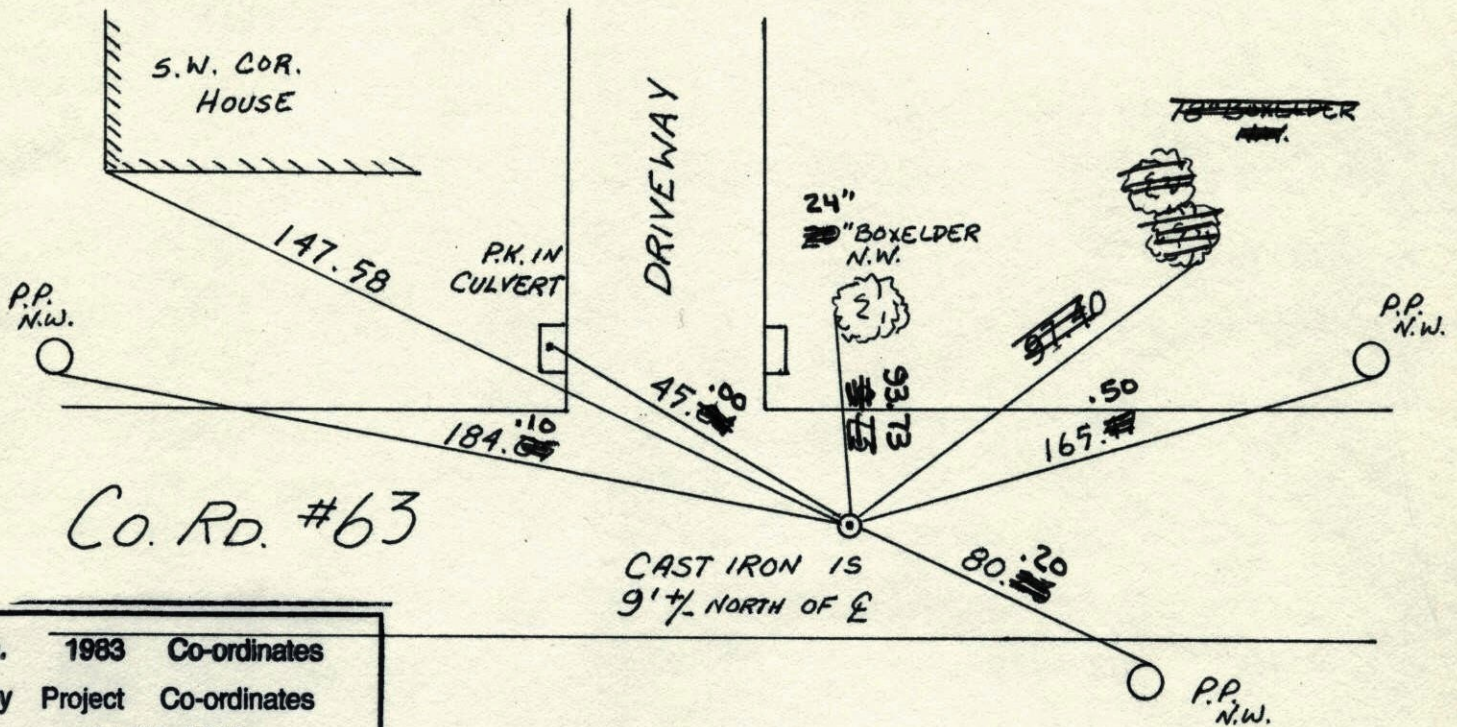
State of Minnesota

EAST QTR. Corner of Sec. 3 Township 32 Range 25

I hereby certify that on the 10 day of JUNE, 1969, I found the described corner which was evidenced by AREA RESURVEY

and I further certify that to perpetuate the location of said corner, I did, at the exact location thereof, place a permanent marker consisting of CAST IRON MON.

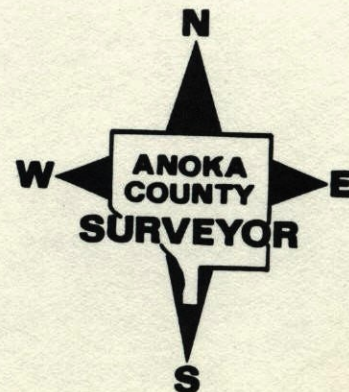
which reference or witness monuments are located in the manner following:



*Co. Rd. #63*

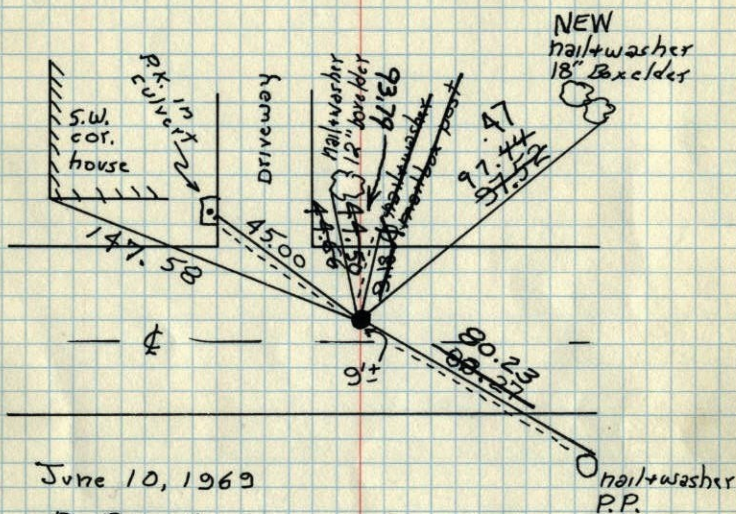
N.A.D.	1983	Co-ordinates
County	Project	Co-ordinates
Northing	193618.5468	
Easting	458167.6951	
State Plane Co-ordinates		
Y	_____	
X	_____	
Date	_____	

Revised date	Revised date	Revised date
6-14-88		
8-6-93		
9-1-99		



## E 1/4 Cor. Sec. 3 T32 R25

Retied cast iron monument.  
 (----- new Ties) Placed P.K.'s 2' N. & E.



June 10, 1969

D. Powell  
 R. Olson  
 B. Olson

Tie Check  
 6-15-79  
 B Stephens  
 D Stephens  
 P Ross

Tie Check  
 July 25, 1972  
 B. Olson  
 J. Boettcher  
 D. Brien

Tie Check  
 6-21-76  
 G. Adams  
 B. Sannerud  
 S. Brien

TEMPERATURE CORRECTED  
 AND HORIZONTALLY  
 TAPED MEASUREMENTS

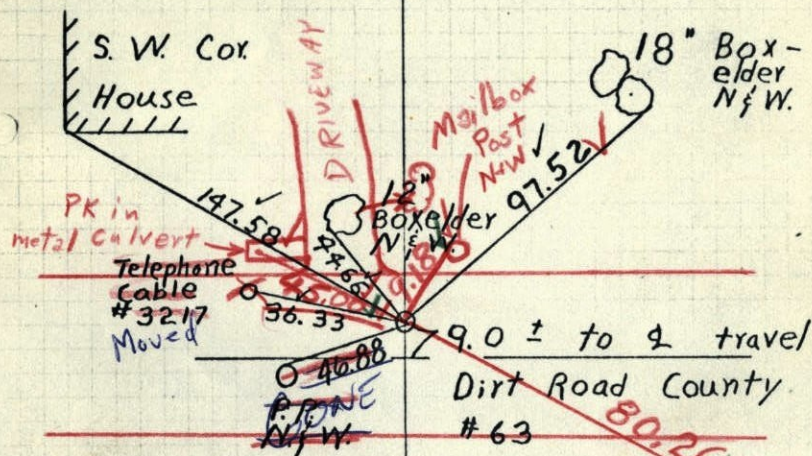
TIE CHECK  
 8-23-82  
 P. ROSS  
 P. HORNBY

Tie Check  
 7-23-85  
 D. Ross  
 P. Vogel  
 G. Widmark  
 #4, 82°

ROLAND W. ANDERSON  
 COUNTY SURVEYOR  
 ANOKA COUNTY, MINNESOTA

## E 1/4 Cor Sec. 3-32-25

Set cast iron monument on a  
 straight line and on prorated  
 distance from old Survey dist.  
 between N.E. Cor & S.E. Cor Sec 3.



July 21, 1961

Freeman  
 Anderson

Retie 8/10/64

M. D. Anderson  
 J. Dunlop

6/10/69  
 #6-72°  
 D. Powell  
 R. Olson  
 B. Olson

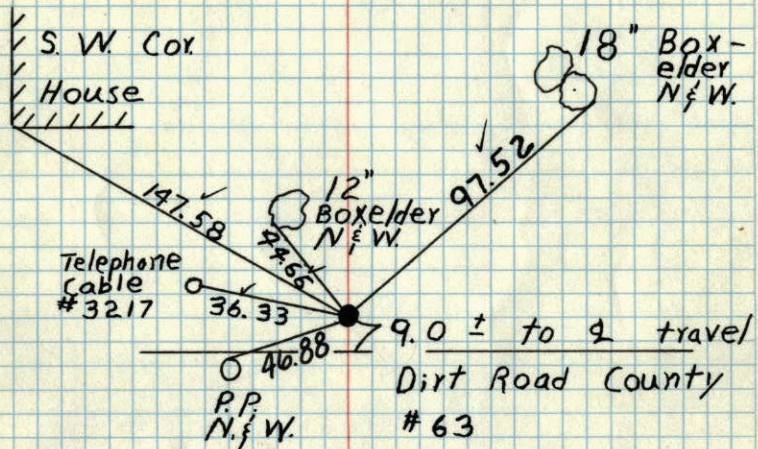
TEMPERATURE CORRECTED  
 AND HORIZONTALLY  
 TAPED MEASUREMENTS

ROLAND W. ANDERSON  
 COUNTY SURVEYOR  
 ANOKA COUNTY, MINNESOTA

19

E 1/4 Cor Sec. 3-32-25

Set cast iron monument on a straight line and on prorated distance from old Survey dist. between N.E. Cor & S.E. Cor Sec 3.



July 21, 1961

Freeman  
Anderson

Retie 8/10/64

M. D. Anderson  
J. Dunlop

TEMPERATURE CORRECTED  
AND HORIZONTALLY  
TAPED MEASUREMENTS

ROLAND W. ANDERSON  
COUNTY SURVEYOR  
ANOKA COUNTY, MINNESOTA

21 July 1961  
Freeman Anderson  
+75°

E 1/4 Cor Sec 3.32.25 Ramsey

Set Cast Iron Mon. (Mon was set on a straight line & on prorated dist from old Survey dist. between NE Cor & SE Cor Sec 3)

