

CERTIFICATE OF LOCATION OF GOVERNMENT CORNER

County of Anoka

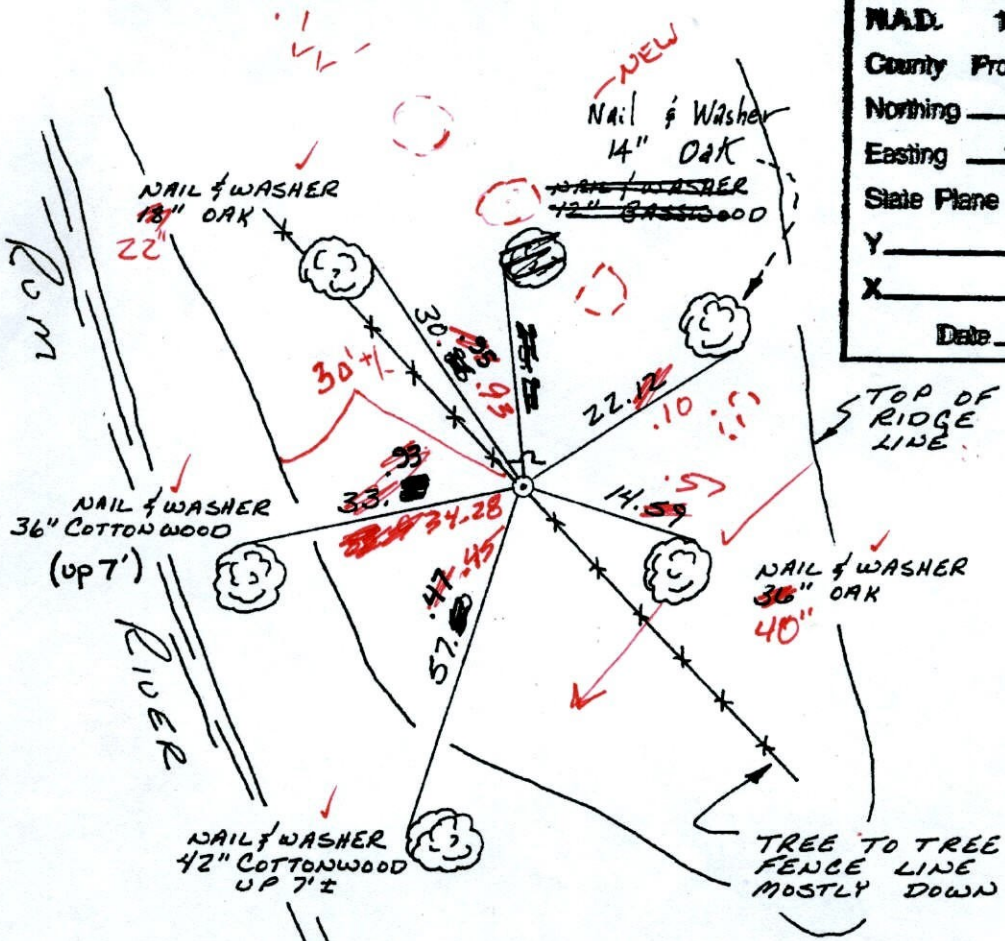
State of Minnesota

WITNESS SOUTH LINE Corner of Sec. 1 Township 32 Range 25

I hereby certify that on the 9 day of FEBRUARY, 1966, I found the described corner which was evidenced by AREA RESURVEY

and I further certify that to perpetuate the location of said corner, I did, at the exact location thereof, place a permanent marker consisting of CAST IRON MONUMENT WITH SIGN AND POST ON THE NORTH SIDE (UP 0.3') which reference or witness monuments are located in the manner following:

NAD. 1983 Co-ordinates	
County Project Co-ordinates	
Northing	190936.8230
Easting	465061.3005
State Plane Co-ordinates	
Y	
X	
Date	<u>2/15/00</u>



BK-SH
5-20-10
TAPED

Revised date	By
8-18-82	ROSS
7-15-88	GUETZKO
2-15-00	

Minnesota State Plane Coordinates
South Zone
Y _____ X _____
County Surveyor _____ Date _____
Registered Land Surveyor No. _____

CERTIFICATE OF LOCATION OF GOVERNMENT CORNER

County of Anoka

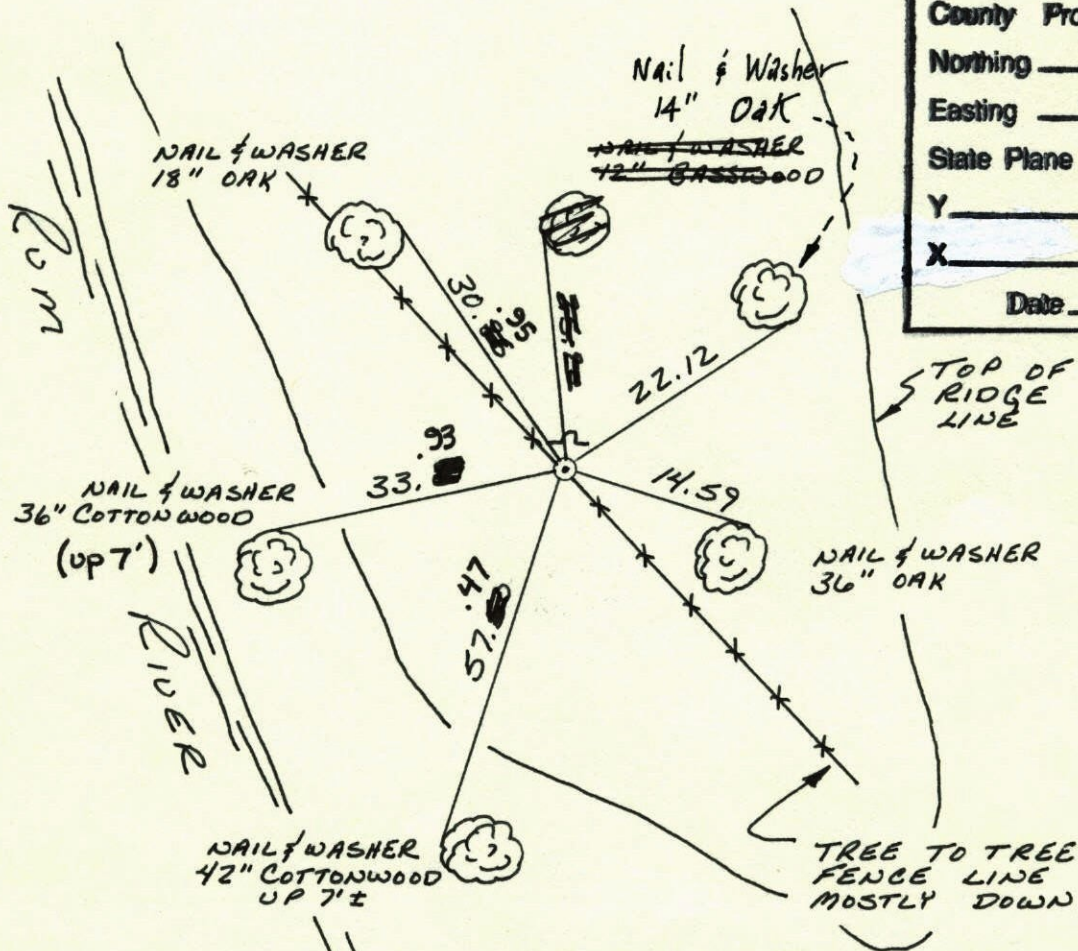
State of Minnesota

WITNESS SOUTH LINE Corner of Sec. 1 Township 32 Range 25

I hereby certify that on the 9 day of FEBRUARY, 1966, I found the described corner which was evidenced by AREA RESURVEY

and I further certify that to perpetuate the location of said corner, I did, at the exact location thereof, place a permanent marker consisting of CAST IRON MONUMENT WITH SIGN AND POST ON THE NORTH SIDE

which reference or witness monuments are located in the manner following:



NAD.	1983	Co-ordinates
County	Project	Co-ordinates
Northing		<u>190936.8230</u>
Easting		<u>465061.3005</u>
State Plane Co-ordinates		
Y		_____
X		_____
Date _____		

Revised date
8-18-82
7-15-88
2-15-00

By
ROSS
GUETZKO

Minnesota State Plane Coordinates
South Zone

Y _____ X _____

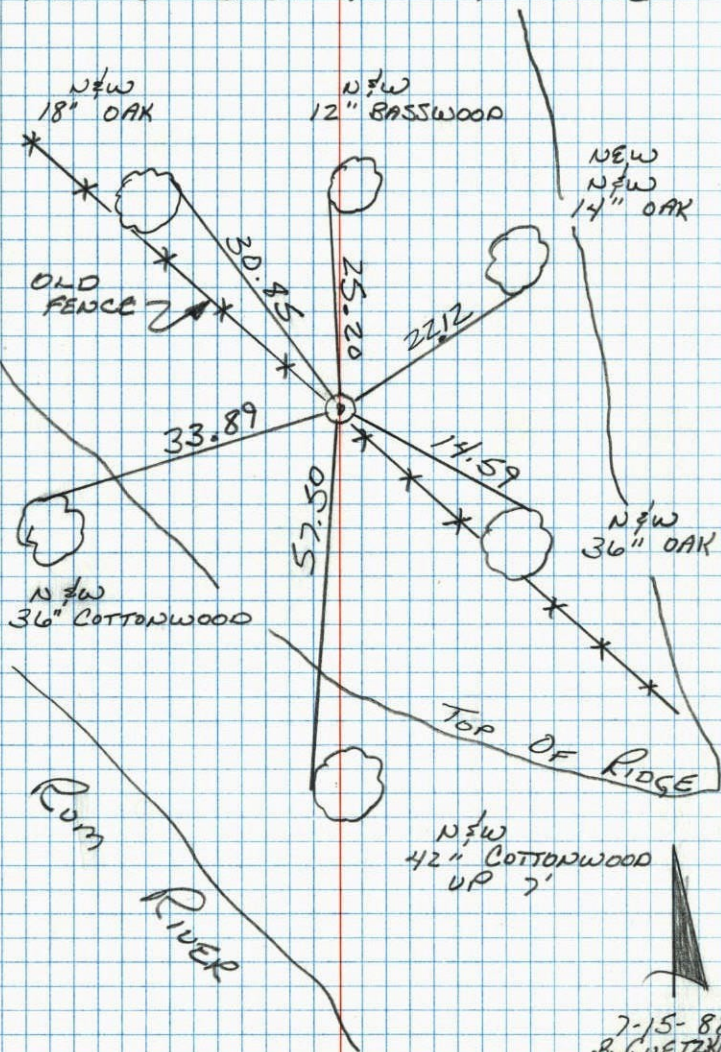
County Surveyor _____

Date _____

Registered Land Surveyor No. _____

WITNESS CORNER ON THE SOUTH LINE
OF SEC 1 T32 R25

RETIRED CAST IRON MONUMENT

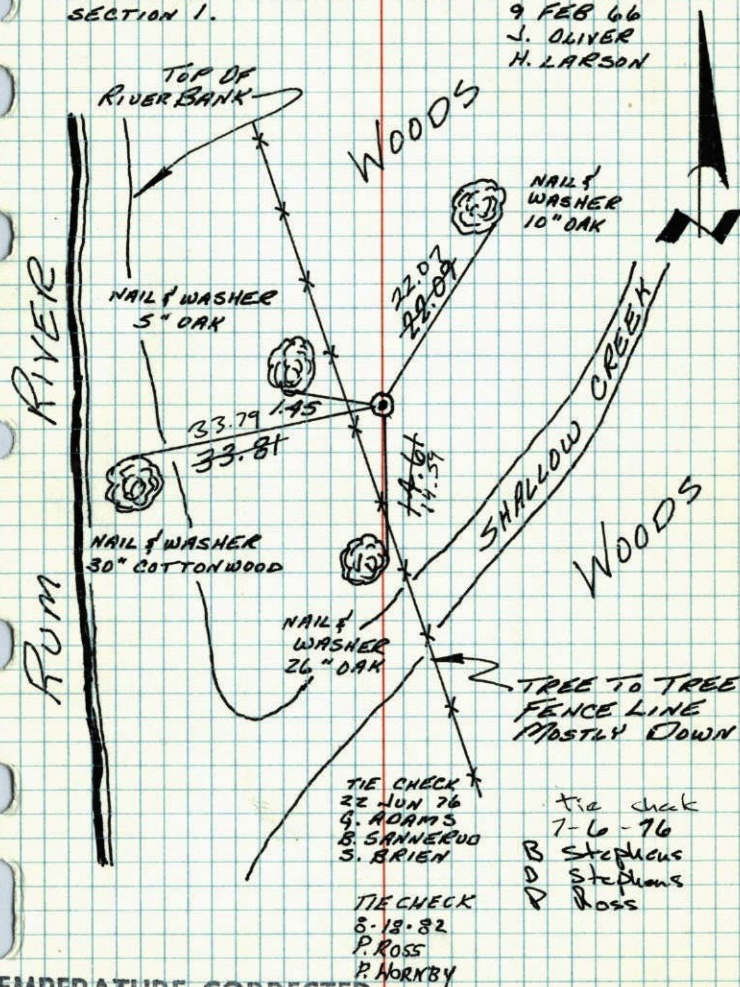


7-15-88
B. GUETZKO
A. SHROVER
M. NALL-H
101° 200' TAPE

WITNESS CORNER ON SOUTH LINE
SECTION 1 - T32 - R25

SET CAST IRON MONUMENT FROM AREA RESURVEY.
CORNER IS 1665.49' EAST OF SW CORNER OF
SECTION 1.

9 FEB 66
J. OLIVER
H. LARSON

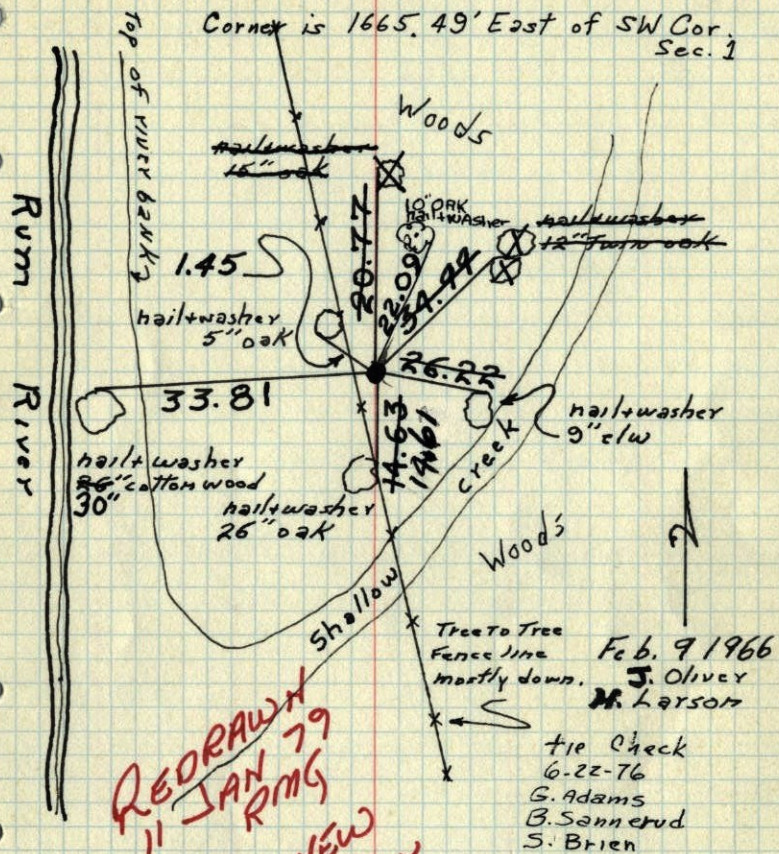


TEMPERATURE CORRECTED
AND HORIZONTALLY
TAPED MEASUREMENTS

ROLAND W. ANDERSON
COUNTY SURVEYOR
ANOKA COUNTY, MINNESOTA

W.C. on South Line Sec. 1 T32 R25

Set cast iron monument from resurvey.

Corner is 1665.49' East of SW Cor.
Sec. 1

REDRAWN
11 JAN 79
RMG
SEE NEW
TIE BOOK

TEMPERATURE CORRECTED
AND HORIZONTALLY
TAPED MEASUREMENTS

ROLAND W. ANDERSON
COUNTY SURVEYOR
ANOKA COUNTY, MINNESOTA

W.C. on South line Sec. 1, T32, R25

Set Cast Iron Monument From Resurvey.

Nails and washers in all tie trees. Mon.

is 1665.49 East of SW Cor. Sec. 1

