

# CERTIFICATE OF LOCATION OF GOVERNMENT CORNER

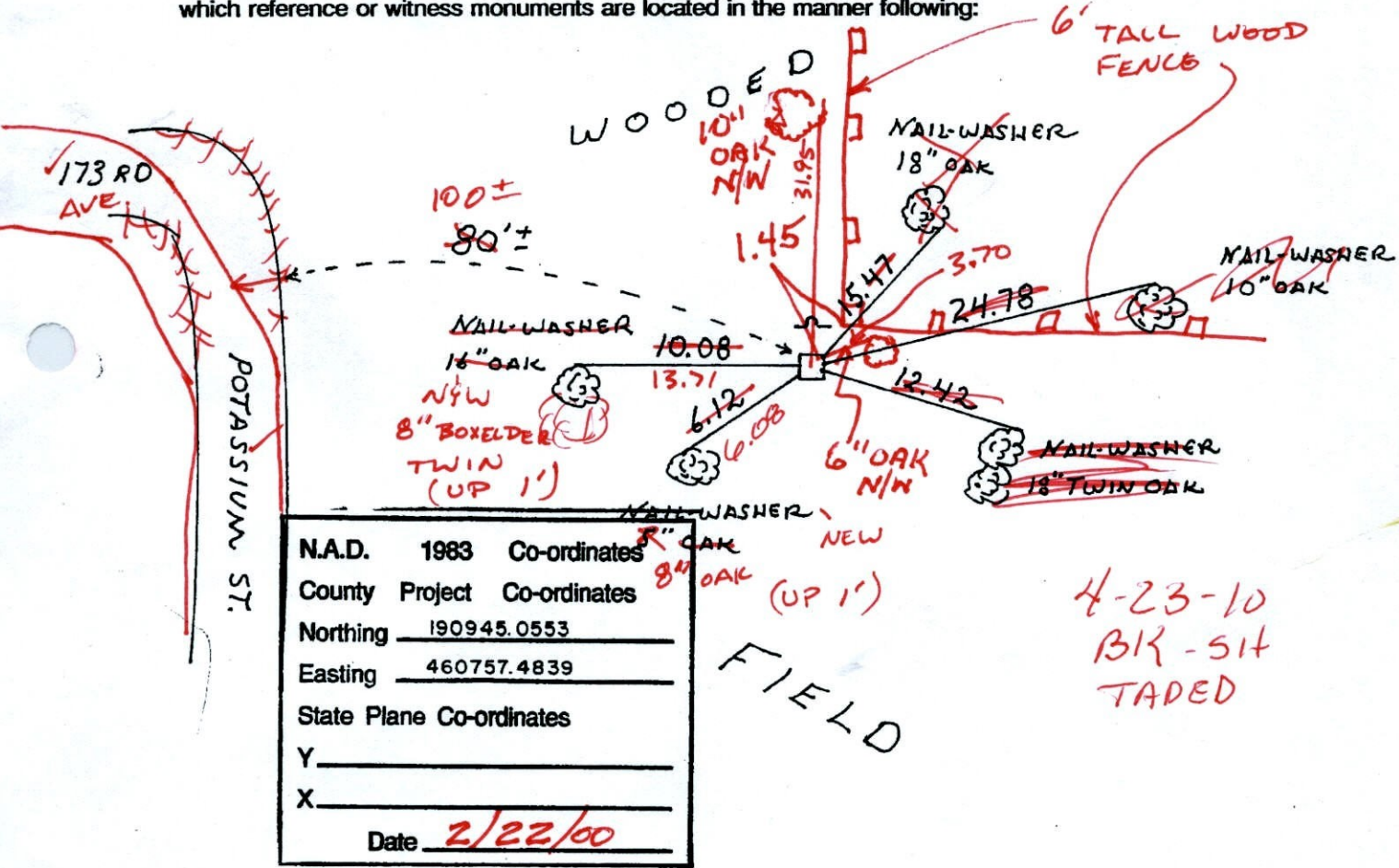
County of Anoka                      State of Minnesota

SOUTH 1/4 Corner of Sec. 2 Township 32 Range 25

I hereby certify that on the 18 day of APRIL, 1962, I found the described corner which was evidenced by CONCRETE MONUMENT ✓

and I further certify that to perpetuate the location of said corner, I did, at the exact location thereof, place a permanent marker consisting of SAME WITH SIGN AND POST ON NORTH SIDE ✓ (FLUSH)

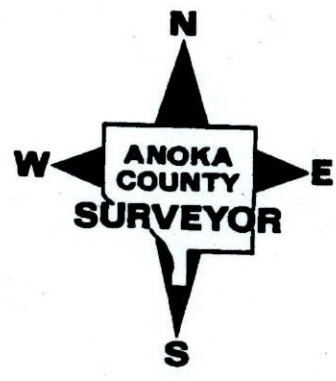
which reference or witness monuments are located in the manner following:



N.A.D.	1983	Co-ordinates
County	Project	Co-ordinates
Northing		<u>190945.0553</u>
Easting		<u>460757.4839</u>
State Plane Co-ordinates		
Y _____		
X _____		
Date <u>2/22/00</u>		

4-23-10  
BK-SIT  
TADED

Revised date	Revised date	Revised date
7-22-85		
6-14-88		
8-6-93		



# CERTIFICATE OF LOCATION OF GOVERNMENT CORNER

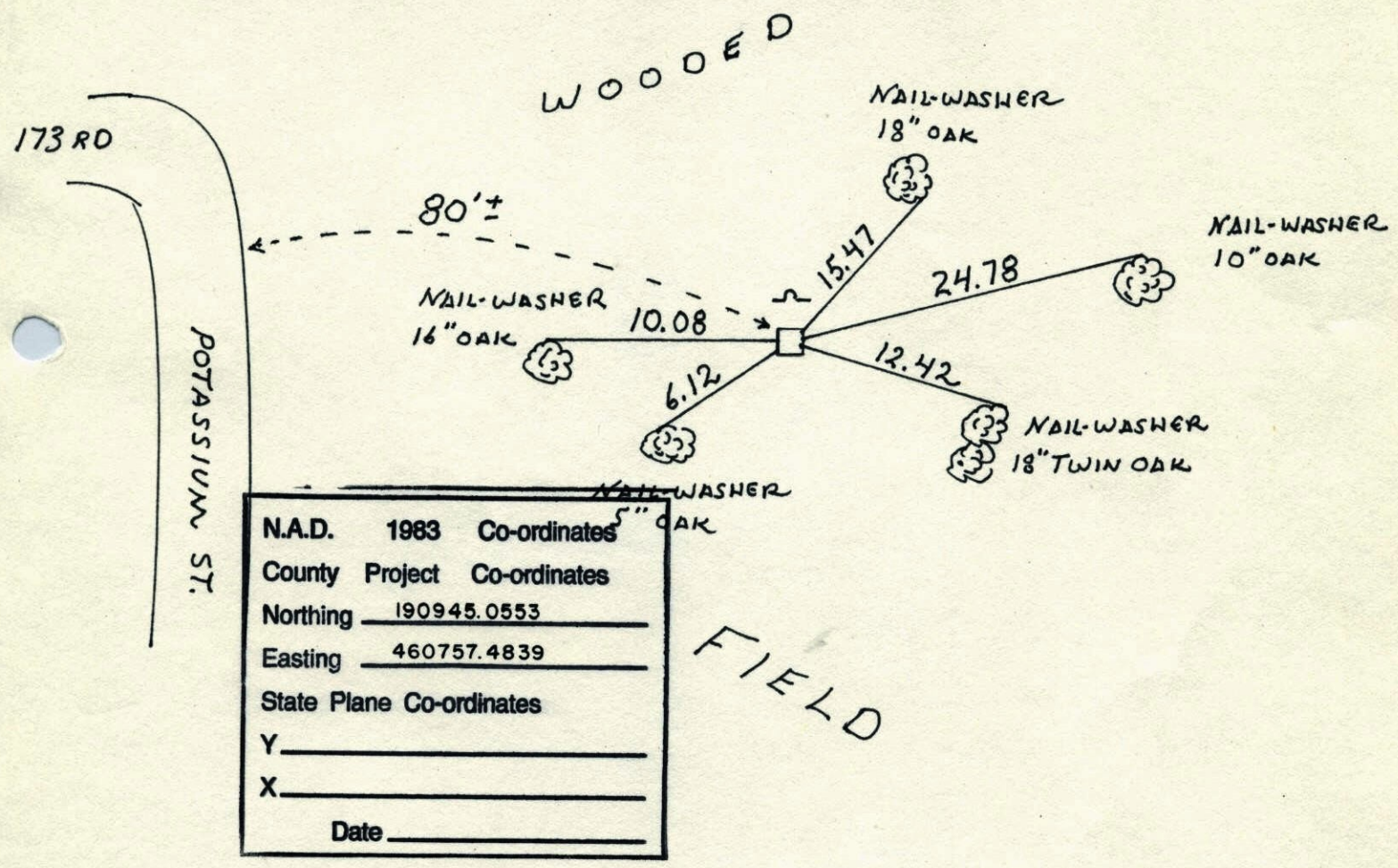
County of Anoka                      State of Minnesota

SOUTH 1/4 Corner of Sec. 2 Township 32 Range 25

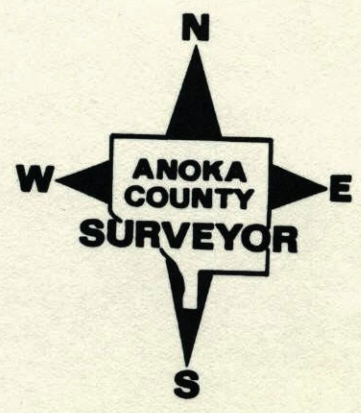
I hereby certify that on the 18 day of APRIL, 19 62, I found the described corner which was evidenced by CONCRETE MONUMENT

and I further certify that to perpetuate the location of said corner, I did, at the exact location thereof, place a permanent marker consisting of SAME WITH SIGN AND POST ON NORTH SIDE

which reference or witness monuments are located in the manner following:



Revised date	Revised date	Revised date
7-22-85		
6-14-88		
8-6-93		

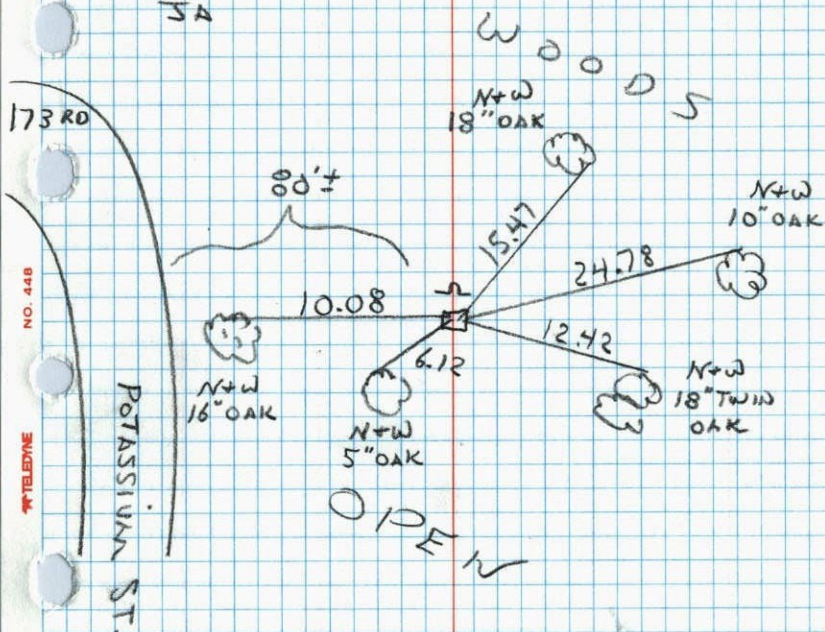


S 1/4 COR. SEC 2 T32 R25

RETIED CONCRETE MON.

SIGN + POST ON NORTH SIDE

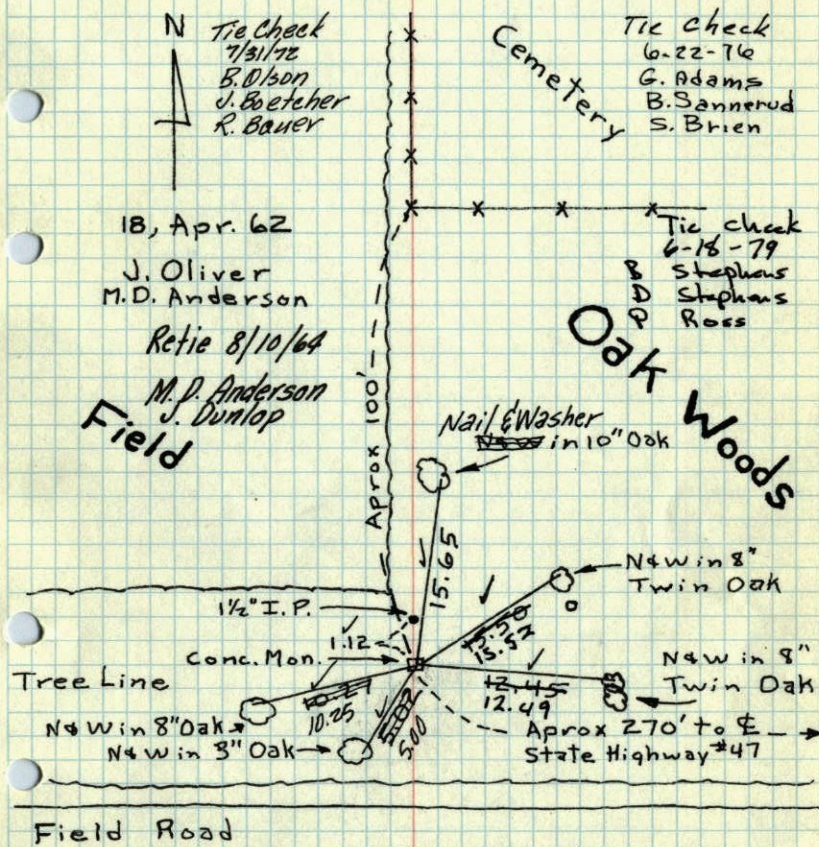
8-6-93

JA  
JA

S 1/4 Cor. Sec. 2, T32, R25

Found 4" Sq. Conc. Mon. down 0.2' - also

Found 1/2" I. P. up 0.2 - 1.12' No. of Conc. Mon.



Field Road

Field

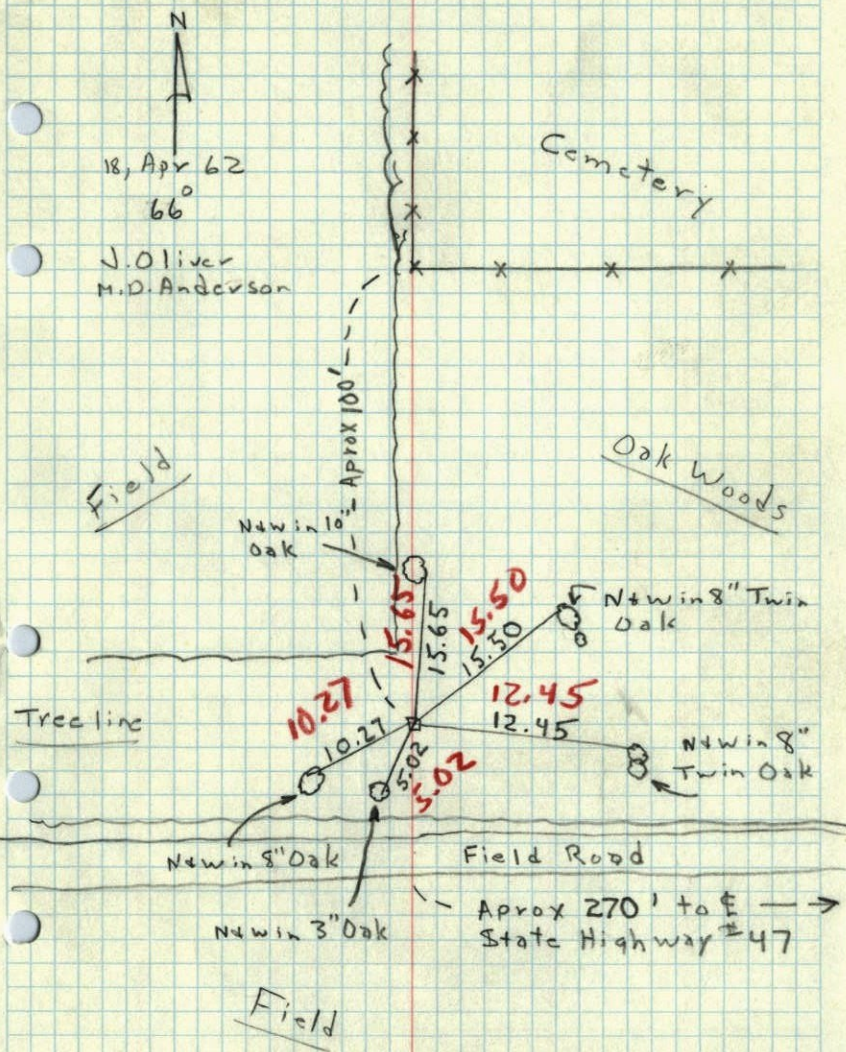
TEMPERATURE CORRECTED  
AND HORIZONTALLY  
TAPED MEASUREMENTS

TIE CHECK Tie Check  
8-18-83 June 9, 1969  
P. ROSS D. Powell  
P. NORRBY R. Olson  
B. Olson  
ROLAND W. ANDERSON  
COUNTY SURVEYOR  
ANOKA COUNTY, MINNESOTA

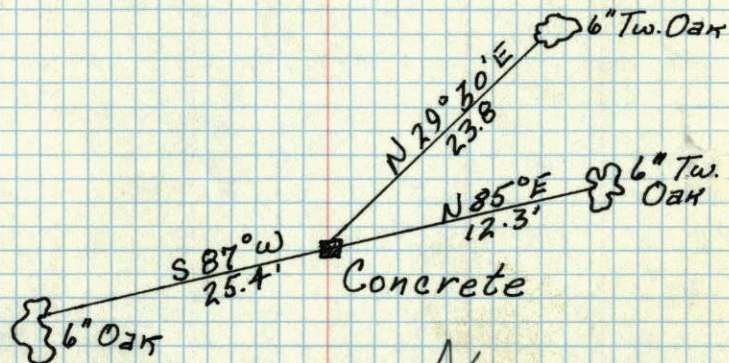
S<sup>1</sup>/<sub>4</sub> Cor. Sec. 2, T32, R25

Found 4" Sq. Conc. Mon. down 0.2' - also

Found 1 1/2" I.P. up 0.2' - 1.12 North of Conc. Mon



5 ✓  
S<sup>1</sup>/<sub>4</sub> CORNER OF SEC 2, T32, R25  
CONCRETE MONUMENT



New Ties in  
New Tie Book

Aug 8, 1945  
CARTWRIGHT