

CERTIFICATE OF LOCATION OF GOVERNMENT CORNER

County of Anoka

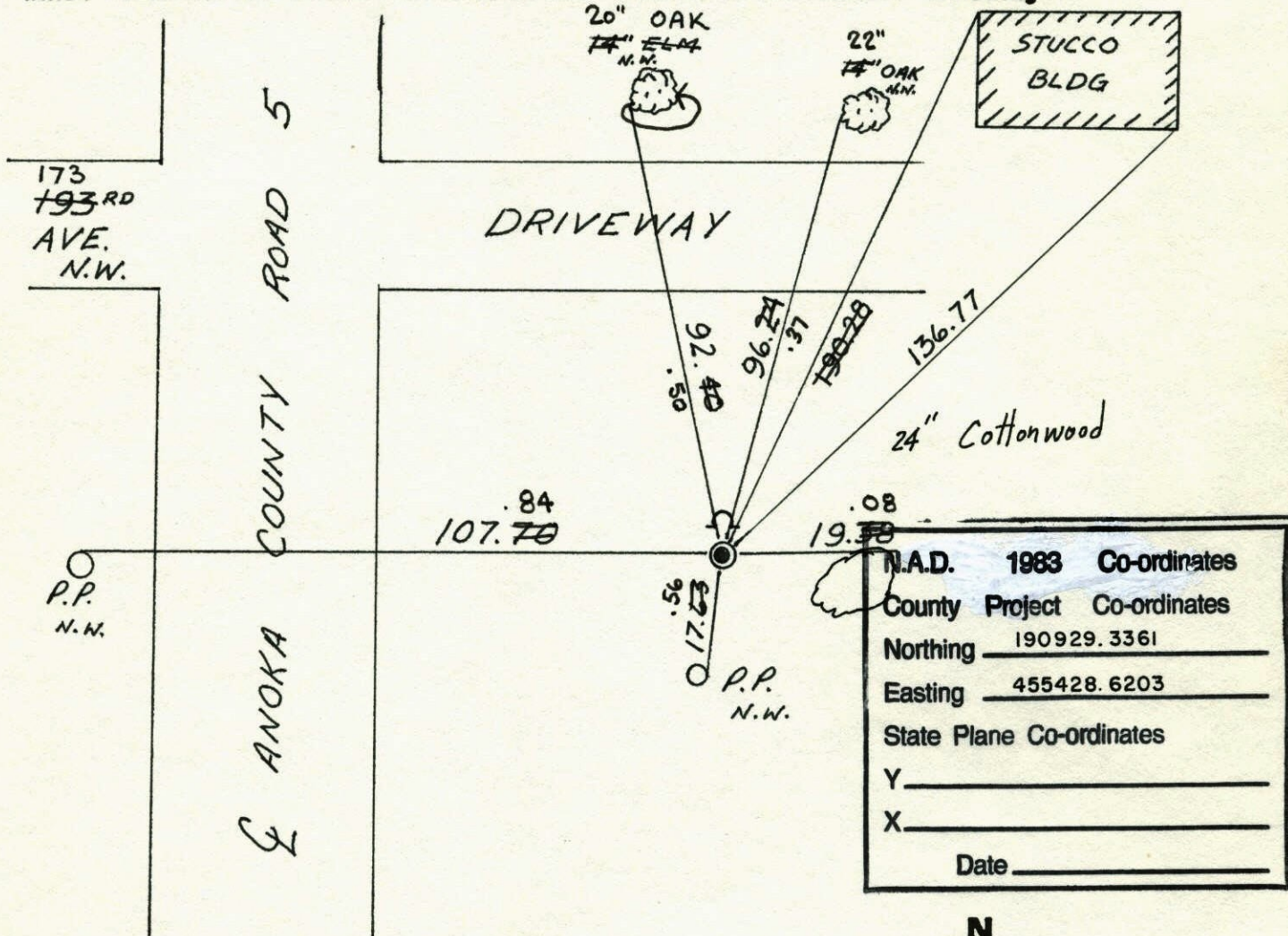
State of Minnesota

NORTH QTR. Corner of Sec. 10 Township 32 Range 25

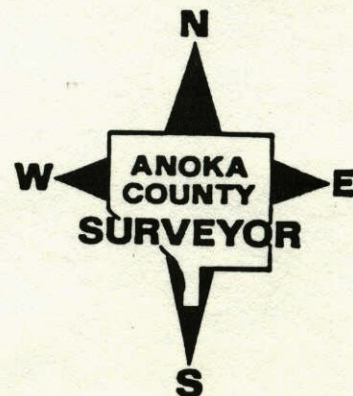
I hereby certify that on the 31 day of JULY, 1973, I found the described corner which was evidenced by 1 SPIKE

and I further certify that to perpetuate the location of said corner, I did, at the exact location thereof, place a permanent marker consisting of CAST IRON MON. SIGN & POST ON NTH SIDE

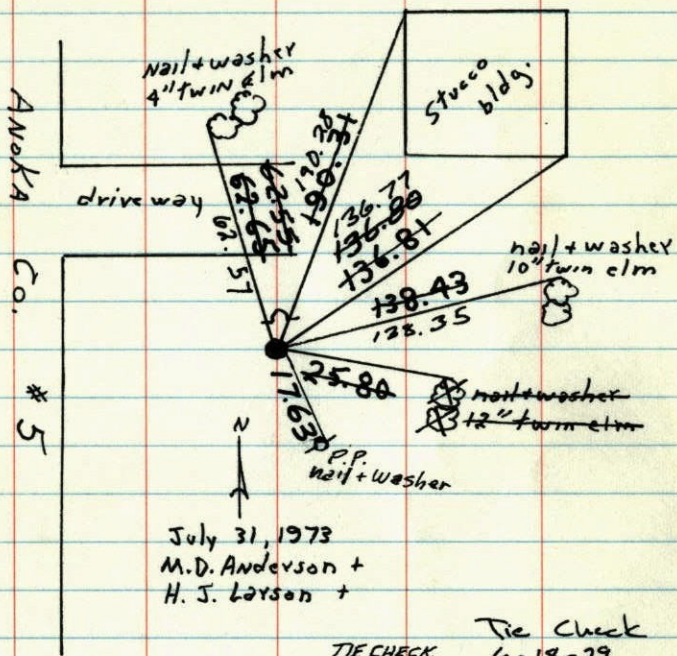
which reference or witness monuments are located in the manner following:



Revised date	Revised date	Revised date
8-20-82		
11-8-83		
7-18-85		
6-16-88		
REDRAWN 11-7-91		
1-4-99		



N¼ Cor Sec. 10 T32 R25
 reset cast iron monument from
 construction ties. set warning sign



July 31, 1973
 M. D. Anderson +
 H. J. Larson +

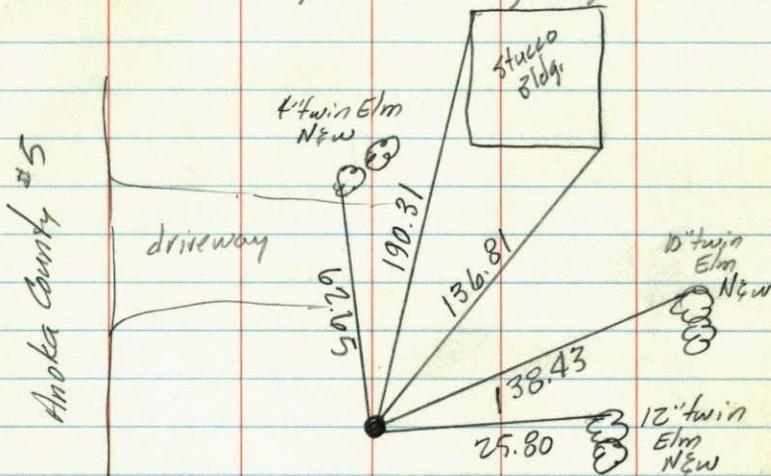
TIE CHECK
 8-20-82
 P. ROSS
 P. HORNBY

Tie Check
 6-18-79
 B Stephens
 D Stephens
 P Ross

ROLAND W. ANDERSON
 COUNTY SURVEYOR
 ANOKA COUNTY, MINNESOTA

TEMPERATURE CORRECTED
 AND HORIZONTALLY
 TAPED MEASUREMENTS

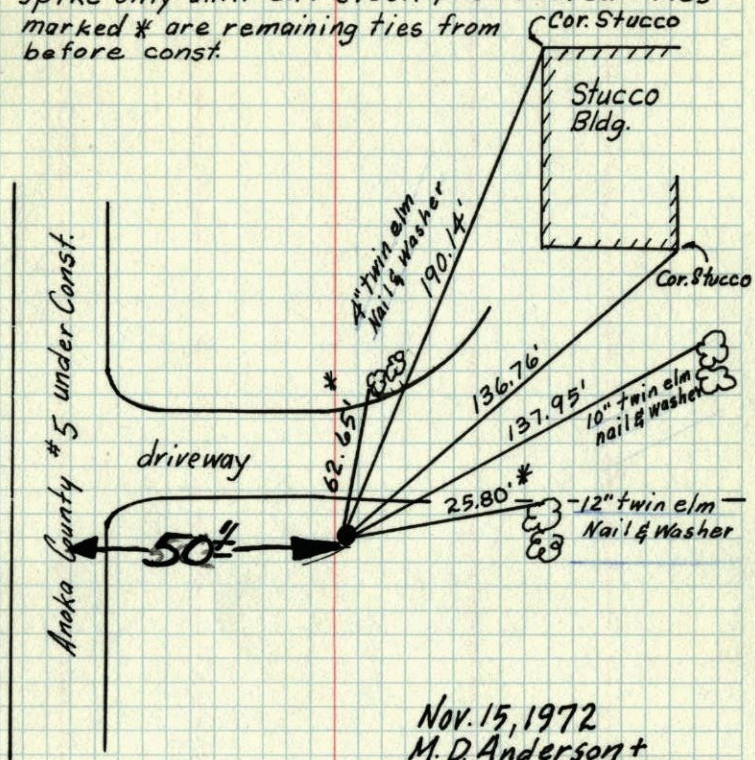
N¼ Cor. Sec. 10-T32-R25
 Reset Cast Iron Mon. from Const. ties
 Set steel sign & warning sign



July 31, 1973
 M. D. Anderson +
 H. J. Larson +
 temp. 70°
 tape # 12

N 1/4 Cor. Sec. 10, T. 32, R. 25

Spike only until dirt stock pile removed - ties marked * are remaining ties from before const.



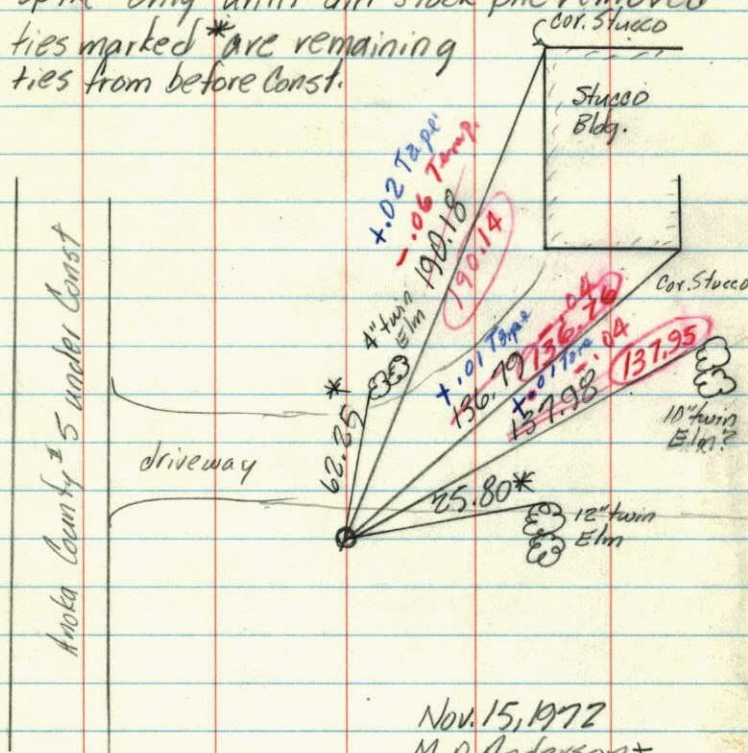
Nov. 15, 1972
M. D. Anderson +
H. J. Corson +

TEMPERATURE CORRECTED AND HORIZONTALLY TAPED MEASUREMENTS

ROLAND W. ANDERSON
COUNTY SURVEYOR
ANOKA COUNTY, MINNESOTA

N 1/4 Cor. Sec. 10- T32- R25

spike only until dirt stock pile removed
ties marked * are remaining
ties from before const.

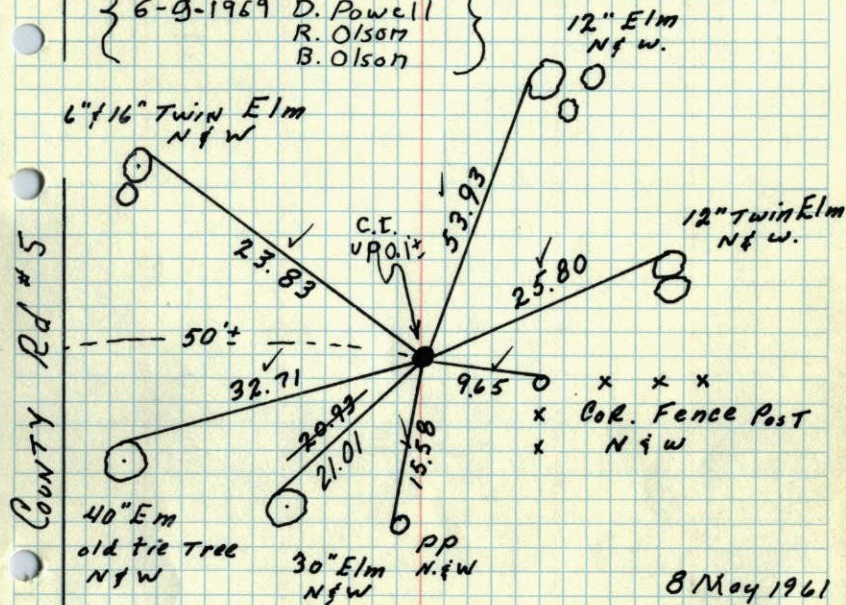


Nov. 15, 1972
M. D. Anderson +
H. J. Corson +
temp. 20°
tape # 12

do not correct ties
marked *

N 1/4 Cor. Sec 10-32-25 RAMSEY
FOUND 3/4" Iron from old tie Tree (1915)
Iron down 0.4'

{ Set cast iron mon.
6-9-1969 D. Powell
R. Olson
B. Olson }

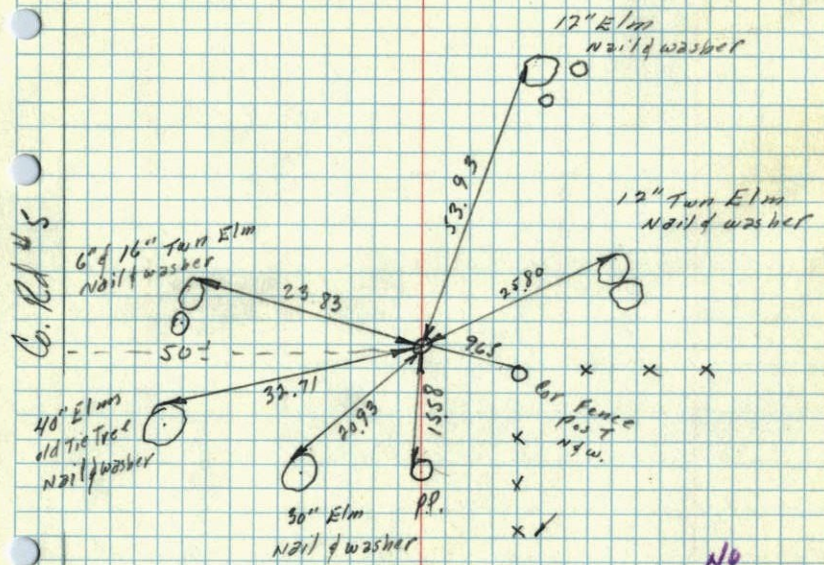


County Rd #5

8 May 1961
Freeman
Anderson
Retie 8/5/64
M. D. Anderson
R. Carlson

TEMPERATURE CORRECTED ROLAND W. ANDERSON
AND HORIZONTAL COUNTY SURVEYOR
TAPED MEASUREMENTS ANOKA COUNTY, MINNESOTA

N 1/4 Cor Sec 10.32.25 Ramsey
Found 3/4" iron pipe from old tie (1915)
Iron was said to be the Cor. By Farmers
living in area. Iron down 0.4'



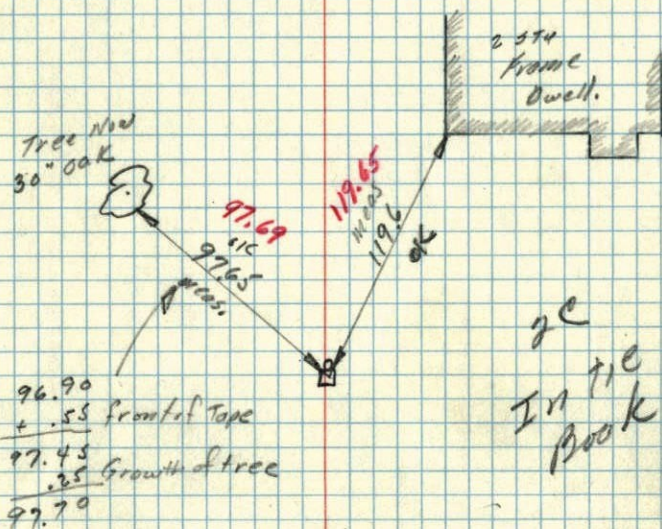
County Rd #5

No
Cor/Temp
0.17
Done

In Tie
Book

26 Jan 1961
Freeman-Anderson
+ 4°

N $\frac{1}{2}$ Cor. Sec 10. 32-23 (old ties from
Field Book 83 1948) Too check Cor. Men
in Place.



Temp. Corr. for
+ 4°

Old ties =

B.O. 24" N 40 $\frac{3}{4}$ " W 97.6

SW Cor. House N 16° E 119.6

Add these to one already in Book.