

# CERTIFICATE OF LOCATION OF GOVERNMENT CORNER

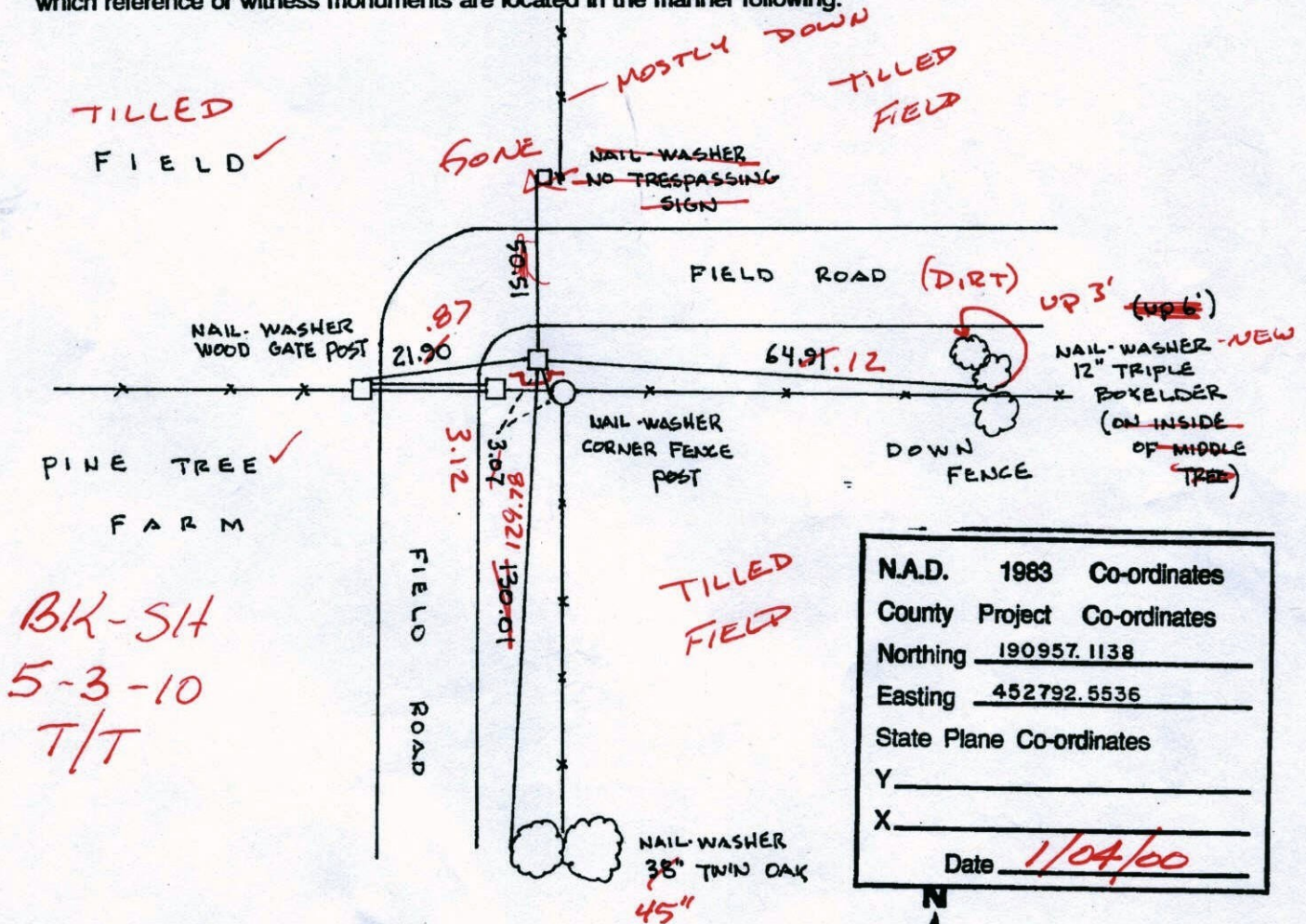
County of Anoka                      State of Minnesota

SOUTHEAST Corner of Sec. 4 Township 32 Range 25

I hereby certify that on the 29<sup>TH</sup> day of MARCH, 1961, I found the described corner which was evidenced by GRANITE MONUMENT

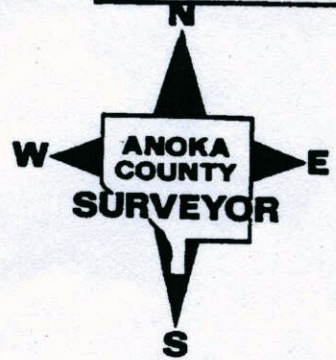
and I further certify that to perpetuate the location of said corner, I did, at the exact location thereof, place a permanent marker consisting of SAME (DOWN 0.8')

~~(~~THE~~ ~~SAME~~) SIGN POST ON SOUTH SIDE~~  
which reference or witness monuments are located in the manner following:



BK-SH  
5-3-10  
T/T

Revised date	Revised date	Revised date
8-11-82		
11-8-83		
7-18-85		
7-7-88		
8-23-93		
1-4-00		



# CERTIFICATE OF LOCATION OF GOVERNMENT CORNER

County of Anoka

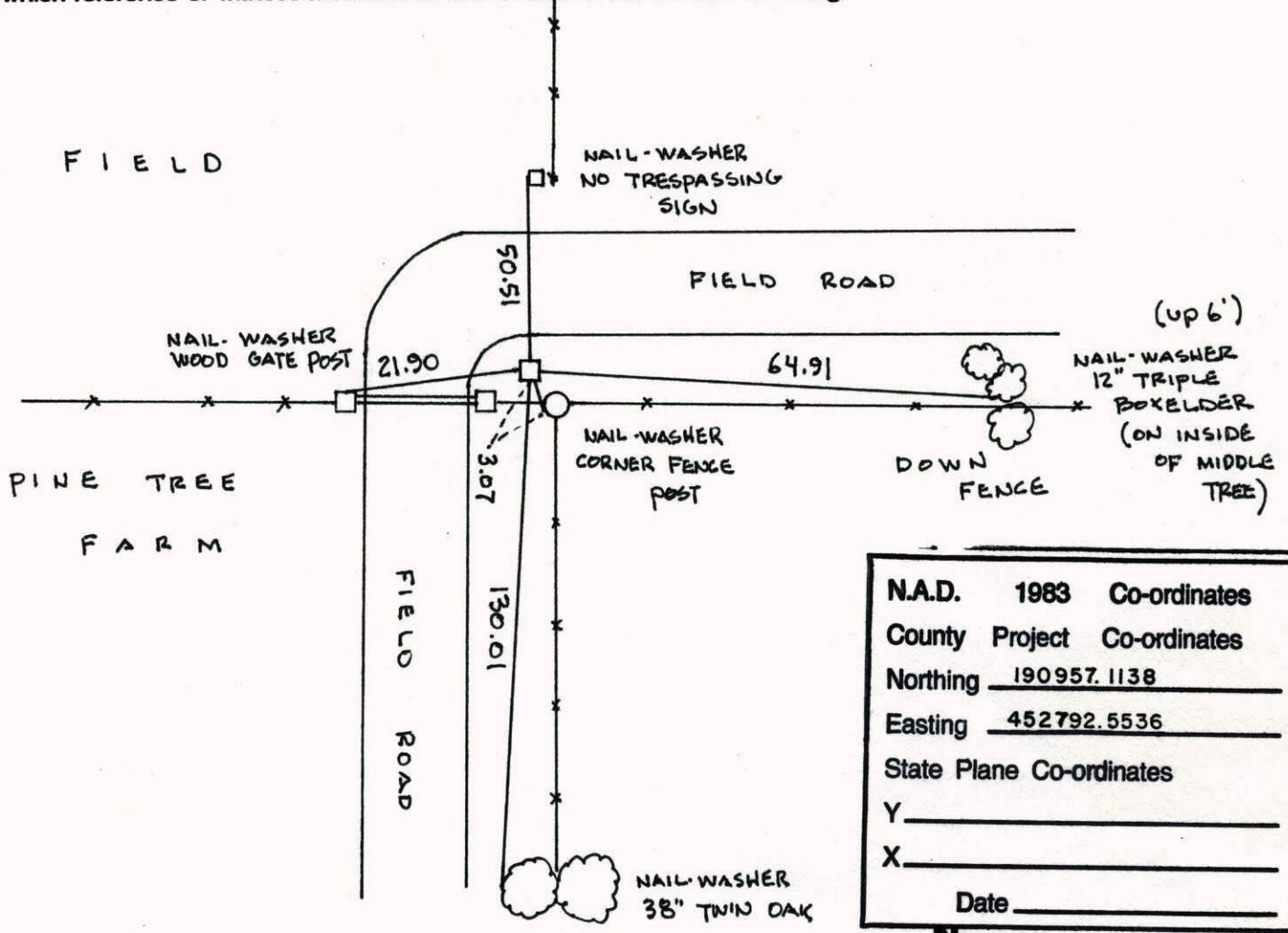
State of Minnesota

SOUTHEAST Corner of Sec. 4 Township 32 Range 25

I hereby certify that on the 29<sup>TH</sup> day of MARCH, 1961, I found the described corner which was evidenced by GRANITE MONUMENT

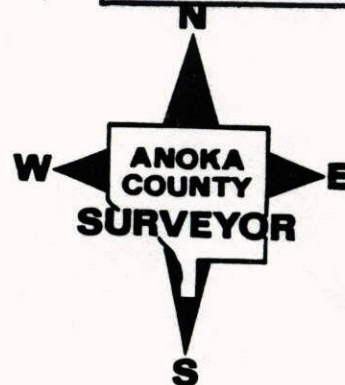
and I further certify that to perpetuate the location of said corner, I did, at the exact location thereof, place a permanent marker consisting of SAME

which reference or witness monuments are located in the manner following:



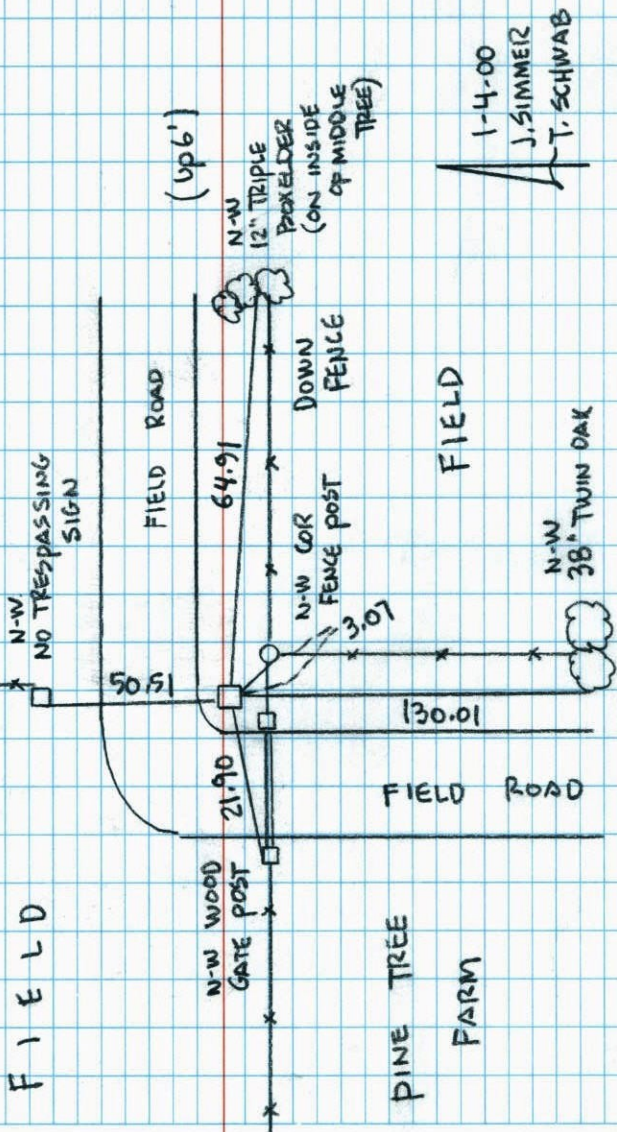
N.A.D.	1983	Co-ordinates
County	Project	Co-ordinates
Northing		<u>190957.1138</u>
Easting		<u>452792.5536</u>
State Plane Co-ordinates		
Y		_____
X		_____
Date		_____

Revised date	Revised date	Revised date
8-11-82		
11-8-83		
7-18-85		
7-7-88		
8-23-93		
1-4-00		



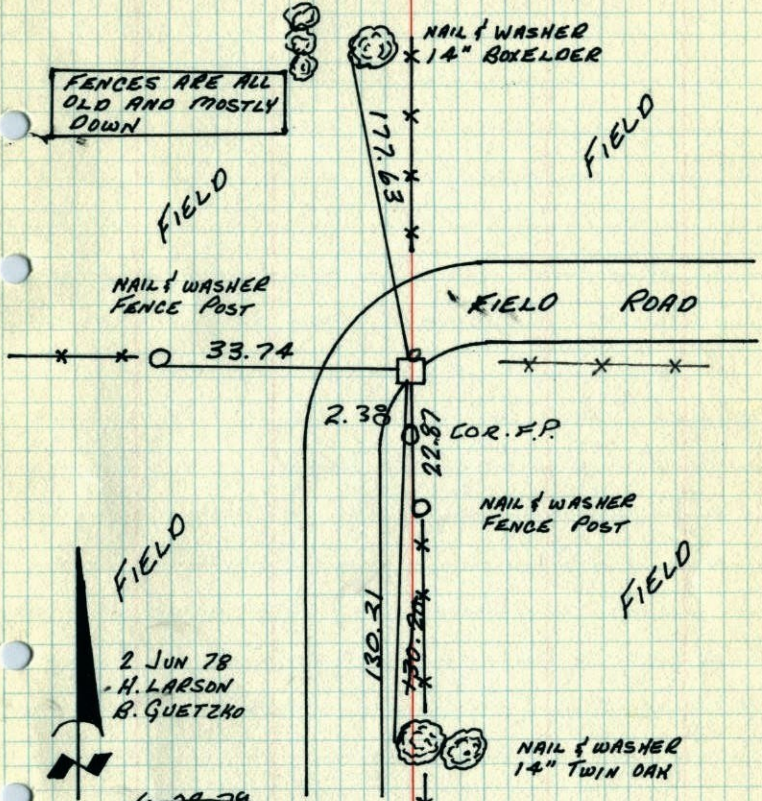
SOUTHEAST COR. SEC 4 T 32 R 25  
GPS & RETIED GRANITE MONUMENT

NATIONAL PRINTFAST NO. 446



S.E. COR. SECTION 4-T32-R25

~~RETIED GRANITE MONUMENT FOR FENCE CONSTRUCTION. IRON PIPE ON NORTH SIDE OF GRANITE FLUSH ON SOUTH EDGE OF FIELD ROAD.~~

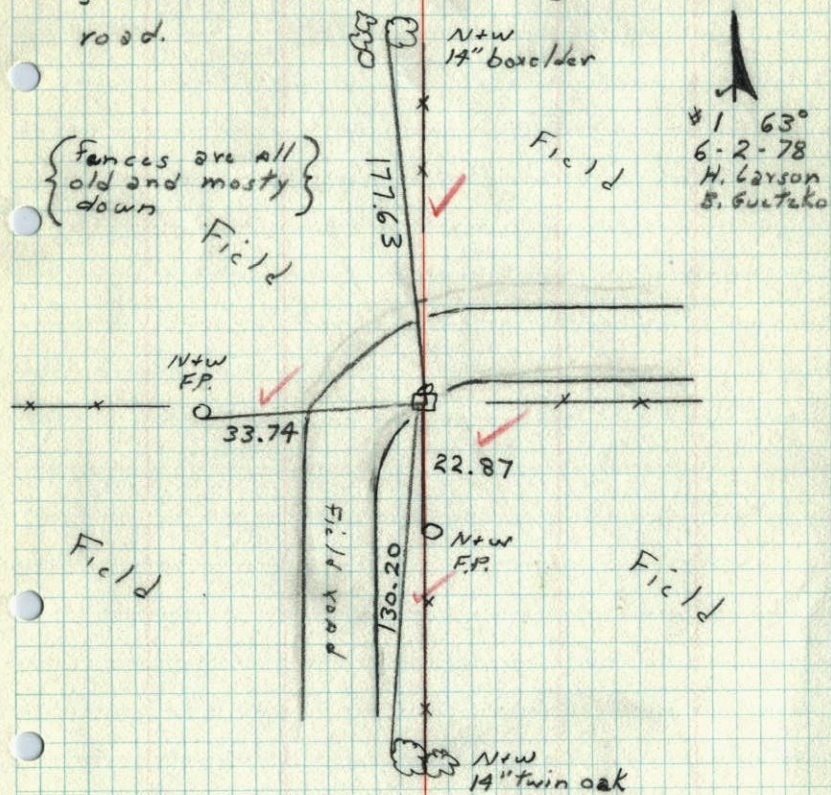


6-28-74 Replaced with C.I. monument down 5'  
 GRANITE STILL IN PLACE  
 7-15-80 H. LARSON D. NAGLAK  
 TIECHECK 8-11-82 P. ROSS P. HORNBY  
 TIC CHECK 6-28-79 B. STEPHENS D. ROSS

TEMPERATURE CORRECTED AND HORIZONTALLY TAPED MEASUREMENTS  
 ROLAND W. ANDERSON  
 COUNTY SURVEYOR  
 ANOKA COUNTY, MINNESOTA

SE Con Section 4 T32 R25

Retied granite monument for fence construction 1 p. on North side granite flush on South edge of Field road.



SE Cor. Sec. 4 - T32 - R25

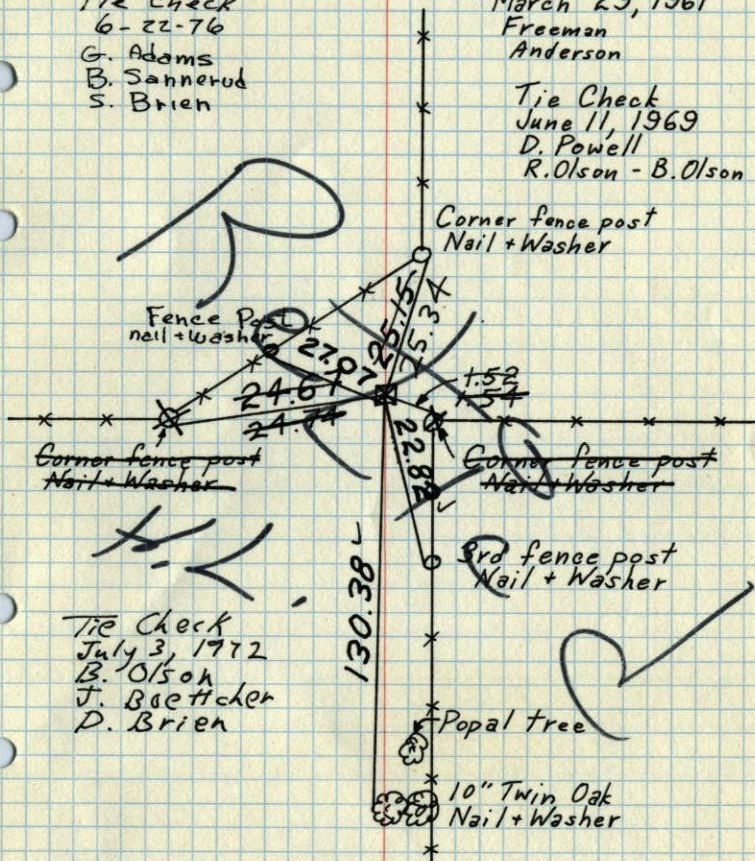
6"x6"x2' Granite Monument flush.

Iron Pipe on North Side.

Tie Check  
6-22-76  
G. Adams  
B. Sannerud  
S. Brien

March 29, 1961  
Freeman  
Anderson

Tie Check  
June 11, 1969  
D. Powell  
R. Olson - B. Olson

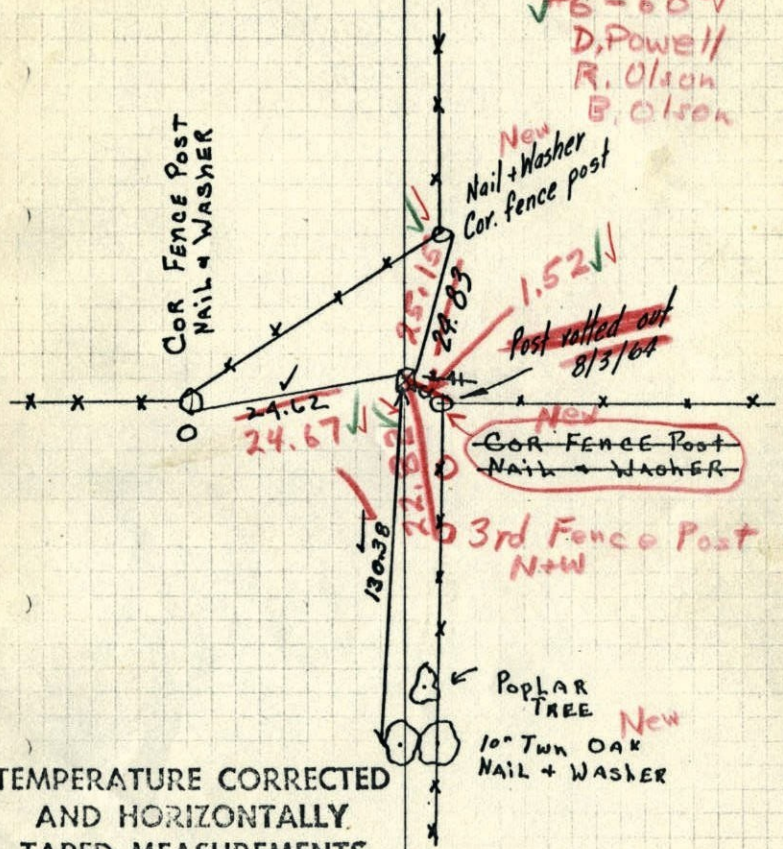


Tie Check  
July 3, 1972  
B. Olson  
J. Baettcher  
D. Brien

TEMPERATURE CORRECTED AND HORIZONTALLY TAPED MEASUREMENTS  
ROLAND W. ANDERSON  
COUNTY SURVEYOR  
ANOKA COUNTY, MINNESOTA

SE COR SEC 4-32-25 RAMSEY TWN  
Found 6"x6"x2' GRANITE Mon tipped E.  
dug hole AROUND it & STRAIGHTENED  
Reset flush with ground. SET 18" IRON  
on N. Edge of Mon.

6/11/69  
#6-600/  
D. Powell  
R. Olson  
B. Olson

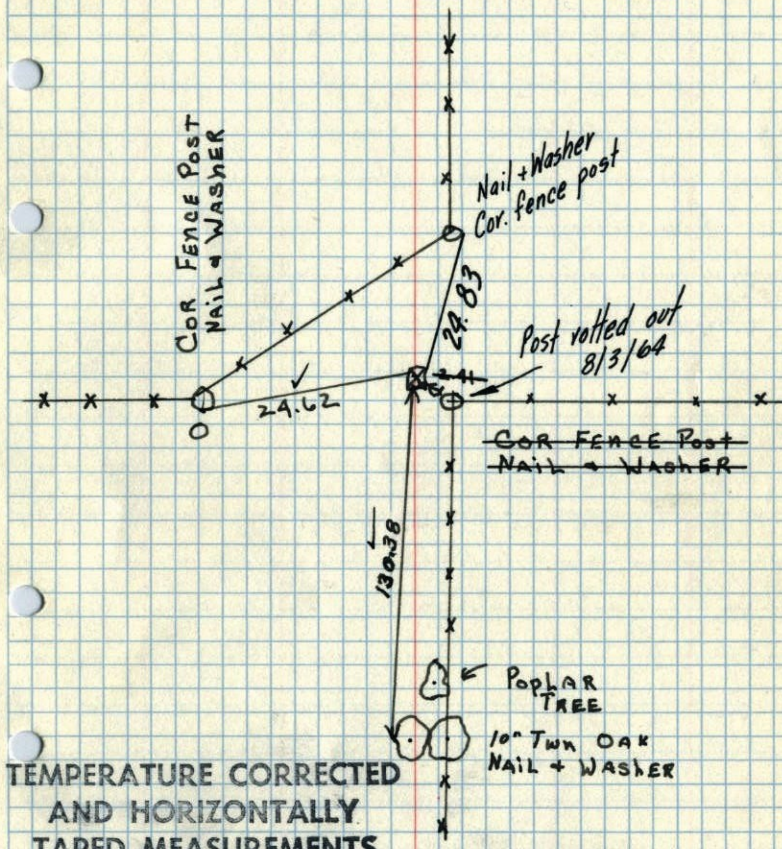


TEMPERATURE CORRECTED  
AND HORIZONTALLY  
TAPED MEASUREMENTS

Retie 8/3/64  
M. D. Anderson  
R. Carlson

3-29-61  
FREEMAN - ANDERSON  
TEMP CORR:  
ROLAND W. ANDERSON  
COUNTY SURVEYOR  
ANOKA COUNTY, MINNESOTA

SE COR SEC 4-32-25 RAMSEY TWN  
Found 6"x4"x2' GRANITE Mon tipped E.  
dug hole AROUND it & STRAIGHTENED  
Reset flush with ground. SET 18" IRON  
on N. Edge of Mon.



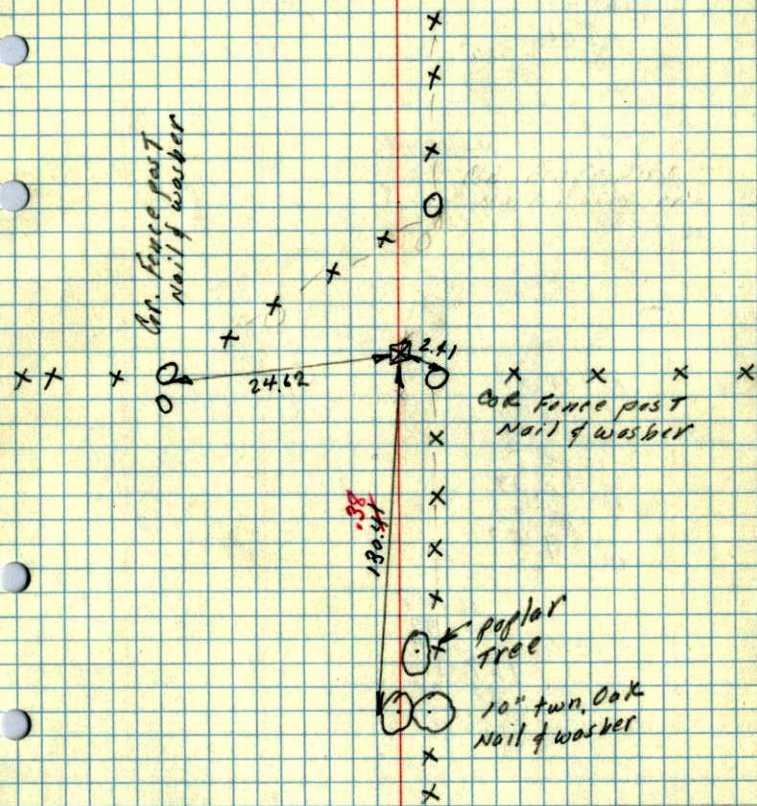
TEMPERATURE CORRECTED  
AND HORIZONTALLY  
TAPED MEASUREMENTS

Retie 8/3/64  
M. D. Anderson  
R. Carlson

3-29-61  
FREEMAN - ANDERSON  
TEMP CORR:  
ROLAND W. ANDERSON  
COUNTY SURVEYOR  
ANOKA COUNTY, MINNESOTA

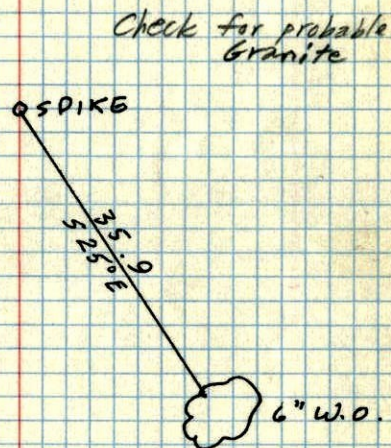
29 Mar 1961  
Freeman Anderson  
+35°

SE Cor. Sec 4. 32-25 Ramsey Twn.  
Found 6"x6"x2' Granite Mon. tipped E.  
dug hole around it & straightened.  
Reset flush with ground. Set 18" iron  
on N Edge of Mon.



Temp. Corr.

59  
SE CORNER OF SEC. 33, T 33, R 25 ✓



April 17, 1956  
A.C. Hwy. D.