

# CERTIFICATE OF LOCATION OF GOVERNMENT CORNER

County of Anoka

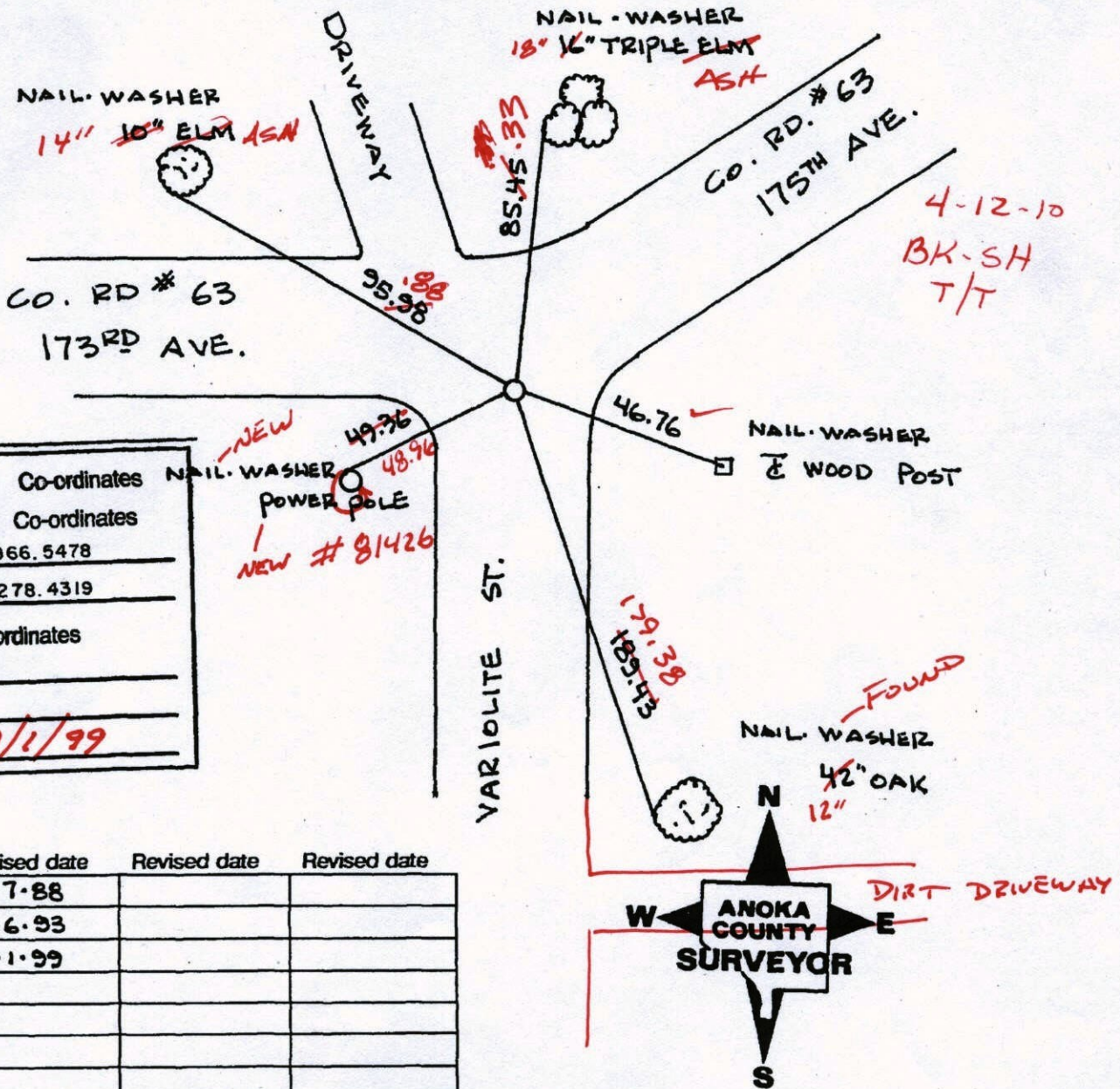
State of Minnesota

SOUTH QTR. Corner of Sec. 4 Township 32 Range 25

I hereby certify that on the 12<sup>TH</sup> day of MAY, 19 69, I found the described corner which was evidenced by AREA RESURVEY

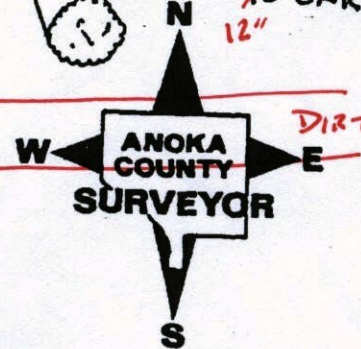
and I further certify that to perpetuate the location of said corner, I did, at the exact location thereof, place a permanent marker consisting of CAST IRON MONUMENT (FLUSH)

which reference or witness monuments are located in the manner following:



N.A.D.	1983	Co-ordinates
County	Project	Co-ordinates
Northing		<u>190966.5478</u>
Easting		<u>450278.4319</u>
State Plane Co-ordinates		
Y		_____
X		_____
Date		<u>9/1/99</u>

Revised date	Revised date	Revised date
<u>6-7-88</u>		
<u>8-6-93</u>		
<u>9-1-99</u>		



# CERTIFICATE OF LOCATION OF GOVERNMENT CORNER

County of Anoka

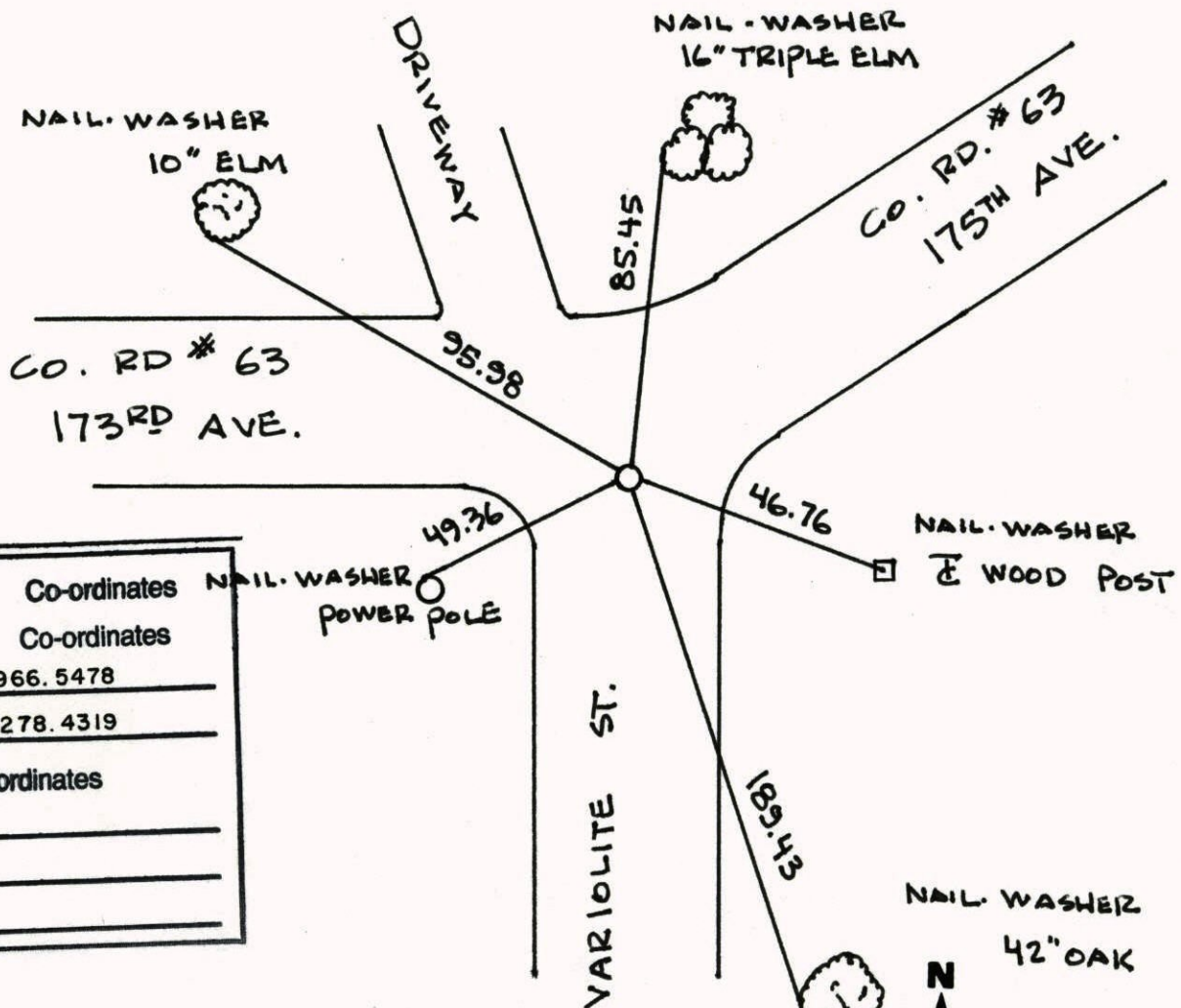
State of Minnesota

SOUTH QTR. Corner of Sec. 4 Township 32 Range 25

I hereby certify that on the 12<sup>TH</sup> day of MAY, 19 69, I found the described corner which was evidenced by AREA RESURVEY

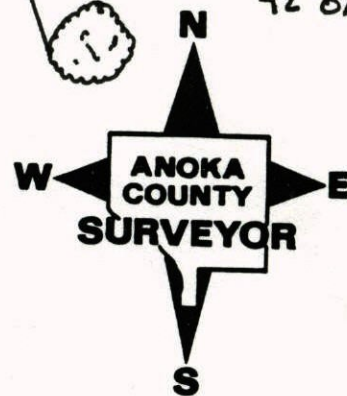
and I further certify that to perpetuate the location of said corner, I did, at the exact location thereof, place a permanent marker consisting of CAST IRON MONUMENT

which reference or witness monuments are located in the manner following:

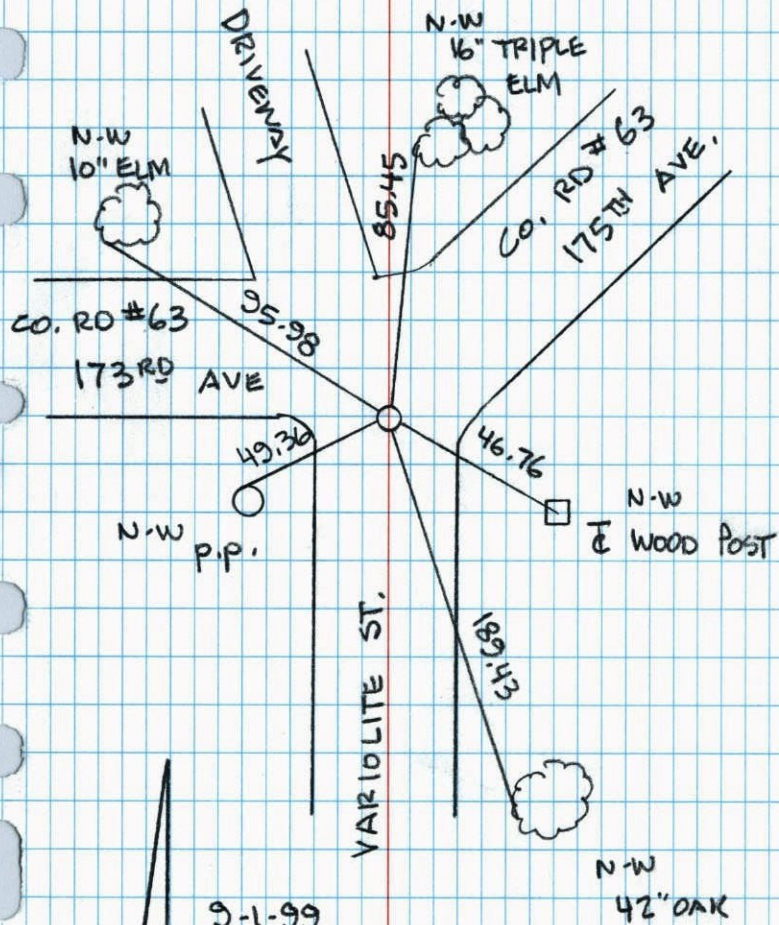


N.A.D.	1983	Co-ordinates
County	Project	Co-ordinates
Northing	<u>190966.5478</u>	
Easting	<u>450278.4319</u>	
State Plane Co-ordinates		
Y	_____	
X	_____	
Date	_____	

Revised date	Revised date	Revised date
<u>6-7-88</u>		
<u>8-6-93</u>		
<u>9-1-99</u>		

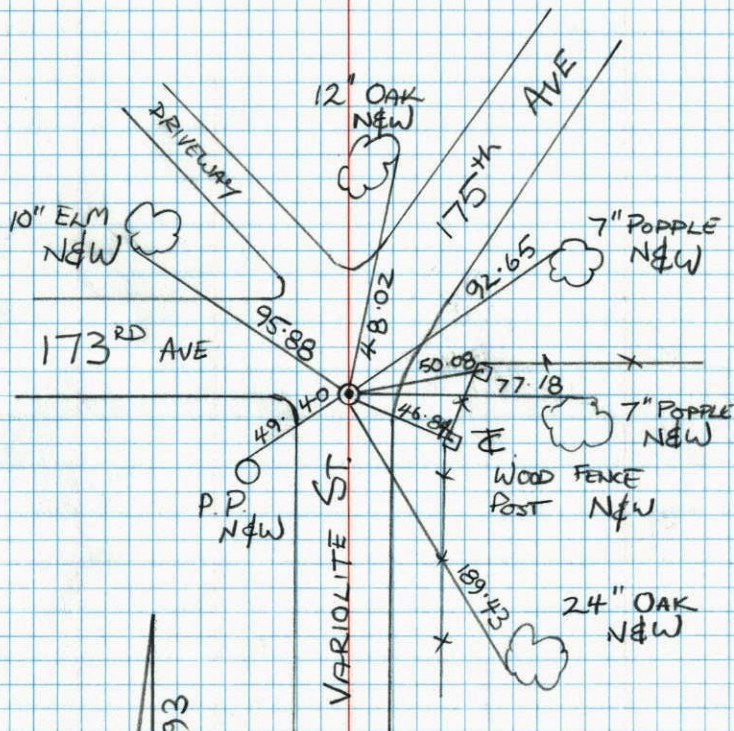


SOUTH 1/4 COR. SEC 4 T 32 R 25  
 REPLACED & RETIED BROKEN  
 CAST IRON MONUMENT



9-1-99  
 J. SIMMER  
 T. SCHWAB

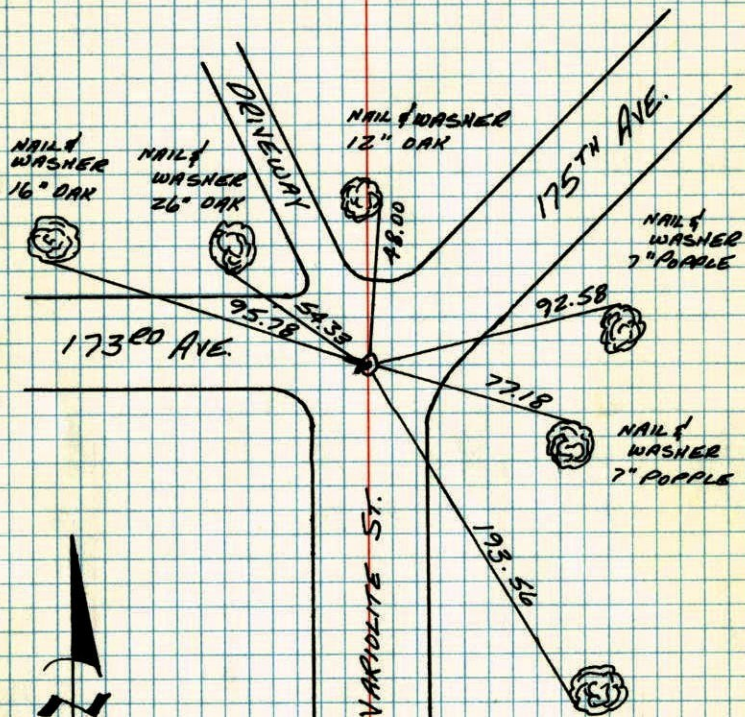
SOUTH 1/4 SEC 4 T 32 R 25  
 RETIE CAST IRON MONUMENT



JAMIE ANDERSON  
 JOSH ANDERSON

S<sup>1</sup>/<sub>4</sub> CORNER SECTION 4 - T32 - R25

RETIED CAST IRON MONUMENT FOR ROAD  
CONSTRUCTION. CAST IRON ORIGINALLY SET  
BY M.O. ANDERSON FROM AREA RESURVEY.



19 Jun 79  
B. STEPHENS  
D. STEPHENS  
P. ROSS

TIECHECK  
8-20-82  
P. ROSS  
P. HORNBY

NAIL &  
WASHER  
24\"/>

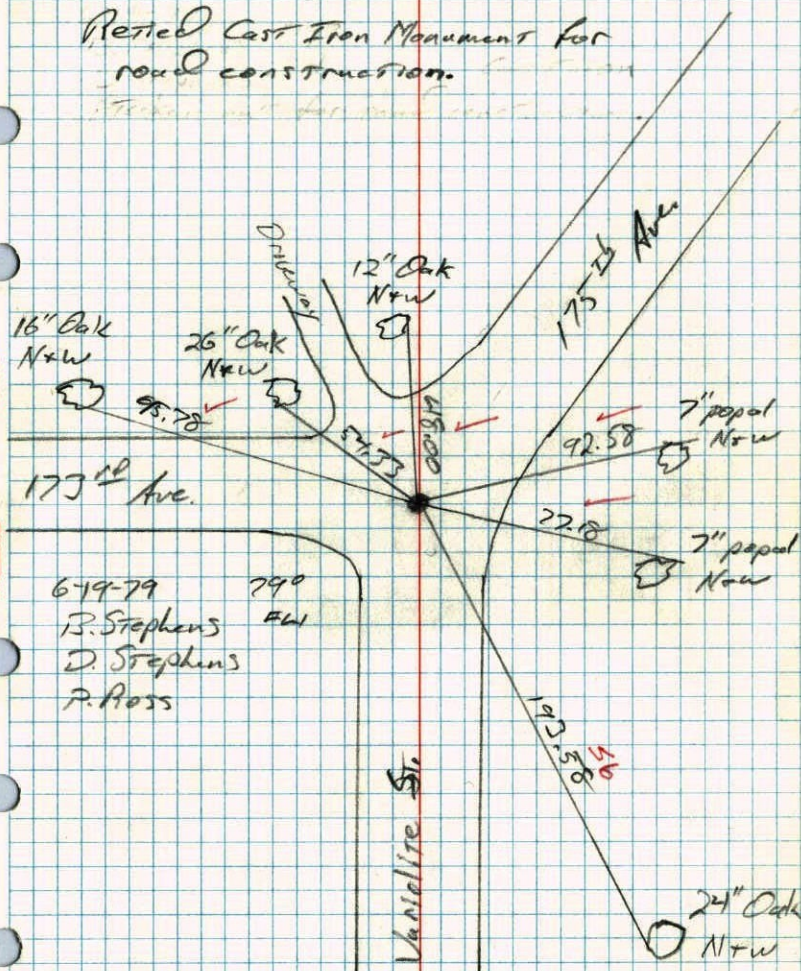
TEMPERATURE CORRECTED  
AND HORIZONTALLY  
TAPED MEASUREMENTS

ROLAND W. ANDERSON  
COUNTY SURVEYOR  
ANOKA COUNTY, MINNESOTA

S<sup>1</sup>/<sub>4</sub> Corner Section 4

T32 - R25

Retied Cast Iron Monument for  
road construction.

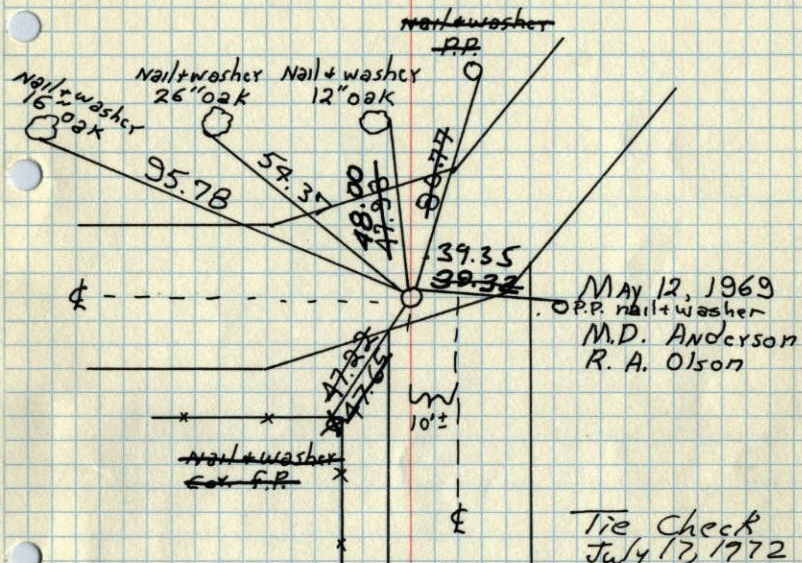


679-79 790  
B. Stephens RW  
D. Stephens  
P. Ross

24\"/>

## S 1/4 Cor. Sec. 4 T32 R25

Set cast iron monument from  
area resurvey. c.i. down 0.5'±



Tie Check  
July 17, 1972  
B. Olson  
J. Boettcher  
D. Brick

TEMPERATURE CORRECTED  
AND HORIZONTALLY  
TAPED MEASUREMENTS

Tie check  
6-18-79  
Stephens  
Stephens  
Ross

000

ROLAND W. ANDERSON  
COUNTY SURVEYOR  
ANOKA COUNTY, MINNESOTA

## S 1/4 Cor. Sec. 4 - T32 - R25

set cast iron monument down 0.5'±  
set from area resurvey

May 12, 1969  
M.D. Anderson  
R.A. Olson  
temp 50°  
tape 6

