

CERTIFICATE OF LOCATION OF GOVERNMENT CORNER

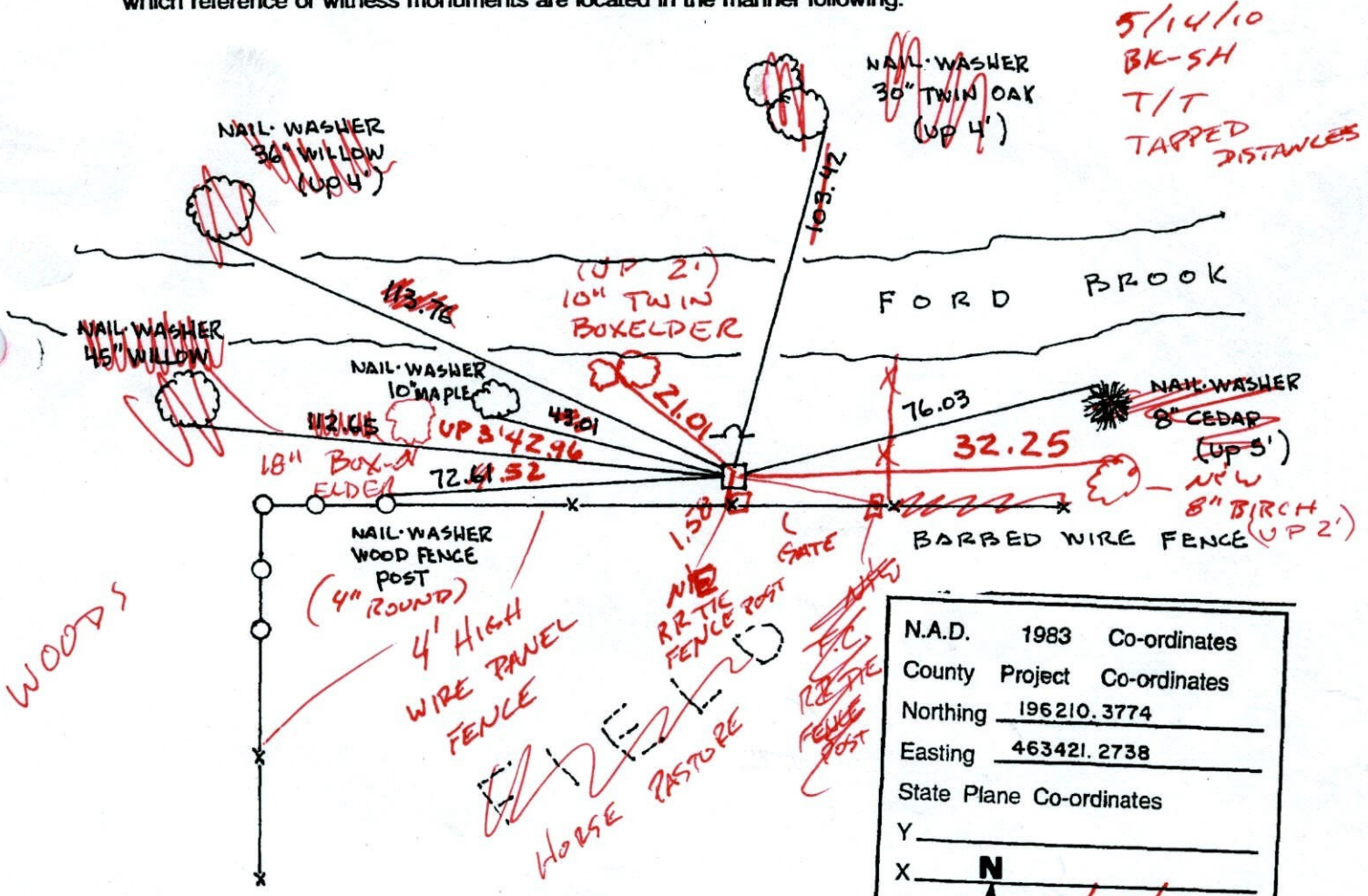
County of Anoka State of Minnesota

NORTHWEST Corner of Sec. 1 Township 32 Range 25

I hereby certify that on the 11TH day of AUGUST, 1960, I found the described corner which was evidenced by GRANITE MONUMENT WITH IRON PIPE ON THE SOUTH SIDE

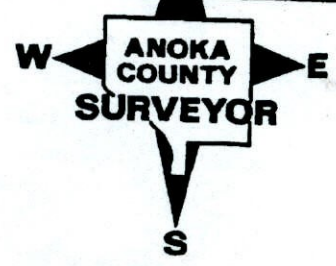
and I further certify that to perpetuate the location of said corner, I did, at the exact location thereof, place a permanent marker consisting of SAME WITH SIGN AND POST ON NORTH SIDE (DOWN 0.1')

which reference or witness monuments are located in the manner following:



N.A.D.	1983	Co-ordinates
County	Project	Co-ordinates
Northing	196210.3774	
Easting	463421.2738	
State Plane Co-ordinates		
Y	_____	
X	N	
Date	2/15/00	

Revised date	Revised date	Revised date
6-18-76		
6-21-79		
8-17-82		
11-10-83		
7-5-88		
8-16-93		
2-15-00		



CERTIFICATE OF LOCATION OF GOVERNMENT CORNER

County of Anoka

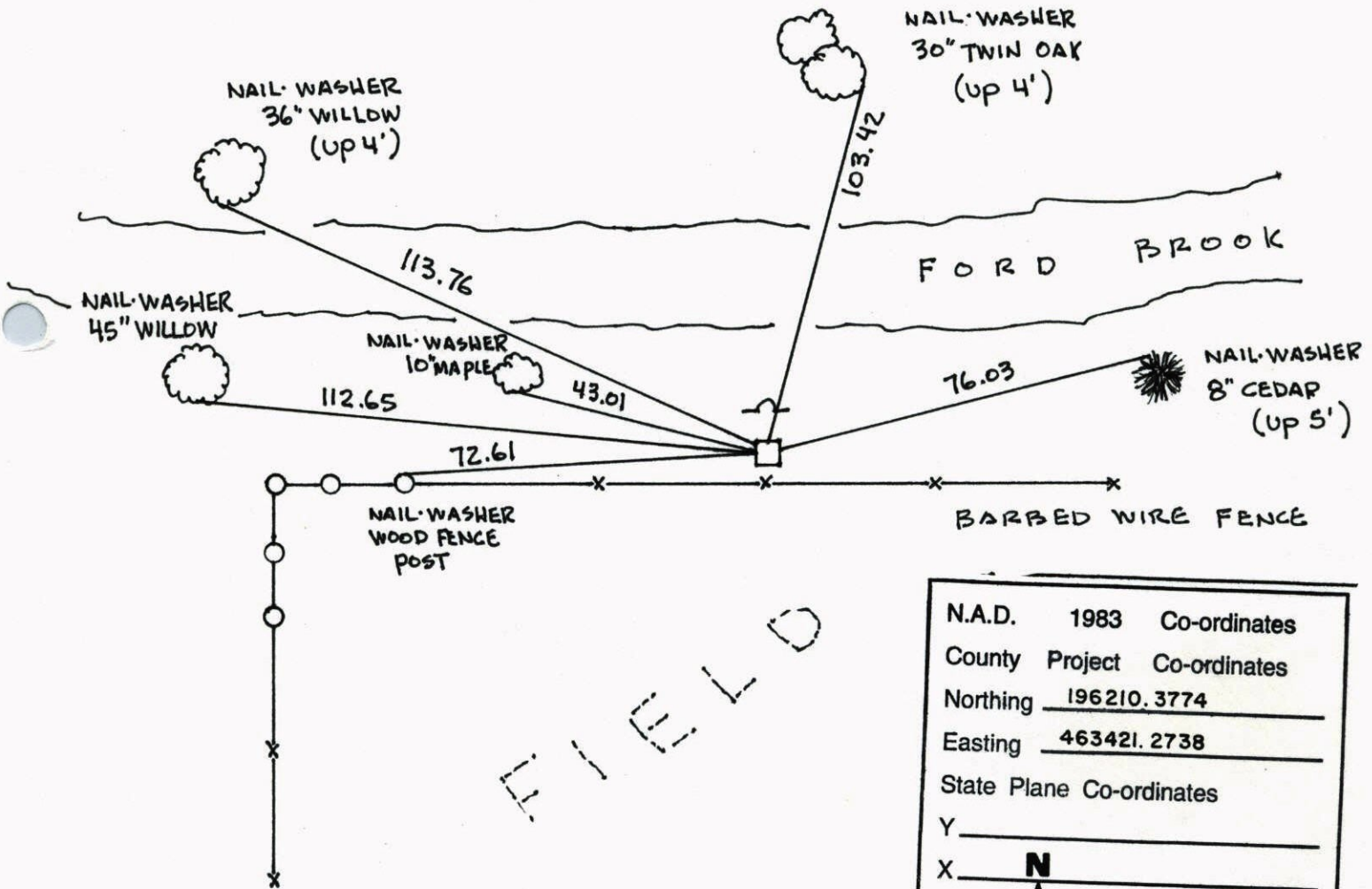
State of Minnesota

NORTHWEST Corner of Sec. 1 Township 32 Range 25

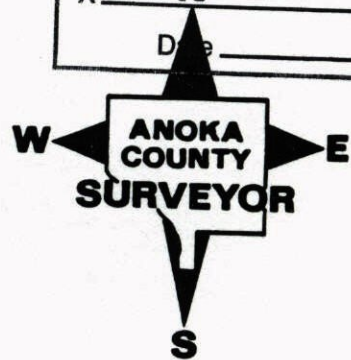
I hereby certify that on the 11TH day of AUGUST, 1960, I found the described corner which was evidenced by GRANITE MONUMENT WITH IRON PIPE ON THE SOUTH SIDE

and I further certify that to perpetuate the location of said corner, I did, at the exact location thereof, place a permanent marker consisting of SAME WITH SIGN AND POST ON NORTH SIDE

which reference or witness monuments are located in the manner following:

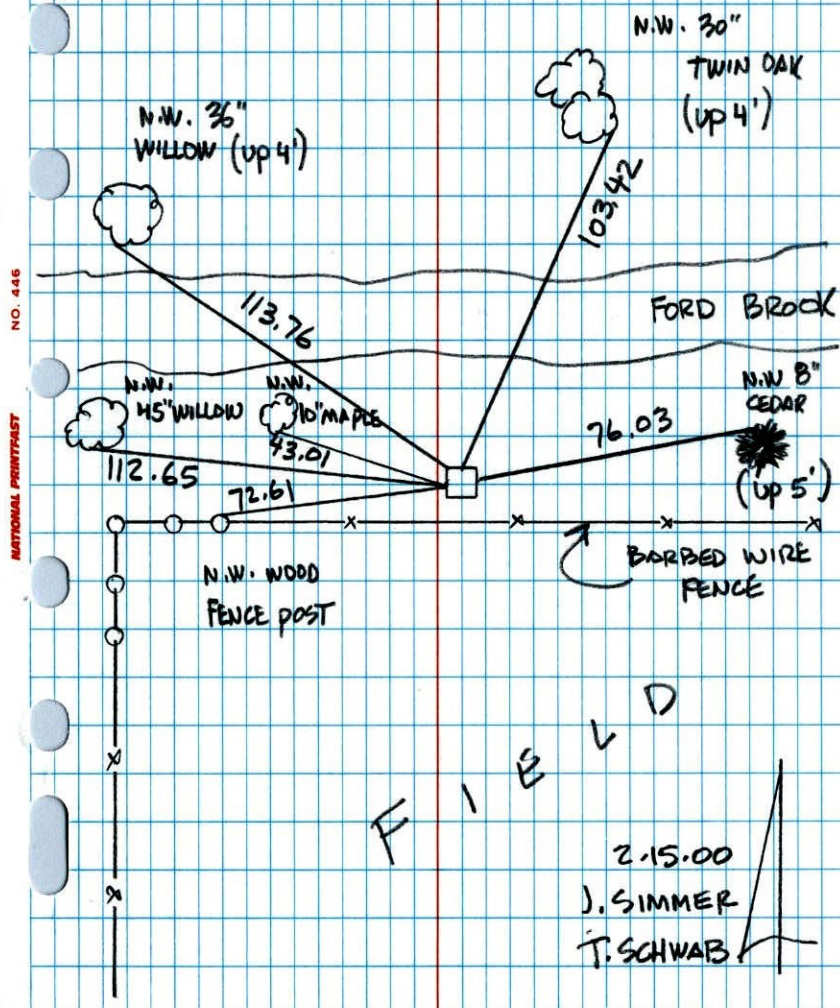


N.A.D.	1983	Co-ordinates
County	Project	Co-ordinates
Northing		<u>196210.3774</u>
Easting		<u>463421.2738</u>
State Plane Co-ordinates		
Y		_____
X		<u>N</u>
Date		_____

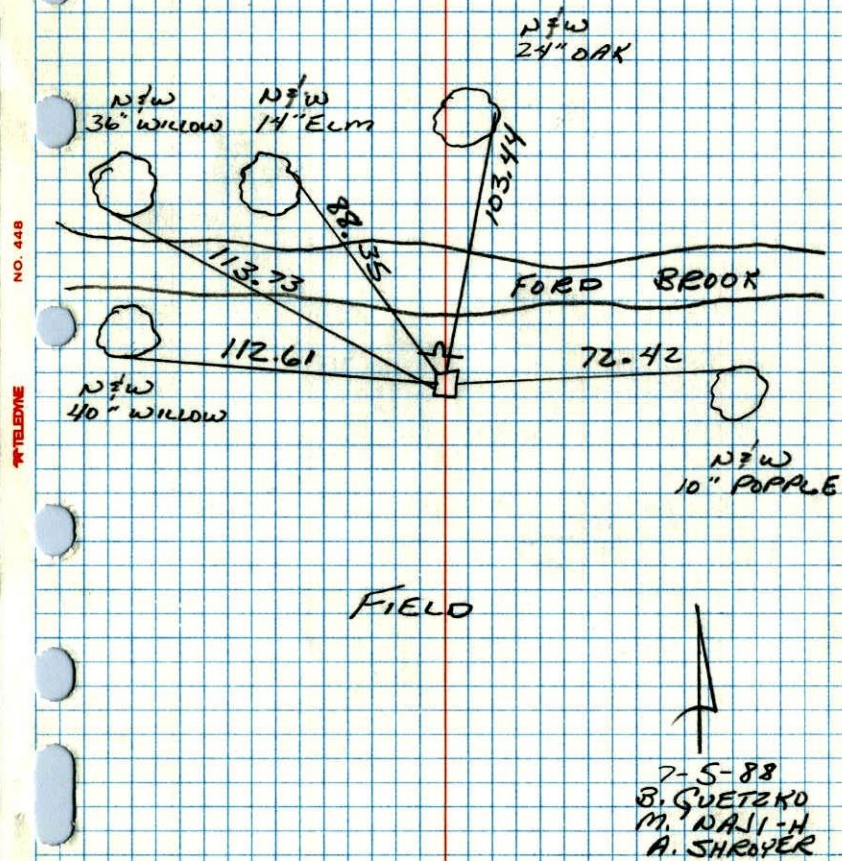


Revised date	Revised date	Revised date
<u>6-18-76</u>		
<u>6-21-79</u>		
<u>8-17-82</u>		
<u>11-10-83</u>		
<u>7-5-88</u>		
<u>8-16-93</u>		
<u>2-15-00</u>		

NORTHWEST COR. SEC 1 T32 R25
GPS & RETIED GRANITE MONUMENT



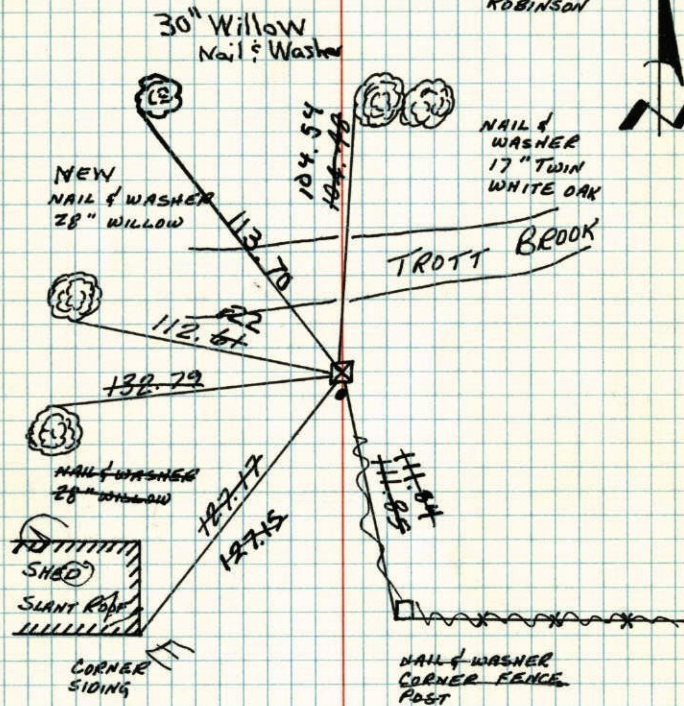
NW CORNER SEC 1 T32 R25
RETIED GRANITE MONUMENT,
THE TREES NORTH OF FORD BROOK
ARE DEAD OR DYING.



4
N.W. CORNER SECTION 1-T32-R25

GRANITE MONUMENT FLUSH. IRON PIPE ON SOUTH SIDE.

11 AUG 60
ROGERS
CARLSON
ROBINSON



TIE CHECK
18 JUN 76
G. ADAMS
S. BRIEN

TIE CHECK
8-17-82
P. ROSS
P. MORBY

Tie Check
6-21-79
DB Stephens
P Ross

Tie Check
7-30-85
D. ROSS
D. YOGEL
G. WIDMARK
#4, 75

TEMPERATURE CORRECTED
AND HORIZONTALLY
TAPED MEASUREMENTS

ROLAND W. ANDERSON
COUNTY SURVEYOR
ANOKA COUNTY, MINNESOTA

4
NW COR Sec 1-T32-R25

Granite Mon down & flush.

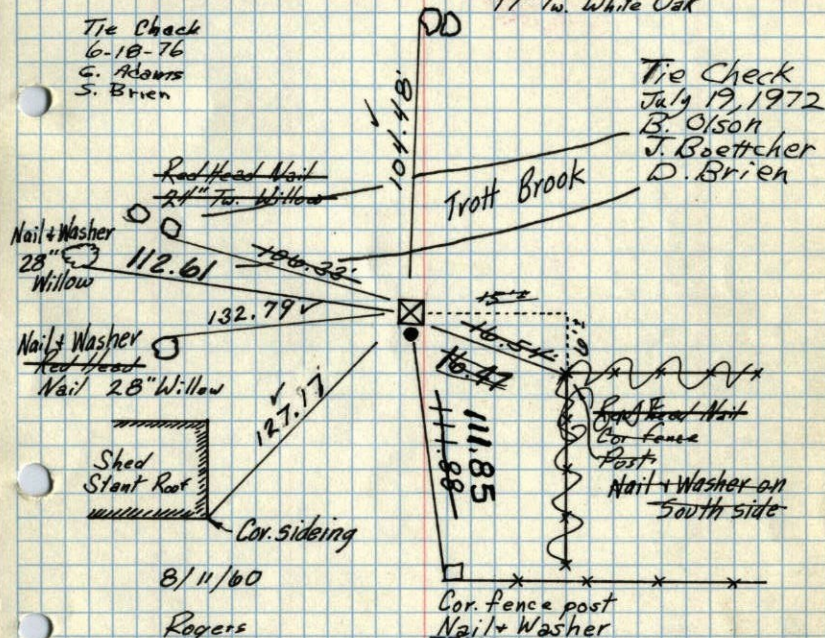
Iron Pipe on South

SEE NEW
TIE BOOK

Tie Check
June 9, 1969
D. Powell
R. Olson
B. Olson

Tie Check
6-18-76
G. ADAMS
S. BRIEN

REDRAWN
11 JAN 79
RMG
Nail + Washer
Red head Nail
17" Tw. White Oak



8/11/60
ROGERS
CARLSON
ROBINSON

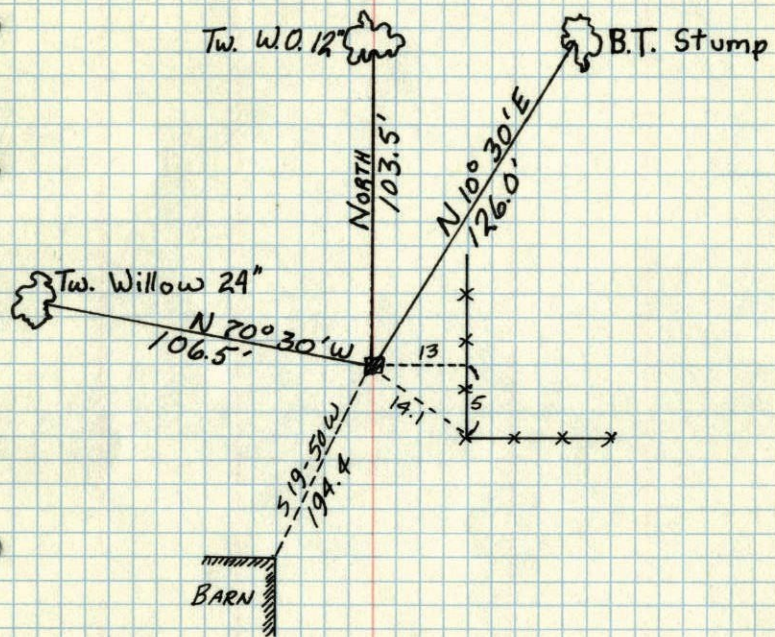
Retie 8/10/64
M. D. Anderson
J. Dunlop

TEMPERATURE CORRECTED
AND HORIZONTALLY
TAPED MEASUREMENTS

ROLAND W. ANDERSON
COUNTY SURVEYOR
ANOKA COUNTY, MINNESOTA

N.W. CORNER OF Sec. 1, T32, R25

GRANITE Down 6"



May 24, 1946
CARTWRIGHT