

CERTIFICATE OF LOCATION OF GOVERNMENT CORNER

County of Anoka

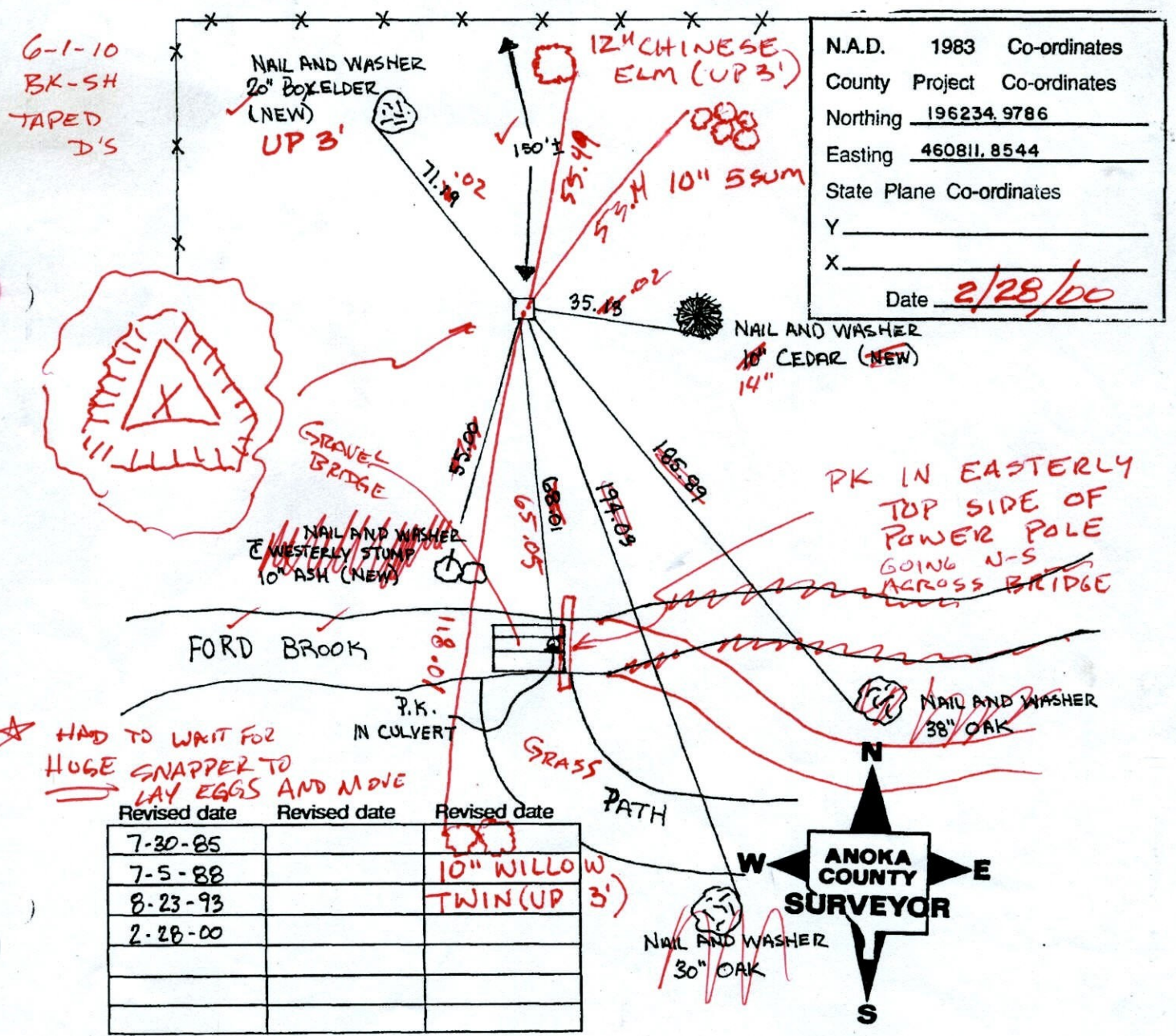
State of Minnesota

NORTH $\frac{1}{4}$ Corner of Sec. 2 Township 32 Range 25

I hereby certify that on the 12TH day of AUGUST, 19 60, I found the described corner which was evidenced by GRANITE MONUMENT WITH IRON PIPE ON NORTH SIDE

and I further certify that to perpetuate the location of said corner, I did, at the exact location thereof, place a permanent marker consisting of SAME (MONUMENT LEANING ~~NORTH~~ ^{SOUTH} - TIES TO LEANING POSITION) ~~MON.~~ INSIDE TIRE TRIANGLE (DOWN 0.3')

which reference or witness monuments are located in the manner following:



N.A.D.	1983	Co-ordinates
County	Project	Co-ordinates
Northing		<u>196234.9786</u>
Easting		<u>460811.8544</u>
State Plane Co-ordinates		
Y		_____
X		_____
Date <u>2/28/00</u>		

CERTIFICATE OF LOCATION OF GOVERNMENT CORNER

County of Anoka

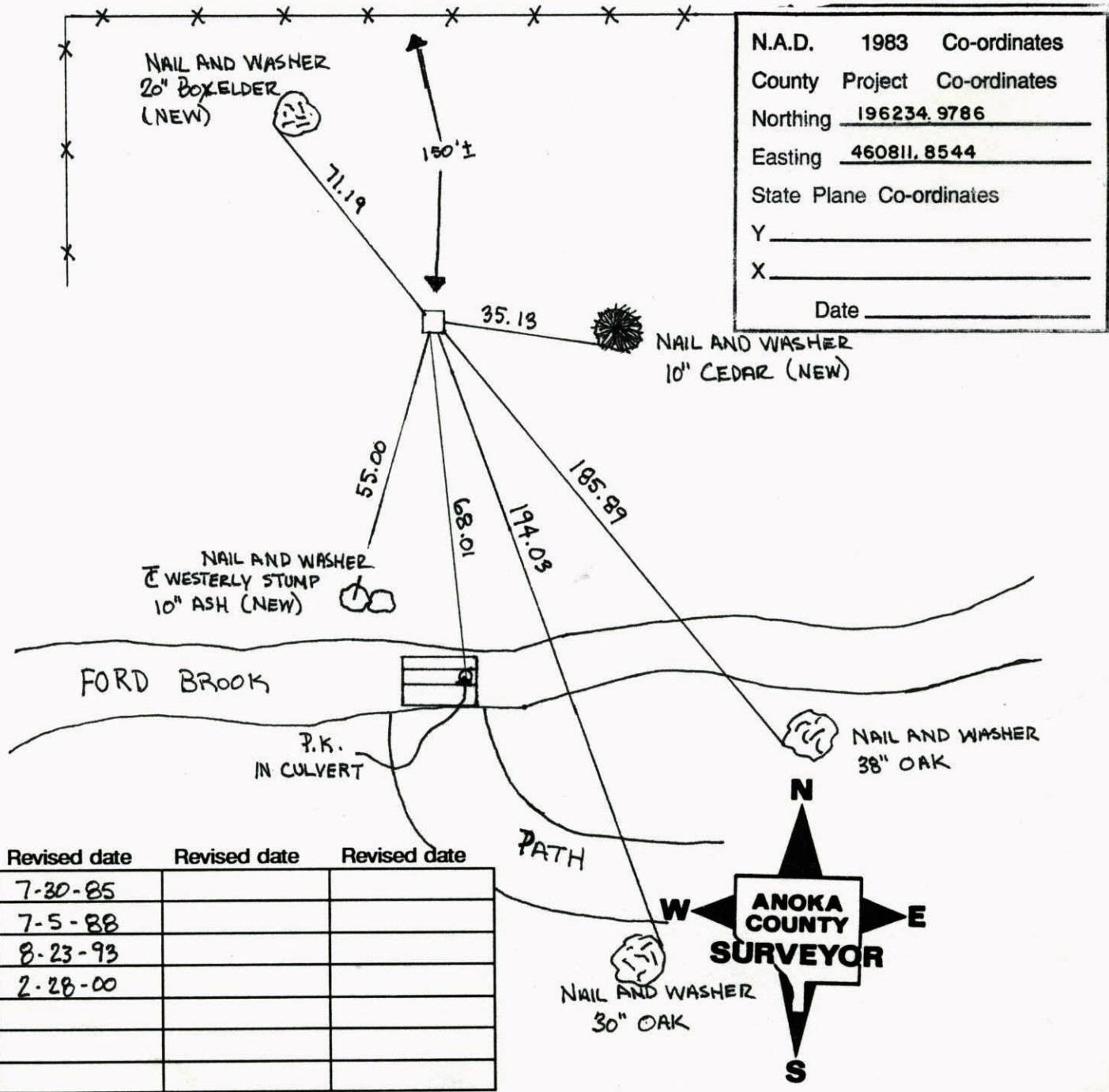
State of Minnesota

NORTH 1/4 Corner of Sec. 2 Township 32 Range 25

I hereby certify that on the 12TH day of AUGUST, 19 60, I found the described corner which was evidenced by GRANITE MONUMENT WITH IRON PIPE ON NORTH SIDE

and I further certify that to perpetuate the location of said corner, I did, at the exact location thereof, place a permanent marker consisting of SAME (MONUMENT LEANING NORTH - TIES TO LEANING POSITION)

which reference or witness monuments are located in the manner following:



Revised date	Revised date	Revised date
7-30-85		
7-5-88		
8-23-93		
2-28-00		

N¹/₄ Cor. Sec 2 - T32 - R25

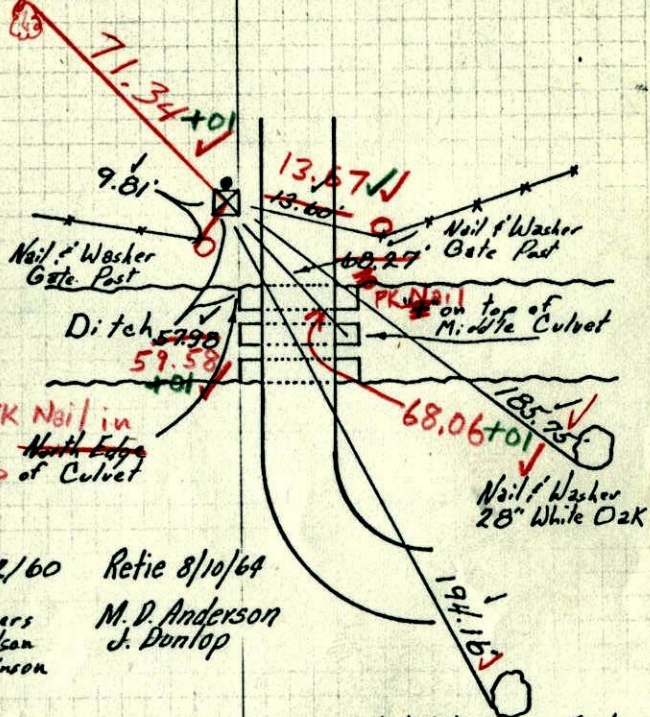
Granite Stone

Iron Pipe on North

6/9/69
#6 - 78°

D. Powell
R. Olson
B. Olson

4" Box Elder
N+W



8/12/60 Retie 8/10/64

Rogers
Carlson
Robinson
M. D. Anderson
J. Donlop

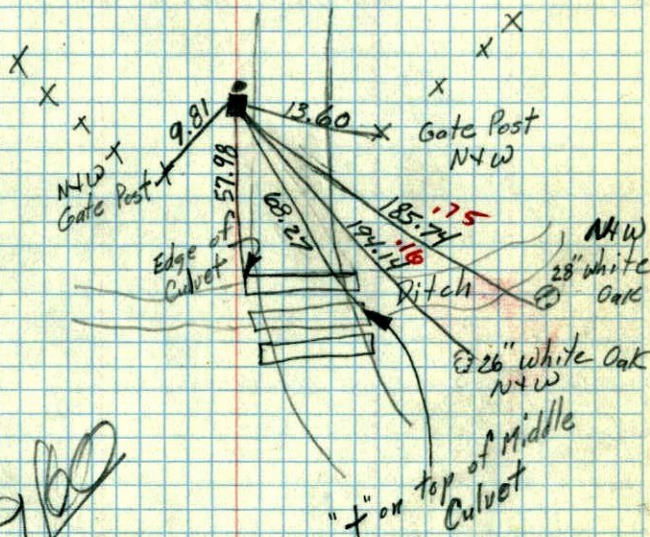
TEMPERATURE CORRECTED
AND HORIZONTALLY
TAPED MEASUREMENTS

ROLAND W. ANDERSON
COUNTY SURVEYOR
ANOKA COUNTY, MINNESOTA

N¹/₄ Cor. Sec. 2 T32 R25

Grante Stone flush

Iron Pipe on North



7/9/60

TC
Conf. 800
8/12/60
Bill Kogel's
Ralph Robinson
Randy Carlson

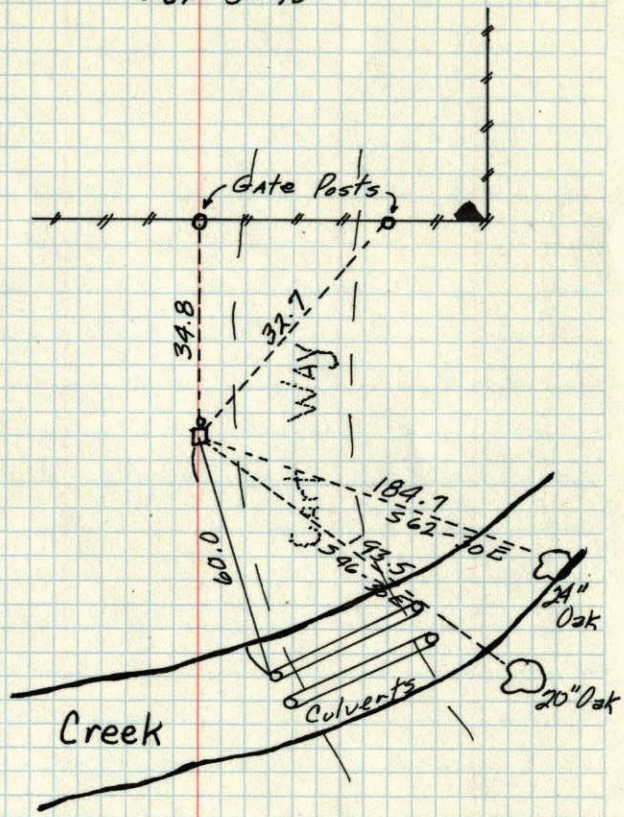
N 1/4 Sec 2, T 32, R 25

4

GRANITE

IP - N. side

Var 5° 40'



3/23/98
Jackson