

CERTIFICATE OF LOCATION OF GOVERNMENT CORNER

County of Anoka

State of Minnesota

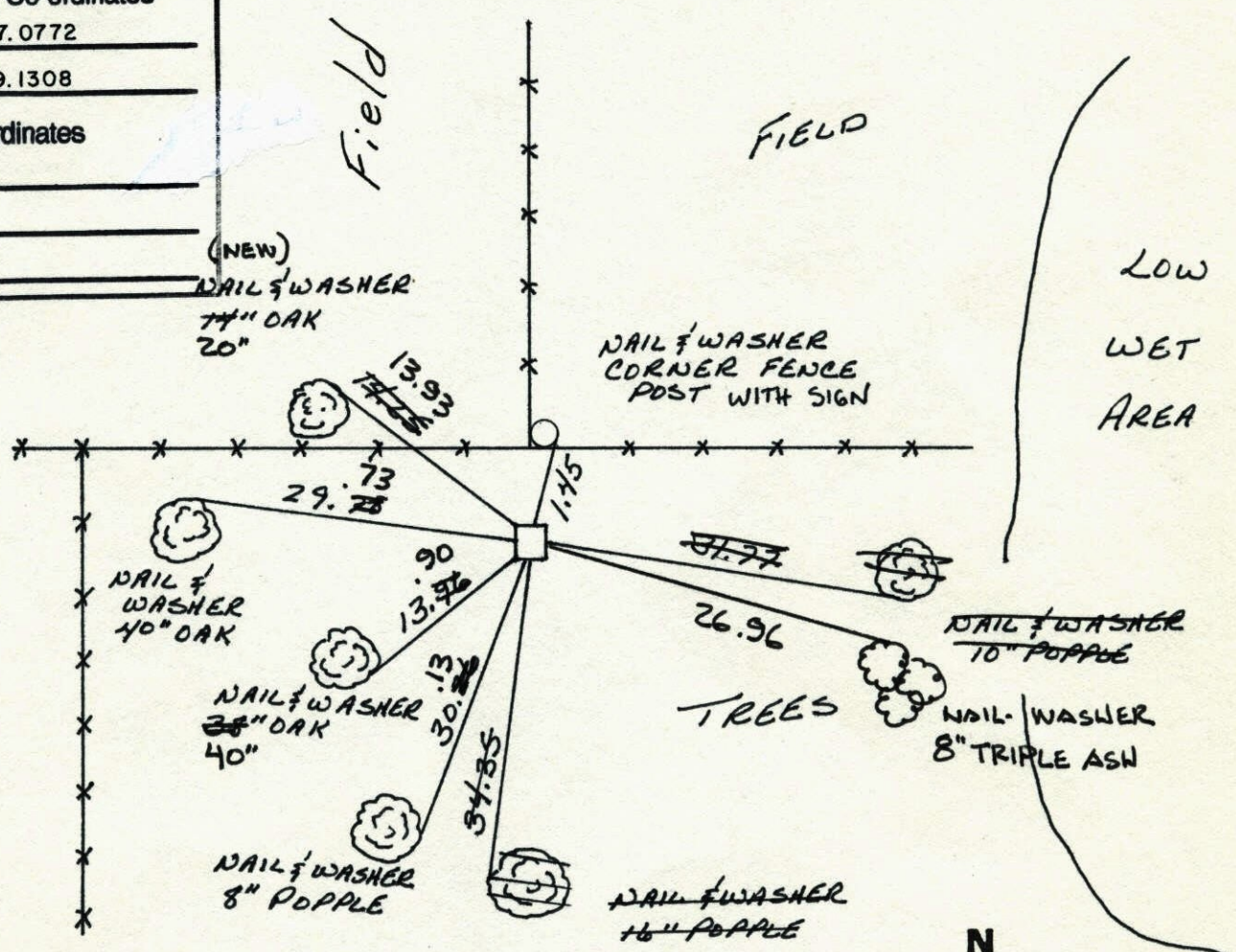
NORTH 1/4 Corner of Sec. 14 Township 32 Range 25

I hereby certify that on the 2ND day of SEPT., 1960, I found the described corner which was evidenced by CONCRETE MONUMENT

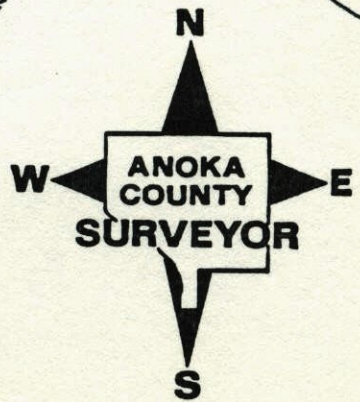
and I further certify that to perpetuate the location of said corner, I did, at the exact location thereof, place a permanent marker consisting of CONCRETE MONUMENT SIGN ON WOODEN POST 1.45' NORTH SIDE

which reference or witness monuments are located in the manner following:

N.A.D. 1983	Co-ordinates
County Project	Co-ordinates
Northing	185667.0772
Easting	460719.1308
State Plane Co-ordinates	
Y	
X	
Date	



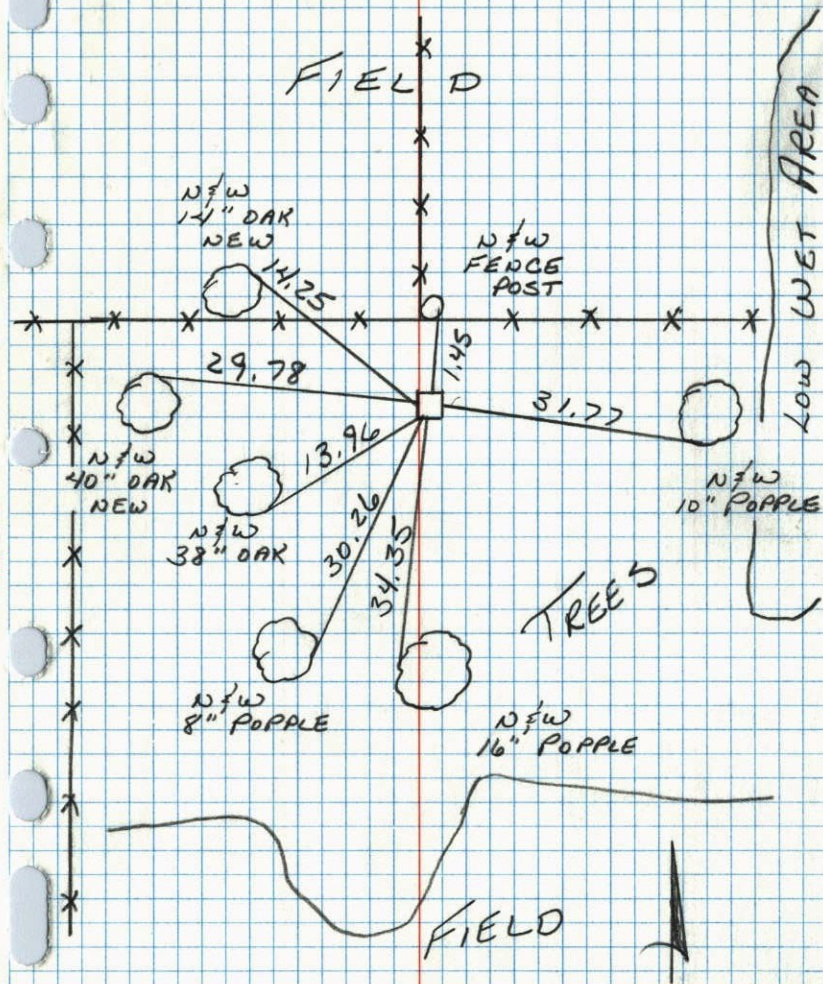
Revised date	Revised date	Revised date
8-23-82		
7-23-85		
7-12-88		
8-13-93		
3-27-00		



N¹/₄ CORNER SEC 14 T32 R25

RETIED CONCRETE MONUMENT.

MONUMENT DOWN 1'±.



7-12-88
B. GUETZKO
A. SHROYER
M. WALI-H
85° 200' TAPE

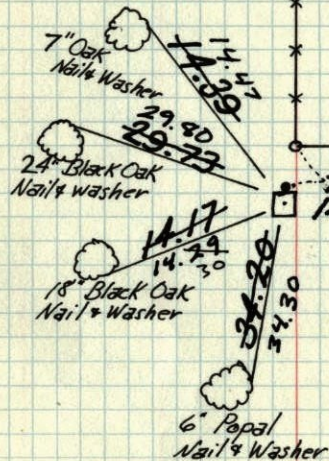
N¹/₄ Corn. Sec. 14-T32-R 25

Concrete Monument down 1.0'± Iron Pipe on North

T. Check
6/10/69
D. Powell
R. Olson
B. Olson

T. Check
8/21/72
B. Olson
J. Goettcher
R. Bauer

Tie Check
6-28-76
G. Adams
B. Samnerud
S. Brien



Nail & Washer on East side Cor.
fence Post

Tie Check
6-19-78
B. Stephens
D. Stephens
D. Ross

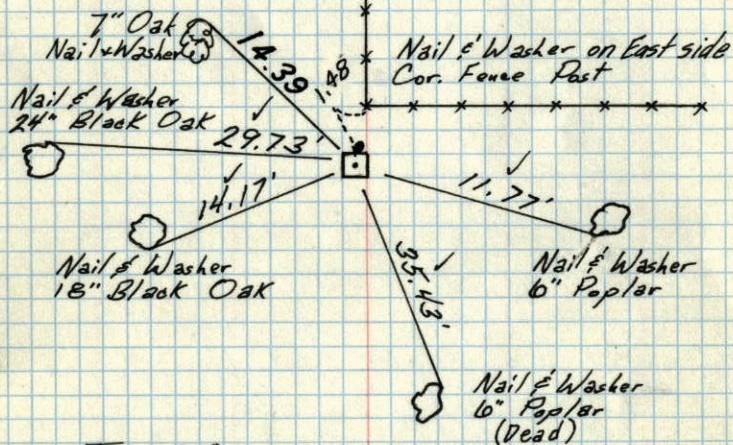
TIE CHECK
8-23-82
P. Ross
P. HORNBY

TEMPERATURE CORRECTED ROLAND W. ANDERSON
AND HORIZONTALLY COUNTY SURVEYOR
TAPED MEASUREMENTS ANOKA COUNTY, MINNESOTA

N¹/₄ Cor. Sec 14-T32-R25

Conc. Mon.
down 4"
Iron Pipe on North

Tie Check
June 10, 1969
D. Powell
R. Olson
B. Olson



Temp. 83°

9/2/60

Bill Rogers
Ralph Robinson

Retie 8/10/64

M. D. Anderson
J. Dunlop

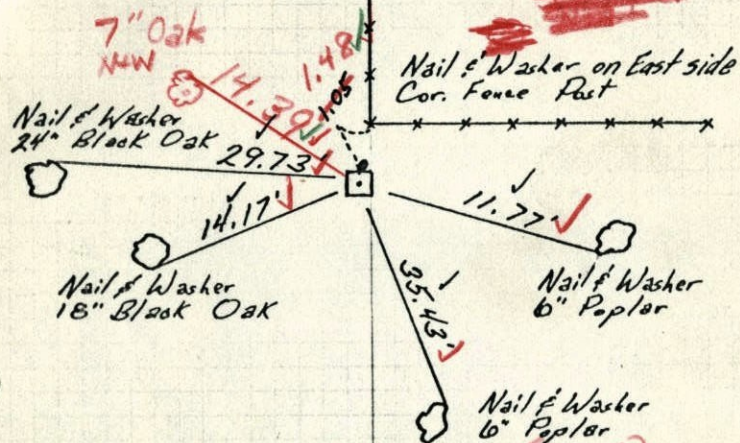
TEMPERATURE CORRECTED
AND HORIZONTALLY
TAPED MEASUREMENTS

ROLAND W. ANDERSON
COUNTY SURVEYOR
ANOKA COUNTY, MINNESOTA

N¹/₄ Cor. Sec 14-T32-R25

Conc. Mon.
down 4"
Iron Pipe on North

W/10/69
✓ #6-72°
D. Powell
R. Olson
B. Olson



Temp. 83°

9/2/60

Bill Rogers
Ralph Robinson

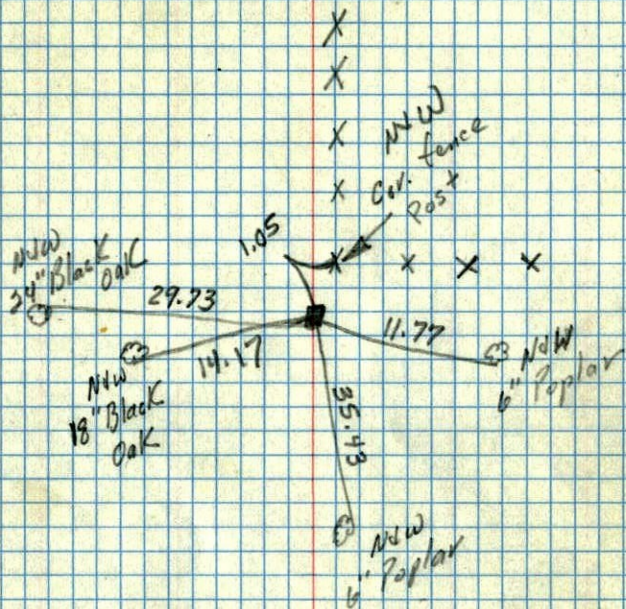
Retie 8/10/64

M. D. Anderson
J. Dunlop

TEMPERATURE CORRECTED
AND HORIZONTALLY
TAPED MEASUREMENTS

ROLAND W. ANDERSON
COUNTY SURVEYOR
ANOKA COUNTY, MINNESOTA

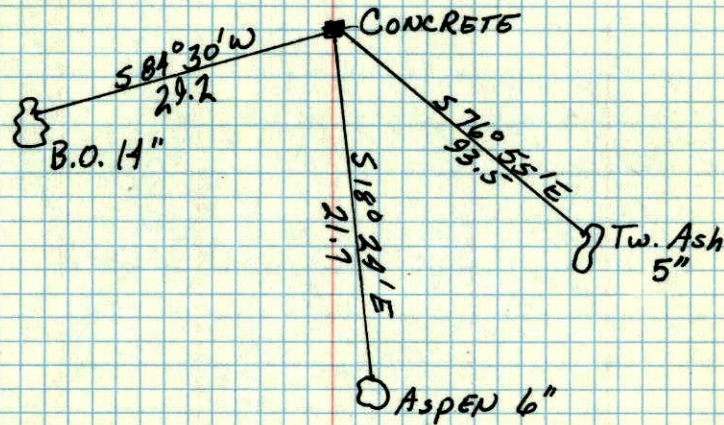
N¹/₄ Cor. Sec. 14 T32 R25
 Cont. Mon. diam 4"
 Iron Pipe on North



~~29/18/00~~

TC
 temp 83
 9/2/60
 Bill Rogers
 Ralph Robinson

N¹/₄ CORNER OF SEC. 14, T32, R 25
 CONCRETE MON.



MAY 25, 1945
 CARTWRIGHT