

CERTIFICATE OF LOCATION OF GOVERNMENT CORNER

County of Anoka State of Minnesota

NORTHEAST Corner of Sec. 3 Township 32 Range 25

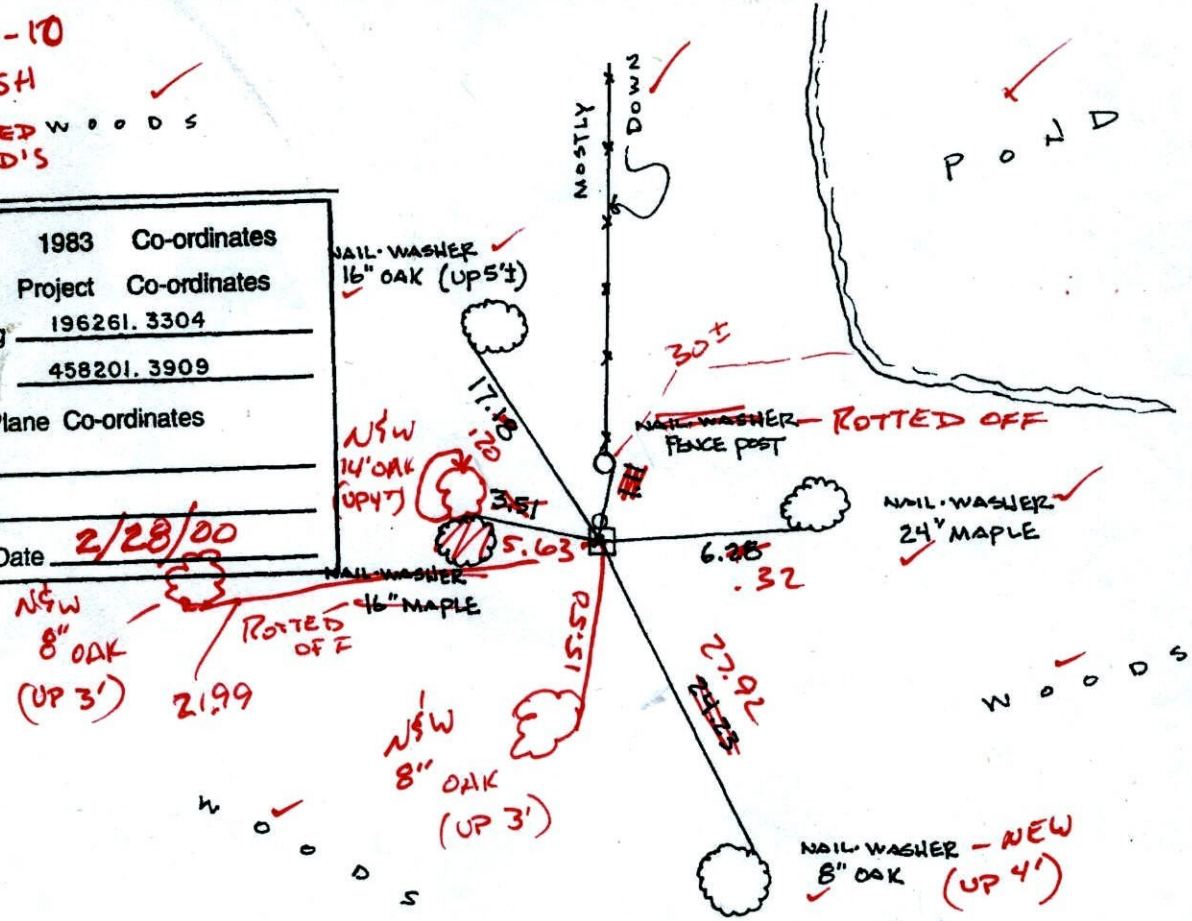
I hereby certify that on the 20TH day of JULY, 19 61, I found the described corner which was evidenced by GRANITE MONUMENT WITH 3/4" IRON PIPE ON THE NORTH SIDE

and I further certify that to perpetuate the location of said corner, I did, at the exact location thereof, place a permanent marker consisting of SAME ~~GRANITE MONUMENT~~ **NEEDS SIGN AND POST**

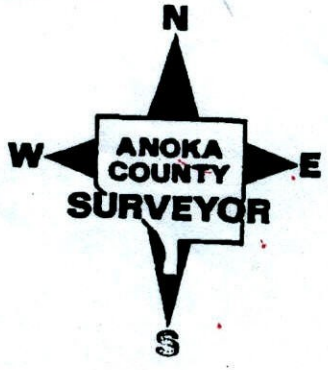
which reference or witness monuments are located in the manner following:

6-2-10
BK-SH ✓
TAPED WOODS
D'S

N.A.D.	1983	Co-ordinates
County	Project	Co-ordinates
Northing	196261.3304	
Easting	458201.3909	
State Plane Co-ordinates		
Y		
X		
Date	2/28/00	



Revised date	Revised date	Revised date
6-21-76		
6-27-79		
8-8-82		
7-31-85		
7-5-88		
8-23-93		
2-28-00		



CERTIFICATE OF LOCATION OF GOVERNMENT CORNER

County of Anoka

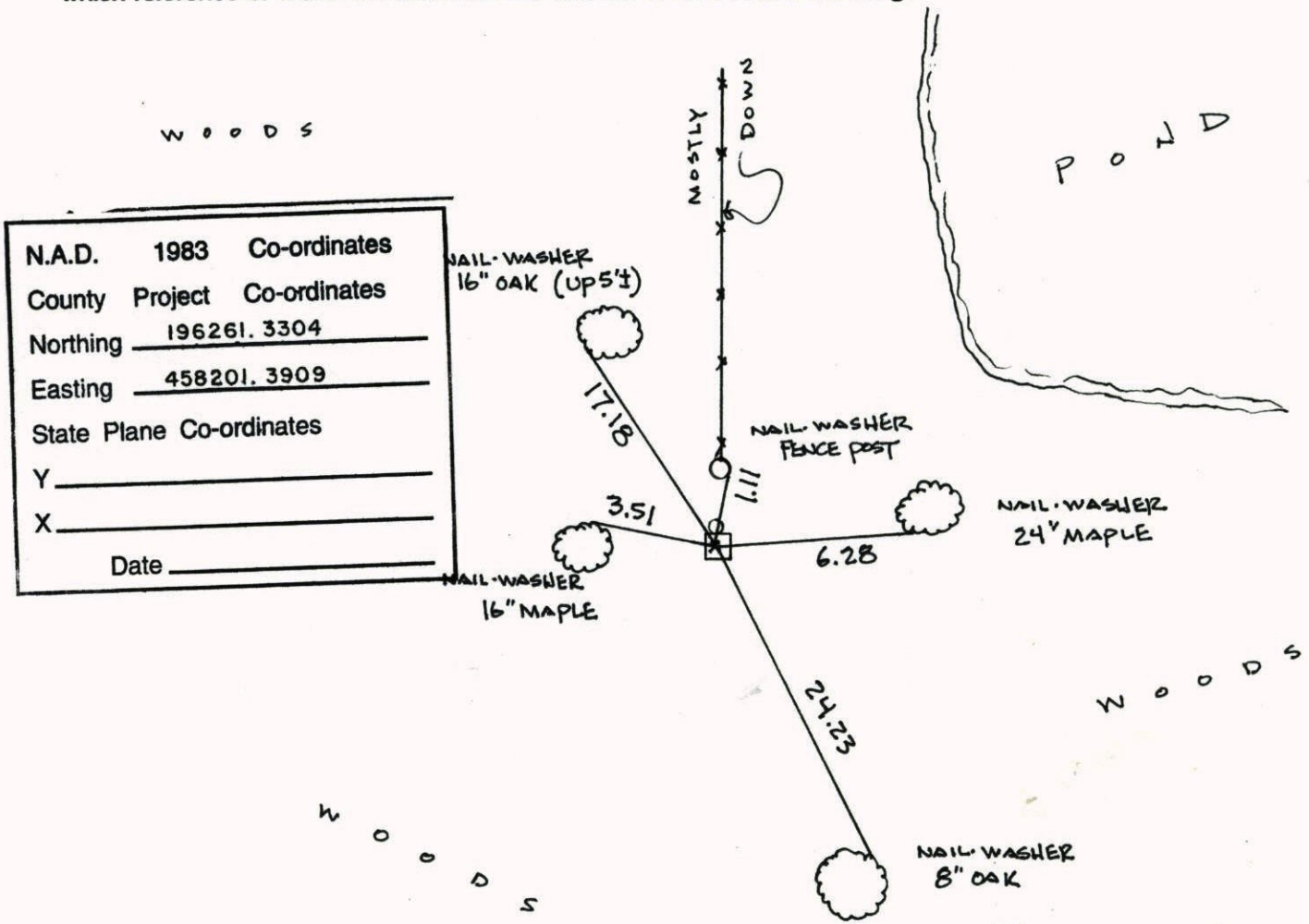
State of Minnesota

NORTHEAST Corner of Sec. 3 Township 32 Range 25

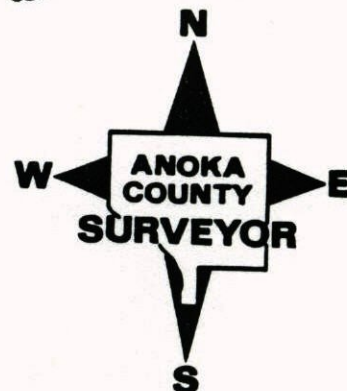
I hereby certify that on the 20TH day of JULY, 1961, I found the described corner which was evidenced by GRANITE MONUMENT WITH 3/4" IRON PIPE ON THE NORTH SIDE

and I further certify that to perpetuate the location of said corner, I did, at the exact location thereof, place a permanent marker consisting of S A M E

which reference or witness monuments are located in the manner following:



Revised date	Revised date	Revised date
6-21-76		
6-27-79		
8-8-82		
7-31-85		
7-5-88		
8-23-93		
2-28-00		



13

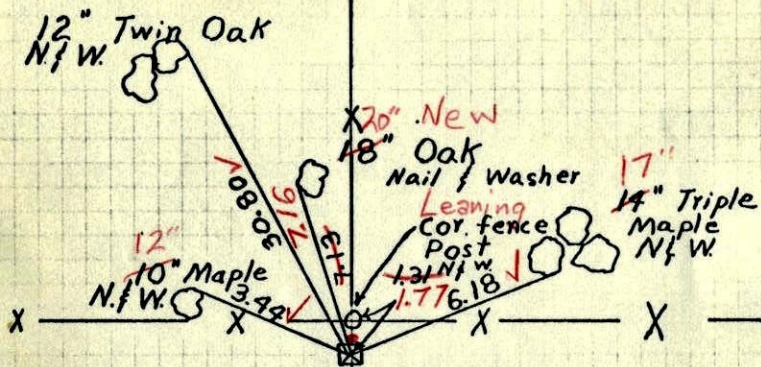
N.E. Cor. Sec 3-32-25

Found Granite Mon. flush.

on E & W fence

3/4" Iron Pipe on North Side

6/18/69

D. Powell
R. Olson
B. Olson

July 20, 1961

Freeman
Anderson
CarlsonTEMPERATURE CORRECTED
AND HORIZONTALLY
TAPED MEASUREMENTSROLAND W. ANDERSON
COUNTY SURVEYOR
ANOKA COUNTY, MINNESOTAentered
H.L.20 July 1961
Freeman Anderson
Carlson
+ 80°

NE Cor. Sec 3-32-25 Ramsey-

Found Granite Mon. on E & W Fence.

