

CERTIFICATE OF LOCATION OF GOVERNMENT CORNER

County of Anoka

State of Minnesota

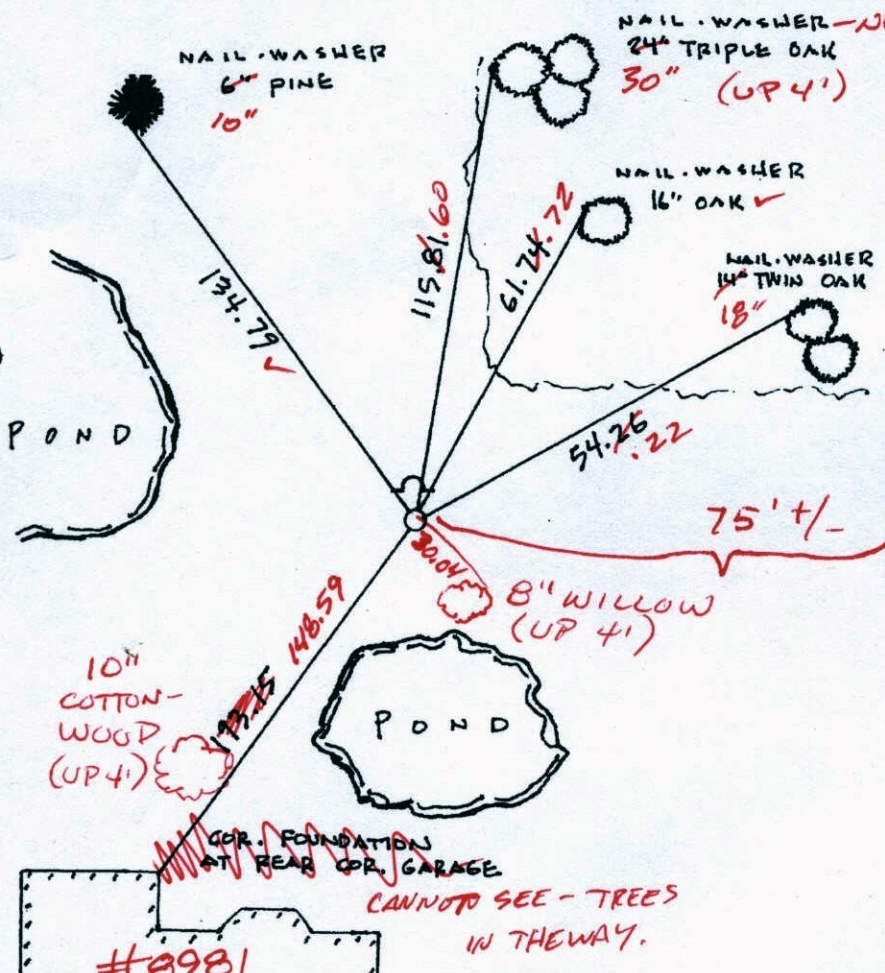
EAST 1/4 Corner of Sec. 18 Township 32 Range 25

I hereby certify that on the 18TH day of APRIL, 19 61, I found the described corner which was evidenced by CONCRETE MONUMENT

and I further certify that to perpetuate the location of said corner, I did, at the exact location thereof, place a permanent marker consisting of CAST IRON MONUMENT WITH SIGN
AND POST ON NORTH SIDE (DOWN 0.64)

which reference or witness monuments are located in the manner following:

5/04/10
BK-SH
T/T



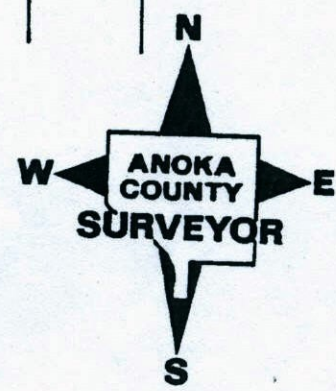
#8971
(ASPHALT)

N.A.D.	1983	Co-ordinates
County	Project	Co-ordinates
Northing	183185.9897	
Easting	442229.1183	
State Plane Co-ordinates		
Date <u>4/25/00</u>		

BK-SH
5-4-10
T/T

#8981

Revised date	Revised date	Revised date
6/9/88		
8/12/93		
5/9/96		
4/25/00		



CERTIFICATE OF LOCATION OF GOVERNMENT CORNER

County of Anoka

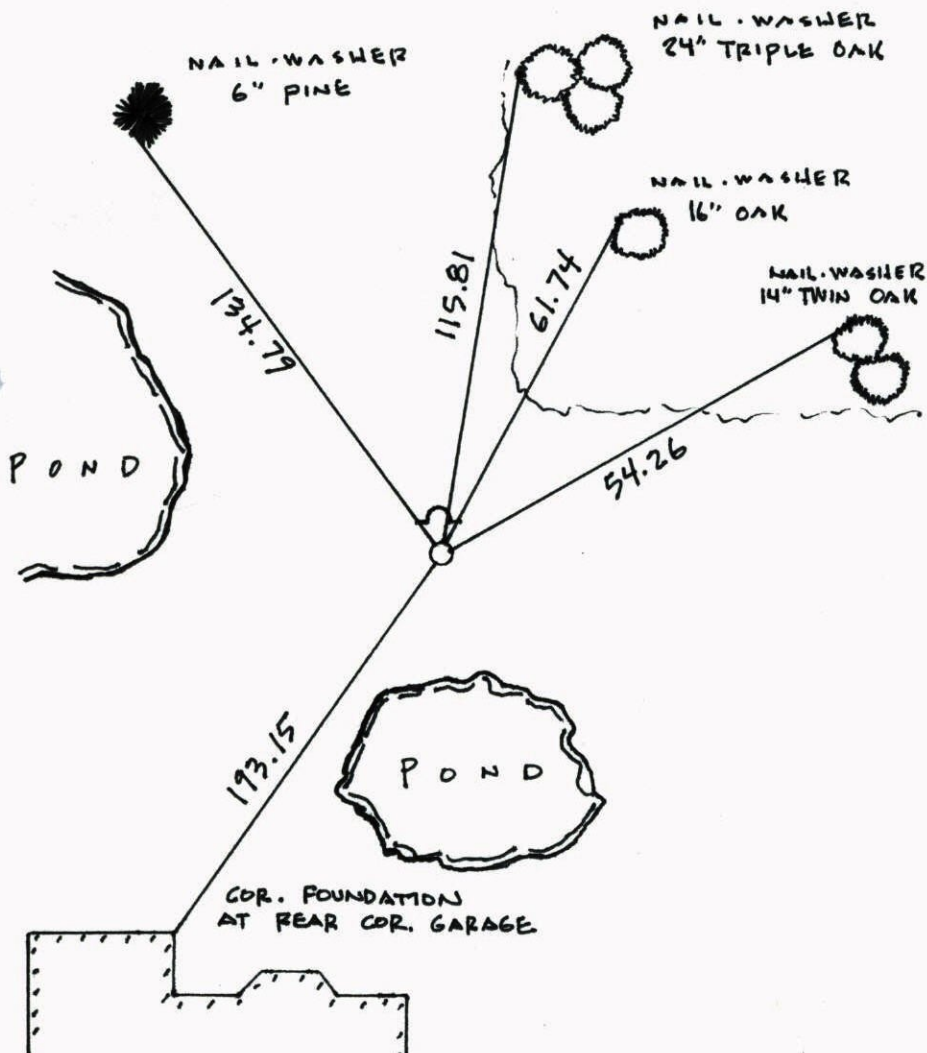
State of Minnesota

EAST 1/4 Corner of Sec. 18 Township 32 Range 25

I hereby certify that on the 18TH day of APRIL, 19 61, I found the described corner which was evidenced by CONCRETE MONUMENT

and I further certify that to perpetuate the location of said corner, I did, at the exact location thereof, place a permanent marker consisting of CAST IRON MONUMENT WITH SIGN
AND POST ON NORTH SIDE

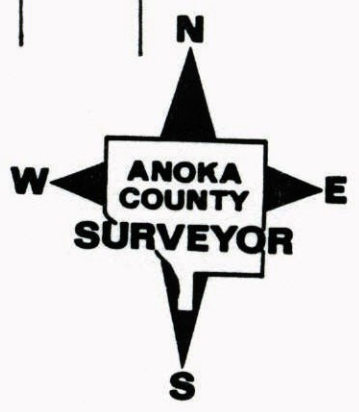
which reference or witness monuments are located in the manner following:



T
A
B
L
E
R
E
C
O
R
D

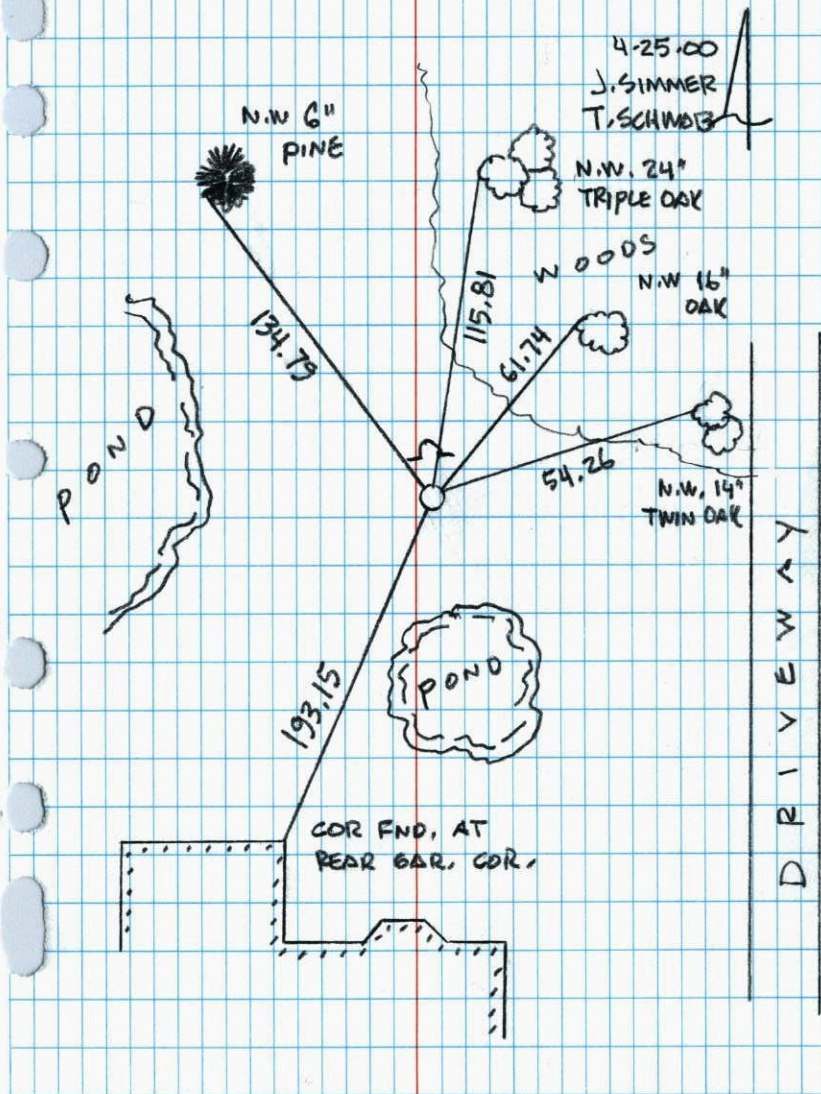
N.A.D.	1983	Co-ordinates
County	Project	Co-ordinates
Northing	<u>183185.9897</u>	
Easting	<u>442229.1183</u>	
State Plane Co-ordinates		
Y	_____	
X	_____	
Date _____		

Revised date	Revised date	Revised date
<u>6/9/88</u>		
<u>8/12/93</u>		
<u>5/9/96</u>		
<u>4/25/00</u>		



EAST 1/4 COR. SEC. 18 T32 R25
GPS & RETIED CAST IRON MONUMENT
SIGN & POST ON NORTH SIDE

NATIONAL PRINTFAST
NO. 446

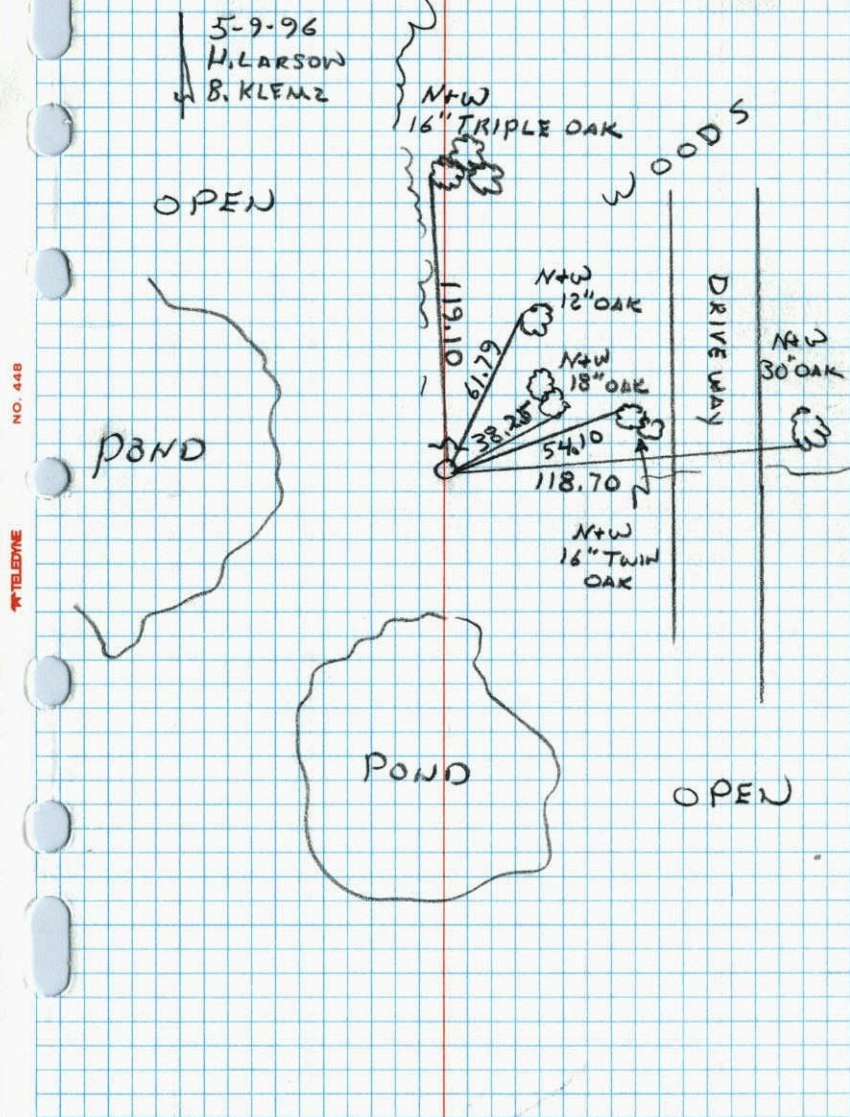


E 1/4 COR. SEC. 18 T32 R25

RETIED CAST IRON MONUMENT
SIGN + POST ON NORTH SIDE

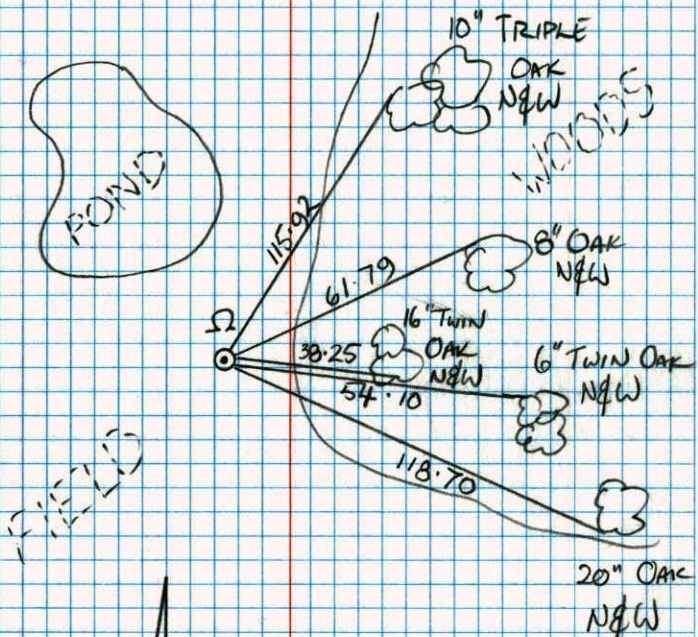
NO. 448

TELETYPE



EAST 1/4 SEC 18 T 32 R 25

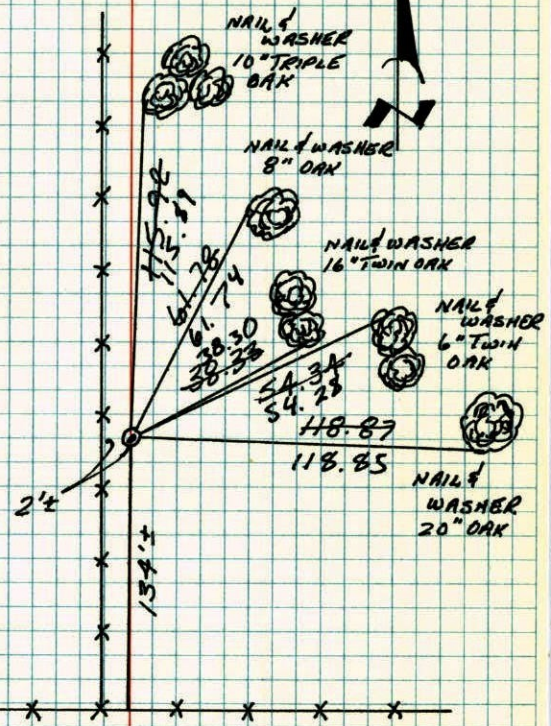
RETIÉ CAST IRON MONUMENT
W/ SIGN & POST ON NTH SIDE



JAMIE ANDERSON
JOSH ANDERSON

E 1/4 CORNER SECTION 18-T32-R25

SET CAST IRON MONUMENT AT LOCATION OF BROKEN
CONCRETE MONUMENT.
18 APR 61
FREDMAN
ANDERSON



Tie Check
6-20-79
Stephens
Stephens
Ross

TIE CHECK
29 JUN 76
G. ADAMS
G. SANNEROD
S. BRISH

TIE CHECK
8-12-82
P. ROSS
P. HORNBY

TEMPERATURE CORRECTED ROLAND W. ANDERSON
AND HORIZONTALLY COUNTY SURVEYOR
TAPED MEASUREMENTS ANOKA COUNTY, MINNESOTA

REORAWN
15 JAN 79
RMG

SEE NEW
TIE BOOK

61

E 1/4 COR. SEC 18-32-25 RAMSEY

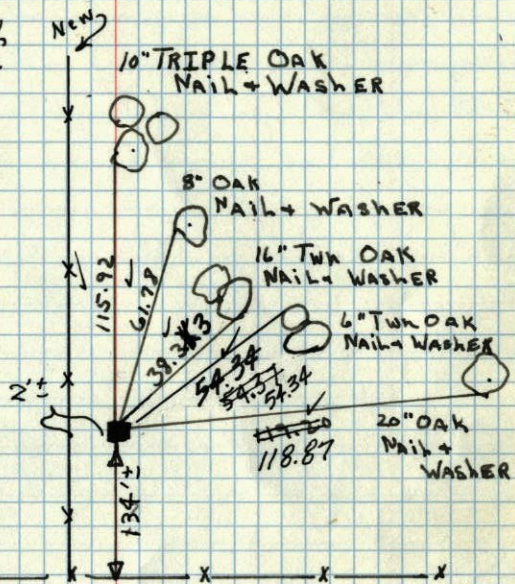
Found ~~Cone Mon.~~ Top 0.2' broken off. SET
1/2" IRONS ON N + S. FACE OF ~~IRON~~ ^{Monument}

Replaced with
cast iron mon.

6-16-69
D. Powell
R. Olson
B. Olson

Tie Check
8/6/72
B. Olson
J. Boetcher
K. Bauer

Tie Check
6-29-76
C. Adams
B. Sommerud
S. Brien



4-18-61
FREEMAN - ANDERSON

Temp. Corr: +65°

Retie 8/7/64

M. D. Anderson
R. Carlson

TEMPERATURE CORRECTED
AND HORIZONTALLY
TAPED MEASUREMENTS

ROLAND W. ANDERSON
COUNTY SURVEYOR
ANOKA COUNTY, MINNESOTA

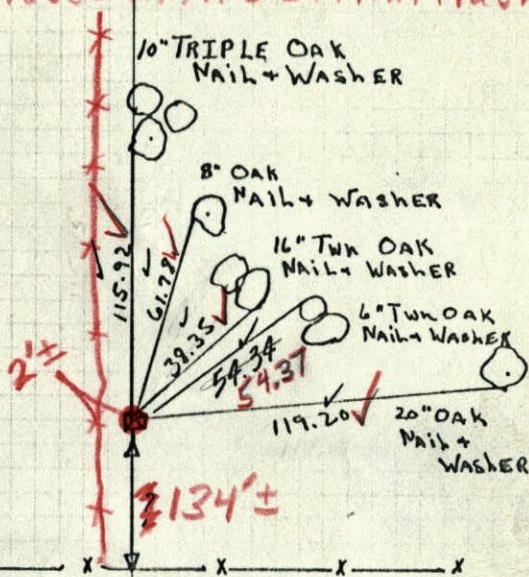
39

E 1/4 COR. SEC 18-32-25 RAMSEY

Found Cone Mon. Top 0.2' broken off. SET
1/2" IRONS ON N + S. FACE OF ~~IRON~~ ^{Monument}

Replaced with C.I. Mon. flush.

6/16/69
#6-70°
D. Powell
R. Olson
B. Olson



4-18-61
FREEMAN - ANDERSON

Temp. Corr: +65°

Retie 8/7/64

M. D. Anderson
R. Carlson

TEMPERATURE CORRECTED
AND HORIZONTALLY
TAPED MEASUREMENTS

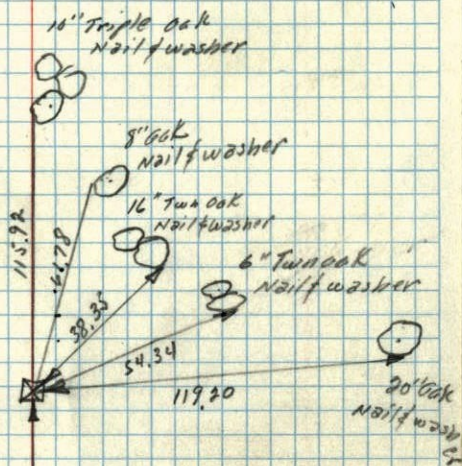
ROLAND W. ANDERSON
COUNTY SURVEYOR
ANOKA COUNTY, MINNESOTA

external
R.L.

18 April 1961
 Freeman Anderson
 +65°

E 1/4 Cor Sec 18-32-25 Ramsey

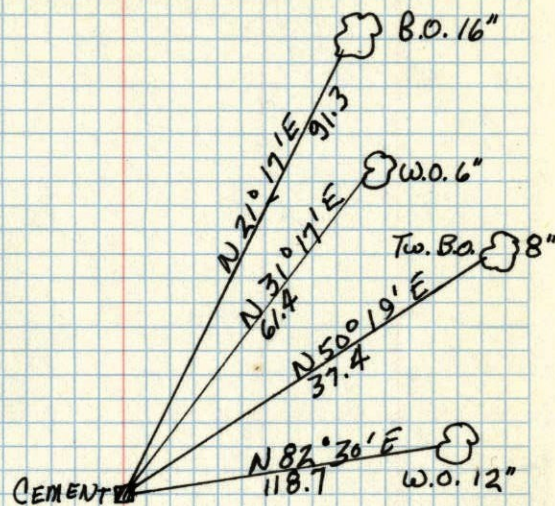
Found Cone Mon. top 0.3' broken off. Set
 1/2" irons on N & S face of Mon.



Temp. O.K.

15
 E 1/4 CORNER OF Sec 18, T 32, R 25 ✓

CONCRETE FLUSH



Nov 4, 1943
 Cartwright