

CERTIFICATE OF LOCATION OF GOVERNMENT CORNER

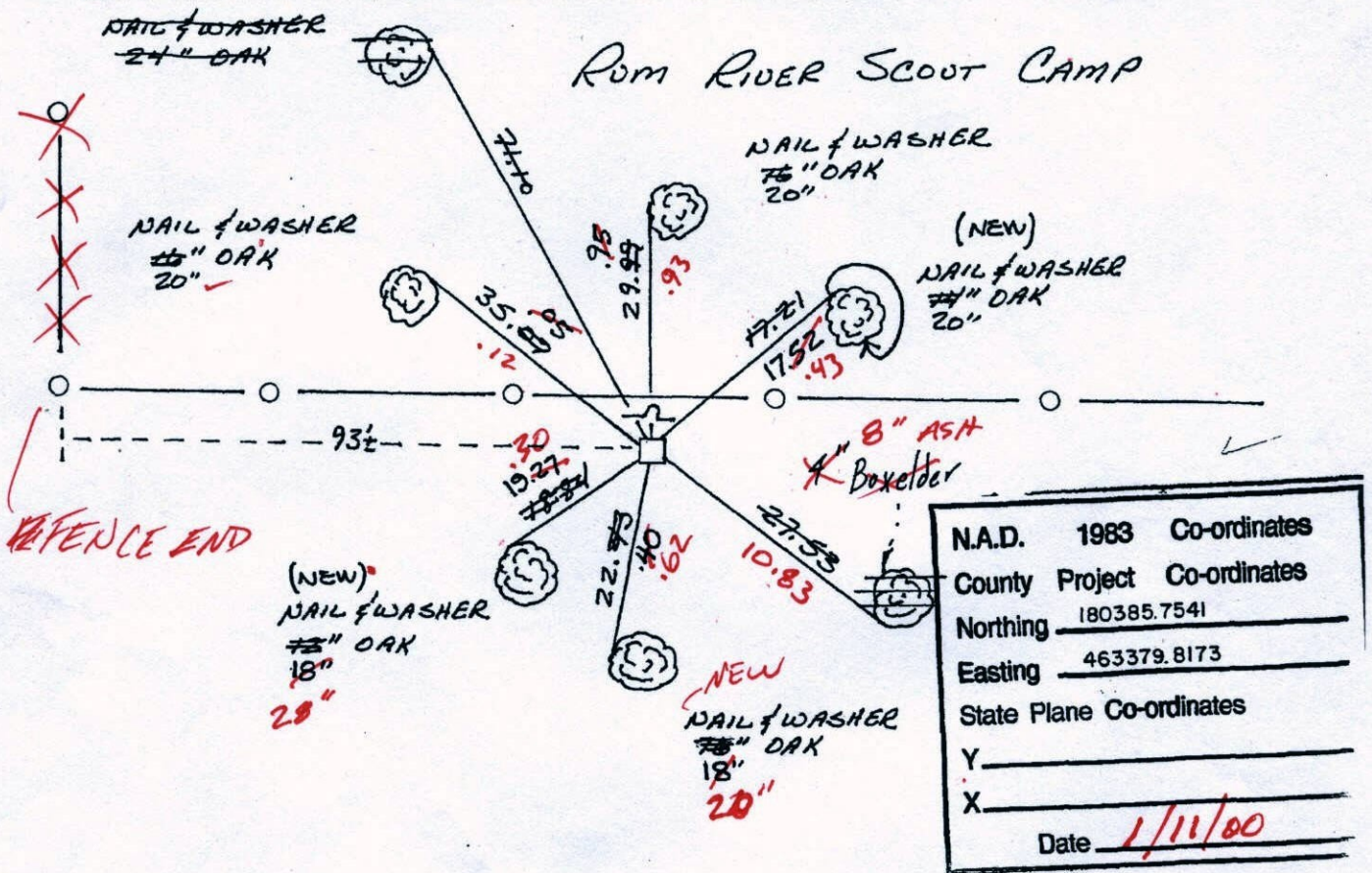
County of Anoka

State of Minnesota

SOUTHWEST Corner of Sec. 13 Township 32 Range 25

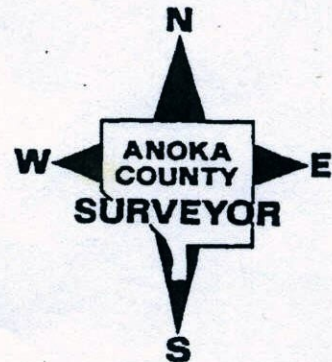
I hereby certify that on the 27 day of AUGUST, 1959, I found the described corner which was evidenced by GRANITE MONUMENT

and I further certify that to perpetuate the location of said corner, I did, at the exact location thereof, place a permanent marker consisting of GRANITE MONUMENT WITH SIGN AND POST ON THE NORTH SIDE which reference or witness monuments are located in the manner following:



Revised date Revised date Revised date

8-19-82		
7-23-85		
7-11-88		
8-10-93		
1-11-00		



Hand 47

CERTIFICATE OF LOCATION OF GOVERNMENT CORNER

County of Anoka

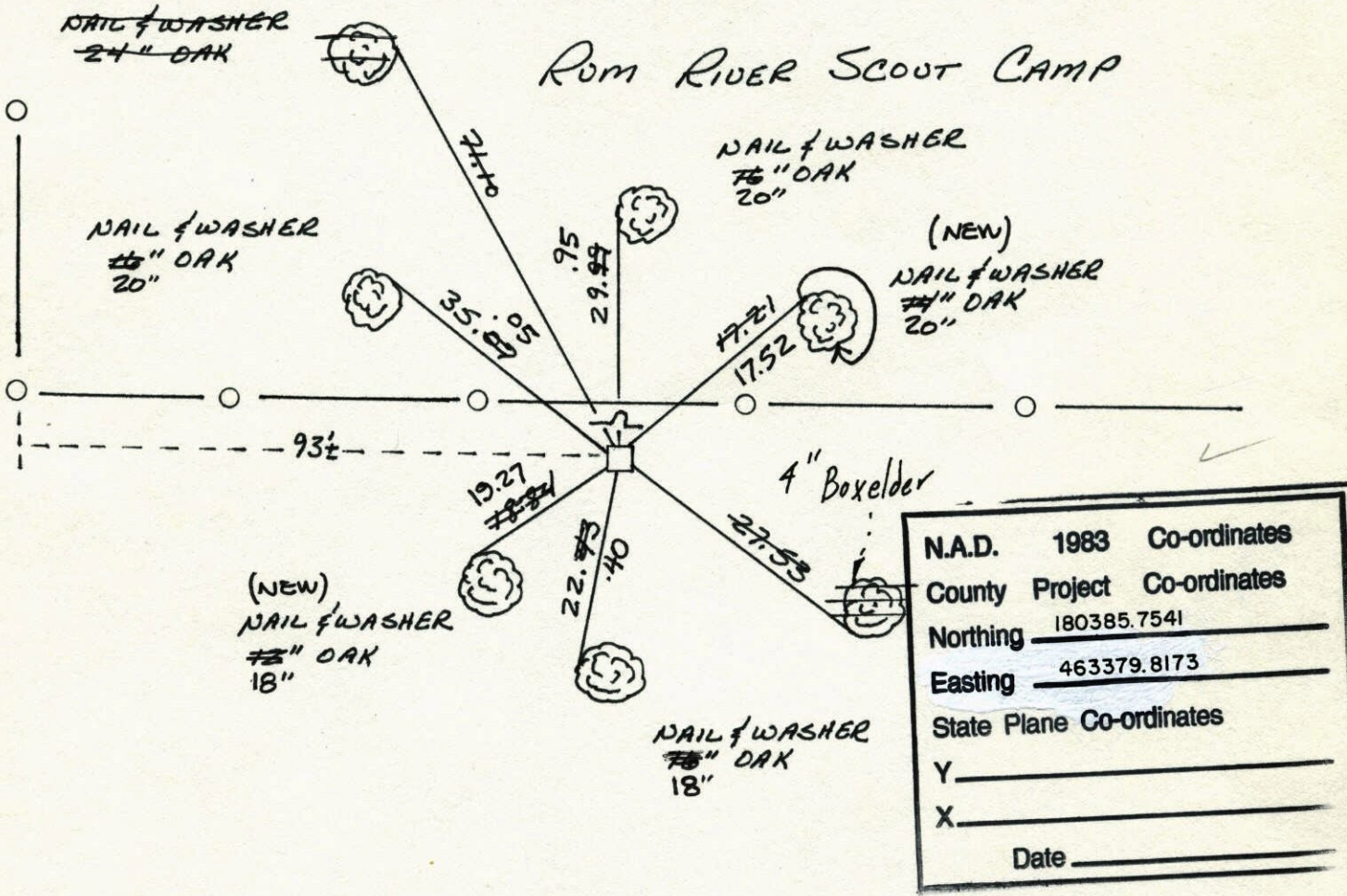
State of Minnesota

SOUTHWEST Corner of Sec. 13 Township 32 Range 25

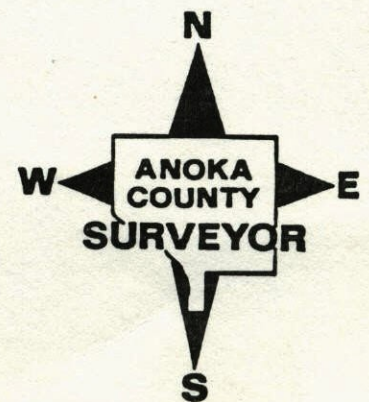
I hereby certify that on the 27 day of AUGUST, 1959, I found the described corner which was evidenced by GRANITE MONUMENT

and I further certify that to perpetuate the location of said corner, I did, at the exact location thereof, place a permanent marker consisting of GRANITE MONUMENT WITH SIGN AND POST ON THE NORTH SIDE

which reference or witness monuments are located in the manner following:

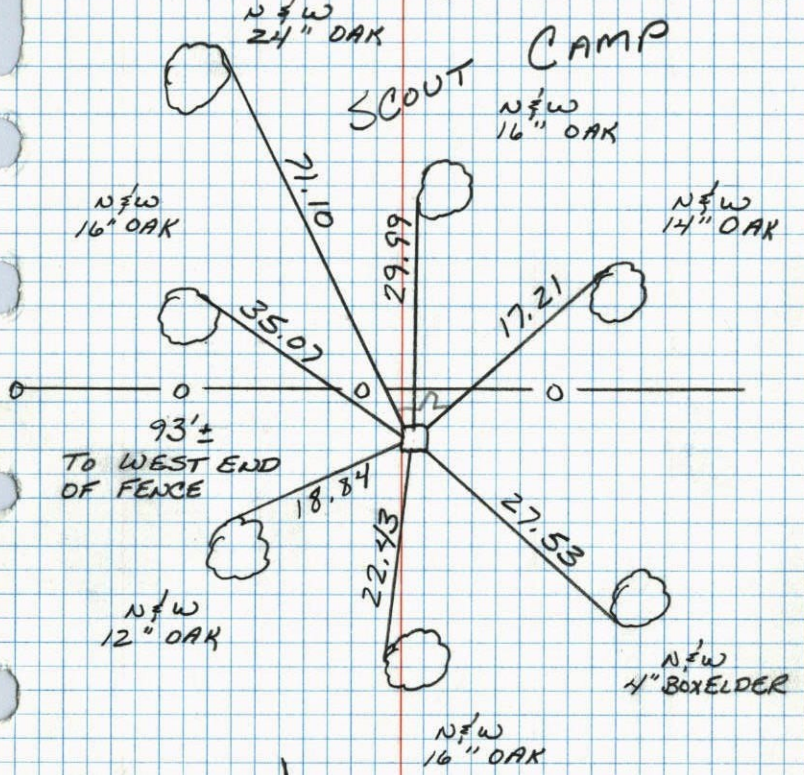


Revised date	Revised date	Revised date
8-19-82		
7-23-85		
7-11-88		
8-10-93		
1-11-00		



S.W. CORNER SEC. 13 T32 R25

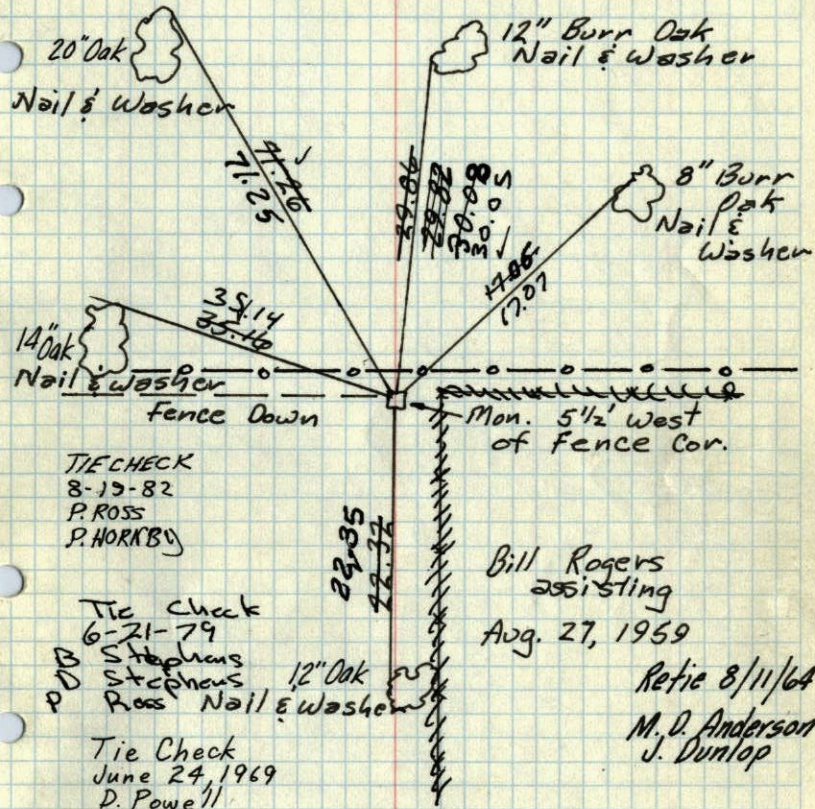
RETIED GRANITE MONUMENT, 1 1/2" SOUTH OF FENCE.



7-11-88
 B. GUETZKO
 A. SHROYER
 M. WALL-H
 85° 200' TAPE

SW Corn Sec 13, T32, R25

GRANITE MON. with "X" up 1.0



TIE CHECK
 8-13-82
 P. ROSS
 P. HORKBY

Tie Check
 6-21-79
 S. Stephens
 Ross
 Nail & Washer

Tie Check
 June 24, 1969
 D. Powell
 R. Olson
 B. Olson

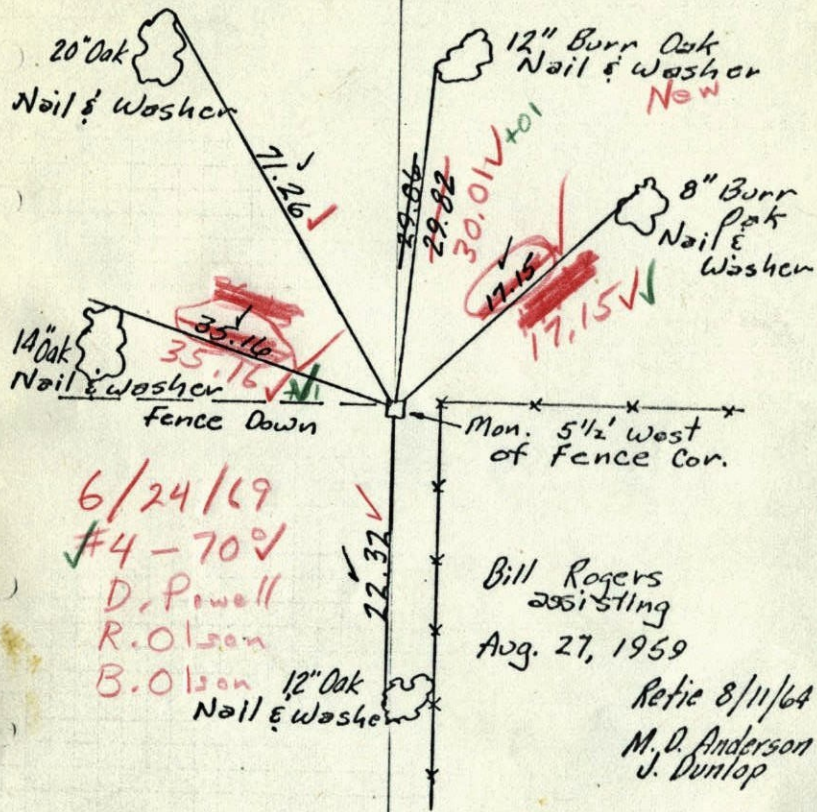
Tie Check
 8/8/72
 B. Olson
 J. Boetcher
 R. Bauer
 all ties O.K.

Bill Rogers
 assisting
 Aug. 27, 1969

Retie 8/11/64
 M. D. Anderson
 J. Dunlop

ROLAND W. ANDERSON
 COUNTY SURVEYOR
 ANOKA COUNTY, MINNESOTA

X SW Corn Sec 13, T32, R25
GRANITE MON.
with "X" up 1.0

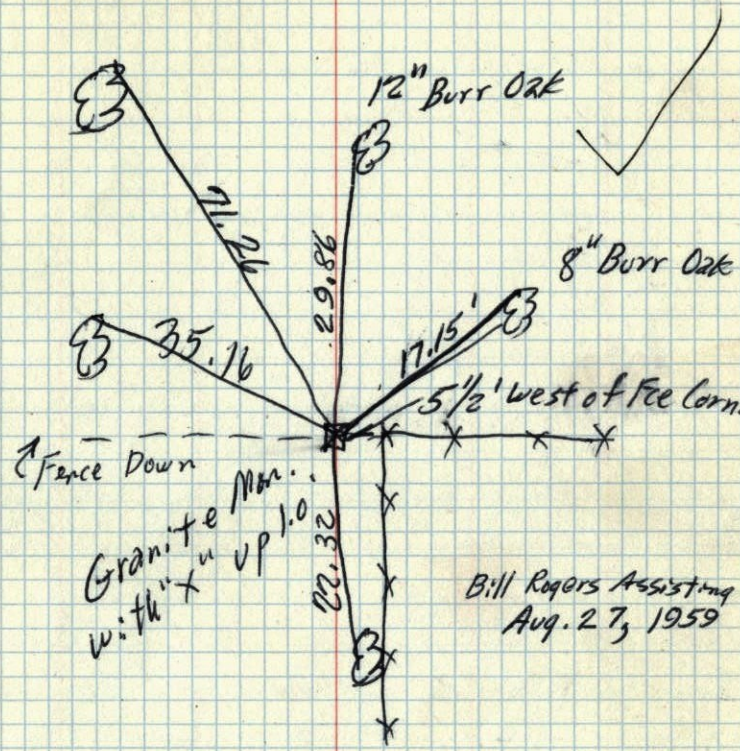


6/24/69
#4-70 ✓
D. Powell
R. Olson
B. Olson

Bill Rogers
Assisting
Aug. 27, 1959
Retire 8/11/64
M. D. Anderson
J. Dunlop

ROLAND W. ANDERSON
COUNTY SURVEYOR
ANOKA COUNTY, MINNESOTA

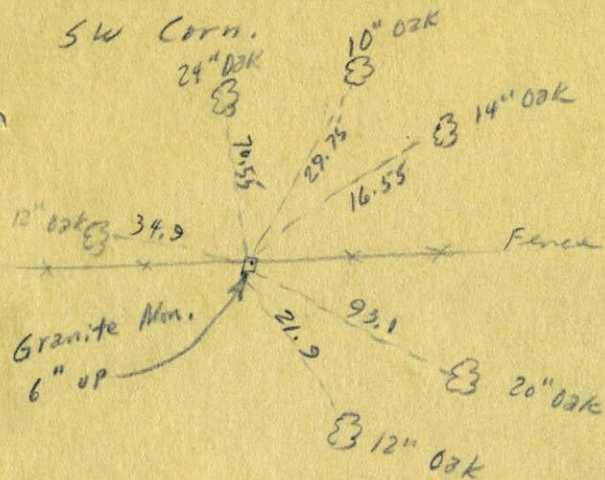
SW Corn. Sec. 13, T32, R25



Granite Mon.
with "X" up 1.0

Bill Rogers Assisting
Aug. 27, 1959

Sec. 13, T 32, R 25



From F. C. Jackson
(Cartwrights Old Ties)

W. W. [unclear]