

CERTIFICATE OF LOCATION OF GOVERNMENT CORNER

County of Anoka

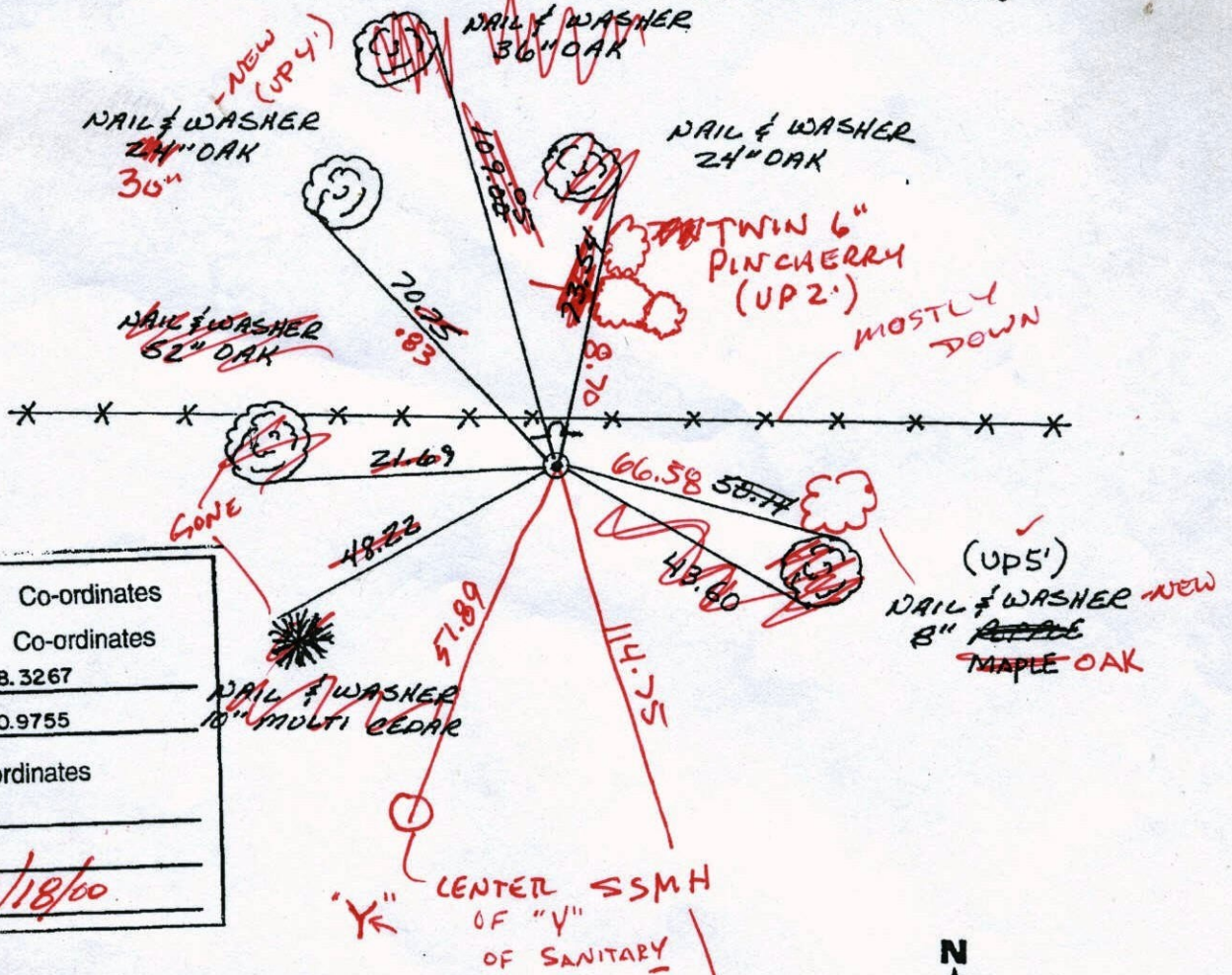
State of Minnesota

NORTHWEST Corner of Sec. 23 Township 32 Range 25

I hereby certify that on the 27 day of APRIL, 1961, I found the described corner which was evidenced by 1/2" IRON PIPE

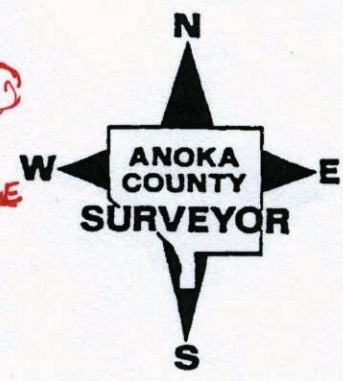
and I further certify that to perpetuate the location of said corner, I did, at the exact location thereof, place a permanent marker consisting of CAST IRON MONUMENT WITH SIGN AND POST ON THE NORTH SIDE (UP 0.2')

which reference or witness monuments are located in the manner following:



N.A.D.	1983	Co-ordinates
County	Project	Co-ordinates
Northing	180388.3267	
Easting	458070.9755	
State Plane Co-ordinates		
Y	_____	
X	_____	
Date	<u>4/18/00</u>	

Revised date	Revised date	Revised date
8-18-82		
7-29-85		
7-11-88		
8-16-93		
4-18-00		



CERTIFICATE OF LOCATION OF GOVERNMENT CORNER

County of Anoka

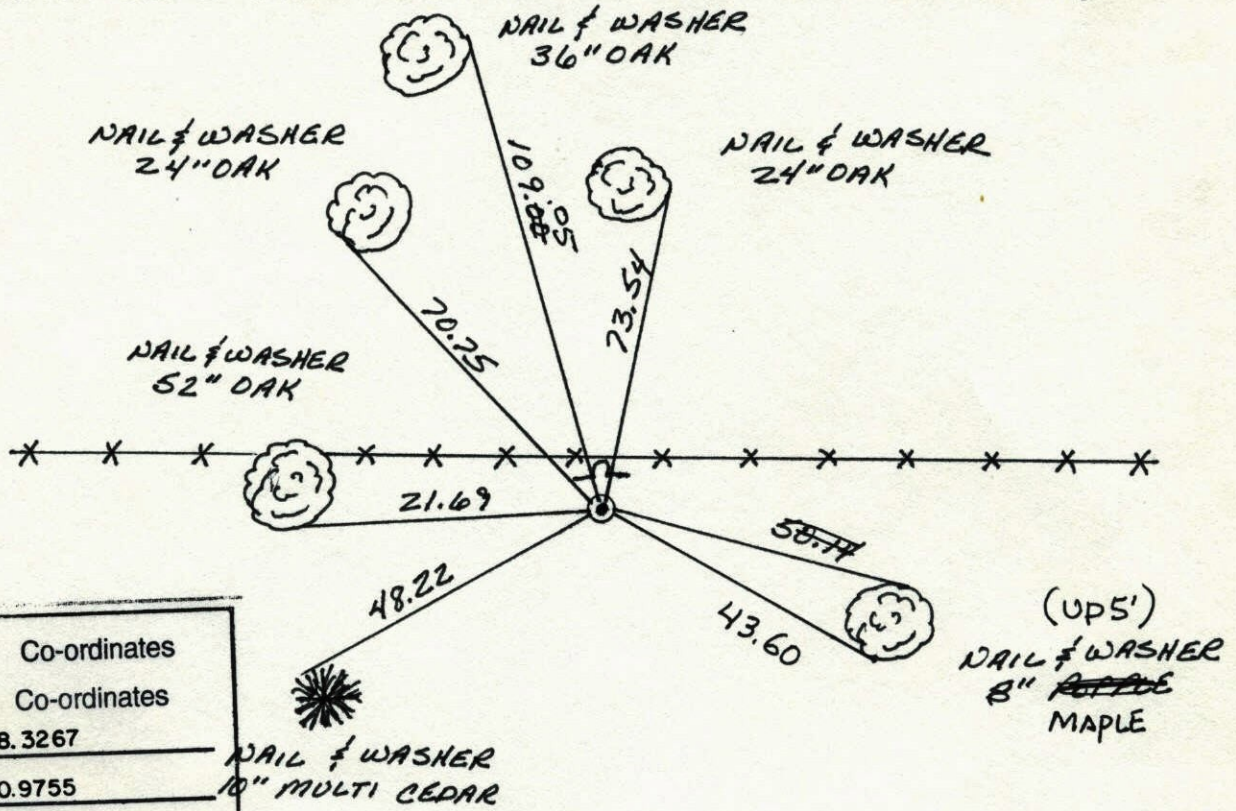
State of Minnesota

NORTHWEST Corner of Sec. 23 Township 32 Range 25

I hereby certify that on the 27 day of APRIL, 1961, I found the described corner which was evidenced by 1/2" IRON PIPE

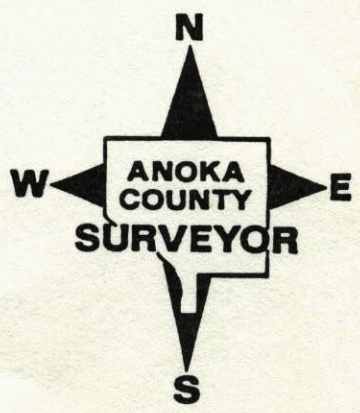
and I further certify that to perpetuate the location of said corner, I did, at the exact location thereof, place a permanent marker consisting of CAST IRON MONUMENT WITH SIGN AND POST ON THE NORTH SIDE

which reference or witness monuments are located in the manner following:



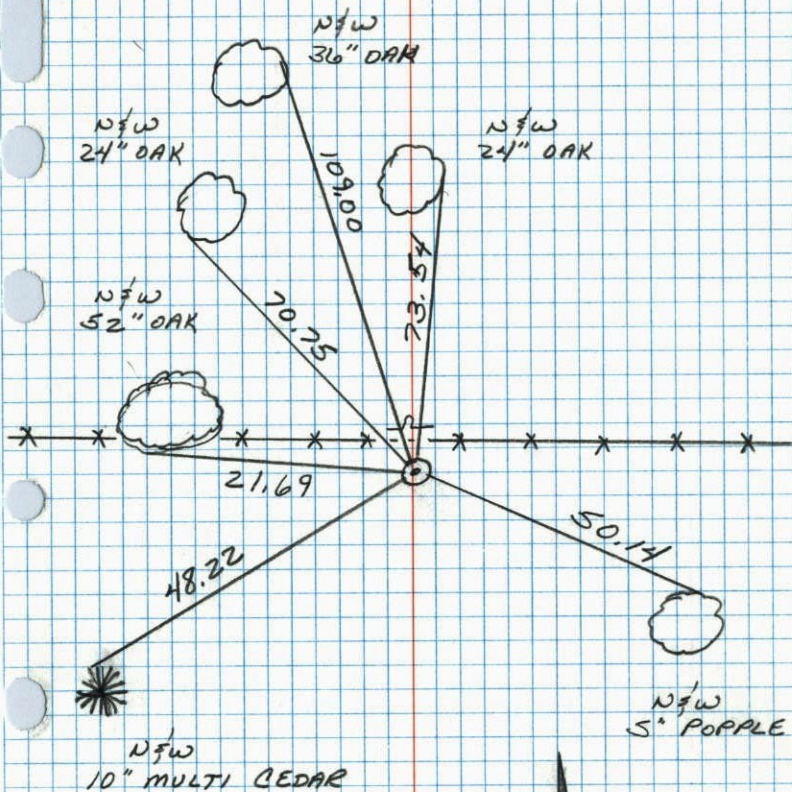
N.A.D.	1983	Co-ordinates
County	Project	Co-ordinates
Northing	<u>180388.3267</u>	
Easting	<u>458070.9755</u>	
State Plane Co-ordinates		
Y	_____	
X	_____	
Date	_____	

Revised date	Revised date	Revised date
<u>8-18-82</u>		
<u>7-29-85</u>		
<u>7-11-88</u>		
<u>8-16-93</u>		
<u>4-18-00</u>		



NW CORNER SEC 23 T32 R25

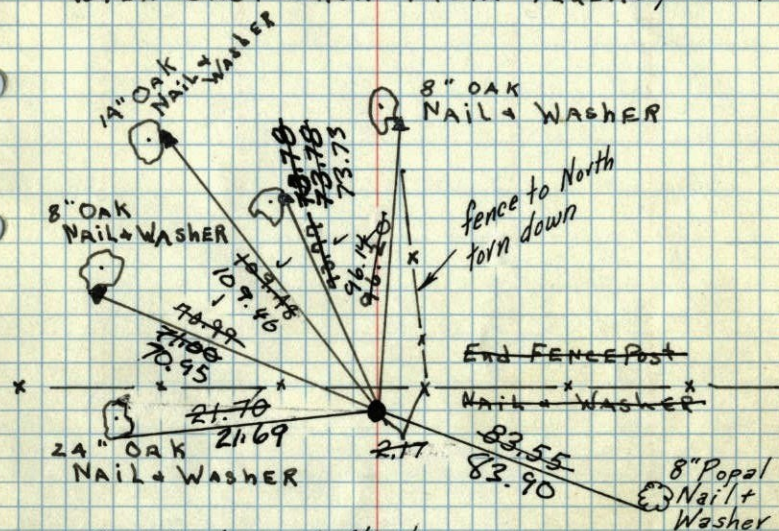
RETIED CAST IRON MONUMENT



7-11-88
 B. QUETZKO
 A. SHROYER
 M. NAJI-H
 84° 200' TAPE

NW COR. SEC 23-32-25 RAMSEY.

Found 1/2" IRON BY RAY PRASCH. REPLACED
 WITH CAST IRON MON. FLASHUP 0.14



Tie Check
 June 19, 1969
 D. Powell
 R. Olson
 B. Olson

tie check
 7-1-76
 S. Brien
 B. Sannered
 G. Adams

Tie Check
 8/18/70
 B. Olson
 J. Boetcher
 R. Bauer
 ties O.K.

TIE CHECK
 8-18-82
 P. ROSS
 P. HORNBY

TEMPERATURE CORRECTED
 AND HORIZONTALLY
 TAPED MEASUREMENTS

Tie Check
 6-21-79
 B. Stephens
 B. Stephens
 Ross

4-27-61

FREEMAN-ANDERSON

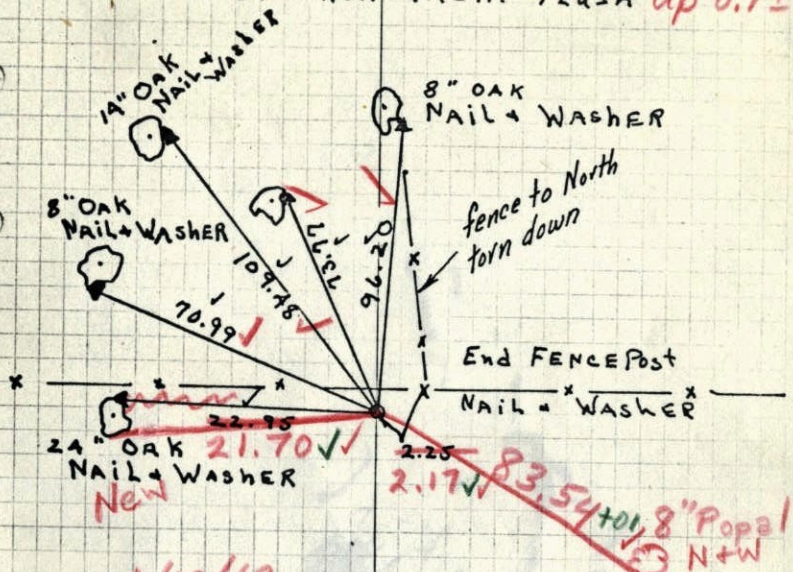
Temp Corr: +45°
 VERY WINDY

Retie 8/6/64

M.D. Anderson
 R. Carlson

ROLAND W. ANDERSON
 COUNTY SURVEYOR
 ANOKA COUNTY, MINNESOTA

NW Cor. SEC 23-32-25 RAMSEY.
 Found 1/2" IRON By RAY PRASCH. REPLACED
 With Cast Iron Mon. flush up 0.1'±



6/19/69

✓ 6-68 ✓

D. Powell

R. Olson

B. Olson

TEMPERATURE CORRECTED
 AND HORIZONTALLY
 TAPED MEASUREMENTS

4-27-61

FREEMAN-ANDERSON

Temp Corr: +45°
 very windy

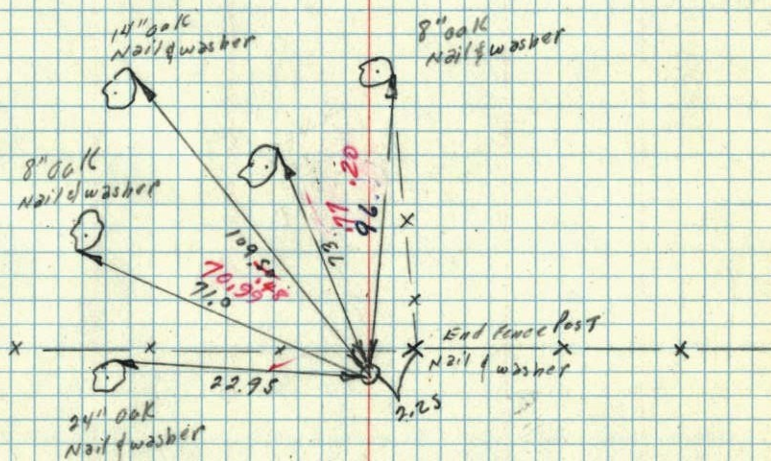
Retie 8/6/64

M.D. Anderson
 R. Carlson

ROLAND W. ANDERSON
 COUNTY SURVEYOR
 ANOKA COUNTY, MINNESOTA

27 April 1961
 Freeman Anderson
 +45°
 very windy

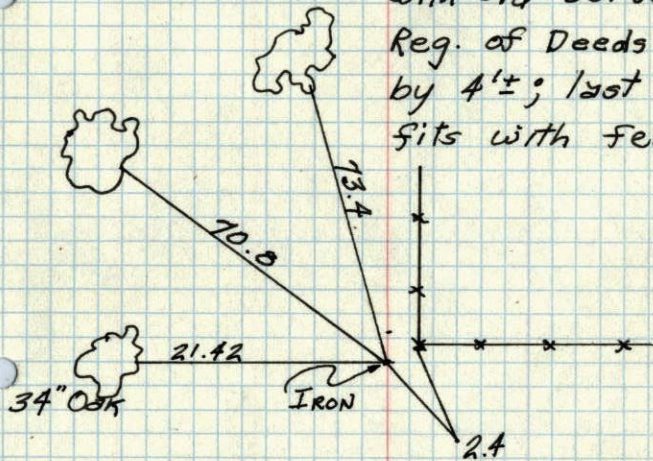
NW Cor Sec 23-32-25 Ramsey.
 Found 1/2" iron By Ray Prasch. Replaced
 with Cast Iron Mon. flush



Temp. Corr.

N.W. Corner Sec. 23, T32, R 25
Iron

Ray Prasch from C&O
says that large Oak
checks fairly close
to Old Govt. B.T.;
Corner Iron He
placed also checks
with old survey in
Reg. of Deeds office
by 4'±; last corner
fits with fences.



C&O
Sept. 25, 1959