

# CERTIFICATE OF LOCATION OF GOVERNMENT CORNER

County of Anoka State of Minnesota

EAST 1/4 Corner of Sec. 19 Township 32 Range 25

I hereby certify that on the 8<sup>TH</sup> day of JANUARY, 1968, I found the described corner which was evidenced by SPIKE SET FROM RESURVEY

and I further certify that to perpetuate the location of said corner, I did, at the exact location thereof, place a permanent marker consisting of CAST IRON MONUMENT

NO SIGN OR POST/DOWN 0.5'

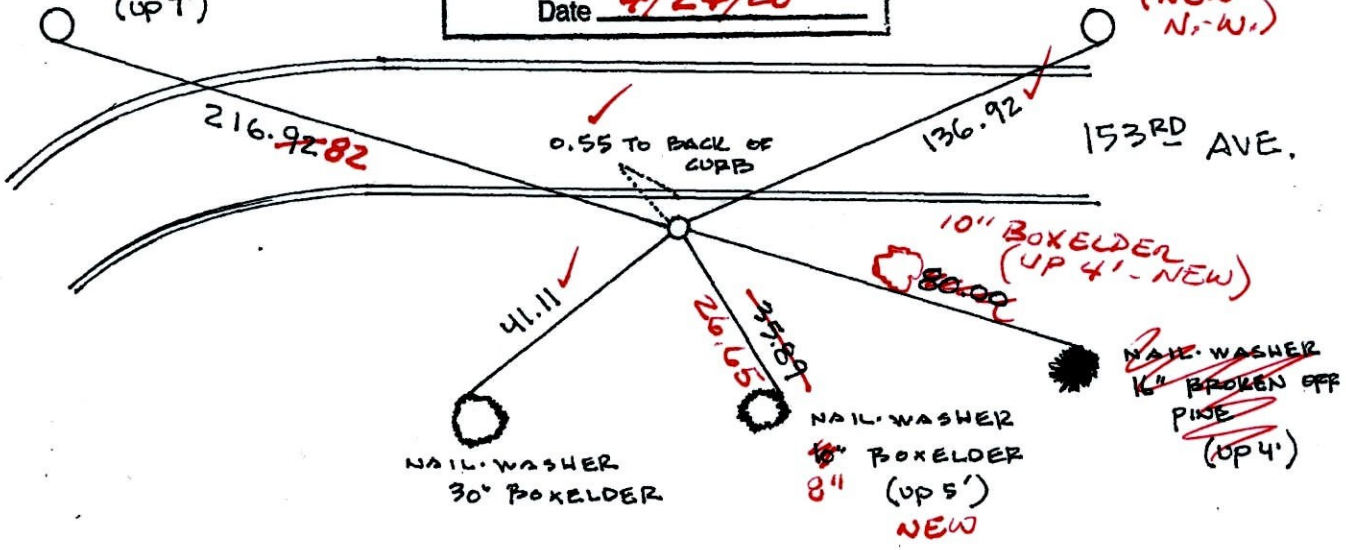
which reference or witness monuments are located in the manner following:

N.A.D.	1983	Co-ordinates
County Project	Co-ordinates	
Northing	177825.4903	
Easting	442201.2430	
State Plane Co-ordinates		
Y	_____	
X	_____	
Date	4/24/00	

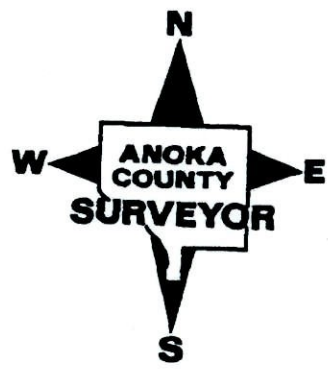
BK-SH  
4-13-10  
T/T

#97114  
NAIL-WASHER  
POWER POLE  
(up 7')

#97115  
NAIL-WASHER  
POWER POLE  
(NEW  
N.W.)



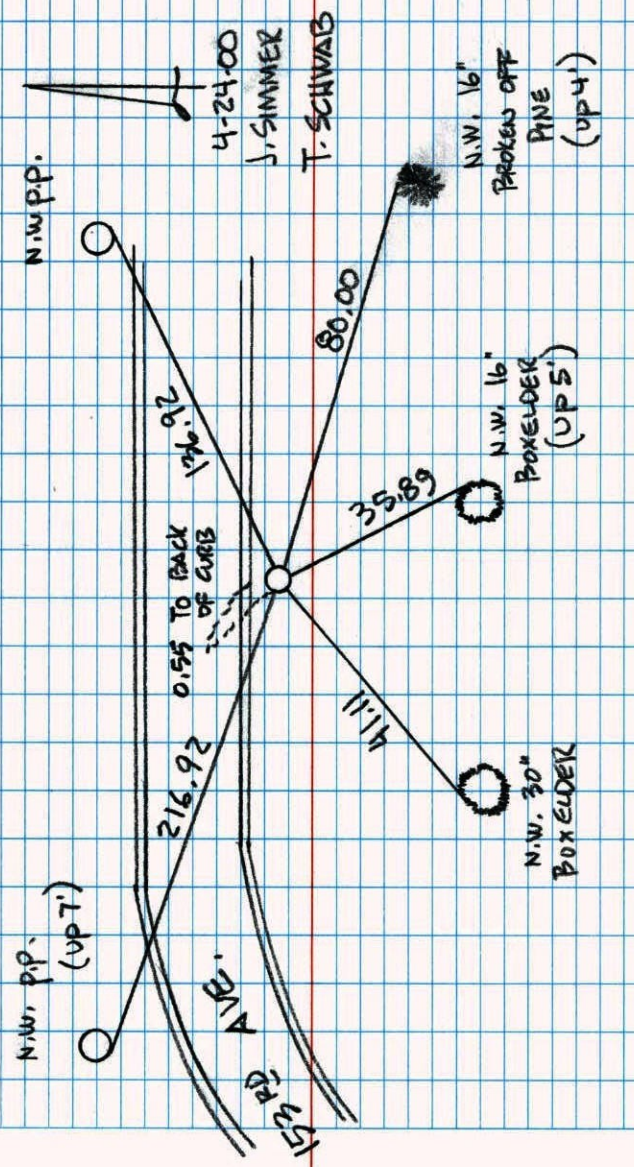
Revised date	Revised date	Revised date
6/13/88		
8/11/93		
4/24/00		





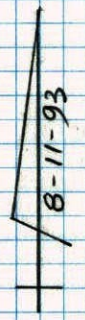
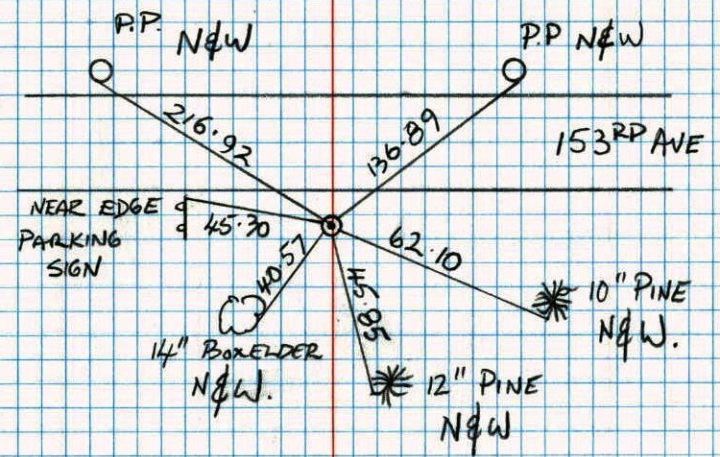


EAST 1/4 COR. SEC. 19 T 32 R 25  
GPS & RETIED CAST IRON MON.



EAST 1/4 SEC 19 T 32 R 25

RETIE CAST IRON MONUMENT



JAMIE ANDERSON  
JOSH ANDERSON



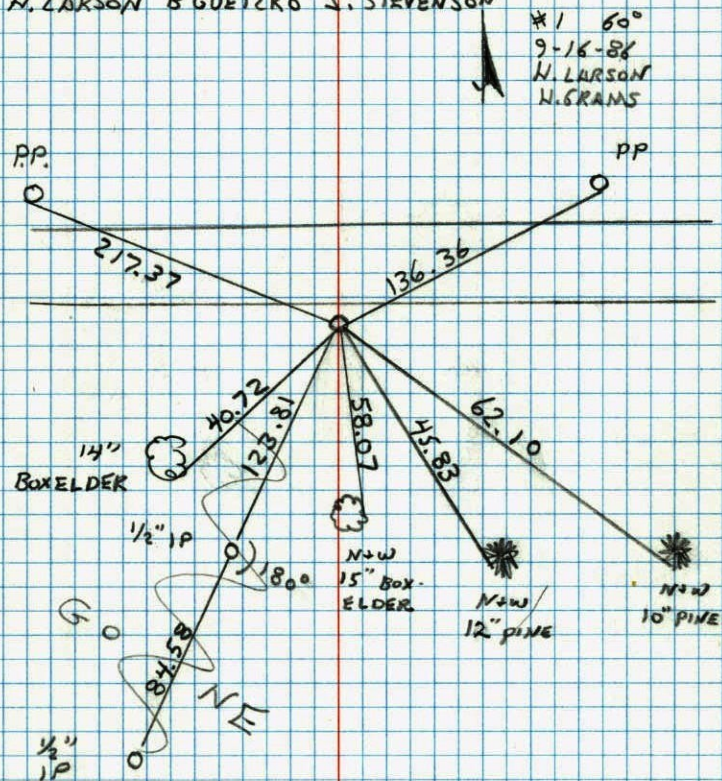
E 1/4 CORNER SECTION 19 T32 R25

TOOK ADDITIONAL TIES FOR ROAD CONST.

REMOVED C.I. SIGN AND POSTS BY

I.P.S. &amp; SET 1/2" IP AND TIED 1-20-88

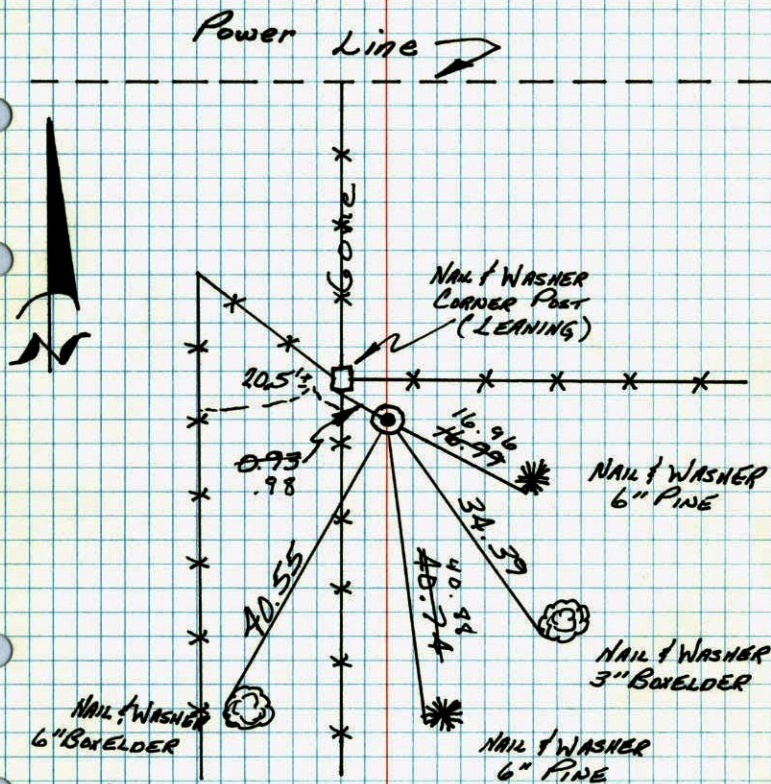
H. LARSON B. GUETZKO J. STEVENSON



E 1/4 COR. SEC. 19 - T32 - R25

87

SET CAST IRON MONUMENT

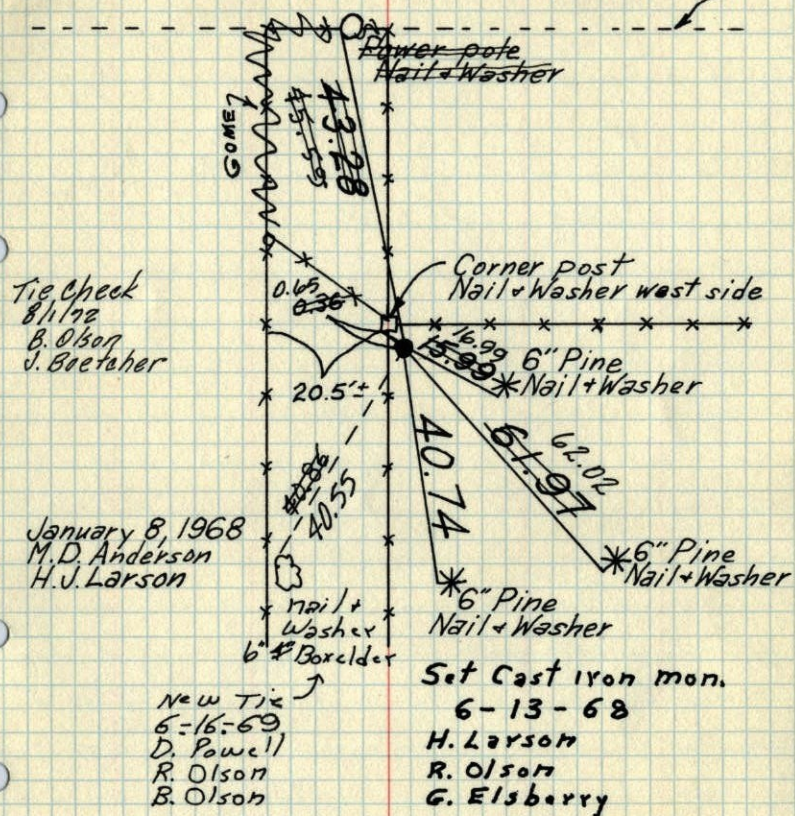
8 JAN 68  
M.D. ANDERSON  
H.J. LARSONTIE CHECK  
7-12-76  
G. ADAMS  
B. SANNEVED  
S. BRIENTIE CHECK  
8-12-82  
P. ROSS  
P. HORKBYTie Check  
6-25-79  
P. Stephens  
P. Stephens  
P. ROSSTEMPERATURE CORRECTED  
AND HORIZONTALLY  
TAPED MEASUREMENTSROLAND W. ANDERSON  
COUNTY SURVEYOR  
ANOKA COUNTY, MINNESOTA



E $\frac{1}{4}$  Cor. Sec. 19-T32-R25

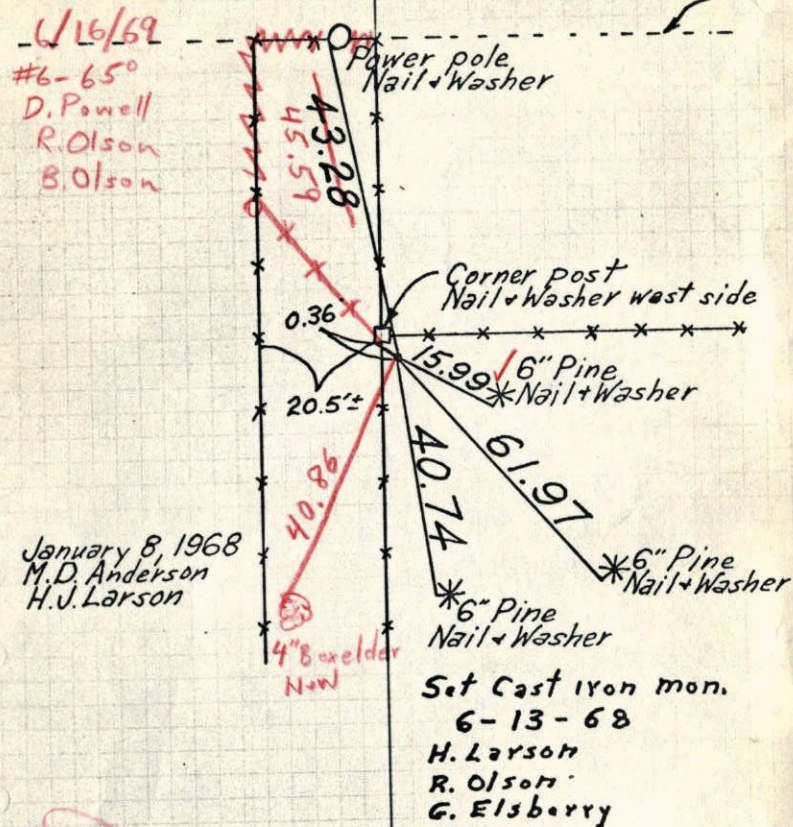
Set Spike Cast Iron Monument

Pole line

TEMPERATURE CORRECTED  
AND HORIZONTALLY  
TAPED MEASUREMENTSROLAND W. ANDERSON  
COUNTY SURVEYOR  
ANOKA COUNTY, MINNESOTAE $\frac{1}{4}$  Cor. Sec. 19-T32-R25

Set Spike

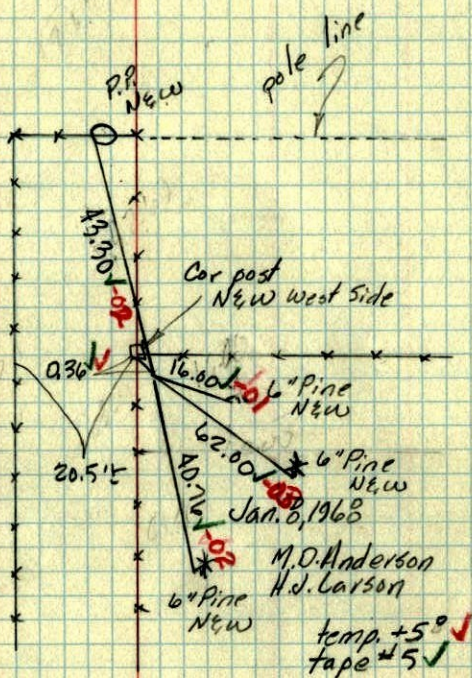
Pole line

TEMPERATURE CORRECTED  
AND HORIZONTALLY  
TAPED MEASUREMENTSROLAND W. ANDERSON  
COUNTY SURVEYOR  
ANOKA COUNTY, MINNESOTA



E. 1/4 Cor. Sec. 19-T32-R25

Set Spike



~~Survey completed in wrong  
K will~~