

CERTIFICATE OF LOCATION OF GOVERNMENT CORNER

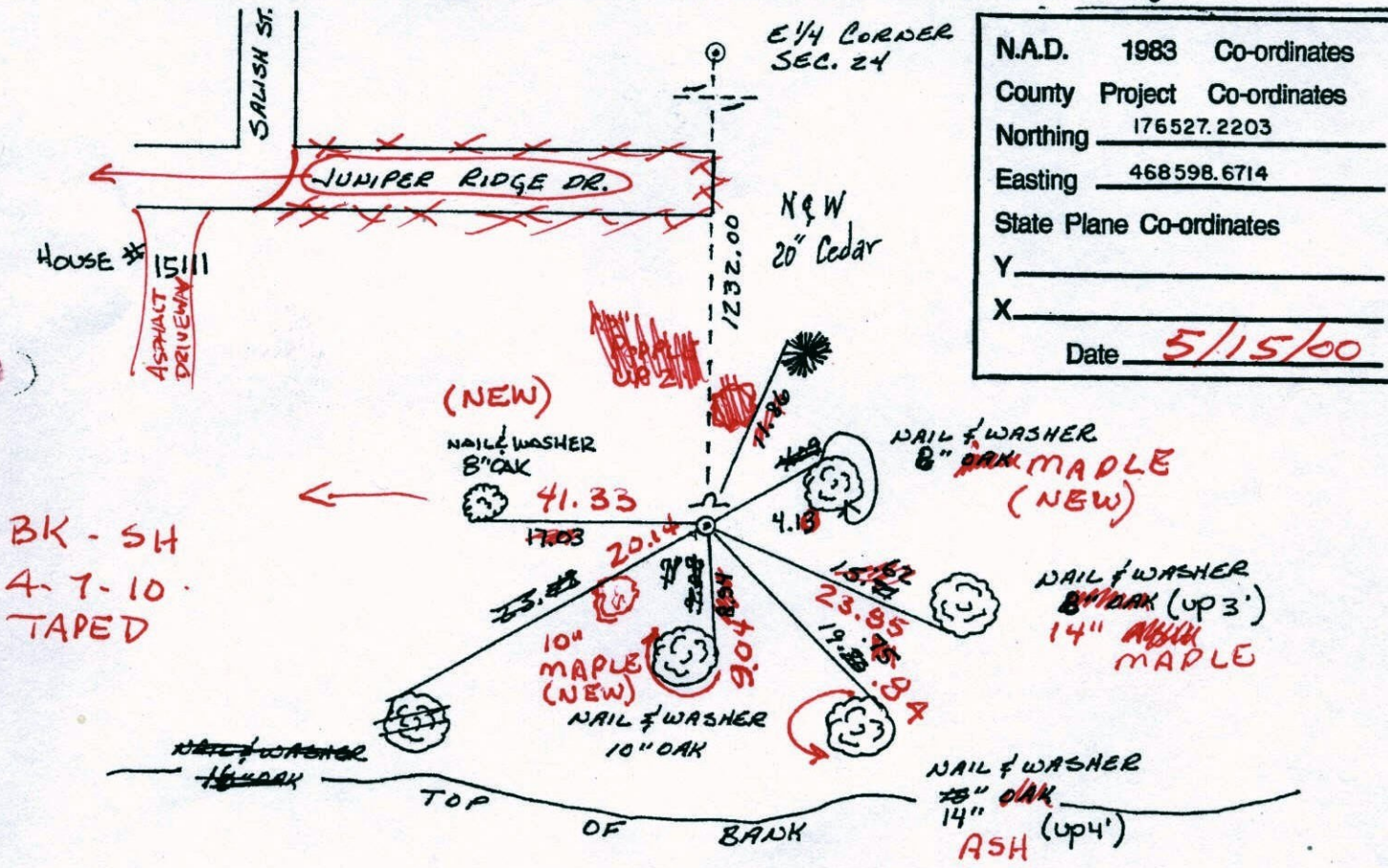
County of Anoka

State of Minnesota

WITNESS Corner of Sec. 24 Township 32 Range 25
EAST LINE OF SE 1/4

I hereby certify that on the 23 day of AUGUST, 1963, I found the described corner which was evidenced by AREA RESURVEY

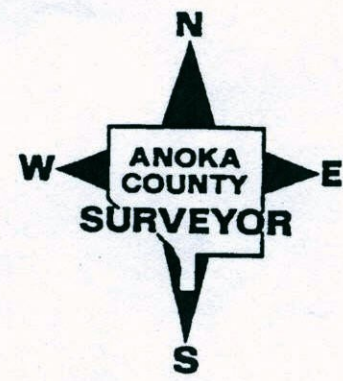
and I further certify that to perpetuate the location of said corner, I did, at the exact location thereof, place a permanent marker consisting of CAST IRON MONUMENT WITH SIGN AND POST ON THE NORTH SIDE (FLUSH) which reference or witness monuments are located in the manner following:



N.A.D.	1983	Co-ordinates
County	Project	Co-ordinates
Northing		176527.2203
Easting		468598.6714
State Plane Co-ordinates		
Y		
X		
Date		5/15/00

BK - SH
4-7-10
TAPED

Revised date	Revised date	Revised date
8-19-82		
7-26-85		
7-1-88		
8-23-93		
5-15-00		



CERTIFICATE OF LOCATION OF GOVERNMENT CORNER

County of Anoka

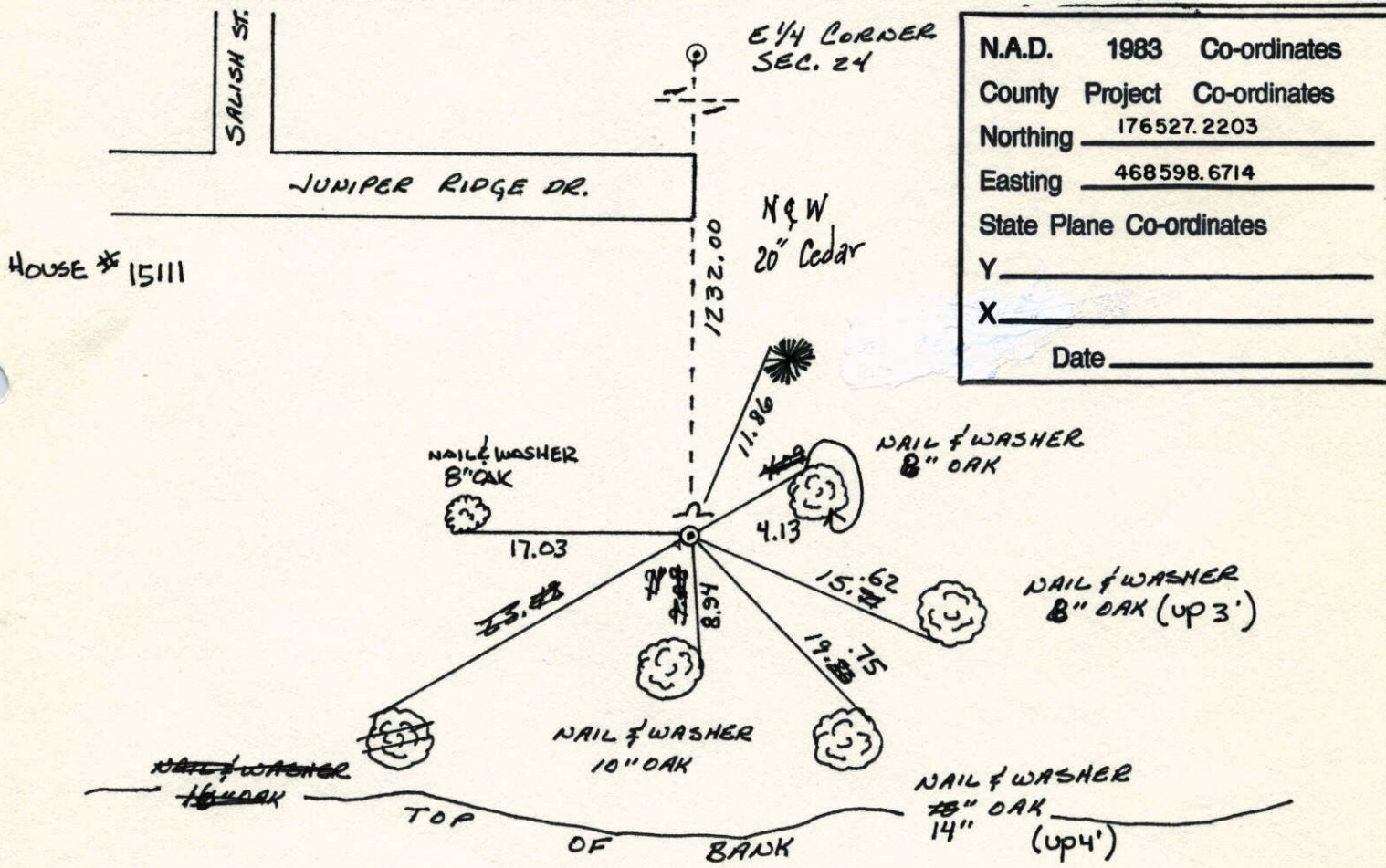
State of Minnesota

WITNESS Corner of Sec. 24 Township 32 Range 25
EAST LINE OF SE 1/4

I hereby certify that on the 23 day of AUGUST, 1963, I found the described corner which was evidenced by AREA RESURVEY

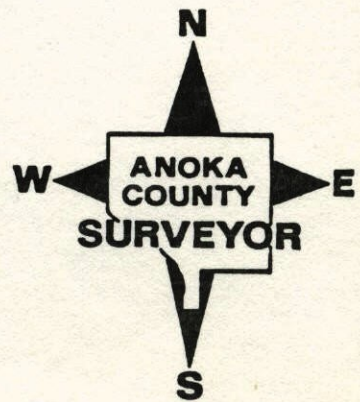
and I further certify that to perpetuate the location of said corner, I did, at the exact location thereof, place a permanent marker consisting of CAST IRON MONUMENT WITH SIGN AND POST ON THE NORTH SIDE

which reference or witness monuments are located in the manner following:

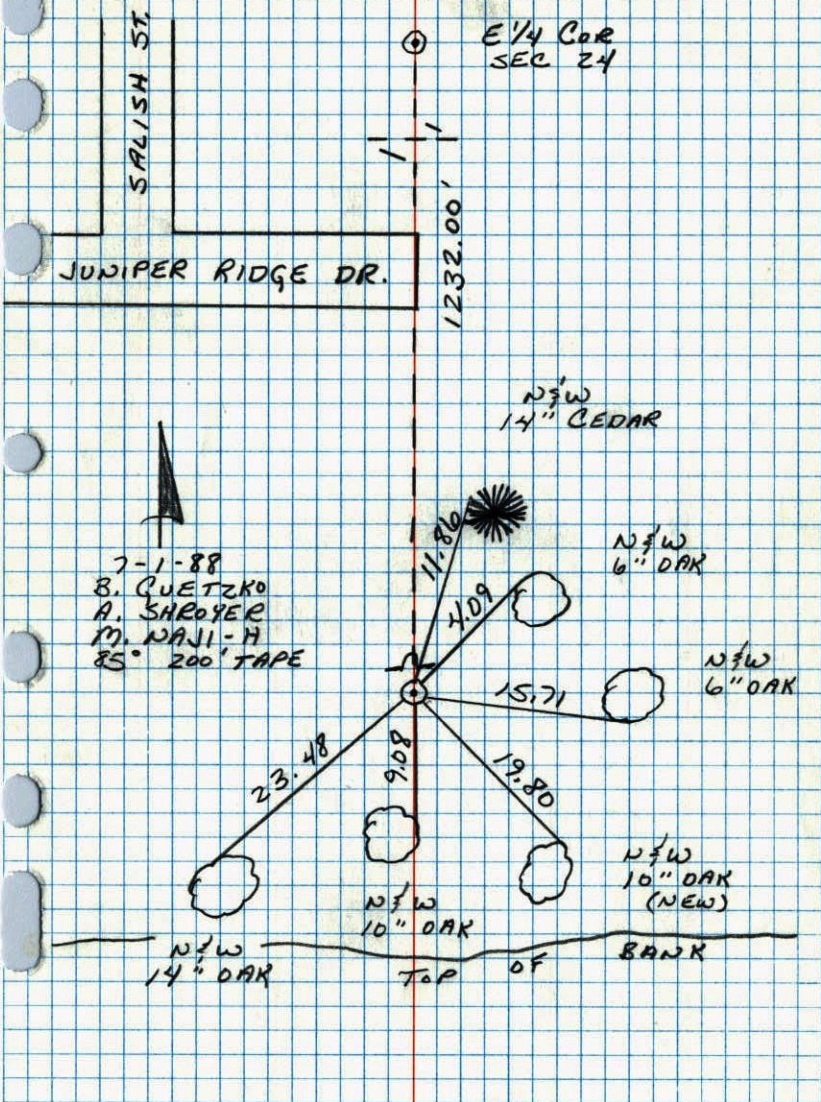


N.A.D.	1983	Co-ordinates
County	Project	Co-ordinates
Northing		<u>176527.2203</u>
Easting		<u>468598.6714</u>
State Plane Co-ordinates		
Y		_____
X		_____
Date _____		

Revised date	Revised date	Revised date
8-19-82		
7-26-85		
7-1-88		
8-23-93		
5-15-00		



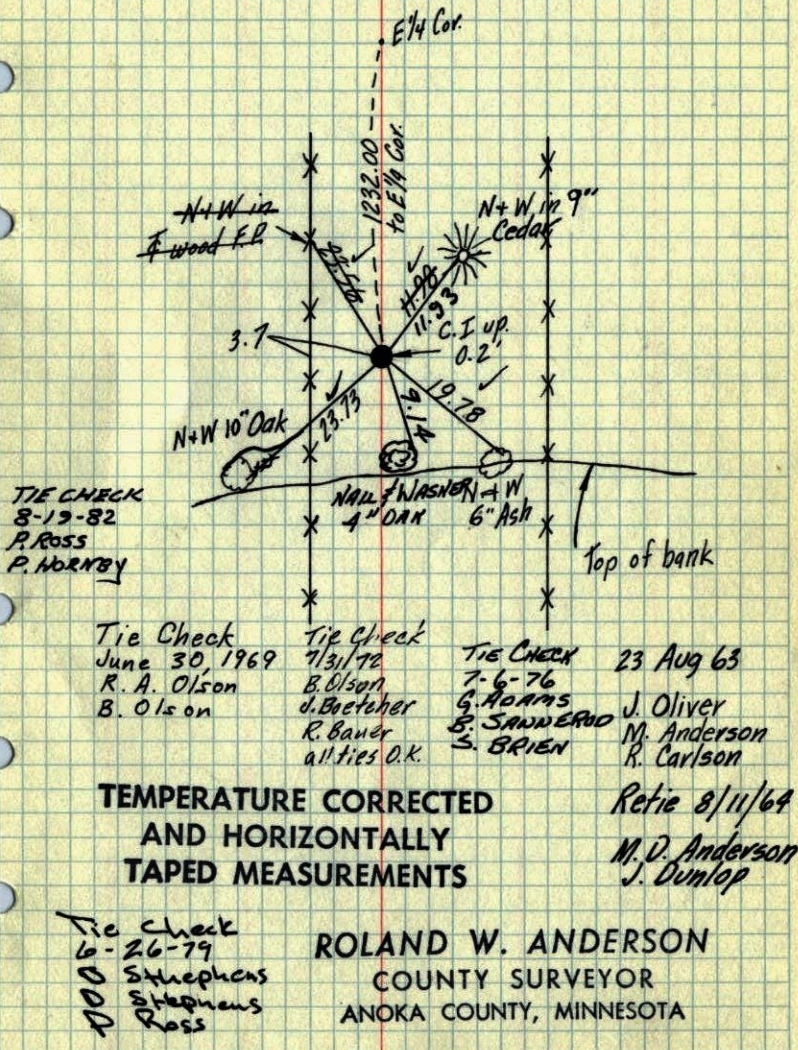
WITNESS CORNER ON THE EAST LINE OF
THE SE 1/4 SEC 24 T32 R25
RETRIEVED CAST IRON MONUMENT.



NO. 448

TELEPHONE

Witness Cor. on E. line, to SE Cor. of
Sec. 24 T32, R25
Set Cast Iron Monument from resurvey



TIE CHECK
8-12-82
P. ROSS
P. HORNBY

Tie Check
June 30, 1969
R. A. Olson
B. Olson

Tie Check
7/31/76
B. Olson
J. Boetger
R. Bauer
all ties O.K.

Tie Check 23 Aug 63
7-6-76
G. Horns
B. SANDERSON
S. BRIEN
J. Oliver
M. Anderson
R. Carlson

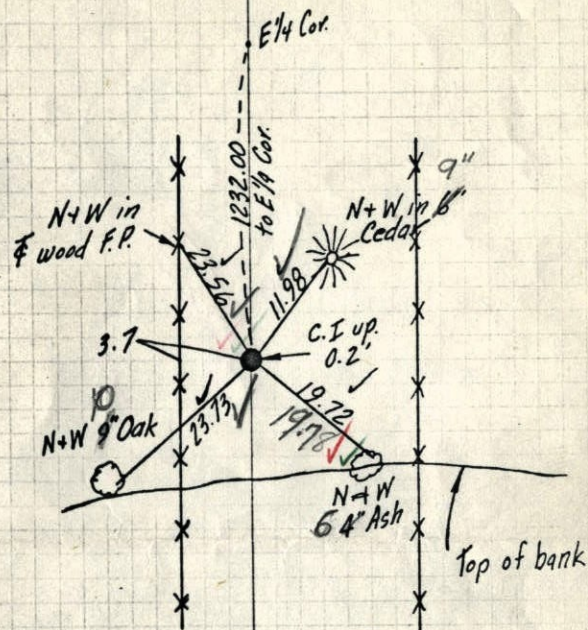
TEMPERATURE CORRECTED
AND HORIZONTALLY
TAPED MEASUREMENTS

Retie 8/11/69
M. D. Anderson
J. Dunlop

Tie Check
6-26-79
Stephens
Stephens
Ross

ROLAND W. ANDERSON
COUNTY SURVEYOR
ANOKA COUNTY, MINNESOTA

Witness Cor. on E. line, to SE Cor. of
Sec. 24 T32, R25
Set Cast Iron Monument from resurvey



23 Aug 63

J. Oliver
M. Anderson
R. Carlson

Retie 8/11/64

M. D. Anderson
J. Dunlop

TEMPERATURE CORRECTED
AND HORIZONTALLY
TAPED MEASUREMENTS

6-30-69

Temp 75

Tape #5

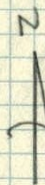
R. A. Olson

B. N. Olson

ROLAND W. ANDERSON
COUNTY SURVEYOR
ANOKA COUNTY, MINNESOTA

to S.E. Corn. of
Witness Corner, on E. line, Sec. 24
T32, R25.

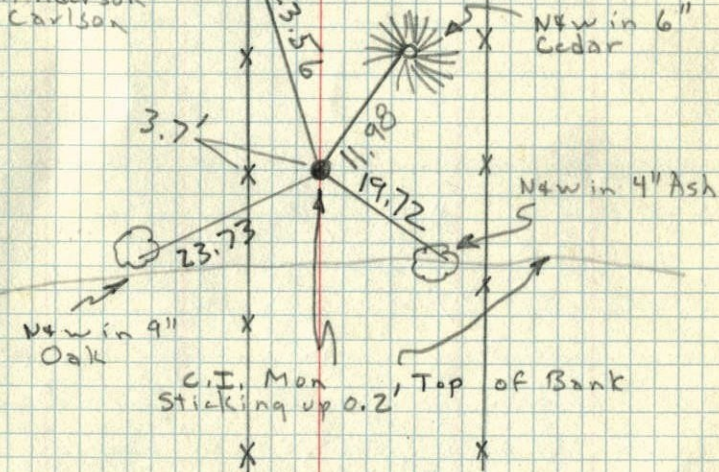
Set cast Iron Monument from Resurvey



23 Aug 63

66° ± 2

J. Oliver
M. D. Anderson
R. Carlson



C.I. Mon
Sticking up 0.2

Top of Bank