

CERTIFICATE OF LOCATION OF GOVERNMENT CORNER

County of Anoka

State of Minnesota

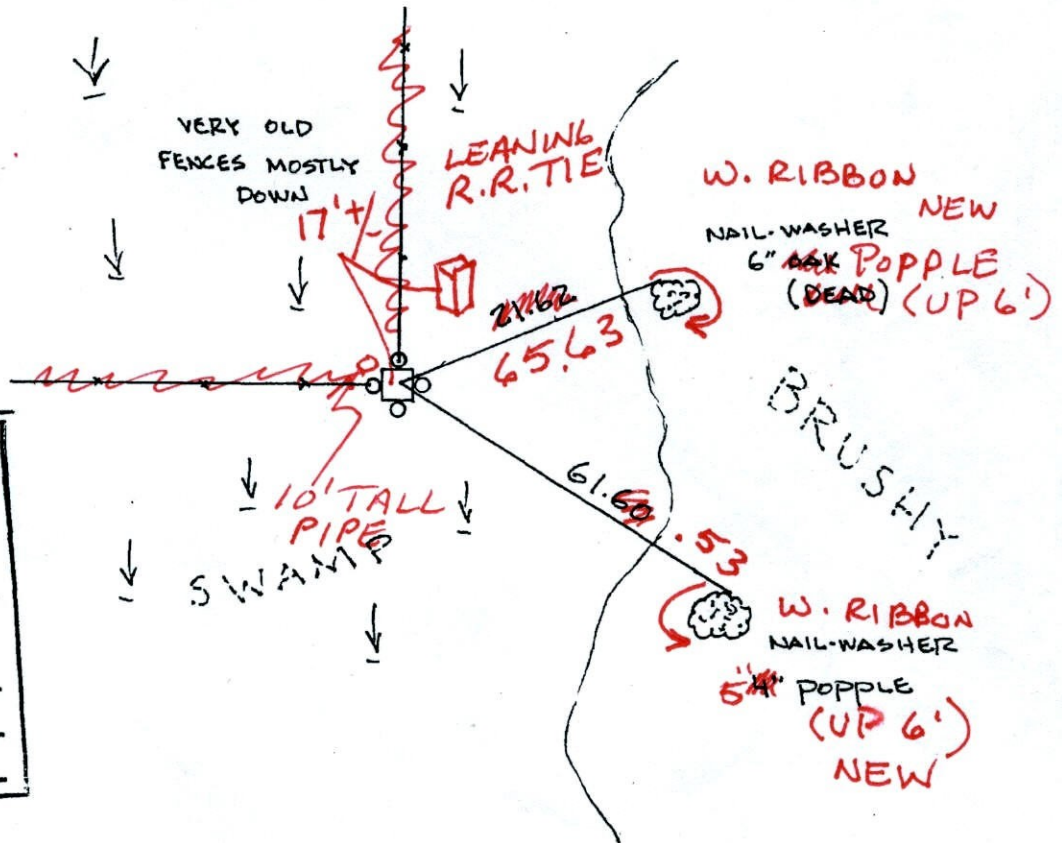
SOUTH 1/4 Corner of Sec. 23 Township 32 Range 25

I hereby certify that on the 15TH day of JANUARY, 1964, I found the described corner which was evidenced by 6" x 6" GRANITE

and I further certify that to perpetuate the location of said corner, I did, at the exact location thereof, place a permanent marker consisting of SAME WITH 1" IRON PIPES ON ALL SIDES

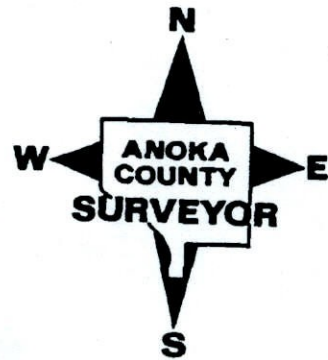
which reference or witness monuments are located in the manner following:

4-22-10
BK-SH
TAPED



N.A.D.	1983	Co-ordinates
County	Project	Co-ordinates
Northing	175098.4287	
Easting	460710.5345	
State Plane Co-ordinates		
Y	_____	
X	_____	
Date	12/29/99	

Revised date	Revised date	Revised date
4-29-82		
7-11-88		
12-29-99		



CERTIFICATE OF LOCATION OF GOVERNMENT CORNER

County of Anoka

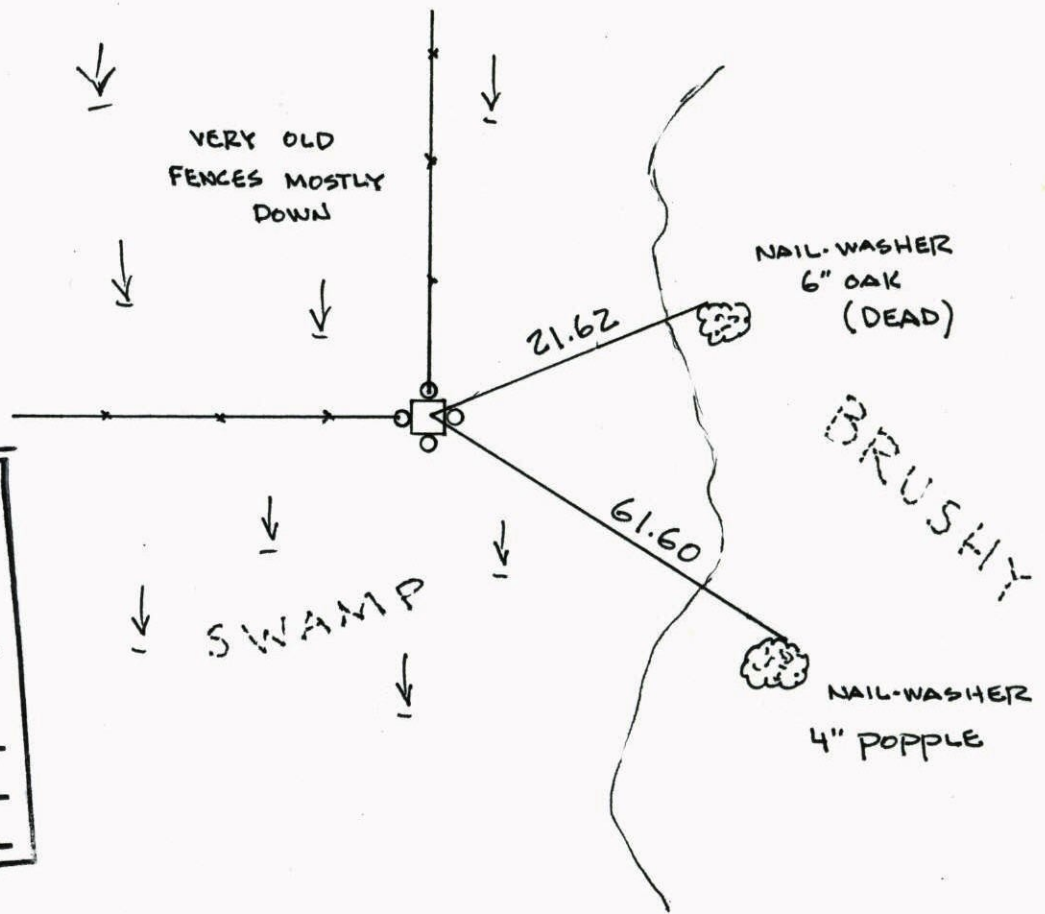
State of Minnesota

SOUTH 1/4 Corner of Sec. 23 Township 32 Range 25

I hereby certify that on the 15TH day of JANUARY, 1964, I found the described corner which was evidenced by 6" X 6" GRANITE

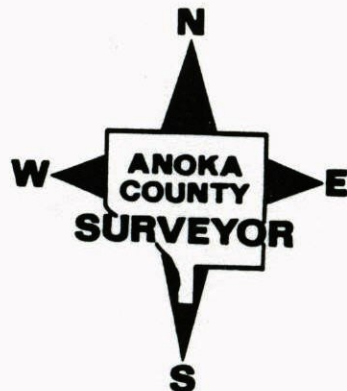
and I further certify that to perpetuate the location of said corner, I did, at the exact location thereof, place a permanent marker consisting of SAME WITH 1" IRON PIPES ON ALL SIDES

which reference or witness monuments are located in the manner following:



N.A.D.	1983	Co-ordinates
County	Project	Co-ordinates
Northing	<u>175098.4287</u>	
Easting	<u>460710.5345</u>	
State Plane Co-ordinates		
Y	_____	
X	_____	
Date	_____	

Revised date	Revised date	Revised date
<u>4-29-82</u>		
<u>7-11-88</u>		
<u>12-29-99</u>		

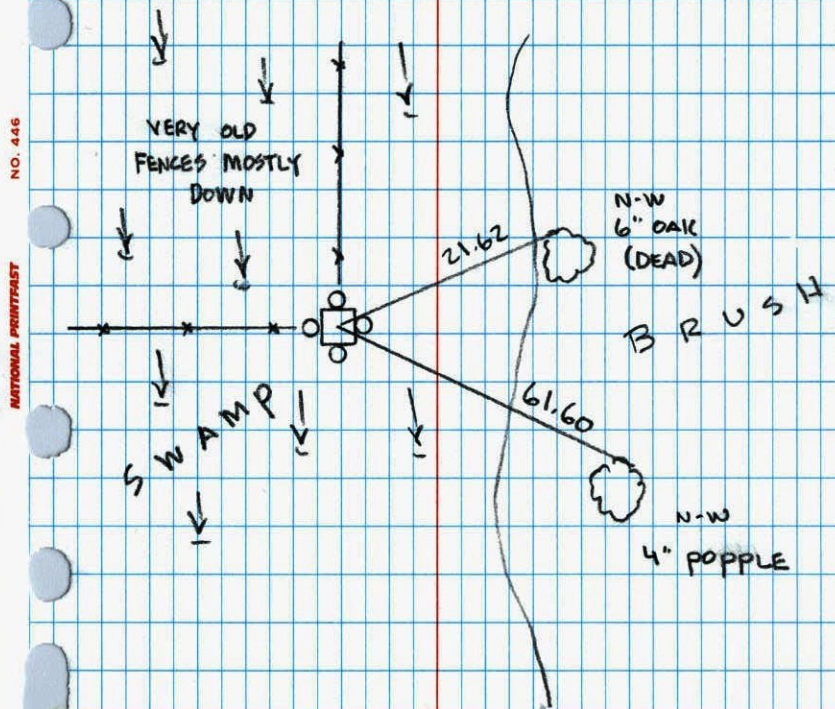


SOUTH 1/4 COR. SEC. 23 T32 R 25

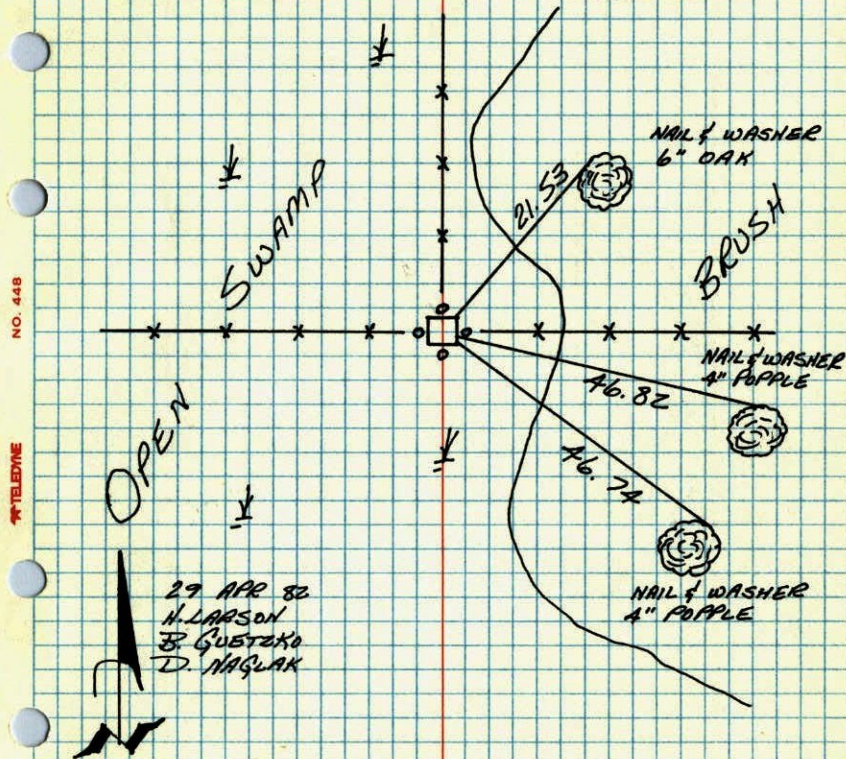
GPS & RETIED GRANITE MONUMENT

WITH 1" IRON PIPES ON ALL
SIDES

12-29-99
J. SIMMER
T. SCHWAB



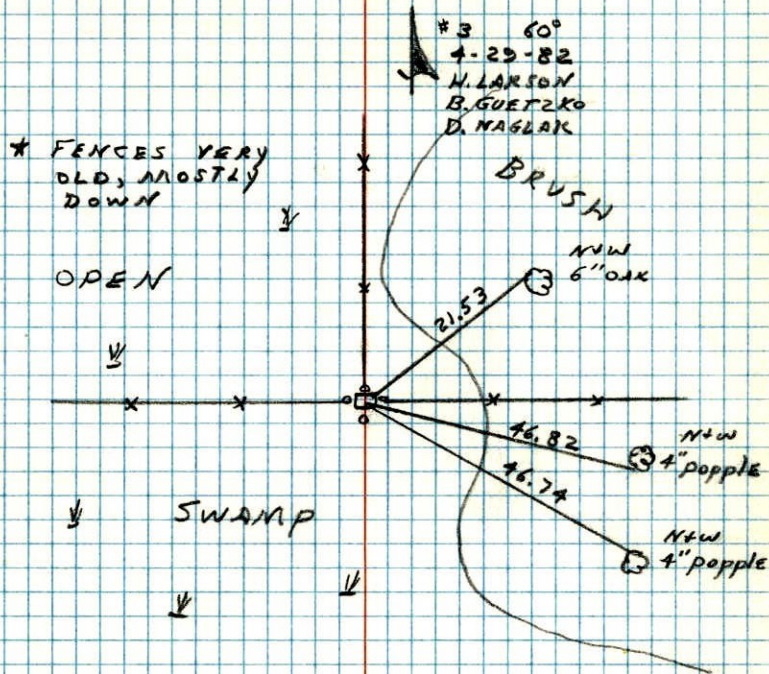
S 1/4 CORNER SECTION 23-T32-R25

FOUND GRANITE MONUMENT LAYING ON IT'S SIDE.
STRAIGHTENED AND RETIED. 1" IRON PIPES ON ALL
SIDES.CHECKED WITH SECTION
CLOSURE OK★ FENCES YEAR OLD,
MOSTLY DOWN

29 APR 82
H. LARSON
B. GUSTAKO
D. HAGLAK

S 1/4 COR. SECTION 23 T32 R25

FOUND GRANITE MONUMENT LAYING
ON ITS SIDE STRAIGHTENED AND
RETIED 1" IRON PIPES ON ALL SIDES



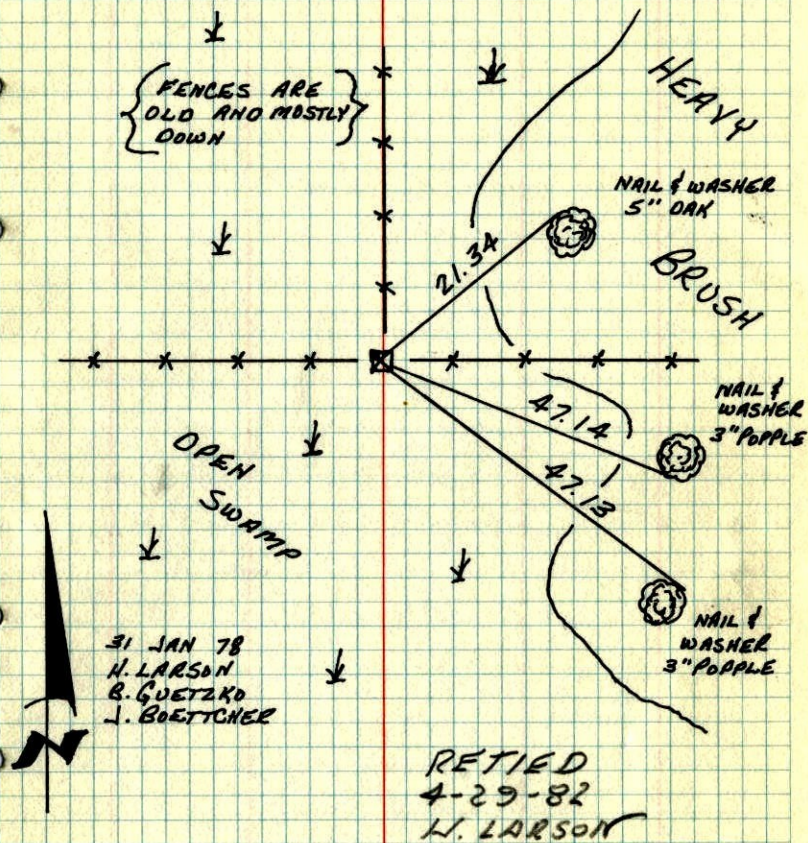
NO. 448

TELETYPE

97

S 1/4 COR. SEC. 23 - T32 - R25

TIED GRANITE MONUMENT FOUND IN 1964. GRANITE
LEANING SLIGHTLY NORTH

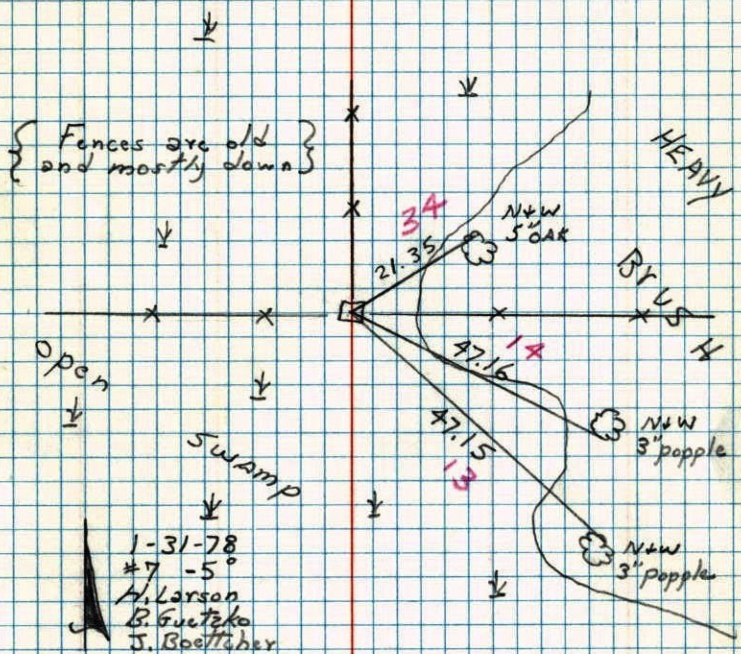


TEMPERATURE CORRECTED
AND HORIZONTALLY
TAPED MEASUREMENTS

ROLAND W. ANDERSON
COUNTY SURVEYOR
ANOKA COUNTY, MINNESOTA

S¹/₄ Cor. Section 23 T32 R25

Tied Granite monument found in
1964. Granite Leaning slightly North.



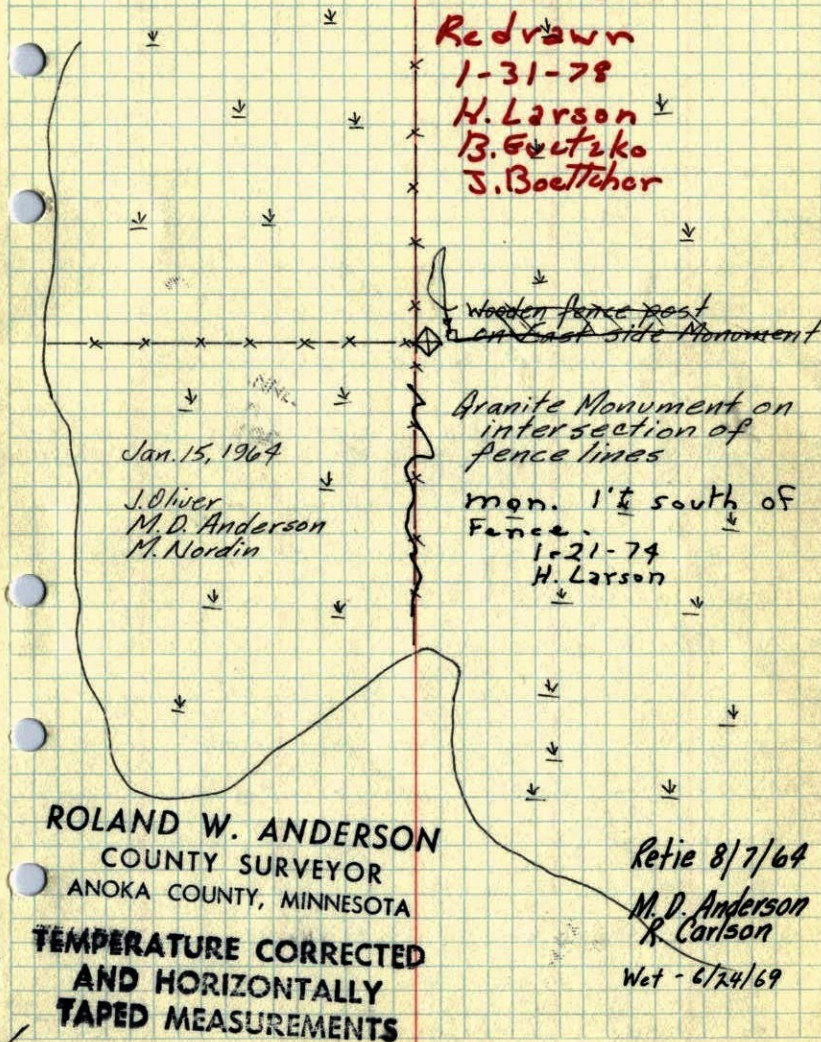
S¹/₄ Cor. Sec. 23-32-25

found 6"x6" Granite Monument up 0.5' in Swamp

Retied and Redrawn

1-31-78

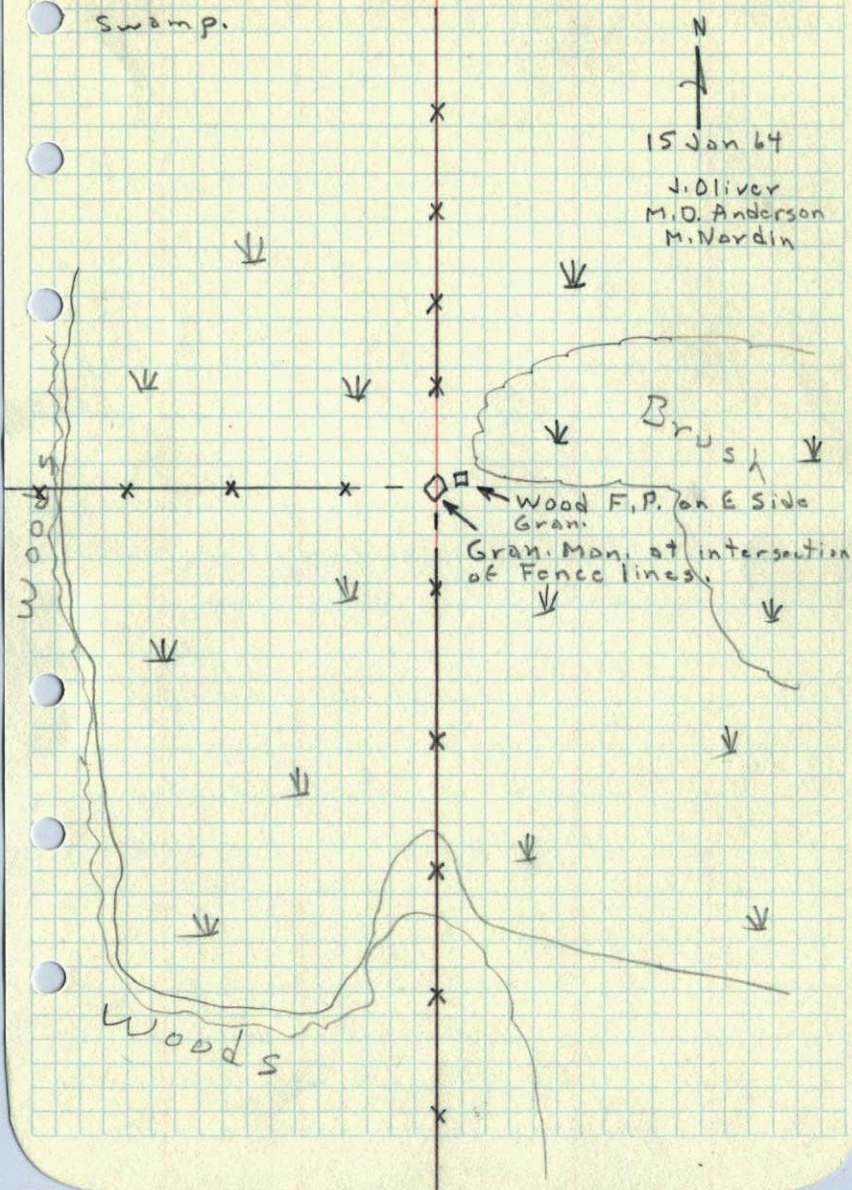
H. Larson
B. Gutzko
J. Boettcher



S¹/₄ Cor. Sec. 23, T32, R25

Found 6" Sq. Granite Man. up 0.5' in

Swamp.



S¹/₄ CORNER OF SECTION 23
TOWNSHIP 32, RANGE 25

FD. GRANITE

MARKED WITH OLD FENCE POST

7/16/63

134/12

Don't
Have

N. C. HOIUM
AND ASSOCIATES, INC.
LAND SURVEYORS

ANOKA, MINNESOTA