

# CERTIFICATE OF LOCATION OF GOVERNMENT CORNER

County of Anoka

State of Minnesota

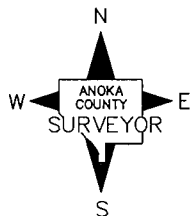
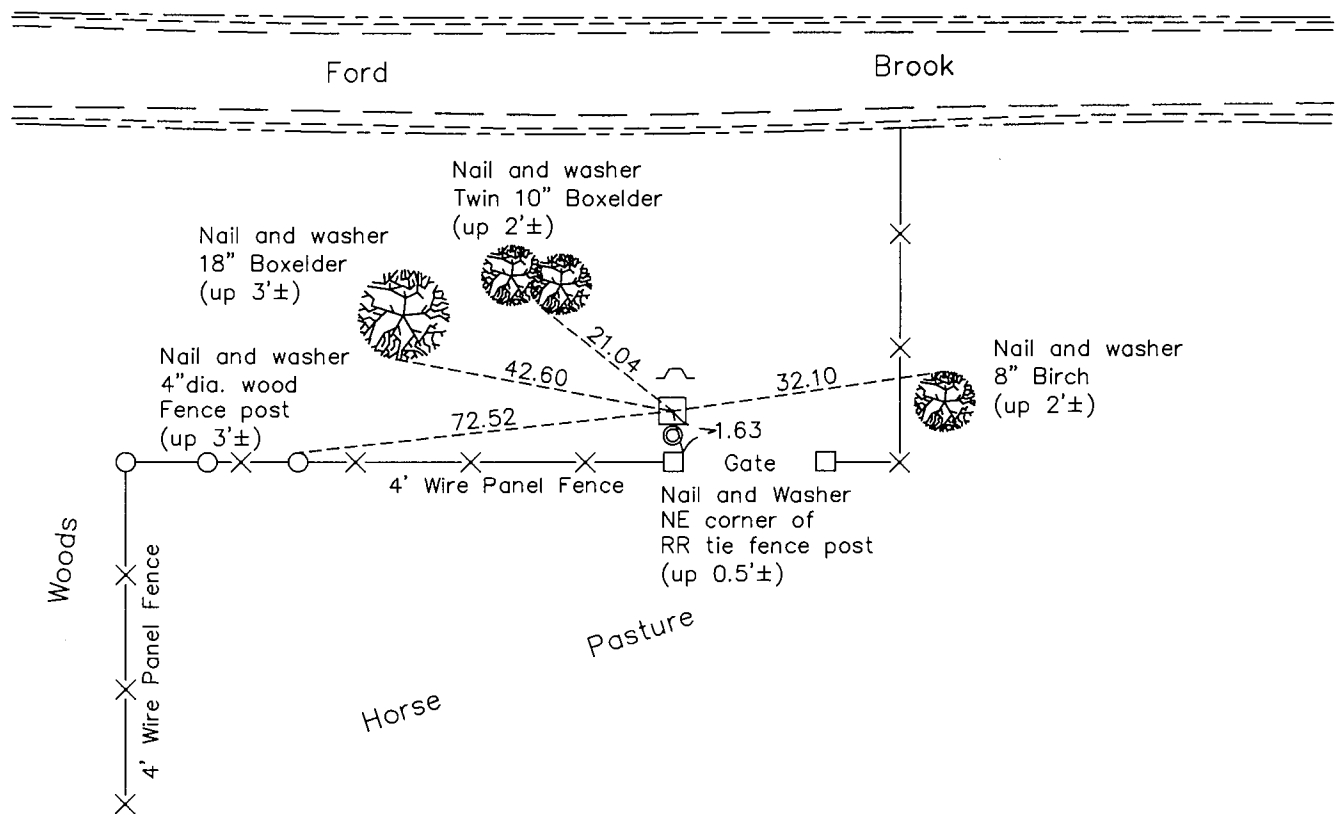
## Northwest Corner of Sec. 1 Township 32 Range 25

On the 11th day of August, 1960, the described corner was evidenced by a granite monument with an iron pipe on the south side

and to perpetuate the location of said corner, at the exact location thereof, a permanent marker was placed consisting of the same granite monument with a sign and post on the north side

AND on the 24th day of July, 2015, said permanent marker was found down 0.1' and the ties were updated

Updated reference ties are as shown below.



Revision Date  
7/14/16

N.A.D. 1983 Coordinates  
(1996 Adjustment)

County Project Coordinates	
Northing	<u>196210.3774</u>
Easting	<u>463421.2738</u>
Date	<u>2/15/00</u>

I hereby certify that this United States public land survey monument record is correct and complete to the best of my knowledge and belief.

*Larty D. Hoium* Date 8/25/16

Larty D. Hoium, Anoka County Surveyor

Minnesota License Number 18165

# HISTORY OF GOVERNMENT CORNER

County of Anoka

State of Minnesota

Northwest Corner of Sec. 1 Township 32 Range 25

**CORNER HISTORY:**

**May 24, 1946** - Harvey Cartwright found a granite monument down 6" and established ties to monument.

August 11, 1960- Found granite monument flush with the surface and with an iron pipe on the south side. Updated ties.

August 10, 1964 - Found granite monument with iron pipe on the south side and updated ties.

June 9, 1969 - Found granite monument with iron pipe on the south side and updated ties.

July 19, 1972 - Found granite monument with iron pipe on the south side and updated ties.

June 18, 1976 - Found granite monument with iron pipe on the south side and updated ties.

June 21, 1979 - Found granite monument with iron pipe on the south side and updated ties.

August 17, 1982 - Found granite monument with iron pipe on the south side and updated ties.

November 10, 1983 - Found granite monument with iron pipe on the south side and updated ties.

July 30, 1985 - Found granite monument with iron pipe on the south side and updated ties.

July 5, 1988 - Found granite monument with iron pipe on the south side and updated ties.

August 16, 1993 - Found granite monument with iron pipe on the south side and updated ties.

February 15, 2000 - Found granite monument with iron pipe on the south side and a sign and post on the north side and established NAD 1983 ( 1996 Adjustment) Anoka County Project Coordinates by Static GPS methods. Updated ties.

May 14, 2010 - Found granite monument down 0.1'± with iron pipe on the south side and a sign and post on the north side. Updated ties.

July 24, 2015 - Found granite monument down 0.1'± with iron pipe on the south side and a sign and post on the north side. Updated ties.