

CERTIFICATE OF LOCATION OF GOVERNMENT CORNER

County of Anoka

State of Minnesota

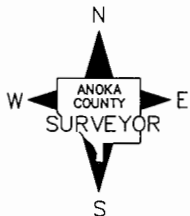
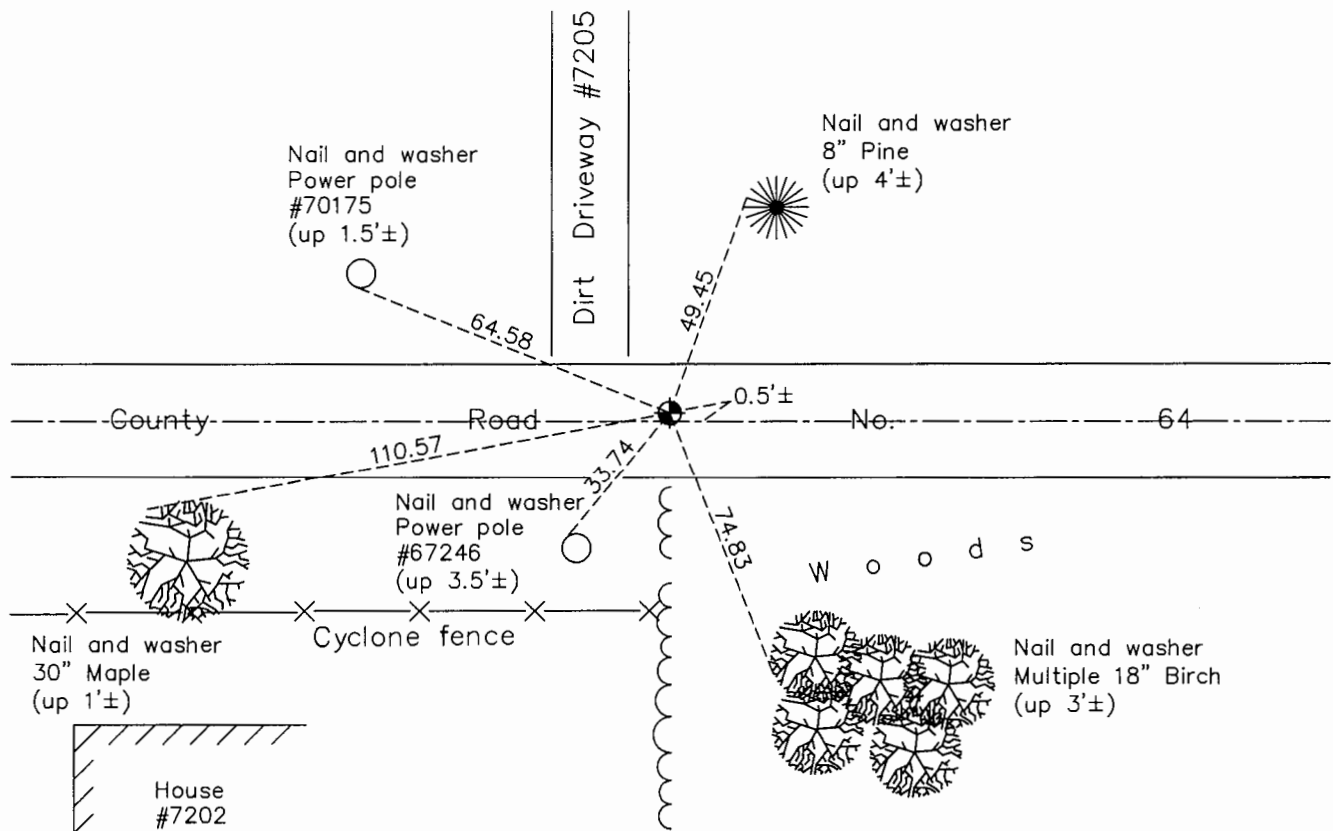
Northeast Corner of Sec. 4 Township 32 Range 25

On the 14th day of May, 1969, the described corner was evidenced by a railroad spike

and to perpetuate the location of said corner, at the exact location thereof, a permanent marker was placed consisting of a cast iron monument

AND on the 24th day of July, 2015, said permanent marker was found down 0.3'±, raised to the surface and the ties were updated

Updated reference ties are as shown below.



N.A.D. 1983 Coordinates
(1996 Adjustment)

County Project Coordinates	
Northing	<u>196317.3500</u>
Easting	<u>452960.2036</u>
Date	<u>12/30/99</u>

Revision Date

7/14/16

I hereby certify that this United States public land survey monument record is correct and complete to the best of my knowledge and belief.

Larry D. Hoium Date 8/15/16

Larry D. Hoium, Anoka County Surveyor

Minnesota License Number 18165

HISTORY OF GOVERNMENT CORNER

County of Anoka

State of Minnesota

Northeast Corner of Sec. 4 Township 32 Range 25

CORNER HISTORY:

No date - Anoka County Highway Department found spike. Established tie to spike.

May 14, 1969 - Found railroad spike in centerline of blacktop road and verified location using area resurvey. Replaced spike with cast iron monument and established ties to monument.

July 25, 1972 - Found cast iron monument and updated ties.

October 17, 1975 - Found cast iron monument and raised it.

June 21, 1976 - Found cast iron monument and updated ties.

June 15, 1979 - Found cast iron monument and updated ties.

August 13, 1982 - Found cast iron monument and updated ties.

July 19, 1985 - Found cast iron monument and updated ties.

June 6, 1988 - Found cast iron monument and updated ties.

August 4, 1993 - Found cast iron monument and updated ties.

December 30, 1999 - Found cast iron monument and established NAD 1983 (1996 Adjustment) Anoka County Project Coordinates by Static GPS methods. Updated ties.

April 27, 2010 - Found cast iron monument on centerline of road and updated ties.

July 24, 2015 - Found cast iron monument 0.5'± north of centerline of road and down 0.3'±. Raised monument to flush with the surface and updated ties. Verified location of corner by VRS GPS methods.