

# CERTIFICATE OF LOCATION OF GOVERNMENT CORNER

County of Anoka

State of Minnesota

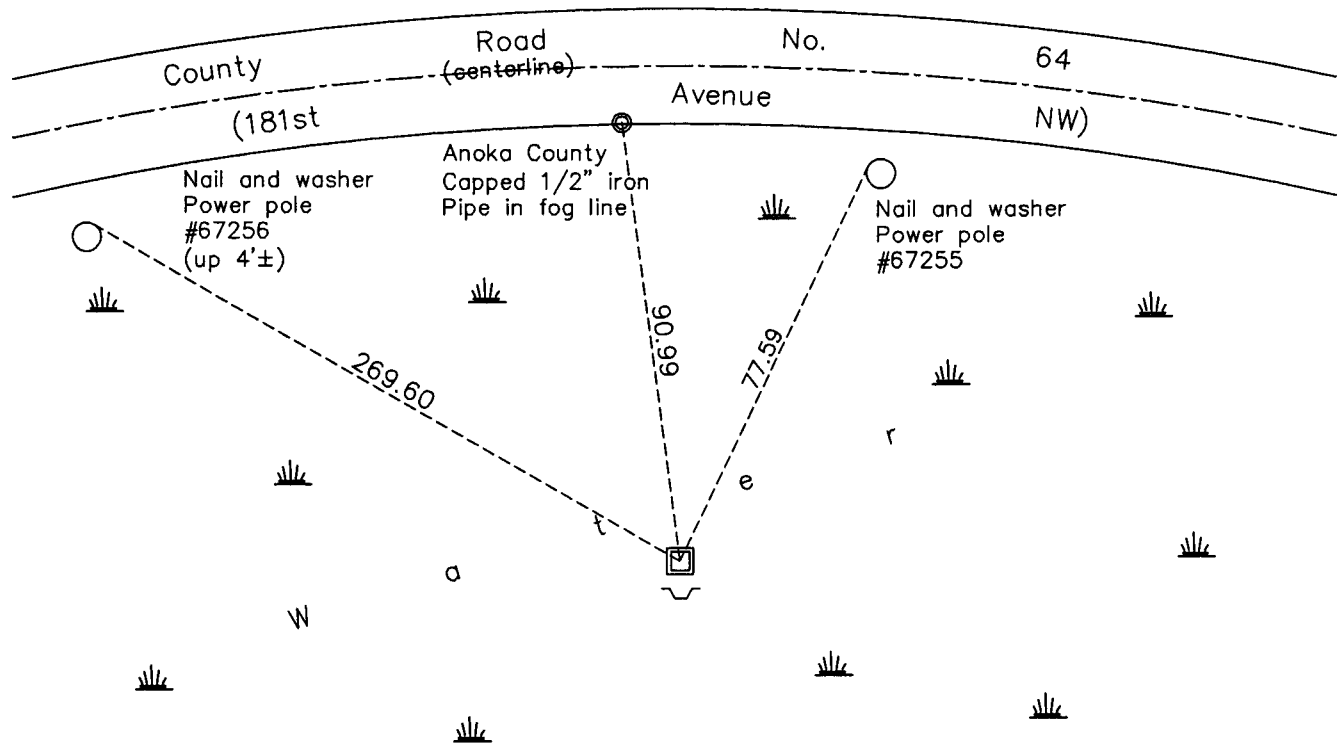
## North 1/4 Corner of Sec. 4 Township 32 Range 25

On the 20th day of November, 1970, the described corner was evidenced by a small iron pipe

and to perpetuate the location of said corner, at the exact location thereof, a permanent marker was placed consisting of a red and white iron pipe

AND on the 17th day of February, 2011, said permanent marker was rusted off at water line.  
Set 2" sq. steel Telspar mont. up 2.5'± over iron pipe w/ punched cap. Sign & post on south side.

Updated reference ties are as shown below.



ANOKA COUNTY SURVEYOR

Revision Date

3/10/11

N.A.D. 1983 Coordinates  
(1996 Adjustment)

County Project Coordinates	
Northing	196330.1071
Easting	450333.1280
Date	12/30/99

I hereby certify that this United States public land survey monument record is correct and complete to the best of my knowledge and belief.

*Larry D. Hoium*      Date 3/10/11

\_\_\_\_\_  
Larry D. Hoium, Anoka County Surveyor

Minnesota License Number 18165

# HISTORY OF GOVERNMENT CORNER

County of Anoka

State of Minnesota

North 1/4 Corner of Sec. 4 Township 32 Range 25

## **CORNER HISTORY:**

**November 20, 1970** - Found small iron pipe when performing area resurvey. Replaced iron pipe with a red and white iron pipe and established ties to iron pipe.

June 21, 1976 - Found red and white iron pipe and updated ties.

June 18, 1979 - Found red and white iron pipe up 3'± and updated ties.

August 13, 1982 - Found red and white iron pipe and updated ties.

July 22, 1985 - Found red and white iron pipe and updated ties.

July 5, 1988 - Found red and white iron pipe and updated ties.

August 4, 1993 - Found red and white iron pipe and updated ties.

December 30, 1999 - Found red and white iron pipe and established NAD 1983 (1996 Adjustment) Anoka County Project Coordinates by Static GPS methods. Updated ties.

February 17, 2011 - Found 1.5" red and white iron pipe rusted off at water line. Set red and white 2" square steel Telespar monument over iron pipe and set up 2.5'± with a 'County Surveyor' cap and punchmark. A sign and post was set up 7'± on south side of monument and updated ties. Verified location of corner by VRS GPS methods.