

CERTIFICATE OF LOCATION OF GOVERNMENT CORNER

County of Anoka

State of Minnesota

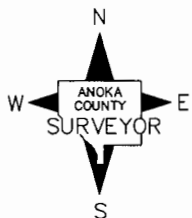
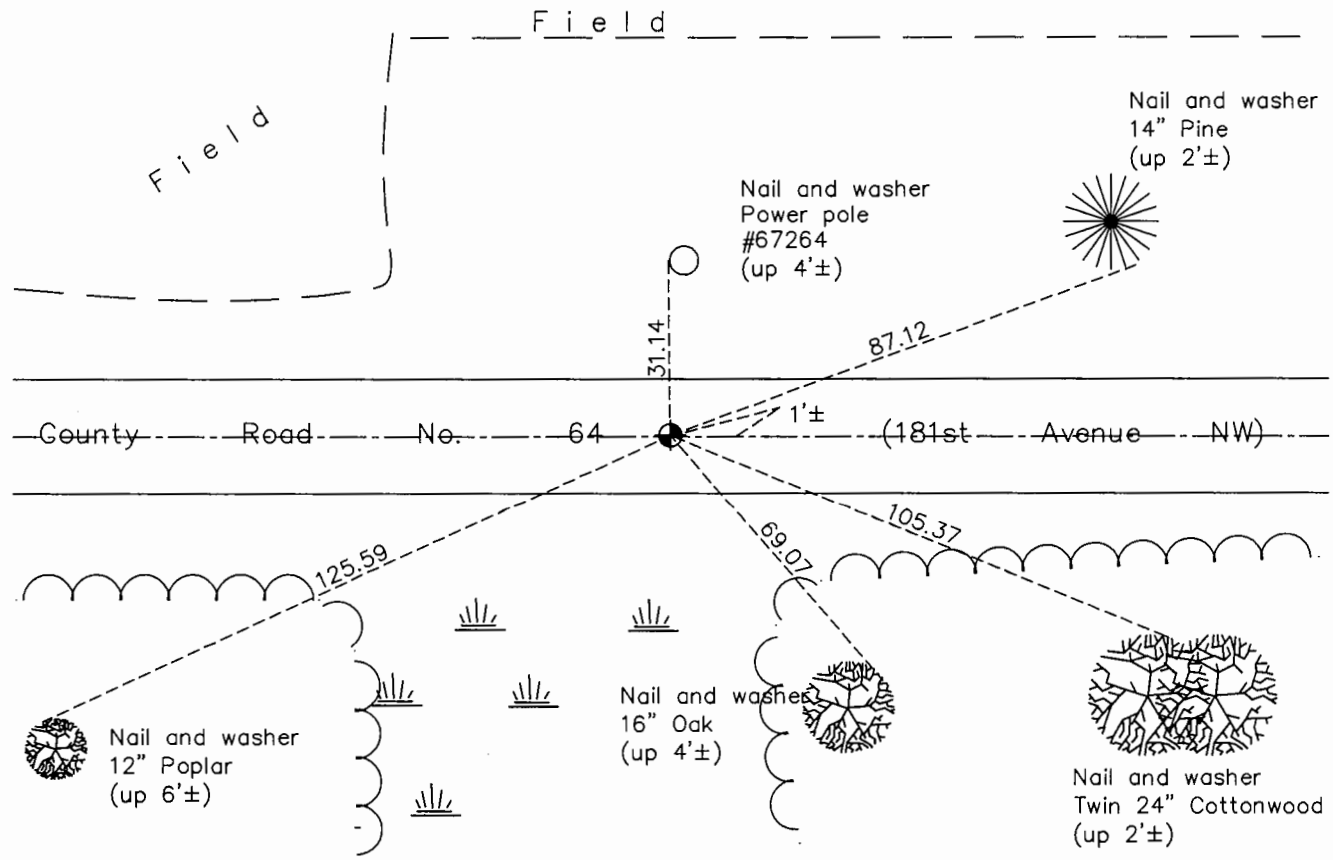
Northeast Corner of Sec. 5 Township 32 Range 25

On the 14th day of May, 1969, the described corner was evidenced by area resurvey

and to perpetuate the location of said corner, at the exact location thereof, a permanent marker was placed consisting of a cast iron monument

AND on the 17th day of July, 2015, said permanent marker was found down 0.3'±,
Raised to the surface and the ties were updated

Updated reference ties are as shown below.



Revision Date

7/14/16

N.A.D. 1983 Coordinates
(1996 Adjustment)

County Project Coordinates	
Northing	<u>196341.2036</u>
Easting	<u>447726.5638</u>
Date	<u>12/29/99</u>

I hereby certify that this United States public land survey monument record is correct and complete to the best of my knowledge and belief.

Larry D. Hoium Date 8/25/16

Larry D. Hoium, Anoka County Surveyor

Minnesota License Number 18165

HISTORY OF GOVERNMENT CORNER

Page No. 10

County of Anoka

State of Minnesota

Northeast Corner of Sec. 5 Township 32 Range 25

CORNER HISTORY:

May 14, 1969 - Set cast iron monument in centerline of blacktop road using area resurvey and established ties to monument.

July 17, 1972 - Found cast iron monument and updated ties. Set P.K. nails north and east of monument.

October 16, 1975 - Found cast iron monument and raised it to flush with the surface. Set P.K. nails 2.00' north and east of monument and updated ties.

June 21, 1976 - Found cast iron monument and updated ties.

June 15, 1979 - Found cast iron monument and updated ties.

August 13, 1982 - Found cast iron monument and updated ties.

November 10, 1983 - Found cast iron monument and updated ties.

July 19, 1985 - Found cast iron monument and updated ties.

June 6, 1988 - Found cast iron monument and updated ties.

August 4, 1993 - Found cast iron monument and updated ties.

December 29, 1999 - Found cast iron monument and established NAD 1983 (1996 Adjustment) Anoka County Project Coordinates by Static GPS methods. Updated ties.

April 21, 2010 - Found cast iron monument and updated ties.

July 17, 2015 - Found cast iron monument 1'± north of centerline of road and down 0.3'±. Raised monument to flush with the surface and updated ties. Verified location of corner by VRS GPS methods.