

CERTIFICATE OF LOCATION OF GOVERNMENT CORNER

County of Anoka

State of Minnesota

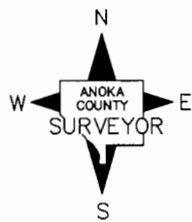
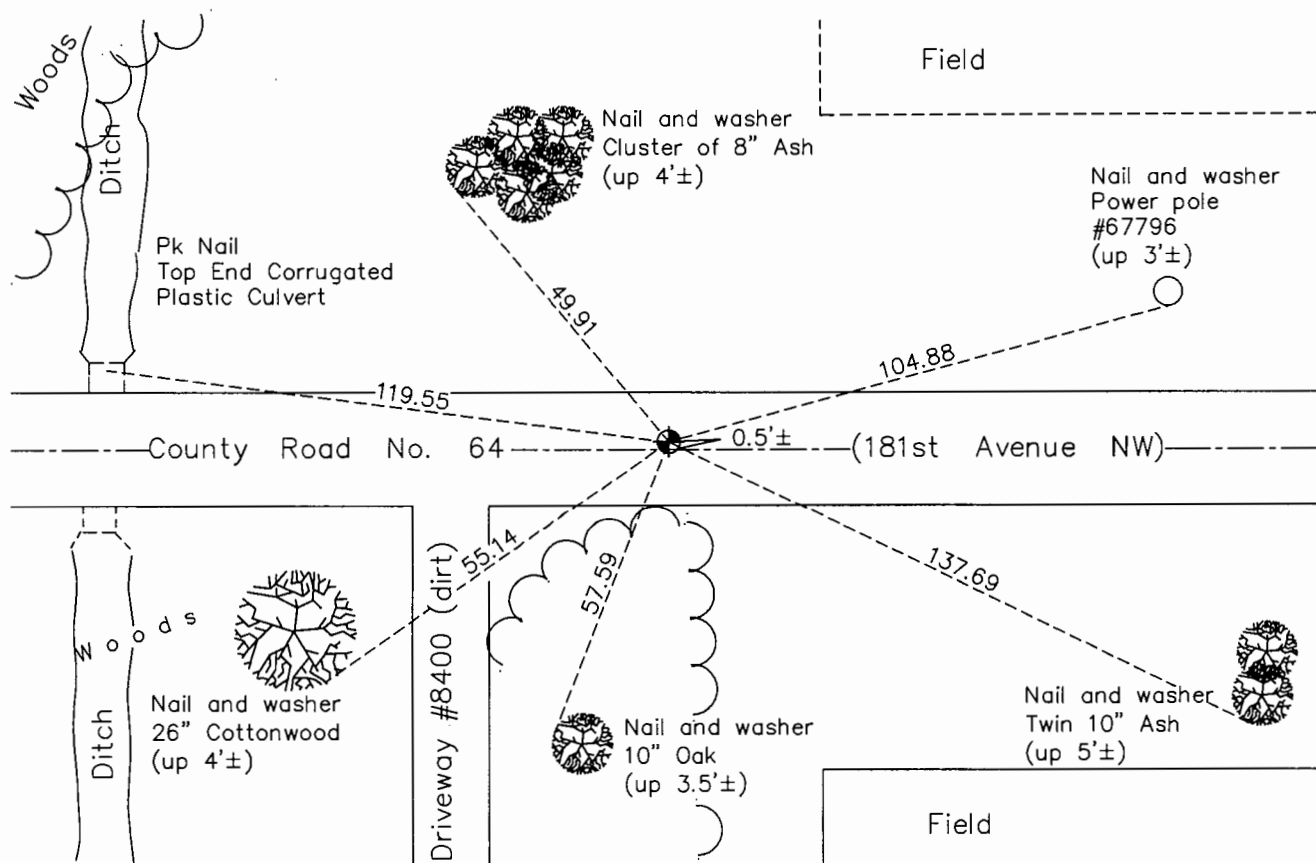
North $\frac{1}{4}$ Corner of Sec. 5 Township 32 Range 25

On the 14th day of May, 1969, the described corner was evidenced by area resurvey

and to perpetuate the location of said corner, at the exact location thereof, a permanent marker was placed consisting of a cast iron monument

AND on the day of July, 2015, said permanent marker was found 0.5'± North of
Center Line and the ties were updated

Updated reference ties are as shown below.



Revision Date
7/18/16

N.A.D. 1983 Coordinates
 (1996 Adjustment)

County Project Coordinates	
Northing	196362.7135
Easting	445104.9185
Date	12/30/99

I hereby certify that this United States public land survey monument record is correct and complete to the best of my knowledge and belief.

Larry D. Hoium Date 8/25/16

Larry D. Hoium, Anoka County Surveyor
 Minnesota License Number 18165

HISTORY OF GOVERNMENT CORNER

County of Anoka

State of Minnesota

North 1/4 Corner of Sec. 5 Township 32 Range 25

CORNER HISTORY:

May 14, 1969 - Set cast iron monument flush with the surface in centerline of road using area resurvey and established ties to monument.

July 17, 1972 - Found cast iron monument and updated ties.

October 16, 1975 - Raised cast iron monument and updated ties. Set P.K. nails 2.00' north and east.

June 21, 1976 - Found cast iron monument and updated ties.

June 15, 1979 - Found cast iron monument and updated ties.

August 13, 1982 - Found cast iron monument and updated ties.

July 19, 1985 - Found cast iron monument and updated ties.

June 6, 1988 - Found cast iron monument and updated ties.

August 6, 1993 - Found cast iron monument and updated ties.

December 30, 1999 - Found cast iron monument and established NAD 1983 (1996 Adjustment) Anoka County Project Coordinates by Static GPS methods. Updated ties.

April 21, 2010 - Found cast iron monument and updated ties.

July 2015 - Found cast iron monument 0.5'± north of centerline and updated ties. Verified location of corner by VRS GPS methods.