

CERTIFICATE OF LOCATION OF GOVERNMENT CORNER

County of Anoka

State of Minnesota

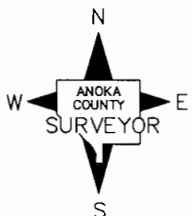
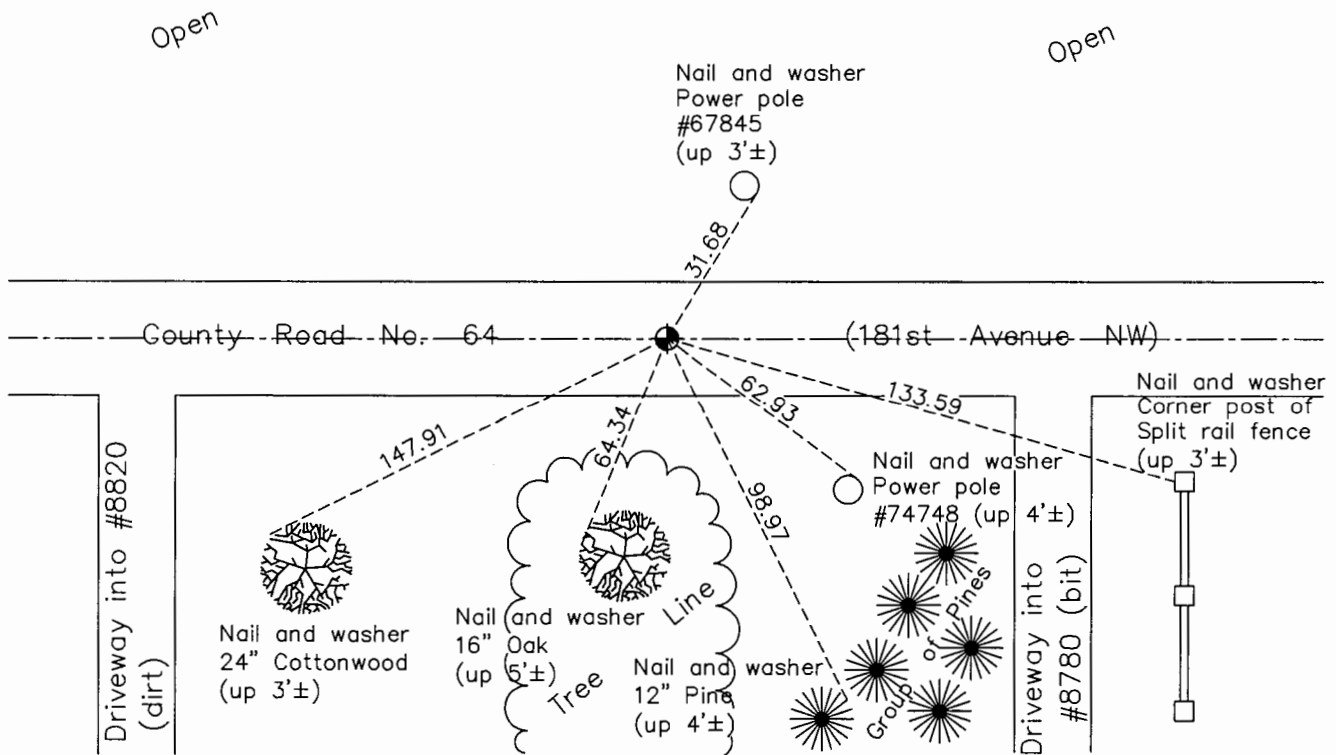
Northeast Corner of Sec. 6 Township 32 Range 25

On the 5th day of March, 1969, the described corner was evidenced by area resurvey

and to perpetuate the location of said corner, at the exact location thereof, a permanent marker was placed consisting of a cast iron monument

AND on the 18th day of June, 2015, said permanent marker was found flush on Center line and the ties were updated

Updated reference ties are as shown below.



Revision Date
8/18/16

N.A.D. 1983 Coordinates
(1996 Adjustment)

County Project Coordinates	
Northing	<u>196375.1079</u>
Easting	<u>442493.7952</u>
Date	<u>12/30/99</u>

I hereby certify that this United States public land survey monument record is correct and complete to the best of my knowledge and belief.

Larry D. Hoium Date 8/29/16

Larry D. Hoium, Anoka County Surveyor

Minnesota License Number 18165

HISTORY OF GOVERNMENT CORNER

County of Anoka

State of Minnesota

Northeast Corner of Sec. 6 Township 32 Range 25

CORNER HISTORY:

March 5, 1969 - Set P.K. nail in centerline of road and 6'± west of tree line to the south using area resurvey and established ties to monument.

August 28, 1969 - Replaced P.K. nail with a cast iron monument set flush with the surface. Set P.K. nails 2.00' north and east and updated ties.

July 17, 1972 - Found cast iron monument and updated ties.

October 16, 1975 - Raised cast iron monument and updated ties.

June 21, 1976 - Found cast iron monument and updated ties.

June 15, 1979 - Found cast iron monument and updated ties.

August 13, 1982 - Found cast iron monument and updated ties.

July 22, 1985 - Found cast iron monument and updated ties.

June 6, 1988 - Found cast iron monument and updated ties.

June 6, 1993 - Found cast iron monument and updated ties.

December 30, 1999 - Found cast iron monument and established NAD 1983 (1996 Adjustment) Anoka County Project Coordinates by Static GPS methods. Updated ties.

May 18, 2010 - Found cast iron monument flush with the surface and updated ties.

June 18, 2015 - Found cast iron monument flush with the surface and on centerline. Updated ties and verified location of corner by VRS GPS methods.