

CERTIFICATE OF LOCATION OF GOVERNMENT CORNER

County of Anoka

State of Minnesota

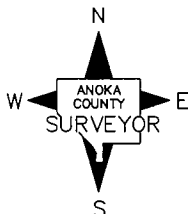
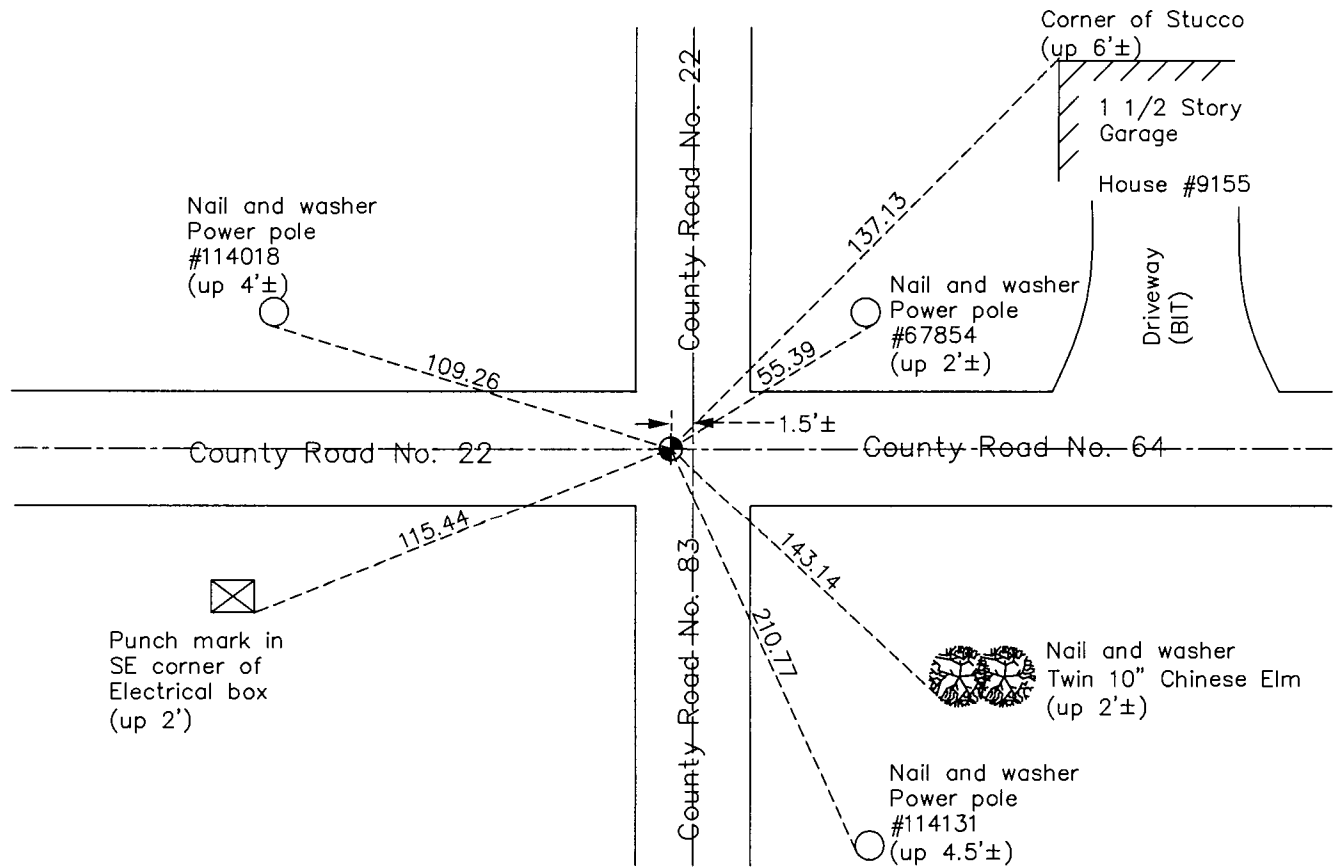
North 1/4 Corner of Sec. 6 Township 32 Range 25

On the 5th day of March, 1969, the described corner was evidenced by area resurvey

and to perpetuate the location of said corner, at the exact location thereof, a permanent marker was placed consisting of a cast iron monument

AND on the 18th day of June, 2015, said permanent marker was found and the ties were updated

Updated reference ties are as shown below.



N.A.D. 1983 Coordinates
(1996 Adjustment)

County Project Coordinates	
Northing	<u>196373.2065</u>
Easting	<u>439857.8601</u>
Date	<u>9/01/99</u>

Revision Date
7/18/16

I hereby certify that this United States public land survey monument record is correct and complete to the best of my knowledge and belief.

Larry D. Hoium Date 8/29/16

Larry D. Hoium, Anoka County Surveyor
Minnesota License Number 18165

HISTORY OF GOVERNMENT CORNER

County of Anoka

State of Minnesota

North 1/4 Corner of Sec. 6 Township 32 Range 25

CORNER HISTORY:

March 5, 1969 - Set bridge spike using area resurvey and established ties to monument.

July 17, 1972 - Found cast iron monument with P.K. nails north and east (date set unknown) and updated ties.

September 11, 1972 - Raised cast iron monument and updated ties.

October 16, 1975 - Raised cast iron monument with P.K. nails 2.00' north and east and updated ties.

June 21, 1976 - Found cast iron monument and updated ties.

June 15, 1979 - Found cast iron monument and updated ties.

August 13, 1982 - Found cast iron monument and updated ties.

July 22, 1985 - Found cast iron monument and updated ties.

June 6, 1988 - Found cast iron monument and updated ties.

August 4, 1993 - Found cast iron monument and updated ties.

September 1, 1999 - Found cast iron monument 5'± west of centerline-centerline and established NAD 1983 (1996 Adjustment) Anoka County Project Coordinates by Static GPS methods. Updated ties.

June 12, 2000 - Set construction ties and removed cast iron monument prior to road construction.

June 22, 2001 - Found cast iron monument (date reset unknown) and verified location of corner by Static GPS methods. Updated ties.

April 21, 2010 - Found cast iron monument and updated ties.

June 18, 2015 - Found cast iron monument on east-west centerline and 1.5'± west of north-south centerline. Updated ties and verified location of corner by VRS GPS methods.