

CERTIFICATE OF LOCATION OF GOVERNMENT CORNER

County of Anoka

State of Minnesota

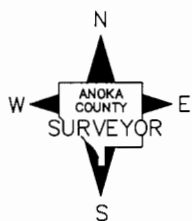
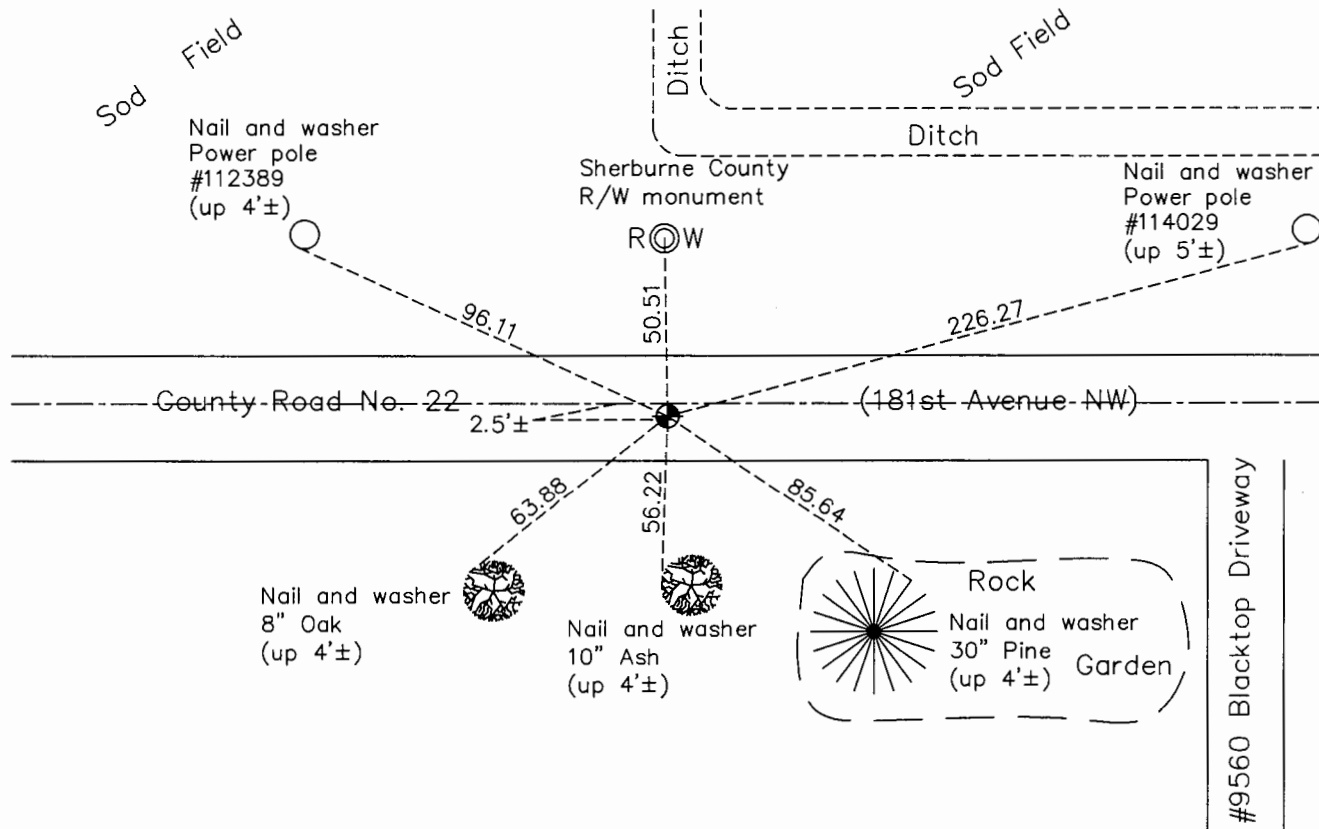
Northwest Corner of Sec. 6 Township 32 Range 25

On the 20th day of August, 1968, the described corner was evidenced by a granite monument with iron cap

and to perpetuate the location of said corner, at the exact location thereof, a permanent marker was placed consisting of a Sherburne County cast iron monument on top of the granite monument

AND on the 18th day of June, 2015, said permanent marker was found 2.5'± south of Center line and the ties were updated

Updated reference ties are as shown below.



Revision Date
8/18/16

N.A.D. 1983 Coordinates
(1996 Adjustment)

County Project Coordinates	
Northing	196369.1744
Easting	437132.6416
Date	9/01/99

I hereby certify that this United States public land survey monument record is correct and complete to the best of my knowledge and belief.

Larry D. Hoium Date 8/25/16

Larry D. Hoium, Anoka County Surveyor

Minnesota License Number 18165

HISTORY OF GOVERNMENT CORNER

County of Anoka

State of Minnesota

Northwest Corner of Sec. 6 Township 32 Range 25

CORNER HISTORY:

August 20, 1968 - Found granite monument with iron cap and raised section lines and letters down 1.3'±. Set 1/2" iron pipe flush with the surface on top of monument and set P.K. nails 2.00' north and east of monument. Established ties to monument.

June 11, 1969 - Set cast iron monument flush with the surface on top of granite monument with P.K. nails 2.00' north and east of monument. Updated ties.

July 17, 1972 - Found cast iron monument and updated ties.

October 16, 1975 - Raised cast iron monument and updated ties.

June 21, 1976 - Found cast iron monument and updated ties.

June 15, 1979 - Found cast iron monument and updated ties.

August 13, 1982 - Found cast iron monument and updated ties.

July 22, 1985 - Found cast iron monument and updated ties.

June 6, 1986 - Found cast iron monument and updated ties.

August 4, 1993 - Found cast iron monument and updated ties.

September 1, 1999 - Found cast iron monument and established NAD 1983 (1996 Adjustment) Anoka County Project Coordinates by Static GPS methods. Updated ties.

June 13, 2000 - Sherburne County removed cast iron monument. Found granite monument with iron top and set construction ties prior to road construction.

September 6, 2000 - Found cast iron monument and updated ties.

April 27, 2010 - Found cast iron monument and updated ties.

June 18, 2015 - Found Sherburne County cast iron monument 2.5'± south of centerline and updated ties. Verified location of corner by VRS GPS methods.