

# CERTIFICATE OF LOCATION OF GOVERNMENT CORNER

County of Anoka

State of Minnesota

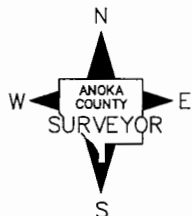
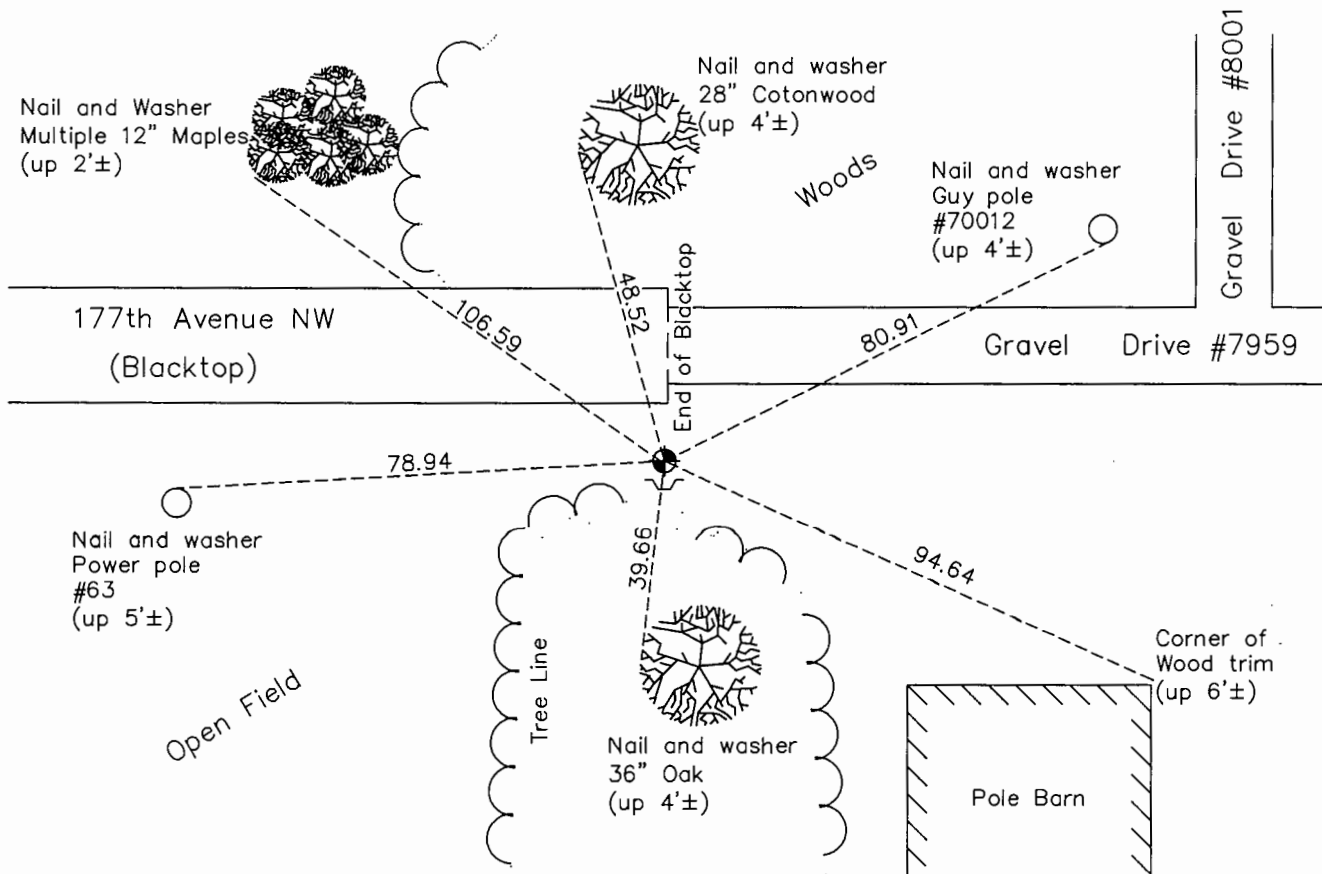
## East 1/4 Corner of Sec. 5 Township 32 Range 25

On the 13th day of May, 1969, the described corner was evidenced by area resurvey

and to perpetuate the location of said corner, at the exact location thereof, a permanent marker was placed consisting of a cast iron monument

AND on the 17th day of July, 2015, said permanent marker was found up 0.1'± and the ties were updated. A sign and post was found on the south side.

Updated reference ties are as shown below.



Revision Date  
8/18/16

N.A.D. 1983 Coordinates  
(1996 Adjustment)

County Project Coordinates	
Northing	193707.1089
Easting	447681.1638
Date	1/03/00

I hereby certify that this United States public land survey monument record is correct and complete to the best of my knowledge and belief.

*Larry D. Hoium* Date 8/29/16

Larry D. Hoium, Anoka County Surveyor

Minnesota License Number 18165

# HISTORY OF GOVERNMENT CORNER

County of Anoka

State of Minnesota

East 1/4 Corner of Sec. 5 Township 32 Range 25

**CORNER HISTORY:**

**May 13, 1969** - Set cast iron monument flush with the surface and 1.5'± north of a power pole using area resurvey and established ties to monument.

July 25, 1972 - Found cast iron monument and updated ties.

June 21, 1976 - Found cast iron monument and updated ties.

June 15, 1979 - Found cast iron monument and updated ties.

August 11, 1982 - Found cast iron monument and updated ties.

July 22, 1985 - Found cast iron monument and updated ties.

July 6, 1988 - Found cast iron monument and updated ties.

August 6, 1993 - Found cast iron monument and updated ties.

January 3, 2000 - Found cast iron monument and established NAD 1983 (1996 Adjustment) Anoka County Project Coordinates by Static GPS methods. Updated ties.

April 15, 2010 - Found cast iron monument with sign and post on the south side and updated ties.

July 17, 2015 - Found cast iron monument up 0.1'± with a sign and post on the south side and updated ties.