

CERTIFICATE OF LOCATION OF GOVERNMENT CORNER

County of Anoka

State of Minnesota

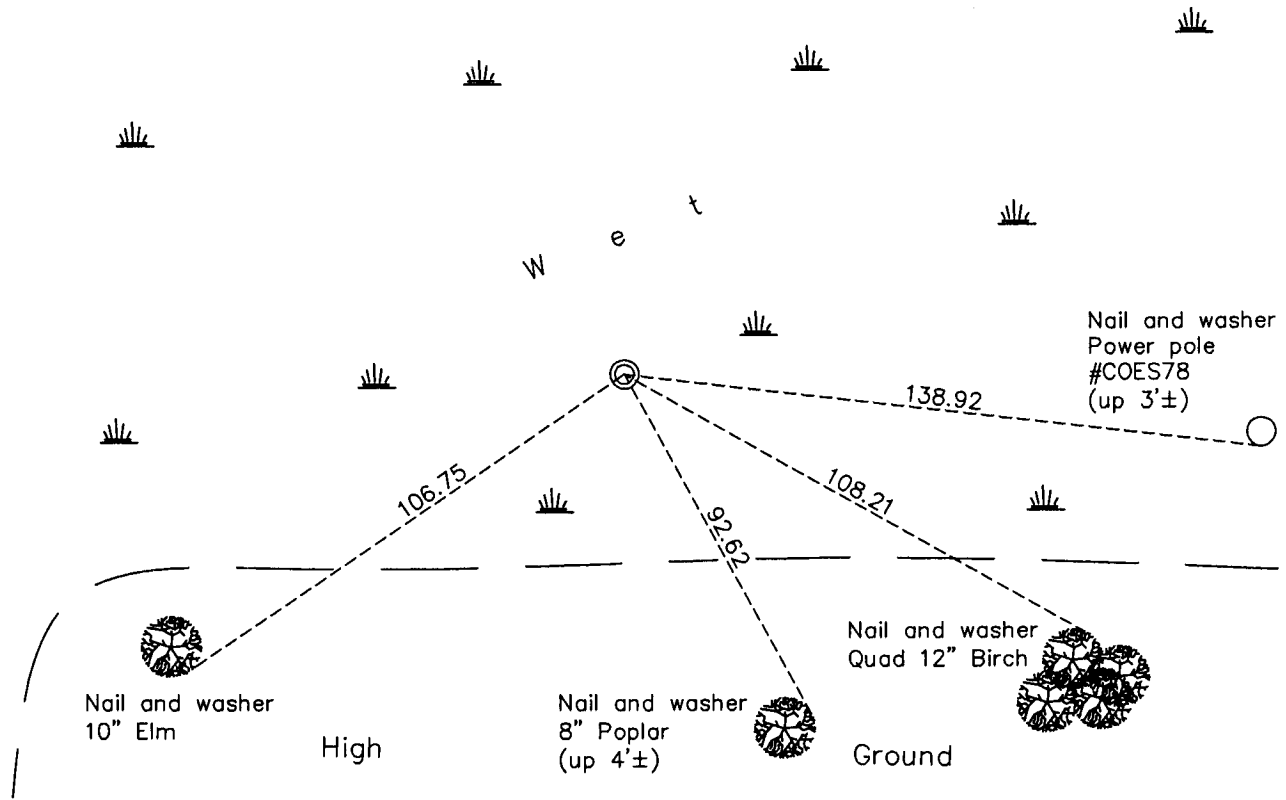
West 1/4 Corner of Sec. 3 Township 32 Range 25

On the 24th day of January, 1979, the described corner was evidenced by area resurvey

and to perpetuate the location of said corner, at the exact location thereof, a permanent marker was placed consisting of a red and white iron pipe

AND on the 25th day of May, 2010, said permanent marker was found up 5' and the ties were updated

Updated reference ties are as shown below.



N

 S

Revision Date
6/18/10

N.A.D. 1983 Coordinates
(1996 Adjustment)

County Project Coordinates	
Northing	193667.9586
Easting	452870.3700
Date	3/06/00

I hereby certify that this United States public land survey monument record is correct and complete to the best of my knowledge and belief.

Larry D. Hoium Date 6/18/10

Larry D. Hoium, Anoka County Surveyor
 Minnesota License Number 18165

HISTORY OF GOVERNMENT CORNER

County of Anoka

State of Minnesota

West 1/4 Corner of Sec. 3 Township 32 Range 25

CORNER HISTORY:

1969 - Replaced found iron pipe with a red and white iron pipe and verified location of corner using area resurvey. Established ties to iron pipe.

January 24, 1979 - Found red and white iron pipe and updated ties.

November 3, 1983 - Found red and white iron pipe and updated ties.

July 6, 1988 - Found red and white iron pipe and updated ties.

March 6, 2000 - Found red and white iron pipe and established NAD 1983 (1996 Adjustment) Anoka County Project Coordinates by Static GPS methods. Updated ties.

May 25, 2010 - Found red and white iron pipe up 5'± and updated ties.