

CERTIFICATE OF LOCATION OF GOVERNMENT CORNER

County of Anoka

State of Minnesota

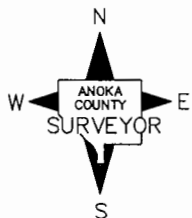
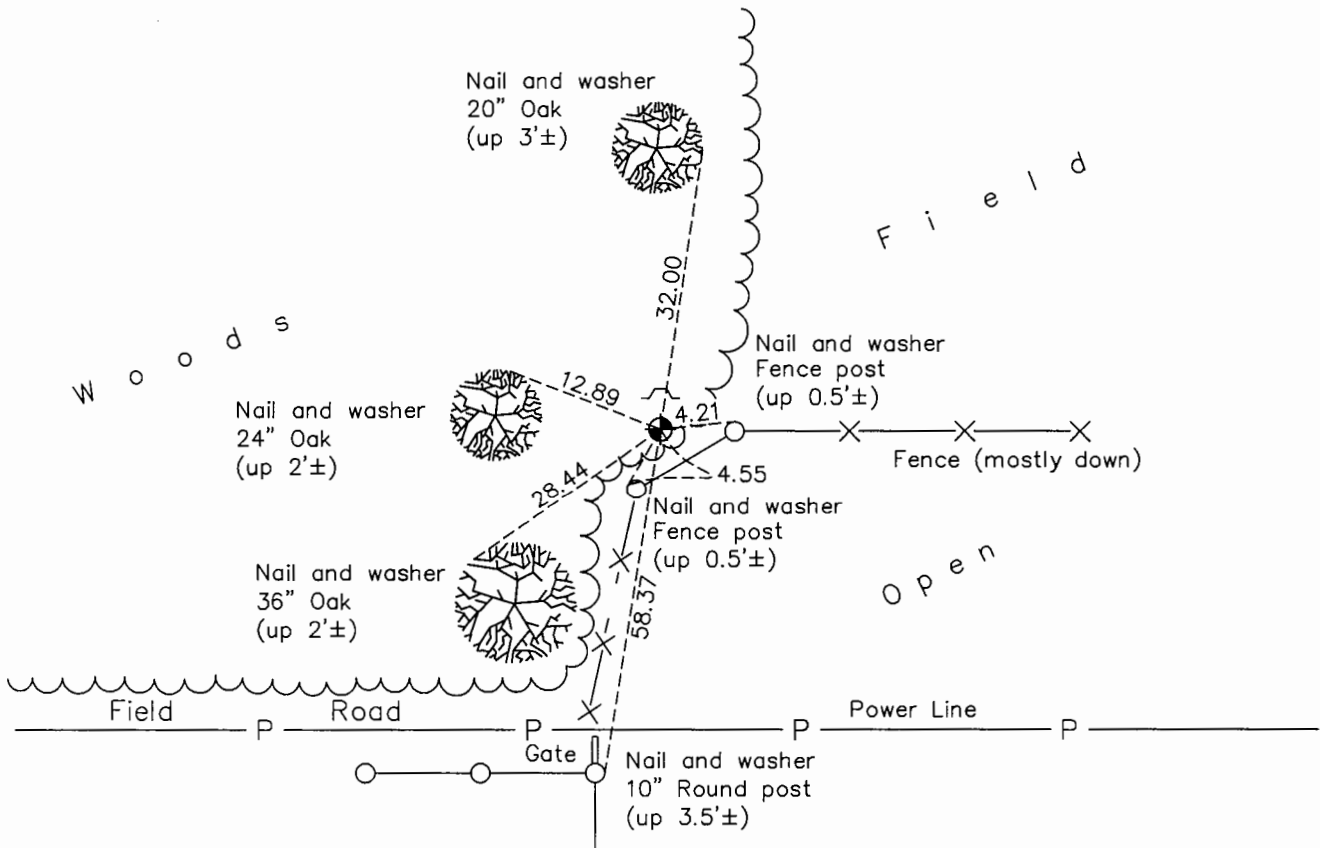
West 1/4 Corner of Sec. 1 Township 32 Range 25

On the 12th day of August, 1960, the described corner was evidenced by a well point

and to perpetuate the location of said corner, at the exact location thereof, a permanent marker was placed consisting of a cast iron monument with a sign and post on the north side

AND on the 18th day of September, 2015, said permanent marker was found flush and the ties were updated

Updated reference ties are as shown below.



Revision Date
7/18/16

N.A.D. 1983 Coordinates
(1996 Adjustment)

County Project Coordinates	
Northing	<u>193577.3614</u>
Easting	<u>463408.6988</u>
Date	<u>2/14/00</u>

I hereby certify that this United States public land survey monument record is correct and complete to the best of my knowledge and belief.

Larry D. Hoium Date 8/25/16

Larry D. Hoium, Anoka County Surveyor
Minnesota License Number 18165

HISTORY OF GOVERNMENT CORNER

County of Anoka

State of Minnesota

West 1/4 Corner of Sec. 1 Township 32 Range 25

CORNER HISTORY:

May 25, 1946 - Cartwright found a concrete monument and established ties to monument.

August 12, 1960 - Replaced well point with a cast iron monument set flush with the surface. Updated ties.

August 10, 1964 - Found cast iron monument and updated ties.

June 9, 1969 - Found cast iron monument and updated ties.

July 25, 1972 - Found cast iron monument and updated ties.

June 21, 1976 - Found cast iron monument and updated ties.

June 15, 1979 - Found cast iron monument and updated ties.

August 18, 1982 - Found cast iron monument and updated ties.

July 23, 1985 - Found cast iron monument and updated ties.

July 13, 1988 - Found cast iron monument and updated ties.

August 16, 1993 - Found cast iron monument and updated ties.

February 14, 2000 - Found cast iron monument with sign and post on north side and established NAD 1983 (1996 Adjustment) Anoka County Project Coordinates by Static GPS methods. Updated ties.

May 26, 2010 - Found cast iron monument flush with the surface with sign and post on north side and updated ties.

September 18, 2015 - Found cast iron monument flush with the surface with sign and post on north side and updated ties.