

CERTIFICATE OF LOCATION OF GOVERNMENT CORNER

County of Anoka

State of Minnesota

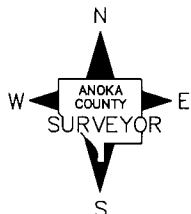
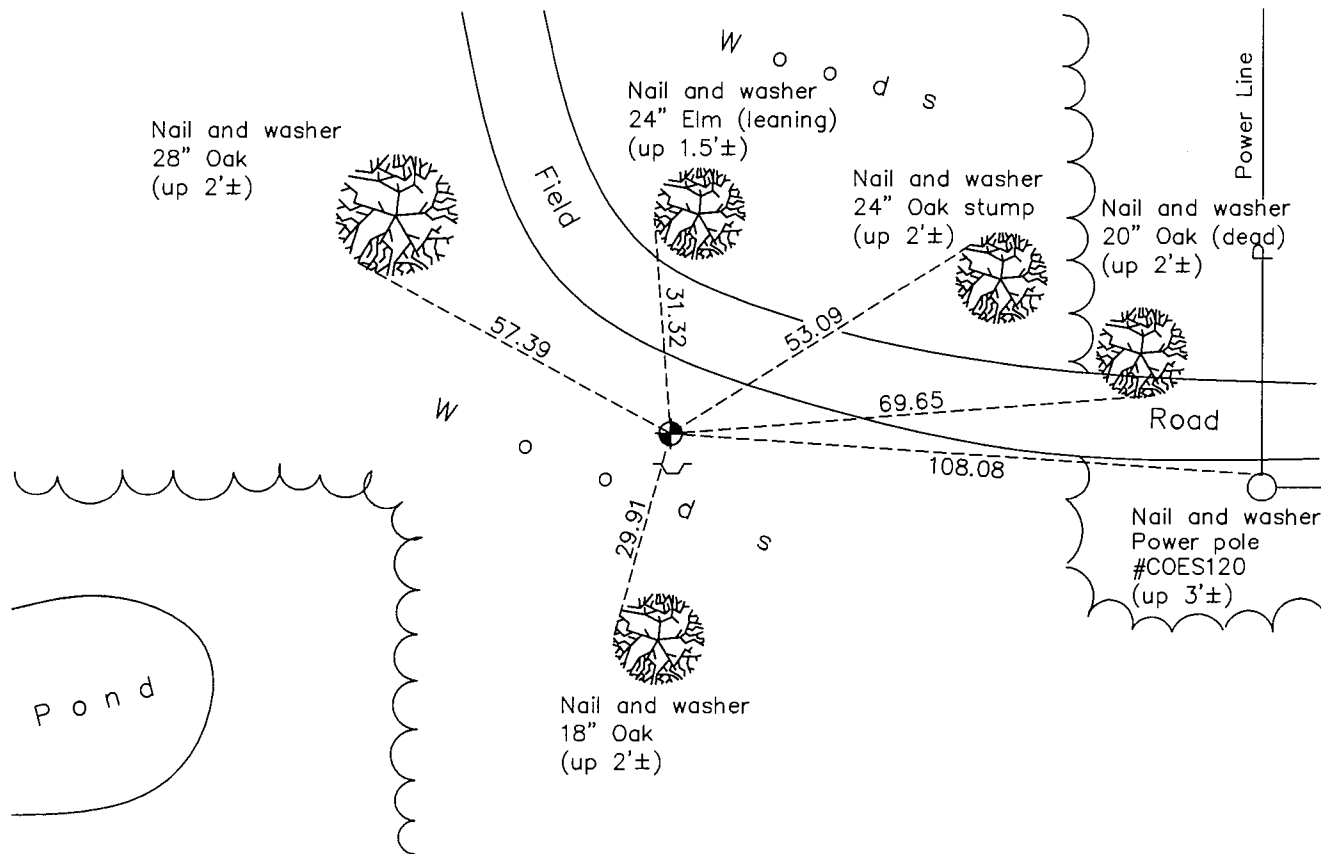
South $\frac{1}{4}$ Corner of Sec. 1 Township 32 Range 25

On the 9th day of February, 1966, the described corner was evidenced by area resurvey

and to perpetuate the location of said corner, at the exact location thereof, a permanent marker was placed consisting of a cast iron monument with a sign and post on the south side

AND on the 30th day of September, 2015, said permanent marker was found up 0.3' and the ties were updated

Updated reference ties are as shown below.



Revision Date
7/18/16

N.A.D. 1983 Coordinates
(1996 Adjustment)

County Project Coordinates	
Northing	<u>190927.5202</u>
Easting	<u>466012.7994</u>
Date	<u>2/15/00</u>

I hereby certify that this United States public land survey monument record is correct and complete to the best of my knowledge and belief.

Larry D. Hoium Date 8/16/16

Larry D. Hoium, Anoka County Surveyor

Minnesota License Number 18165

HISTORY OF GOVERNMENT CORNER

County of Anoka

State of Minnesota

South 1/4 Corner of Sec. 1 Township 32 Range 25

CORNER HISTORY:

February 9, 1966 - Set cast iron monument using area resurvey and established ties to monument.

June 10, 1969 - Found cast iron monument up 0.1'± and updated ties.

August 16, 1972 - Found cast iron monument and updated ties.

June 21, 1976 - Found cast iron monument and updated ties.

June 18, 1979 - Found cast iron monument and updated ties.

August 18, 1982 - Found cast iron monument and updated ties.

July 15, 1988 - Found cast iron monument and updated ties.

August 20, 1993 - Found cast iron monument and updated ties.

February 15, 2000 - Found cast iron monument with sign and post on the south side and established NAD 1983 (1996 Adjustment) Anoka County Project Coordinates by Static GPS methods. Updated ties.

May 20, 2010 - Found cast iron monument up 0.3'± with sign and post on the south side and updated ties.

September 30, 2015 - Found cast iron monument up 0.3'± with sign and post on the south side and updated ties.