

# CERTIFICATE OF LOCATION OF GOVERNMENT CORNER

County of Anoka

State of Minnesota

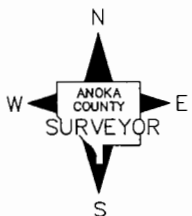
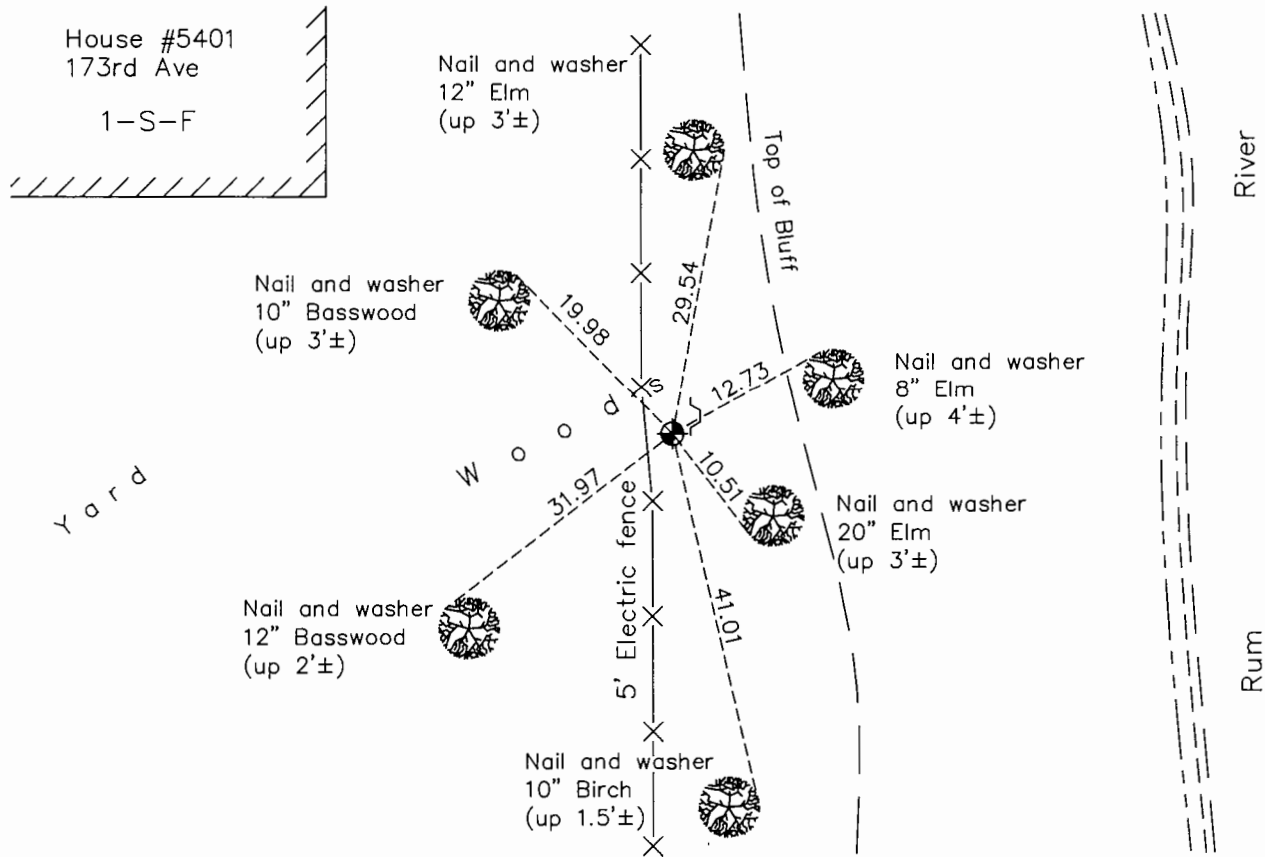
Witness Corner of Sec. 1 Township 32 Range 25  
 (On south line of section)

On the 21st day of June, 1969, the described corner was evidenced by area resurvey

and to perpetuate the location of said corner, at the exact location thereof, a permanent marker was placed consisting of a cast iron monument

AND on the 26th day of October, 2015, said permanent marker was found up 0.2'± with a sign and post on East side and the ties were updated

Updated reference ties are as shown below.



Revision Date  
8/19/16

N.A.D. 1983 Coordinates  
 (1996 Adjustment)

County Project Coordinates	
Northing	<u>190940.0033</u>
Easting	<u>464770.9926</u>
Date	<u>2/17/00</u>

I hereby certify that this United States public land survey monument record is correct and complete to the best of my knowledge and belief.

*Larry D. Hoium* Date 8/25/16

Larry D. Hoium, Anoka County Surveyor  
 Minnesota License Number 18165

# HISTORY OF GOVERNMENT CORNER

County of Anoka

State of Minnesota

Witness Corner of Sec. 1 Township 32 Range 25  
(On south line of section)

**CORNER HISTORY:**

**December 15, 1965** - Set cast iron monument using area resurvey and established ties to monument. Witness corner is 1375.10 feet east of the Southwest corner of Section 1.

June 10, 1969 - Found cast iron monument and updated ties.

August 21, 1972 - Found cast iron monument and updated ties.

June 22, 1976 - Found cast iron monument and updated ties.

June 18, 1979 - Found cast iron monument and updated ties.

August 20, 1982 - Found cast iron monument and updated ties.

November 4, 1983 - Found cast iron monument and updated ties.

July 23, 1985 - Found cast iron monument and updated ties.

June 14, 1988 - Found cast iron monument and updated ties.

August 24, 1993 - Found cast iron monument and updated ties.

February 17, 2000 - Found cast iron monument and established NAD 1983 (1996 Adjustment) Anoka County Project Coordinates by Static GPS methods.

May 20, 2010 - Found cast iron monument and updated ties.

October 26, 2015 - Found cast iron monument up 0.2'± with a sign and post on the east side and updated ties.