

# CERTIFICATE OF LOCATION OF GOVERNMENT CORNER

County of Anoka

State of Minnesota

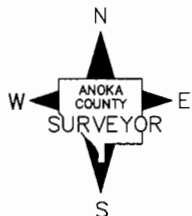
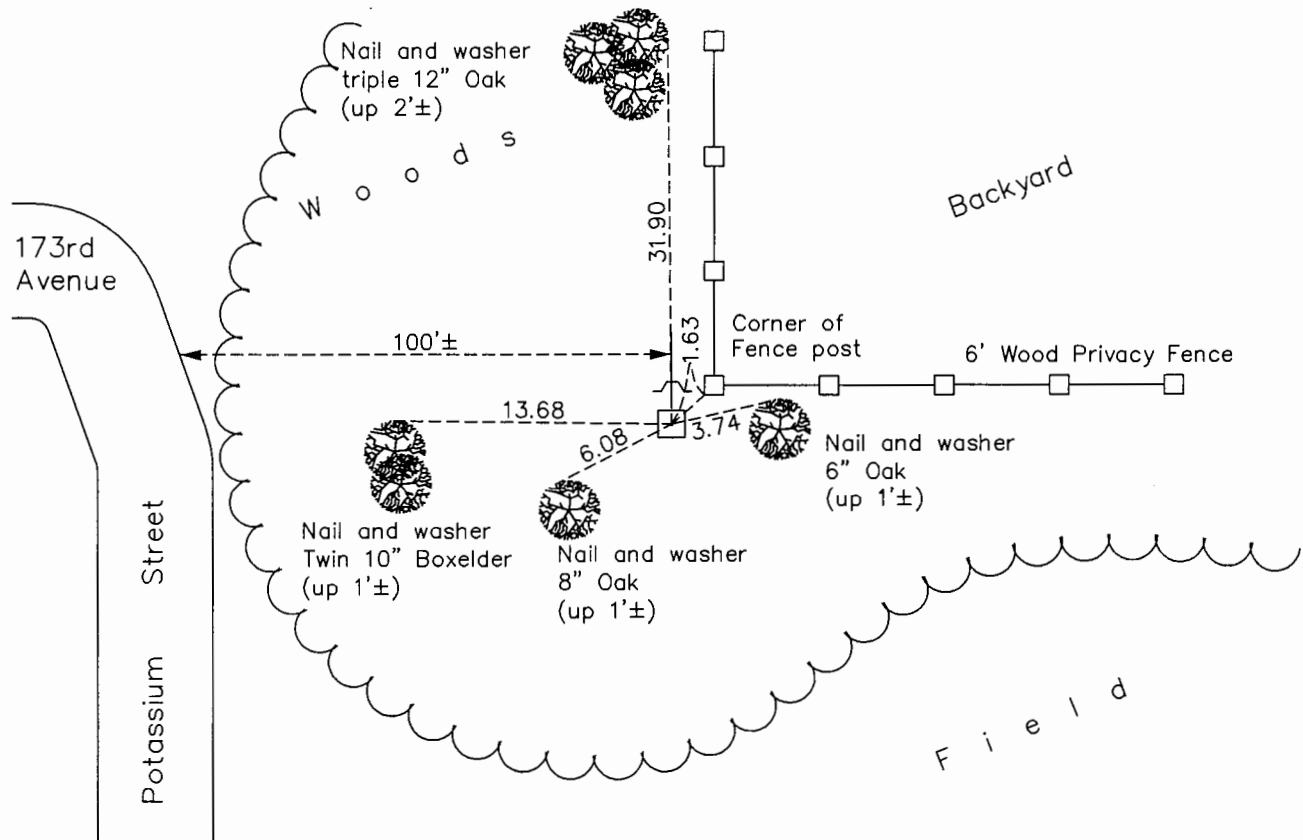
## South $\frac{1}{4}$ Corner of Sec. 2 Township 32 Range 25

On the 18th day of April, 1962, the described corner was evidenced by a concrete monument

and to perpetuate the location of said corner, at the exact location thereof, a permanent marker was placed consisting of the same concrete monument with a sign and post on the north side

AND on the 24th day of July, 2015, said permanent marker was found flush and the ties were updated

Updated reference ties are as shown below.



N.A.D. 1983 Coordinates  
(1996 Adjustment)

County Project Coordinates	
Northing	<u>190945.0553</u>
Easting	<u>460757.4839</u>
Date	<u>2/22/00</u>

Revision Date  
7/20/16

I hereby certify that this United States public land survey monument record is correct and complete to the best of my knowledge and belief.

*Larry D. Hoium* Date 8/16/16

Larry D. Hoium, Anoka County Surveyor  
Minnesota License Number 18165

# HISTORY OF GOVERNMENT CORNER

County of Anoka

State of Minnesota

South 1/4 Corner of Sec. 2 Township 32 Range 25

## **CORNER HISTORY:**

**August 8, 1945** - Cartwright found concrete monument and established ties to monument.

April 18, 1962 - Found 4" square concrete monument down 0.2'± with a 1.5" iron pipe up 0.2'± and 1.12' north of monument. Updated ties.

August 10, 1964 - Found concrete monument and updated ties.

June 9, 1969 - Found concrete monument and updated ties.

July 31, 1972 - Found concrete monument and updated ties.

June 22, 1976 - Found concrete monument and updated ties.

June 18, 1979 - Found concrete monument and updated ties.

August 18, 1983 - Found concrete monument and updated ties.

July 22, 1985 - Found concrete monument and updated ties.

June 14, 1988 - Found concrete monument and updated ties.

August 6, 1993 - Found concrete monument with a sign and post on the north side and updated ties.

February 22, 2000 - Found concrete monument and established NAD 1983 (1996 Adjustment) Anoka County Project Coordinates by Static GPS methods.

April 23, 2010 - Found concrete monument flush with the surface with a sign and post on the north side and updated ties.

July 24, 2015 - Found concrete monument flush with the surface with a sign and post on the north side and updated ties.