

CERTIFICATE OF LOCATION OF GOVERNMENT CORNER

County of Anoka

State of Minnesota

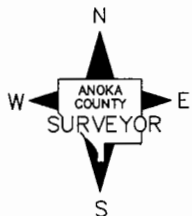
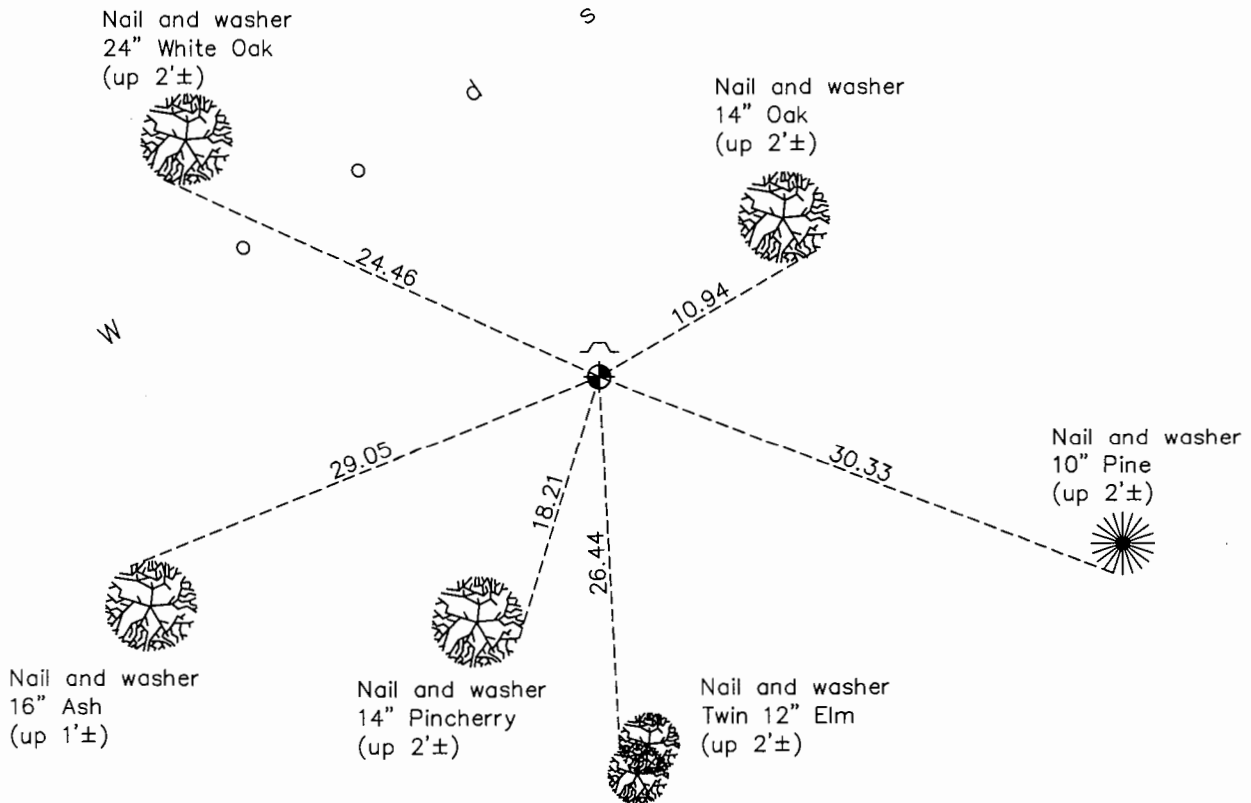
Northeast Corner of Sec. 10 Township 32 Range 25

On the 10th day of May, 1961, the described corner was evidenced by a 1 1/2" iron pipe

and to perpetuate the location of said corner, at the exact location thereof, a permanent marker was placed consisting of a cast iron monument with a sign and post on the north side

AND on the 24th day of July, 2015, said permanent marker was found up 0.2' and the ties were updated

Updated reference ties are as shown below.



Revision Date
7/20/16

N.A.D. 1983 Coordinates
(1996 Adjustment)

County Project Coordinates	
Northing	<u>190932.1240</u>
Easting	<u>458132.9867</u>
Date	<u>2/28/00</u>

I hereby certify that this United States public land survey monument record is correct and complete to the best of my knowledge and belief.

Larry D. Hoium Date 8/25/16

Larry D. Hoium, Anoka County Surveyor

Minnesota License Number 18165

HISTORY OF GOVERNMENT CORNER

County of Anoka

State of Minnesota

Northeast Corner of Sec. 10 Township 32 Range 25

CORNER HISTORY:

May 10, 1961 - Found 1.5" iron pipe on north-south fence line. Farmer living east of corner indicated it was the corner. He indicated that he has lived on his property since 1936 and that a survey was performed in 1939±. Established ties to iron pipe.

August 11, 1964 - Found 1.5" iron pipe up 0.5'± and updated ties.

June 18, 1969 - Replaced 1.5" iron pipe with cast iron monument set up 0.1'±. Updated ties.

August 23, 1972 - Found cast iron monument and updated ties.

June 22, 1976 - Found cast iron monument and updated ties.

July 3, 1979 - Found cast iron monument and updated ties.

August 18, 1983 - Found cast iron monument and updated ties.

July 12, 1988 - Found cast iron monument and updated ties.

August 13, 1993 - Found cast iron monument and updated ties.

February 28, 2000 - Found cast iron monument with sign and post on the north side and established NAD 1983 (1996 Adjustment) Anoka County Project Coordinates by Static GPS methods. Updated ties.

May 26, 2010 - Found cast iron monument up 0.2'± with a sign and post on the north side and updated ties.

July 24, 2015 - Found cast iron monument up 0.2'± with a sign and post on the north side and updated ties.