

CERTIFICATE OF LOCATION OF GOVERNMENT CORNER

County of Anoka

State of Minnesota

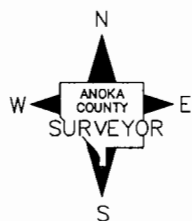
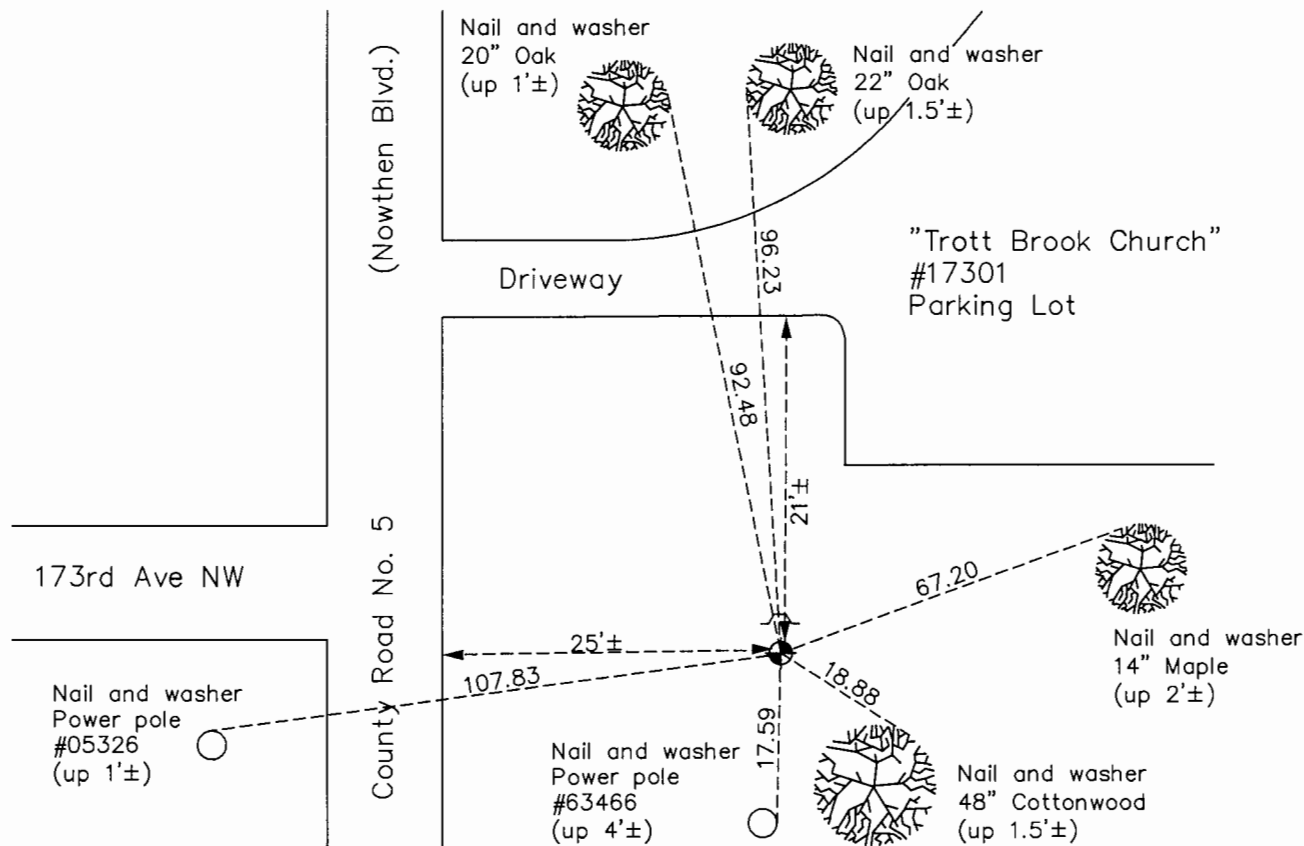
North 1/4 Corner of Sec. 10 Township 32 Range 25

On the 31st day of July, 1973, the described corner was evidenced by a spike

and to perpetuate the location of said corner, at the exact location thereof, a permanent marker was placed consisting of a cast iron monument with a sign and post on the north side

AND on the 14th day of July, 2015, said permanent marker was found down 0.7' and the ties were updated

Updated reference ties are as shown below.



Revision Date

7/20/16

N.A.D. 1983 Coordinates
(1996 Adjustment)

County Project Coordinates	
Northing	190929.3361
Easting	455428.6203
Date	1/04/00

I hereby certify that this United States public land survey monument, record is correct and complete to the best of my knowledge and belief.

Larry D. Hoium Date 8/29/16

Larry D. Hoium, Anoka County Surveyor

Minnesota License Number 18165

HISTORY OF GOVERNMENT CORNER

County of Anoka

State of Minnesota

North 1/4 Corner of Sec. 10 Township 32 Range 25

CORNER HISTORY:

May 8, 1961 - Found 3/4" iron pipe down 0.4'± using 1915 ties. Farmers in area indicated that iron pipe is the quarter corner. Established ties to monument.

August 5, 1964 - Found 3/4" iron pipe and updated ties.

June 9, 1969 - Replaced 3/4" iron pipe with a cast iron monument. Updated ties.

November 15, 1972 - Set spike in dirt stock pile and updated remaining ties during road construction.

July 31, 1973 - Set cast iron monument after road construction using construction ties. Set sign and post near monument.

June 18, 1979 - Found cast iron monument with sign and post and updated ties.

August 20, 1982 - Found cast iron monument with sign and post and updated ties.

November 8, 1983 - Found cast iron monument with sign and post and updated ties.

July 18, 1985 - Found cast iron monument with sign and post and updated ties.

June 16, 1988 - Found cast iron monument with sign and post and updated ties.

November 7, 1991 - Found cast iron monument with sign and post and updated ties.

January 4, 2000 - Found cast iron monument with sign and post on the north side and established NAD 1983 (1996 Adjustment) Anoka County Project Coordinates by Static GPS methods. Updated ties.

April 26, 2010 - Found cast iron monument down 0.7'± with sign and post on the north side and updated ties.

July 14, 2015 - Found cast iron monument with sign and post on the north side and updated ties. Verified location of corner by VRS GPS methods.