

CERTIFICATE OF LOCATION OF GOVERNMENT CORNER

County of Anoka

State of Minnesota

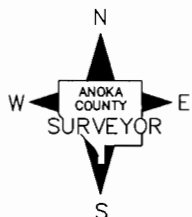
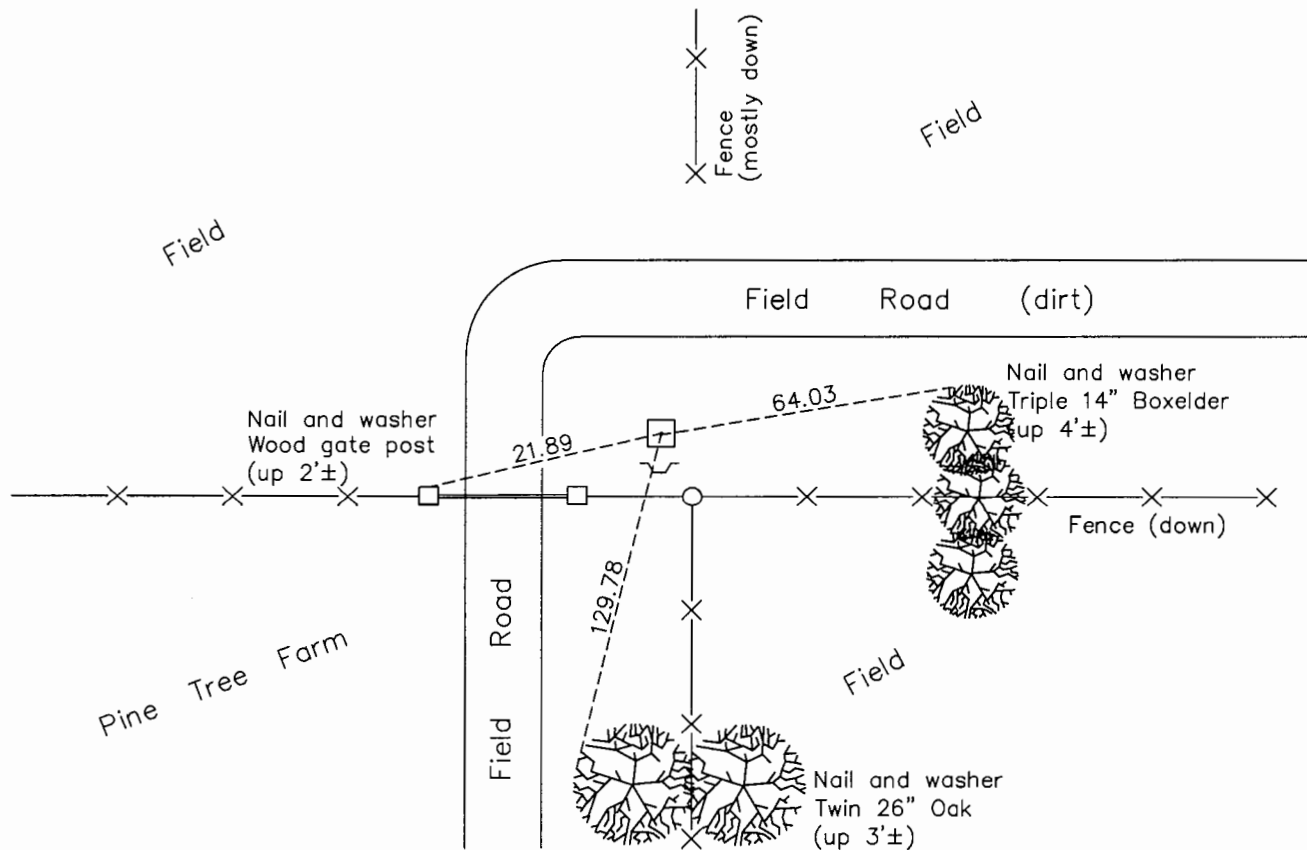
Southeast Corner of Sec. 4 Township 32 Range 25

On the 29th day of March, 1961, the described corner was evidenced by a granite monument

and to perpetuate the location of said corner, at the exact location thereof, a permanent marker was placed consisting of the same granite monument

AND on the 21st day of September, 2015, said permanent marker was found down 0.8'± and the ties were updated. A sign and post was found on the south side.

Updated reference ties are as shown below.



Revision Date
7/20/16

N.A.D. 1983 Coordinates
(1996 Adjustment)

County Project Coordinates	
Northing	190957.1138
Easting	452792.5536
Date	1/04/00

I hereby certify that this United States public land survey monument record is correct and complete to the best of my knowledge and belief.

Larry D. Hoium Date 8/16/16

Larry D. Hoium, Anoka County Surveyor

Minnesota License Number 18165

HISTORY OF GOVERNMENT CORNER

County of Anoka

State of Minnesota

Southeast Corner of Sec. 4 Township 32 Range 25

CORNER HISTORY:

March 29, 1961 - Found 6" x 6" x 2' granite monument leaning east. Straightened monument and set flush with the surface. Set 18" iron pipe on north edge of monument and established ties to monument.

August 3, 1964 - Found granite monument and updated ties.

June 11, 1969 - Found granite monument and updated ties.

July 3, 1972 - Found granite monument and updated ties.

June 22, 1976 - Found granite monument flush with the surface with an iron pipe on north side. Updated ties.

June 2, 1978 - Found granite monument flush with the surface with an iron pipe on north side. Updated ties prior to fence construction.

June 28, 1979 - Found granite monument and updated ties.

July 15, 1980 - Found granite monument and updated ties.

August 11, 1982 - Found granite monument and updated ties.

November 8, 1983 - Found granite monument and updated ties.

July 18, 1985 - Found granite monument and updated ties.

July 7, 1988 - Found granite monument and updated ties.

August 23, 1993 - Found granite monument and updated ties.

January 4, 2000 - Found granite monument and established NAD 1983 (1996 Adjustment) Anoka County Project Coordinates by Static GPS methods. Updated ties.

May 3, 2010 - Found granite monument down 0.8'± with a sign and post on the south side and updated ties.

September 21, 2015 - Found granite monument down 0.8'± with a sign and post on the south side and updated ties. Verified location of corner by VRS GPS methods.