

CERTIFICATE OF LOCATION OF GOVERNMENT CORNER

County of Anoka

State of Minnesota

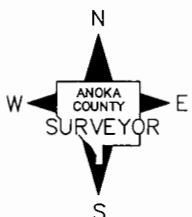
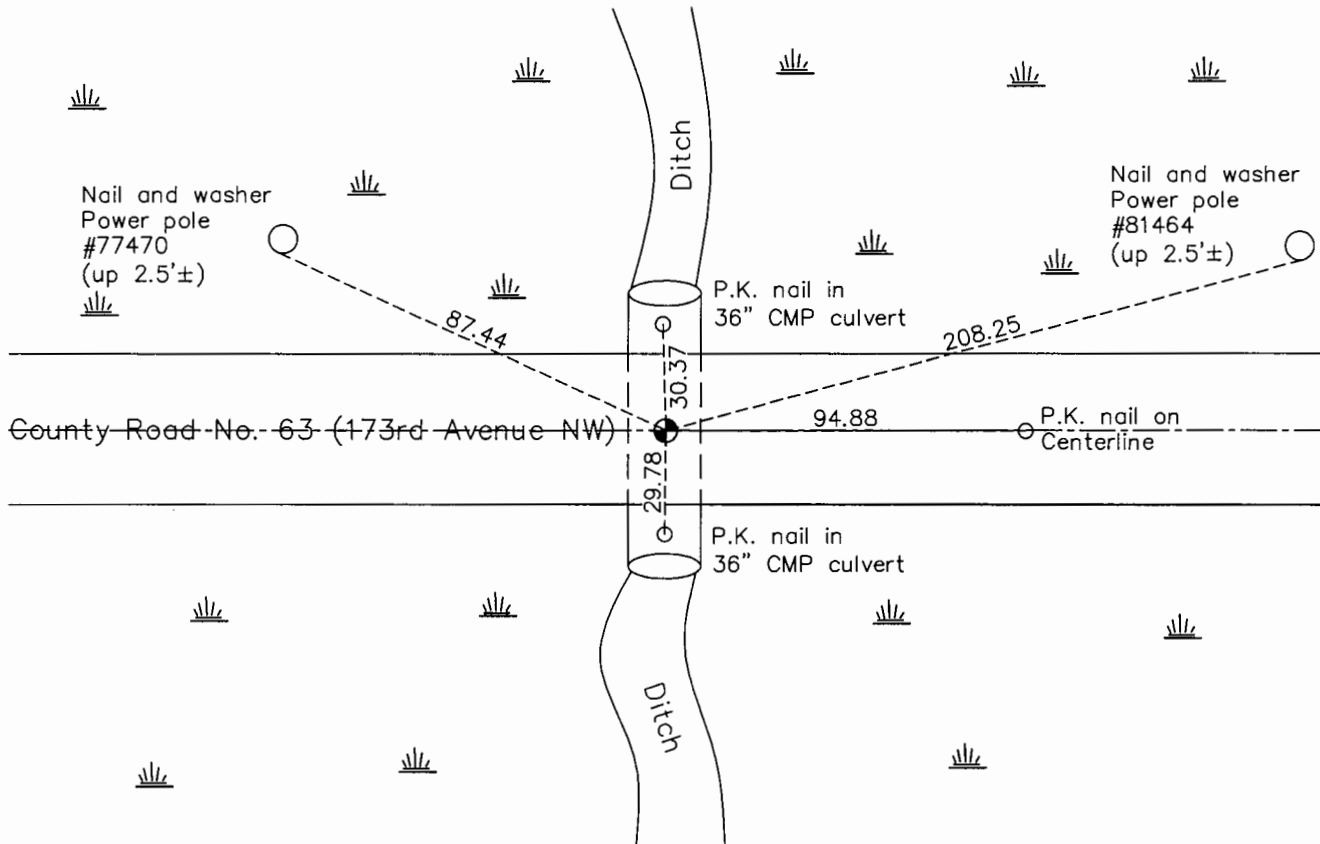
South $\frac{1}{4}$ Corner of Sec. 5 Township 32 Range 25

On the 15th day of July, 1977, the described corner was evidenced by area resurvey

and to perpetuate the location of said corner, at the exact location thereof, a permanent marker was placed consisting of a cast iron monument set flush with P.K. nails set 2.00' South and West

AND on the 14th day of July, 2015, said permanent marker was found flush and the ties were updated

Updated reference ties are as shown below.



Revision Date

7/22/16

N.A.D. 1983 Coordinates
(1996 Adjustment)

County Project Coordinates	
Northing	<u>191053.2576</u>
Easting	<u>445003.3650</u>
Date	<u>9/01/99</u>

I hereby certify that this United States public land survey monument record is correct and complete to the best of my knowledge and belief.

Larry D. Hoium Date 8/25/16

Larry D. Hoium, Anoka County Surveyor
Minnesota License Number 18165

HISTORY OF GOVERNMENT CORNER

County of Anoka

State of Minnesota

South 1/4 Corner of Sec. 5 Township 32 Range 25

CORNER HISTORY:

May 12, 1969 - Set cast iron monument flush with the surface using area resurvey and established ties to monument.

July 17, 1972 - Found cast iron monument and updated ties.

June 22, 1976 - Found cast iron monument and updated ties.

July 15, 1977 - Reset position of corner with cast iron monument set flush with the surface and on centerline of road after road construction. Verified position by distances to corners west and east.

June 18, 1979 - Found cast iron monument and updated ties.

August 20, 1982 - Found cast iron monument and updated ties.

May 26, 1992 - Replaced cast iron monument with a new cast iron monument set flush with the surface. Also set P.K. nails 2.00' west and south of monument and updated ties.

August 6, 1993 - Found cast iron monument and updated ties.

September 1, 1999 - Found cast iron monument and established NAD 1983 (1996 Adjustment) Anoka County Project Coordinates by Static GPS methods. Updated ties.

April 12, 2010 - Found cast iron monument flush with the surface and updated ties.

July 14, 2015 - Found cast iron monument flush with the surface and updated ties. Verified location of corner by VRS GPS methods.