

CERTIFICATE OF LOCATION OF GOVERNMENT CORNER

County of Anoka

State of Minnesota

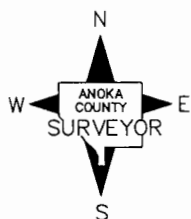
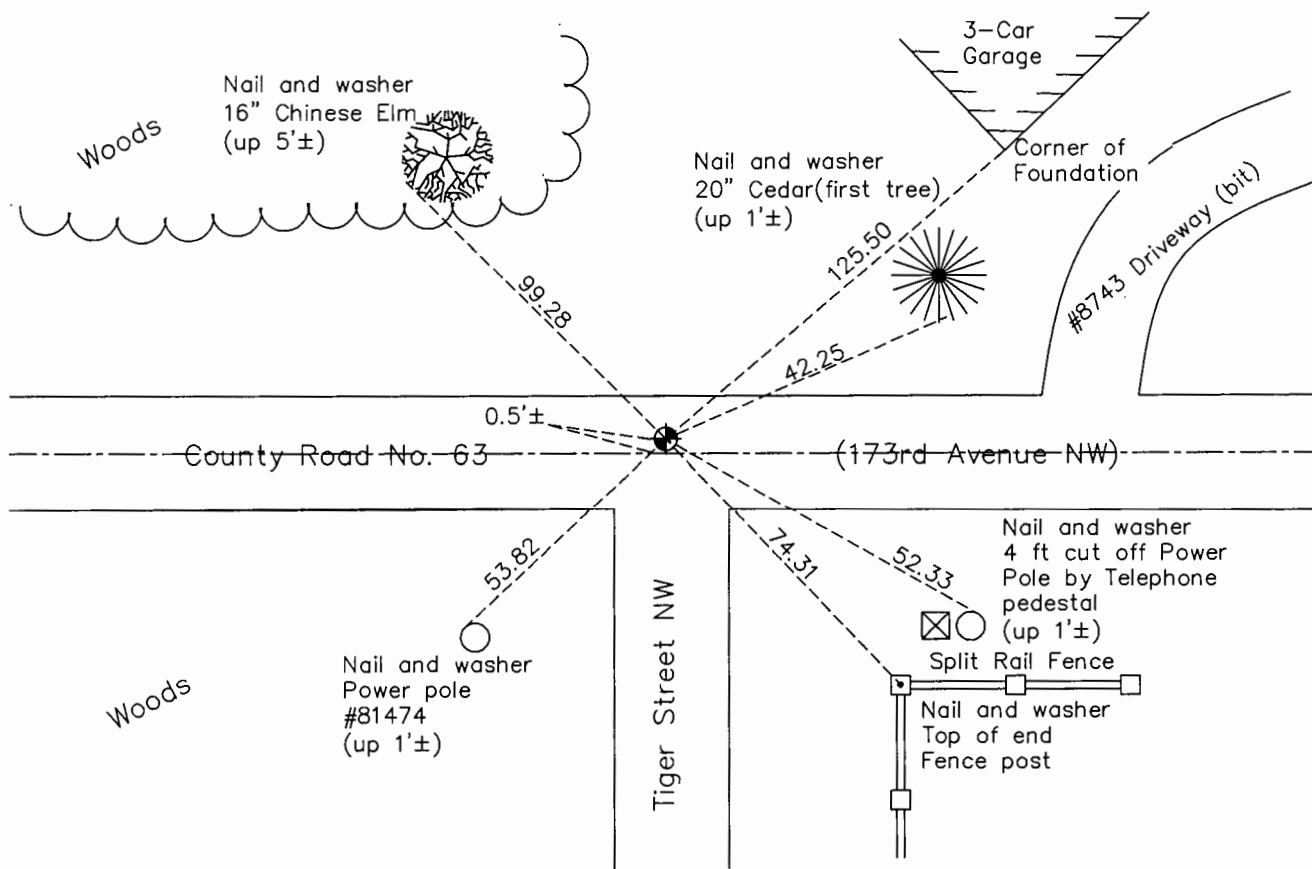
Southeast Corner of Sec. 6 Township 32 Range 25

On the 27th day of November, 1968, the described corner was evidenced by a P.K. nail

and to perpetuate the location of said corner, at the exact location thereof, a permanent marker was placed consisting of a cast iron monument

AND on the 14th day of July, 2015, said permanent marker was found flush and the ties were updated

Updated reference ties are as shown below.



Revision Date
7/21/16

N.A.D. 1983 Coordinates
(1996 Adjustment)

County Project Coordinates	
Northing	191051.5239
Easting	442378.1755
Date	9/01/99

I hereby certify that this United States public land survey monument record is correct and complete to the best of my knowledge and belief.

Larry D. Hoium Date 8/25/16

Larry D. Hoium, Anoka County Surveyor
Minnesota License Number 18165

HISTORY OF GOVERNMENT CORNER

County of Anoka

State of Minnesota

Southeast Corner of Sec. 6 Township 32 Range 25

CORNER HISTORY:

November 27, 1968 - Replaced P.K. nail set by E.C. Bather with a 1/2" iron pipe and updated ties.

June 11, 1969 - Replaced 1/2" iron pipe with a cast iron monument set flush with the surface and updated ties.

July 17, 1972 - Found cast iron monument and updated ties.

September 11, 1972 - Found cast iron monument and raised to flush with the surface. Updated ties.

June 18, 1979 - Found cast iron monument and updated ties.

August 20, 1982 - Found cast iron monument and updated ties.

June 6, 1988 - Found cast iron monument and updated ties.

August 6, 1993 - Found cast iron monument and updated ties.

September 1, 1999 - Found cast iron monument and established NAD 1983 (1996 Adjustment) Anoka County Project Coordinates by Static GPS methods. Updated ties.

April 13, 2010 - Found cast iron monument flush with the surface and updated ties.

July 14, 2015 - Found cast iron monument flush with the surface and 0.5'± north of centerline. Verified location of corner by VRS GPS methods and updated ties.